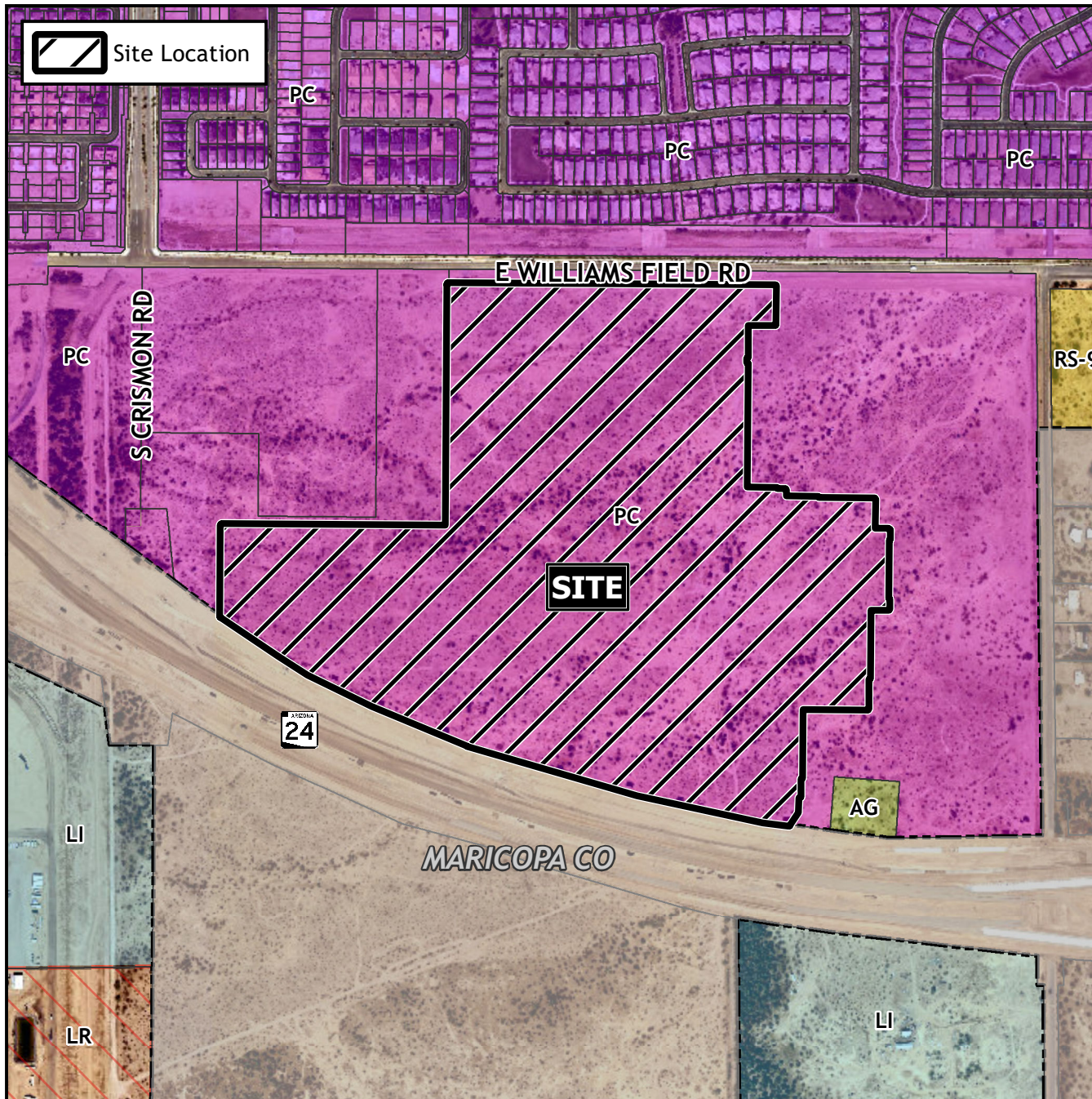


## Final Plat Vicinity Map



## Case Details

### Project:

Avalon Crossing Phase 1

SUB21-00969

### Site/Address:

District 6. Within the 10000 to 10500 blocks of East Williams Field Road (south side). Located east of Crismon Road on the south side of Williams Field Road (90.2± acres).

### Description:

Shea Homes Limited Partnership, Developers; Richard G. Alcocer, Coe and Van Loo, LLC, Surveyor.

