

P1

TILT-UP CONCRETE WALL PANEL  
WALL PANEL FIELD COLOR  
SHERWIN WILLIAMS - #7626 - ZURICH WHITE

P2

TILT-UP CONCRETE WALL PANEL  
WALL PANEL FIELD COLOR  
SHERWIN WILLIAMS - #7065 - ARGOS

P3

TILT-UP CONCRETE WALL PANEL  
WALL PANEL ACCENT COLOR  
SHERWIN WILLIAMS - #7075 - WEB GRAY

P4

TILT-UP CONCRETE WALL PANEL  
WALL PANEL ACCENT COLOR  
CAPROCK RED

P5

TILT-UP CONCRETE WALL PANEL  
WALL PANEL ACCENT COLOR  
WHITE

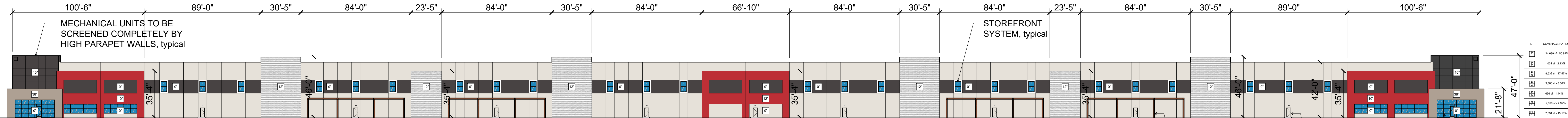
G1

1" INSULATED DUAL PANE MEDIUM PERFORMANCE  
PPG VISTACOL PACIFICA GLAZING  
CLEAR ANODIZED ALUMINUM MULLIONS

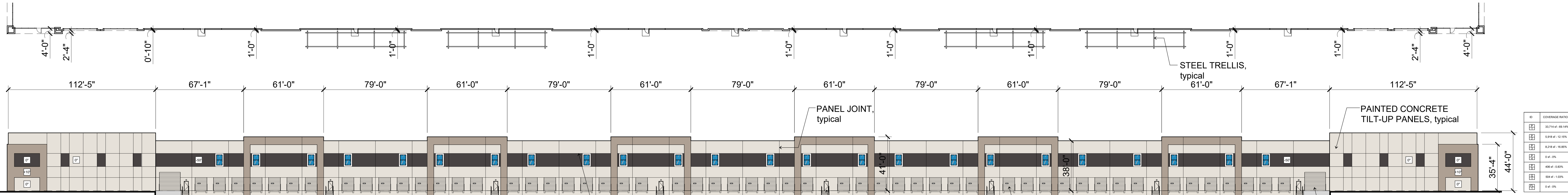
FL1

FORM LINER

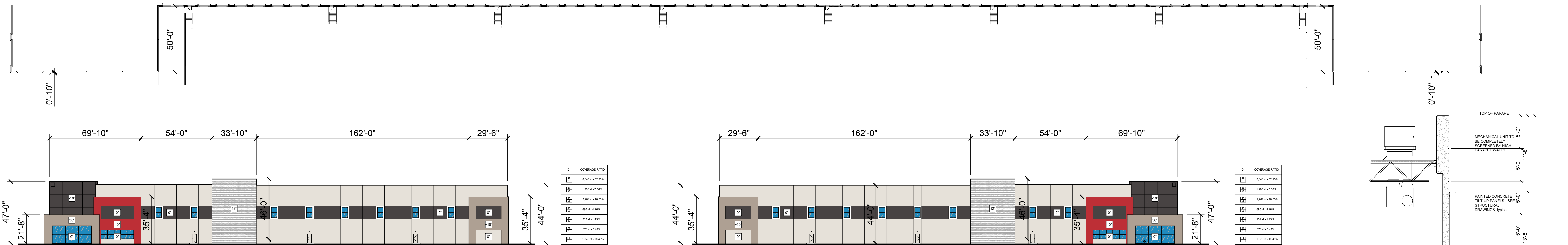
LEGEND



1. NORTH ELEVATION

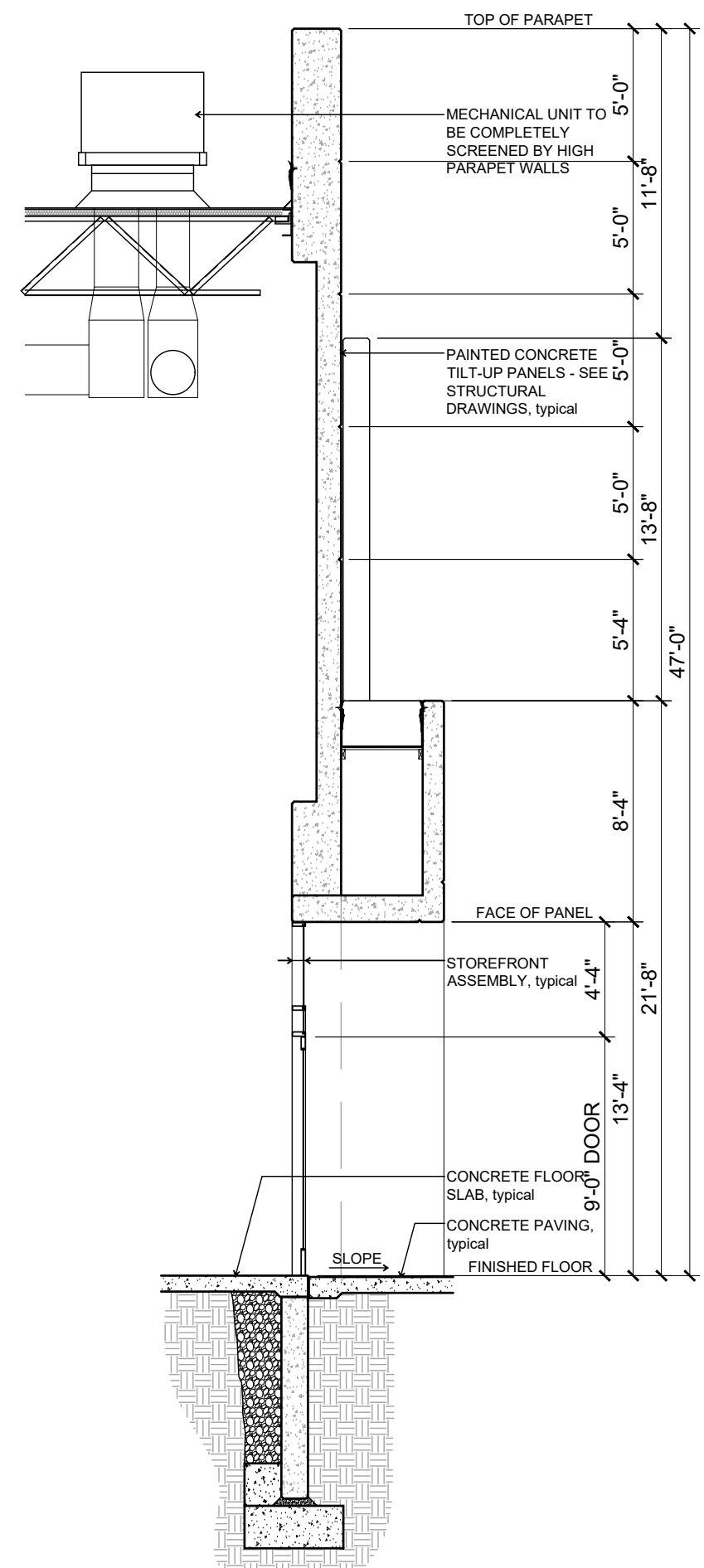


2. SOUTH ELEVATION



3. WEST ELEVATION

4. EAST ELEVATION

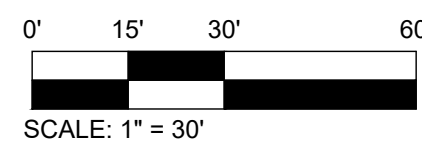


SECTION

# Building A Exterior Elevations

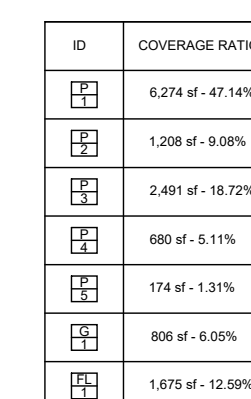
14 April 2022

Pecos and Merrill  
Phoenix, Arizona

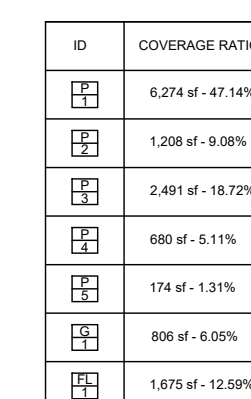




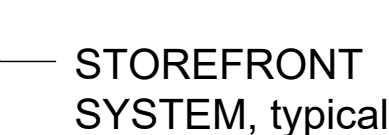
## LEGEND



### 3. EAST ELEVATION




#### 4. WEST ELEVATION



## 14 April 2022

0' 15' 30'



SCALE: 1" = 30'

