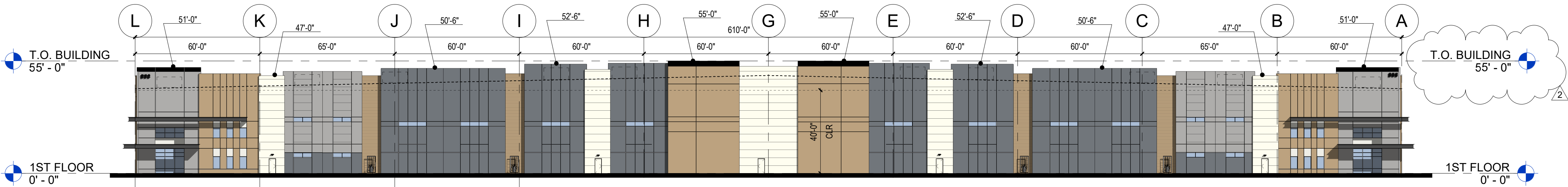


EXTERIOR MATERIAL LEGEND

A	DUNN EDWARDS PAINT DET648 WHITE PICKET FENCE	F	TEXTURED CONCRETE : FLUTED RIB 1/2" DEEP, 6" OC DUNN EDWARDS PAINT DET668 WITH THE GRAIN
B	DUNN EDWARDS PAINT DET610 WOLVERINE	G	STOREFRONT SYSTEM: 1" INSULATED GLAZING, PPG AZURIA/SOLARBAN 70, IN CLEAR ANNOIDIZED ALUMINUM FRAME
C	DUNN EDWARDS PAINT DET616 EQUINOX	J	TEXTURED CONCRETE: FLUTED RIB 1/2" DEEP, 12" OC DUNN EDWARDS PAINT DET610 WOLVERINE
D	DUNN EDWARDS PAINT DEA187 BLACK	K	TEXTURED CONCRETE: FLUTED RIB 1/2" DEEP, 12" OC DUNN EDWARDS PAINT DET648 WHITE PICKET FENCE
E	DUNN EDWARDS PAINT DET668 WITH THE GRAIN		

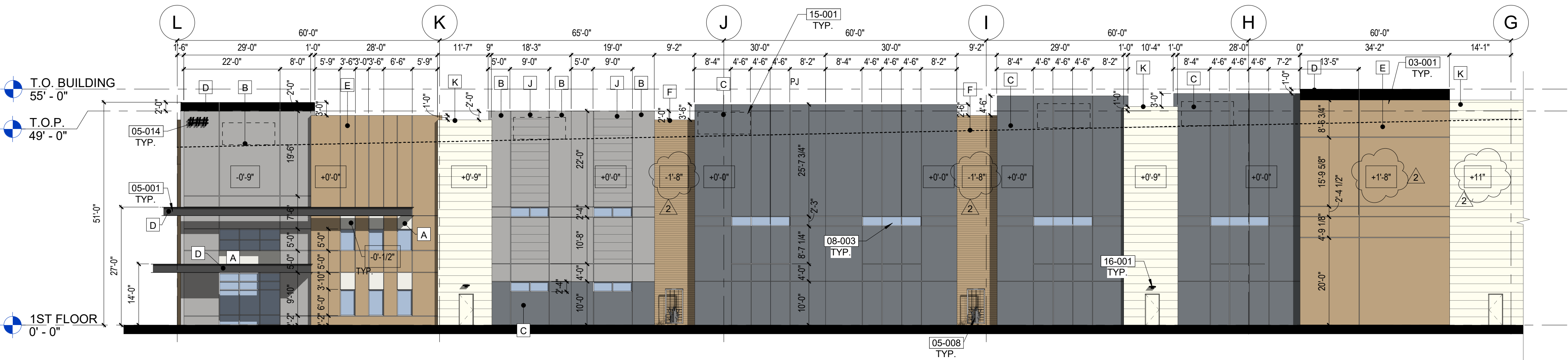
KEYNOTES

03-001	CONCRETE TILT PANEL WALL WITH HORIZONTAL AND/OR VERTICAL REVEALS - PAINTED
05-001	STEEL CANOPY-PAINTED
05-008	STEEL TRELLIS WITH CLIMBING VINES
05-014	PROPOSED BUILDING ADDRESS LOCATION. NUMBERS SHALL BE A MINIMUM OF 12" HIGH WITH A 2" STROKE ON CONTRASTING BACKGROUND. REFERENCE FPD 505.1, MCF 505.1
08-003	ALUMINUM FRAMED WINDOW
15-001	FUTURE MECHANICAL UNIT LOCATION ON ROOF FULLY SCREENED BY PARAPET
16-001	WALL-MOUNTED LIGHT FIXTURE - SEE ELECTRICAL

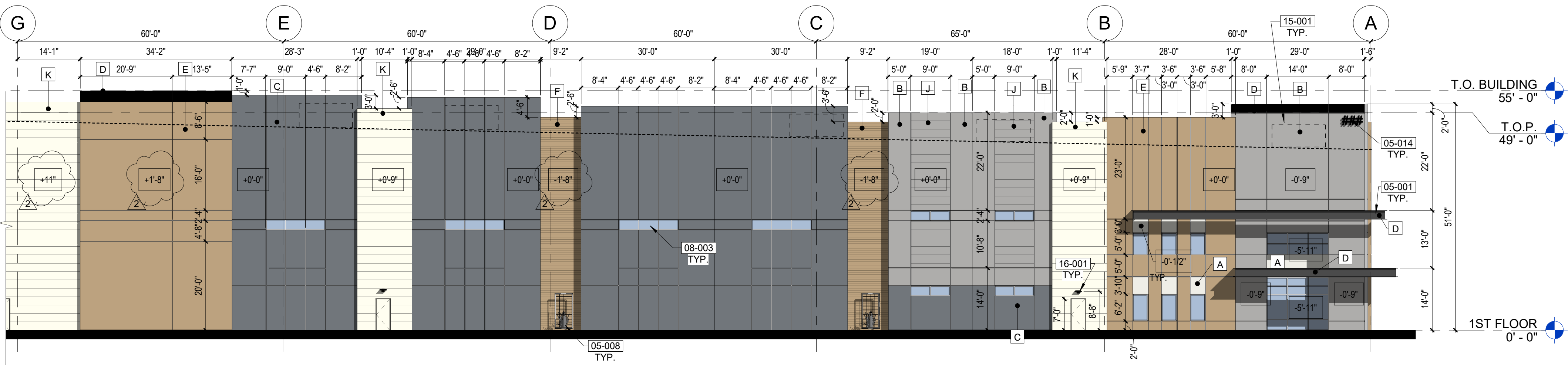


1 EAST ELEVATION - OVERALL

SCALE 1/32" = 1'-0"



EAST ELEVATION		
MATERIAL	AREA (SF)	%
CONCRETE TILT WALL		
COLOR A	291	1%
COLOR B	3,577	12%
COLOR C	12,184	40%
COLOR E	5,650	19%
CONCRETE TILT WALL W/ FORMLINER		
COLOR F	1,742	6%
COLOR J	1,285	4%
COLOR K	3,721	12%
WINDOWS (H)	1,153	4%
CANOPY/SHADE ELEMENT (D)	732	2%
OH DOOR	-	0%
HM DOOR (A)	122	0.4%
	30,457	100%



2 EAST ELEVATION

SCALE 1/16" = 1'-0"

CONCEPTUAL AND SCHEMATIC DESIGNS, INCLUDING RENDERINGS, ARE CREATED FOR THE SOLE PURPOSE OF DEVELOPING A DESIGN CONCEPT. THEY ARE PART OF THE OVERALL DESIGN PROCESS THAT ULTIMATELY LEADS TO MORE DETAILED DRAWINGS, BUT THE INFORMATION DEPICTED IN THESE DESIGNS IS INCOMPLETE AND NOT INTENDED TO REPRESENT THE FULL SCOPE OF THE PROJECT DESIGN. THE USE OF THESE CONCEPTUAL AND SCHEMATIC DESIGNS/RENDERINGS FOR ANY PURPOSE OTHER THAN AS INTENDED BY THE ARCHITECT IS PROHIBITED.

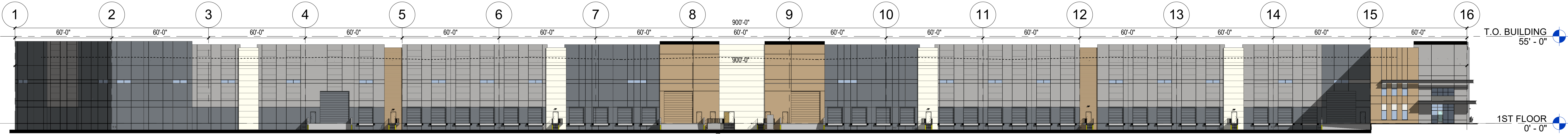
SOUTH ELEVATION		
MATERIAL	AREA (SF)	%
CONCRETE TILT WALL		
COLOR A	143	0.3%
COLOR B	9686.5	20%
COLOR C	14936.1	31%
COLOR E	4446.4	9%
CONCRETE TILT WALL W/ FORMLINER		
COLOR F	1074.2	2%
COLOR J	8025.7	17%
COLOR K	3931.9	8%
WINDOWS (H)	754	2%
CANOPY/SHADE ELEMENT (D)		
OH DOOR (E)	720	2%
OH DOOR (C)	3245.4	7%
HM DOOR (A)	71.7	0%
HM DOOR (E)	95.5	0.2%
	47527.9	100%

EXTERIOR MATERIAL LEGEND

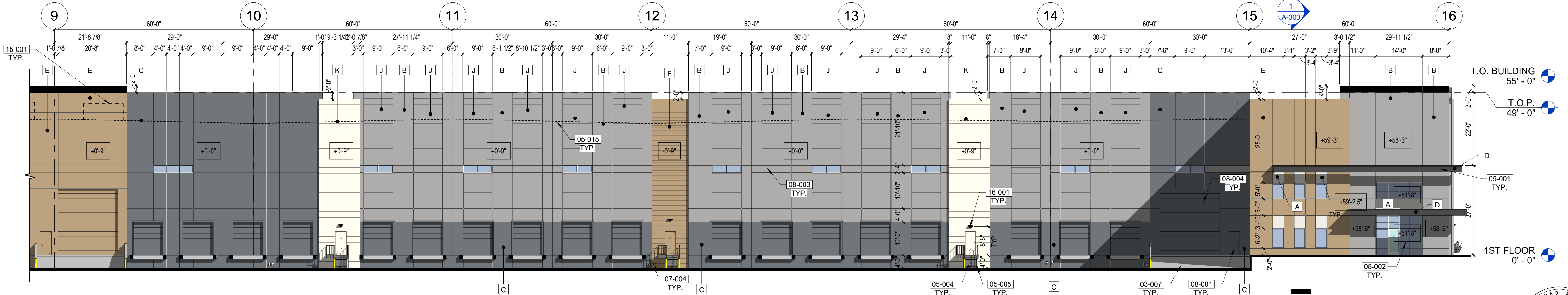
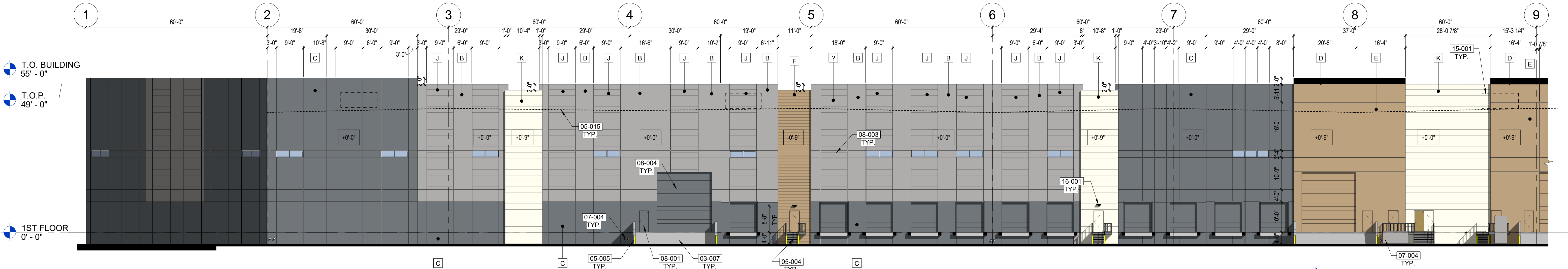
A	DUNN EDWARDS PAINT DET648 WHITE PICKET FENCE	F	TEXTURED CONCRETE : FLUTED RIB 1/2" DEEP, 6" OC DUNN EDWARDS PAINT DET668 WITH THE GRAIN
B	DUNN EDWARDS PAINT DET610 WOLVERINE	G	STOREFRONT SYSTEM: 1" INSULATED GLAZING, PPG AZURIA/SOLARBAN 70, IN CLEAR ANNOIDIZED ALUMINUM FRAME
C	DUNN EDWARDS PAINT DET616 EQUINOX	J	TEXTURED CONCRETE: FLUTED RIB 1/2" DEEP, 12" OC DUNN EDWARDS PAINT DET610 WOLVERINE
D	DUNN EDWARDS PAINT DEA167 BLACK	K	TEXTURED CONCRETE: FLUTED RIB 1/2" DEEP, 12" OC DUNN EDWARDS PAINT DET648 WHITE PICKET FENCE
E	DUNN EDWARDS PAINT DET668 WITH THE GRAIN		

KEYNOTES

03-007	CONCRETE RAMP UP
05-001	STEEL CANOPY-PAINTED
05-004	EXTERIOR STEEL STAIRS
05-005	6" PIPE BOLLARD - PAINTED SAFETY YELLOW
05-015	DASHED LINE INDICATES ROOF LINE
07-004	ROOF DRAIN DAYLIGHT LOCATION
08-001	HOLLOW METAL DOOR AND FRAME - PAINTED
08-002	ALUMINUM STOREFRONT SYSTEM
08-003	ALUMINUM FRAMED WINDOW
08-004	DOCK SECTIONAL DOOR
15-001	FUTURE MECHANICAL UNIT LOCATION ON ROOF FULLY SCREENED BY PARAPET
16-001	WALL-MOUNTED LIGHT FIXTURE - SEE ELECTRICAL

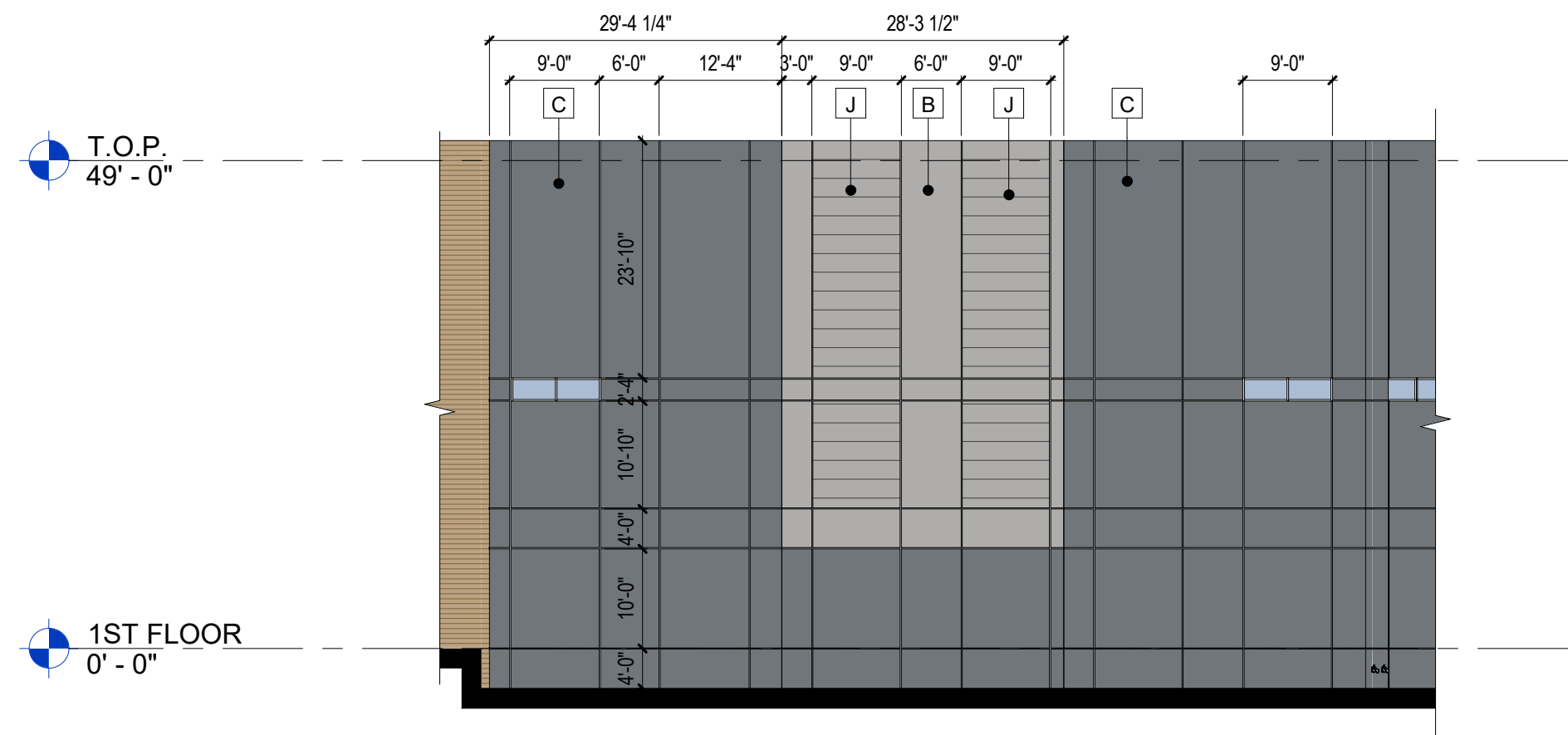


1 SOUTH ELEVATION - OVERALL
SCALE 1/32" = 1'-0"



2 SOUTH ELEVATION
SCALE 1/16" = 1'-0"

CONCEPTUAL AND SCHEMATIC DESIGNS, INCLUDING RENDERINGS, ARE CREATED FOR THE SOLE PURPOSE OF DEVELOPING A DESIGN CONCEPT. THEY ARE PART OF THE OVERALL DESIGN PROCESS THAT ULTIMATELY LEADS TO MORE DETAILED DRAWINGS, BUT THE INFORMATION DEPICTED IN THESE DESIGNS IS INCOMPLETE AND NOT INTENDED TO REPRESENT THE FULL SCOPE OF THE PROJECT DESIGN. THE USE OF THESE CONCEPTUAL AND SCHEMATIC DESIGNS/RENDERINGS FOR ANY PURPOSE OTHER THAN AS INTENDED BY THE ARCHITECT IS PROHIBITED.



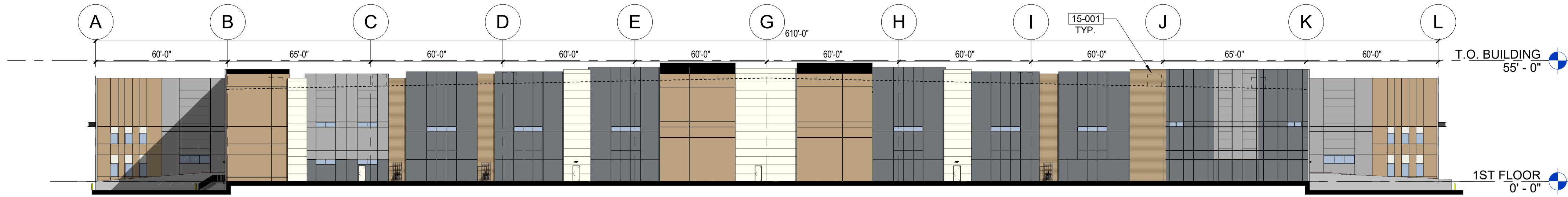
1 SOUTH-WEST EDGE ELEVATION
SCALE 1/16" = 1'-0"

WEST ELEVATION		
MATERIAL	AREA (SF)	%
CONCRETE TILT WALL		
COLOR A	0	0%
COLOR B	1110.2	5%
COLOR C	11092.36	47%
COLOR E	4705.1	20%
CONCRETE TILT WALL W/ FORMLINER		
COLOR F	2021.4	9%
COLOR J	1146.3	5%
COLOR K	3026.5	13%
WINDOWS (H)	324	1%
CANOPY/SHADE ELEMENT (D)	0	0%
OH DOOR	0	0%
HM DOOR (C)	96.7	0%
	23522.56	100%

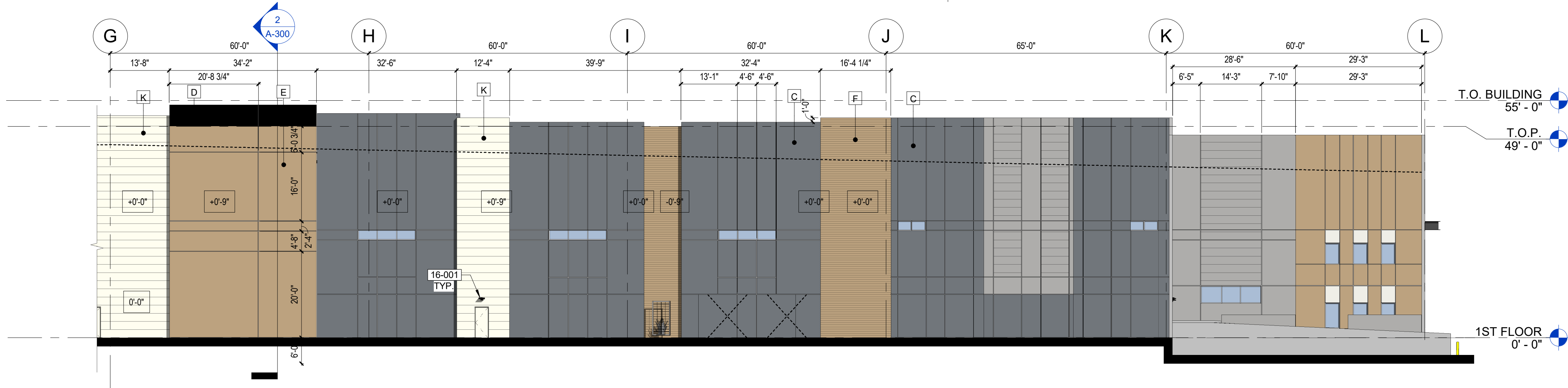
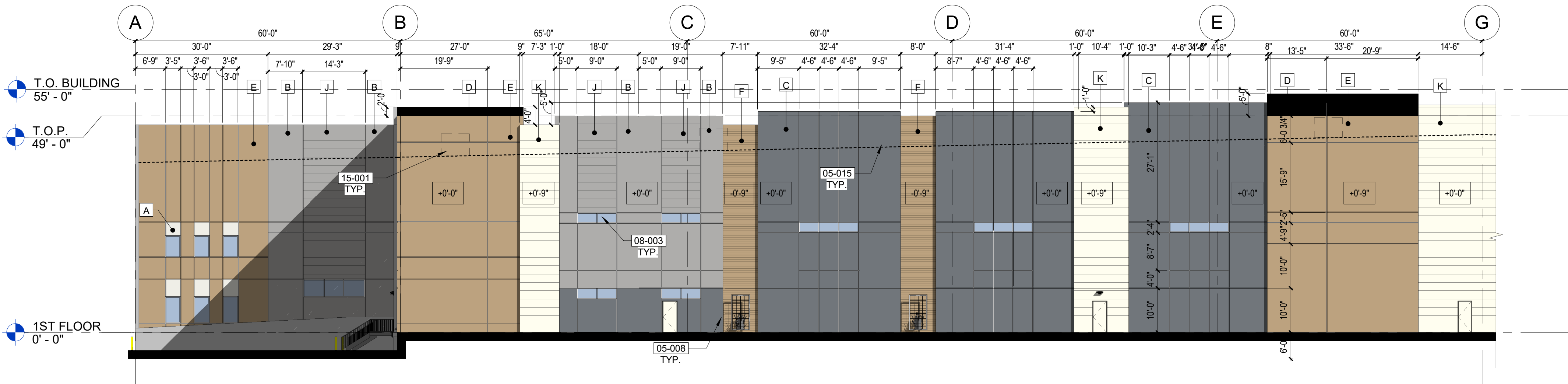
EXTERIOR MATERIAL LEGEND			
A	DUNN EDWARDS PAINT DET648 WHITE PICKET FENCE	F	TEXTURED CONCRETE : FLUTED RIB 1/2" DEEP, 6" OC DUNN EDWARDS PAINT DET668 WITH THE GRAIN
B	DUNN EDWARDS PAINT DET610 WOLVERINE	G	STOREFRONT SYSTEM: 1" INSULATED GLAZING, PPG AZURIA/SOLARBAN 70, IN CLEAR ANNOIDIZED ALUMINUM FRAME
C	DUNN EDWARDS PAINT DET616 EQUINOX	J	TEXTURED CONCRETE: FLUTED RIB 1/2" DEEP, 12" OC DUNN EDWARDS PAINT DET610 WOLVERINE
D	DUNN EDWARDS PAINT DEA187 BLACK	K	TEXTURED CONCRETE: FLUTED RIB 1/2" DEEP, 12" OC DUNN EDWARDS PAINT DET648 WHITE PICKET FENCE
E	DUNN EDWARDS PAINT DET668 WITH THE GRAIN		

KEYNOTES	
05-008	STEEL TRELLIS WITH CLIMBING VINES
05-015	DASHED LINE INDICATES ROOF LINE
08-003	ALUMINUM FRAMED WINDOW
15-001	FUTURE MECHANICAL UNIT LOCATION ON ROOF FULLY SCREENED BY PARAPET
16-001	WALL-MOUNTED LIGHT FIXTURE - SEE ELECTRICAL

GENERAL NOTES	
1.	ALL ROOF AND OVERFLOW DRAINS SHALL BE INTERNAL TO THE BUILDING.
2.	ALL FUTURE ROOF-TOP MECHANICAL EQUIPMENT SHALL BE FULLY SCREENED BY THE PARAPET.



2 WEST ELEVATION - OVERALL
SCALE 1/32" = 1'-0"



3 WEST ELEVATION
SCALE 1/16" = 1'-0"

CONCEPTUAL AND SCHEMATIC DESIGNS, INCLUDING RENDERINGS, ARE CREATED FOR THE SOLE PURPOSE OF DEVELOPING A DESIGN CONCEPT. THEY ARE PART OF THE OVERALL DESIGN PROCESS THAT ULTIMATELY LEADS TO MORE DETAILED DRAWINGS, BUT THE INFORMATION DEPICTED IN THESE DESIGNS IS INCOMPLETE AND NOT INTENDED TO REPRESENT THE FULL SCOPE OF THE PROJECT DESIGN. THE USE OF THESE CONCEPTUAL AND SCHEMATIC DESIGNS/RENDERINGS FOR ANY PURPOSE OTHER THAN AS INTENDED BY THE ARCHITECT IS PROHIBITED.

NORTH ELEVATION		
MATERIAL	AREA (SF)	%
CONCRETE TILT WALL		
COLOR A	115	0.2%
COLOR B	8,063	17%
COLOR C	13,865	29%
COLOR E	4,278	9%
CONCRETE TILT WALL W/ FORMLINER		
COLOR F	1,075	2%
COLOR J	10,144	21%
COLOR K	3,789	8%
WINDOWS (H)	781	2%
CANOPY/SHADE ELEMENT (D)	401	1%
OH DOOR	4,661	10%
HM DOOR (C)	309	1%
	47,481	100%

EXTERIOR MATERIAL LEGEND			
<div>A</div>	DUNN EDWARDS PAINT DET648 WHITE PICKET FENCE	<div>F</div>	TEXTURED CONCRETE : FLUTED RIB 1/2" DEEP, 6" OC DUNN EDWARDS PAINT DET668 WITH THE GRAIN
<div>B</div>	DUNN EDWARDS PAINT DET610 WOLVERINE	<div>G</div>	STOREFRONT SYSTEM: 1" INSULATED GLAZING, PPG AZURIA/SOLARBAN 70, IN CLEAR ANNOIDIZED ALUMINUM FRAME
<div>C</div>	DUNN EDWARDS PAINT DET616 EQUINOX	<div>J</div>	TEXTURED CONCRETE: FLUTED RIB 1/2" DEEP, 12" OC DUNN EDWARDS PAINT DET610 WOLVERINE
<div>D</div>	DUNN EDWARDS PAINT DEA187 BLACK	<div>K</div>	TEXTURED CONCRETE: FLUTED RIB 1/2" DEEP, 12" OC DUNN EDWARDS PAINT DET648 WHITE PICKET FENCE
<div>E</div>	DUNN EDWARDS PAINT DET668 WITH THE GRAIN		

KEYNOTES	
03-007	CONCRETE RAMP UP
05-015	DASHED LINE INDICATES ROOF LINE
07-004	ROOF DRAIN DAYLIGHT LOCATION
08-001	HOLLOW METAL DOOR AND FRAME - PAINTED
08-003	ALUMINUM FRAMED WINDOW
08-004	DOCK SECTIONAL DOOR
10-002	DOCK BUMPERS PER SPECS
16-001	WALL-MOUNTED LIGHT FIXTURE - SEE ELECTRICAL

GENERAL NOTES	
1.	ALL ROOF AND OVERFLOW DRAINS SHALL BE INTERNAL TO THE BUILDING.
2.	ALL FUTURE ROOF-TOP MECHANICAL EQUIPMENT SHALL BE FULLY SCREENED BY THE PARAPET.



CONCEPTUAL AND SCHEMATIC DESIGNS, INCLUDING RENDERINGS, ARE CREATED FOR THE SOLE PURPOSE OF DEVELOPING A DESIGN CONCEPT. THEY ARE PART OF THE OVERALL DESIGN PROCESS THAT ULTIMATELY LEADS TO MORE DETAILED DRAWINGS, BUT THE INFORMATION DEPICTED IN THESE DESIGNS IS INCOMPLETE AND NOT INTENDED TO REPRESENT THE FULL SCOPE OF THE PROJECT DESIGN. THE USE OF THESE CONCEPTUAL AND SCHEMATIC DESIGNS/RENDERINGS FOR ANY PURPOSE OTHER THAN AS INTENDED BY THE ARCHITECT IS PROHIBITED.

- GENERAL FINISH NOTES
1.

PROVIDE MM-80 EXPANSION JOINT FILLER AT SLAB ON GRADE
2.

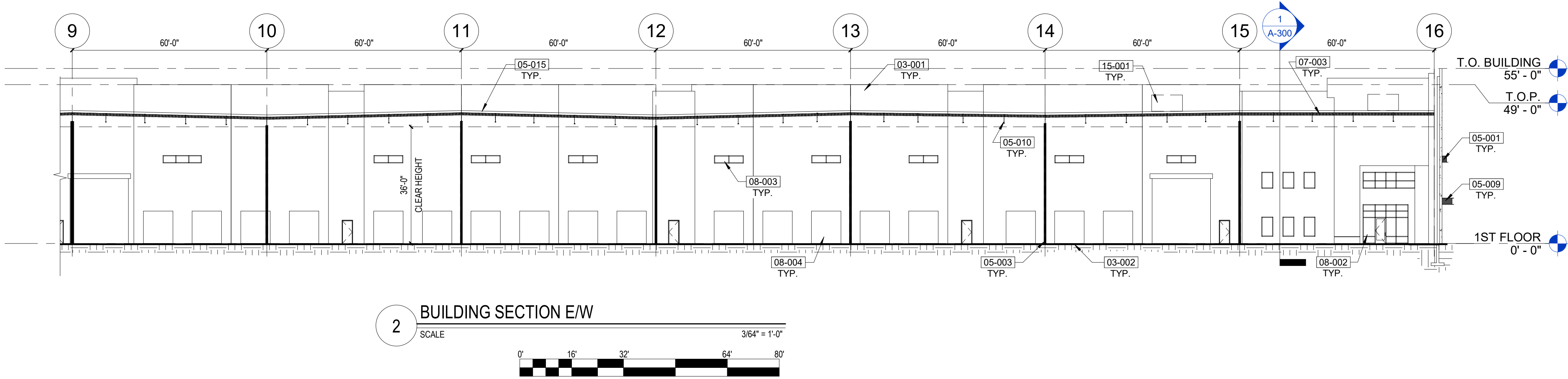
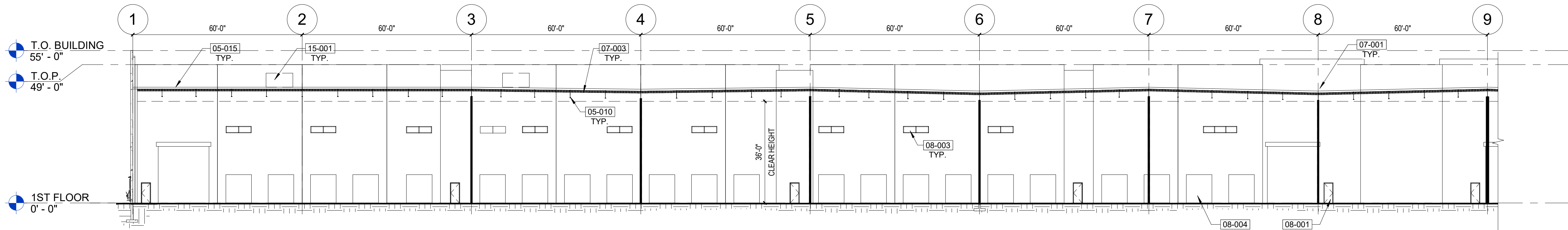
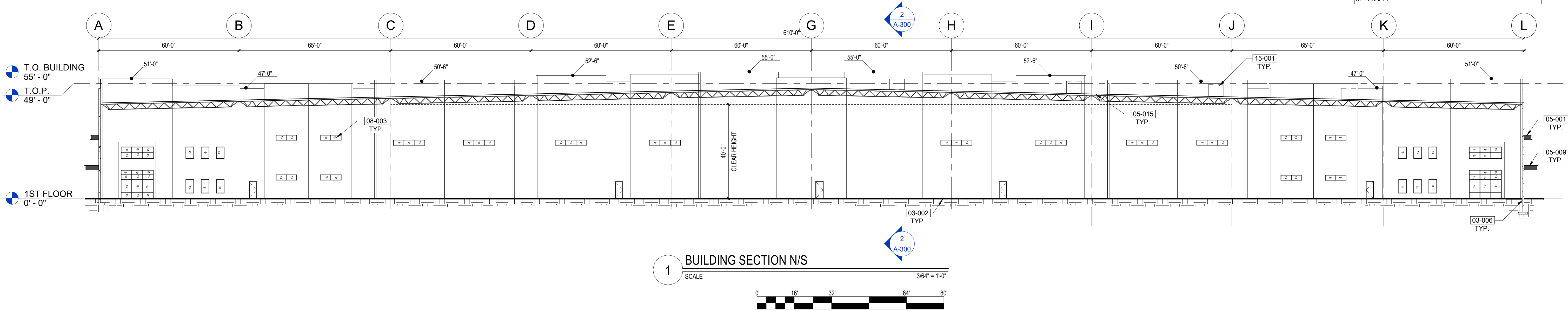
INTERIOR SLAB ON GRADE TO RECEIVE PENETRATING SEALER PER SPECS.
3.

INTERIOR TILT WALLS AND GYP. BOARD WALLS TO BE PAINTED TO BOTTOM OF DECK. SEE SPECS FOR PAINT SCHEDULE.
4.

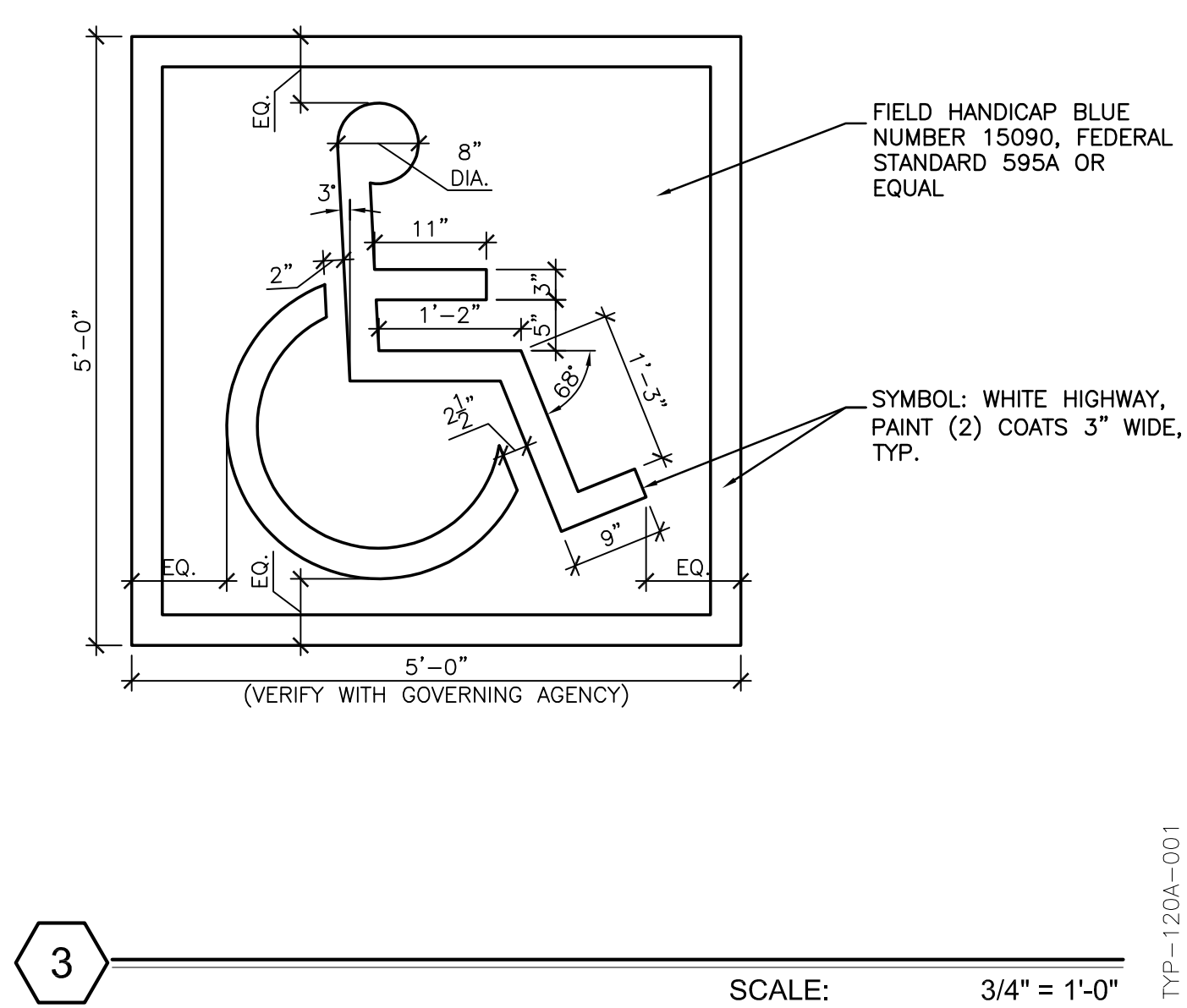
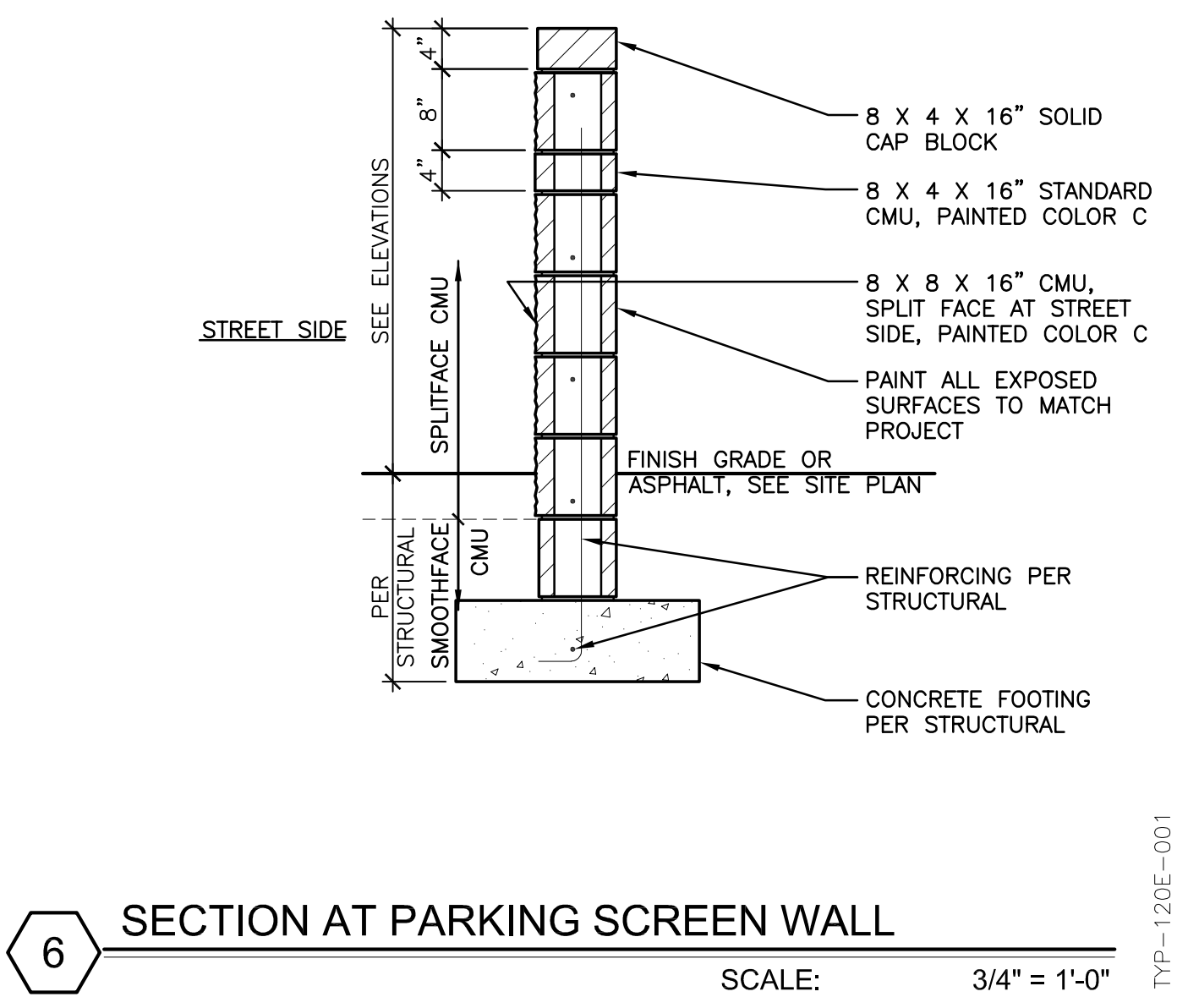
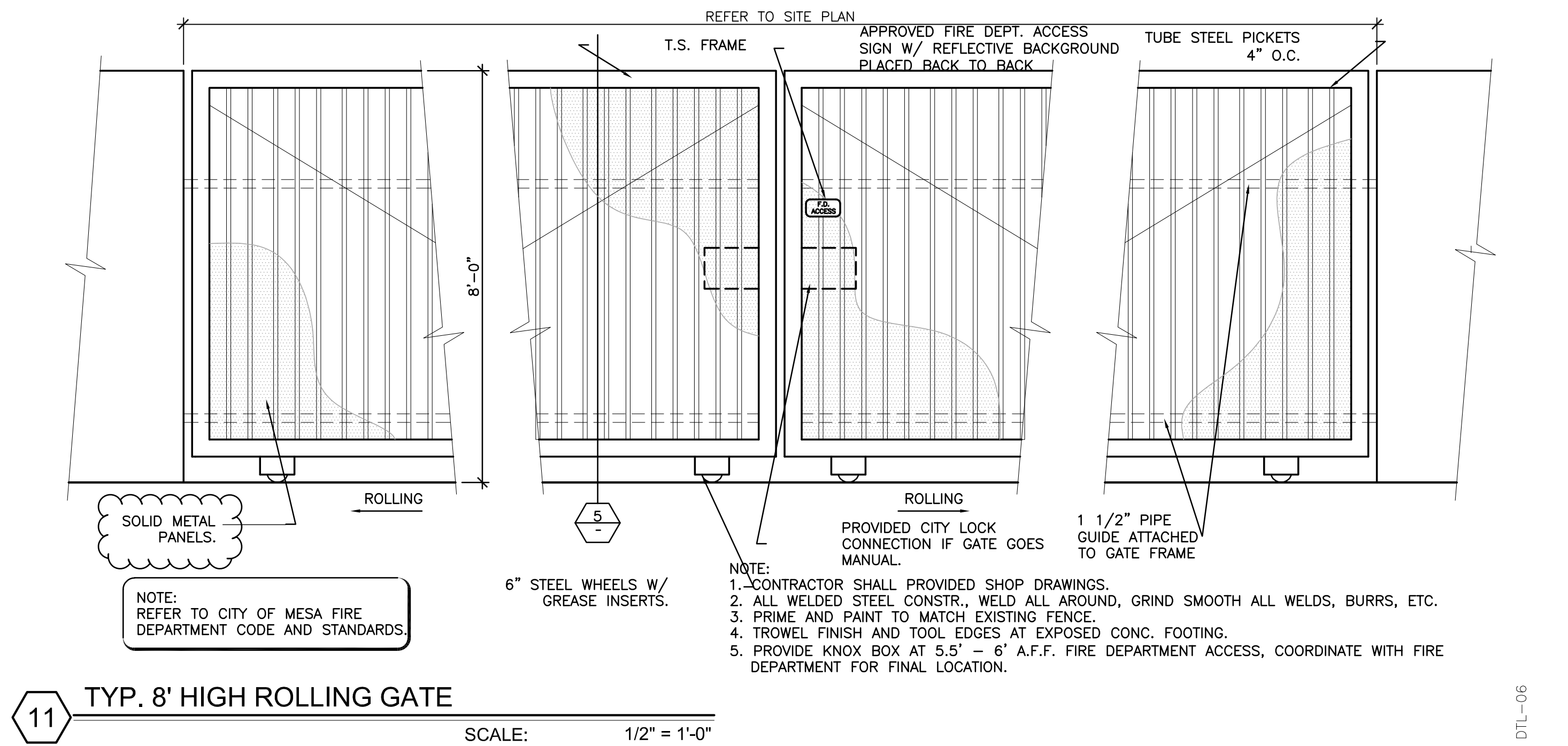
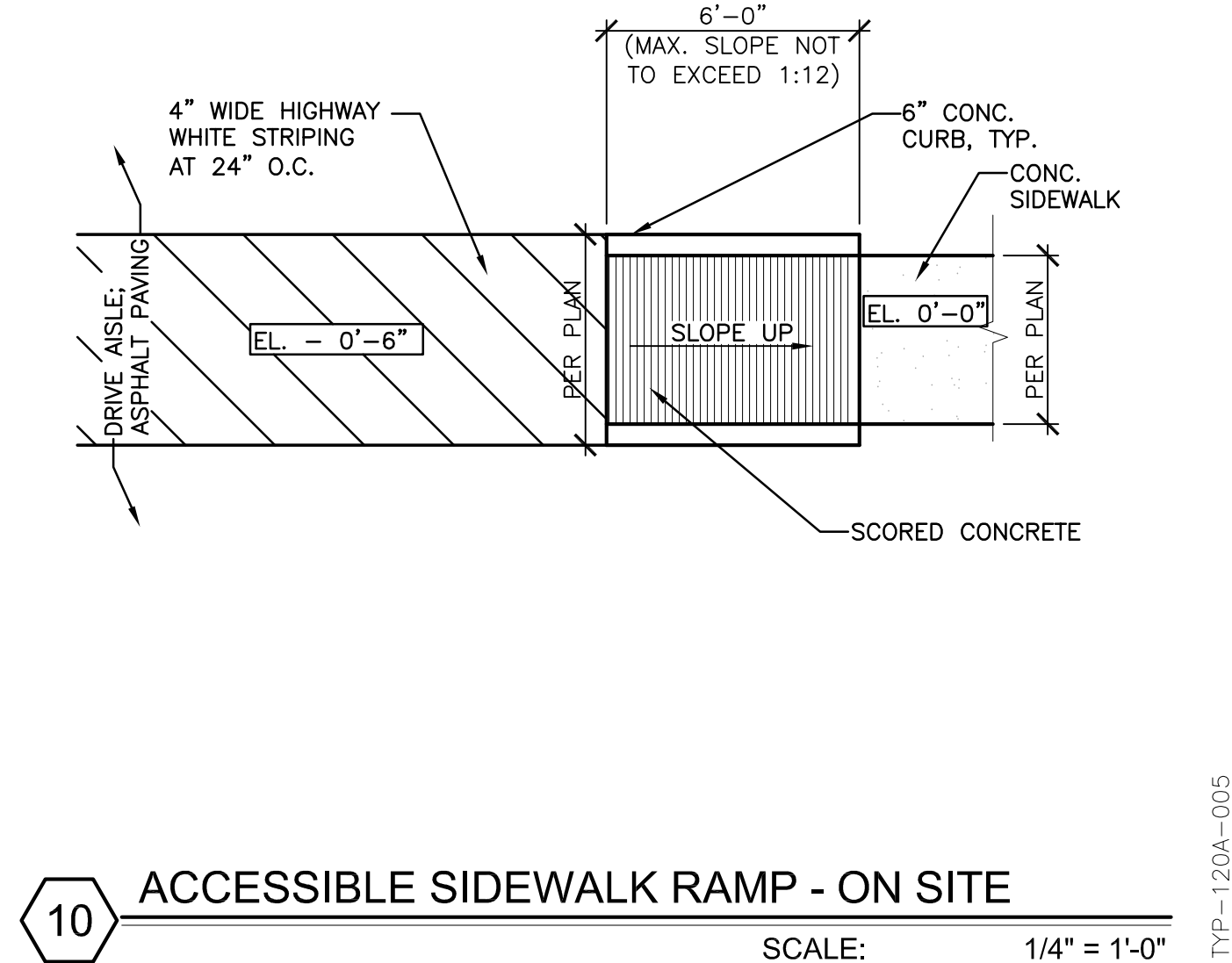
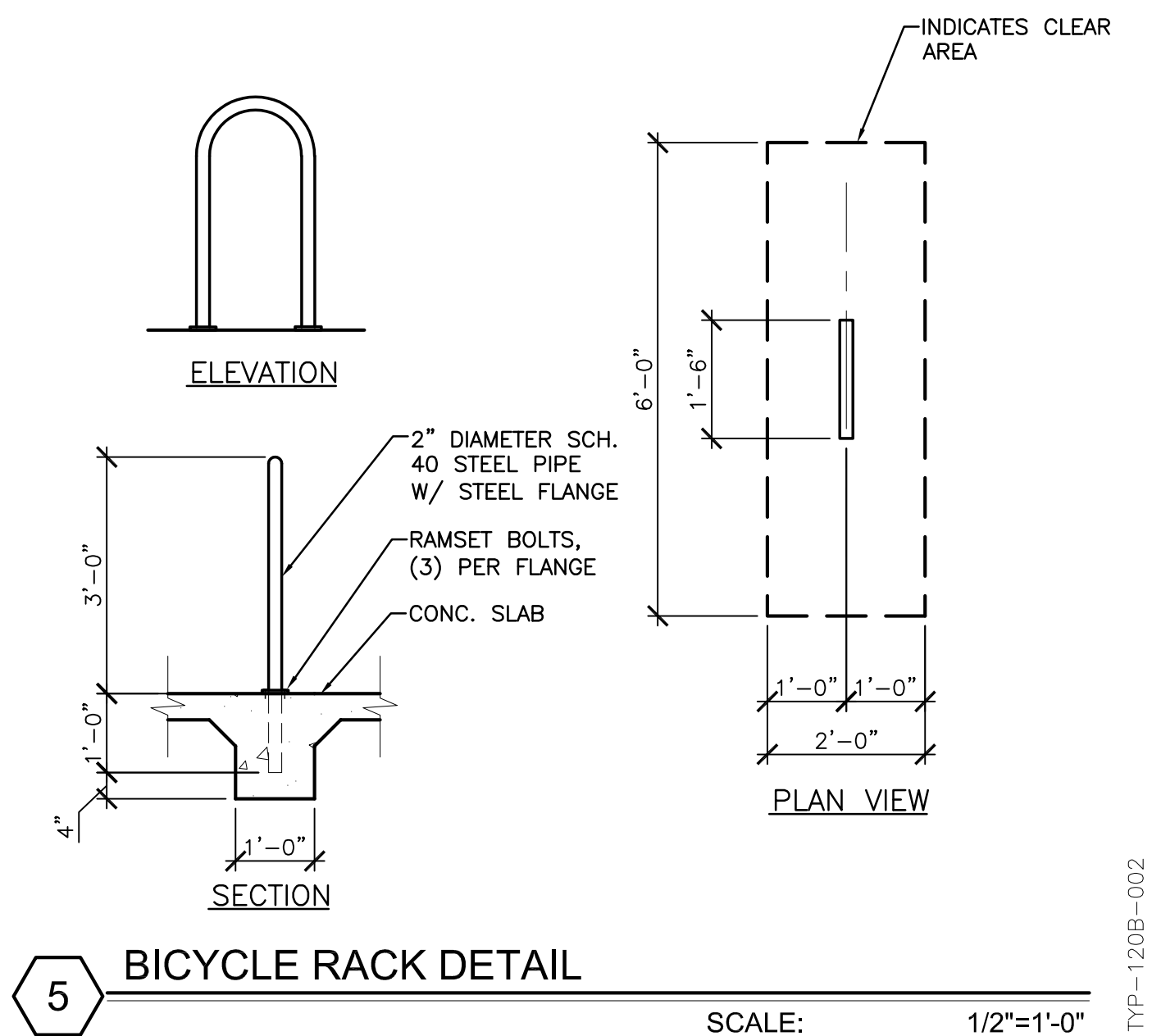
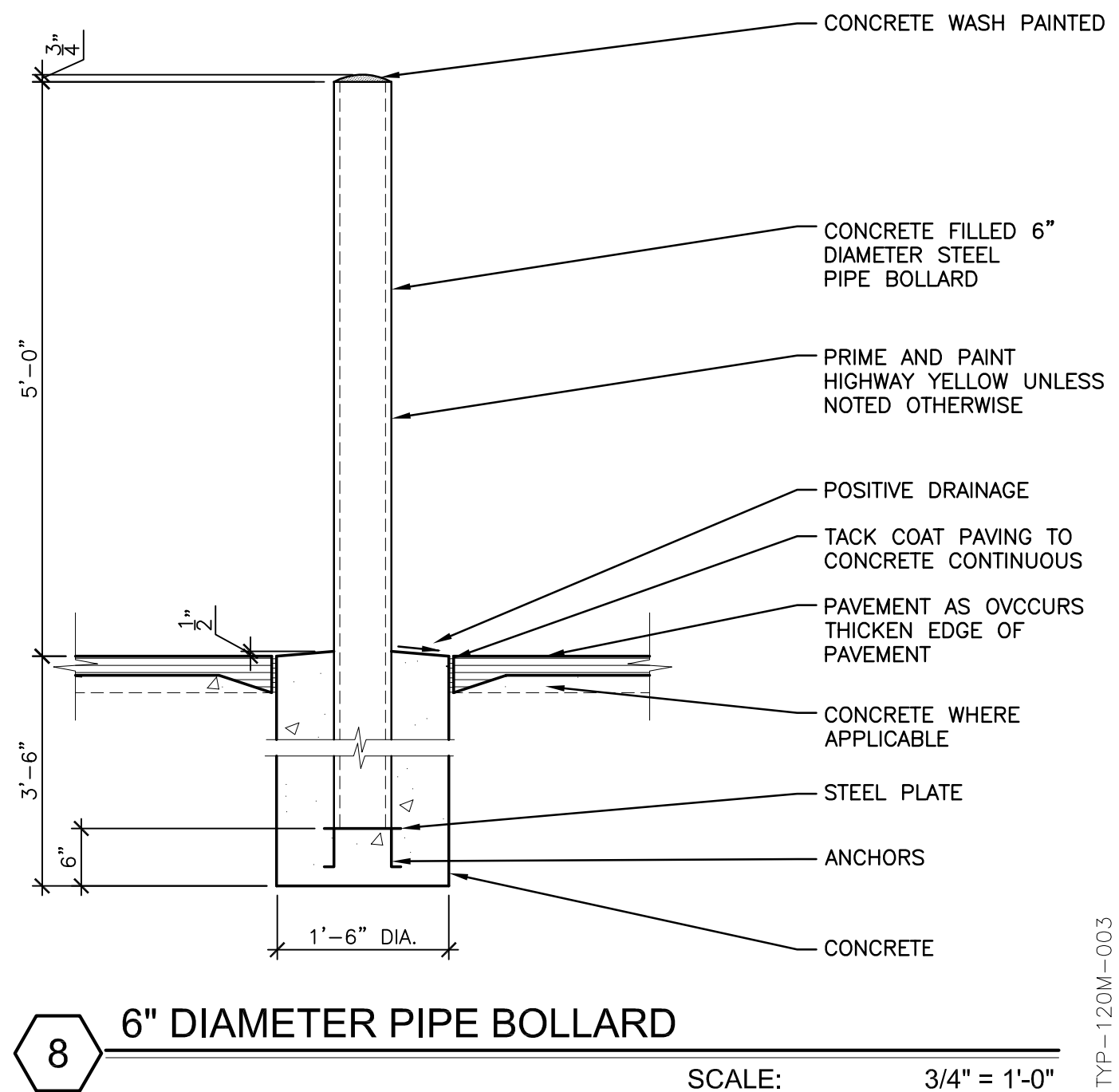
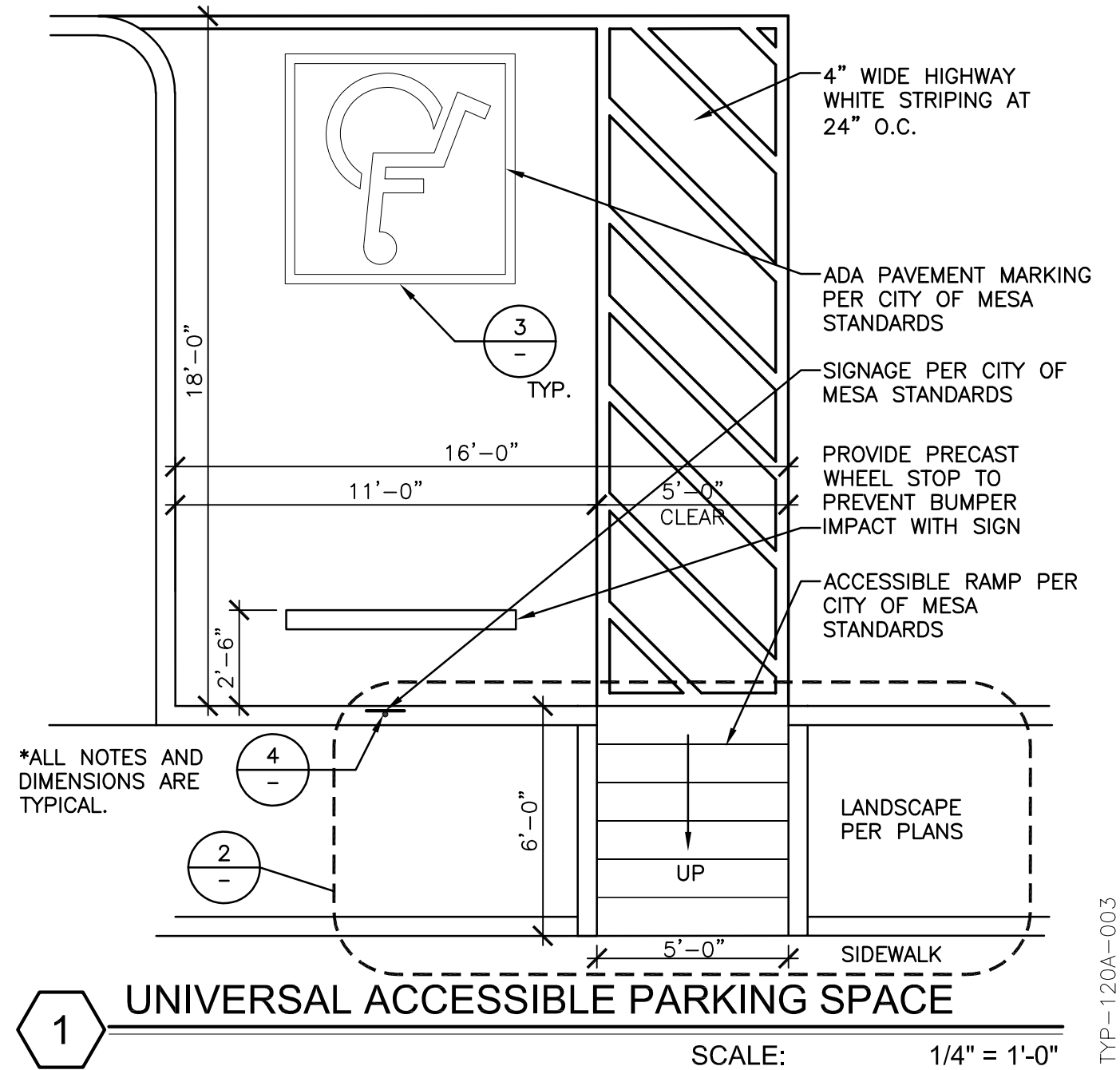
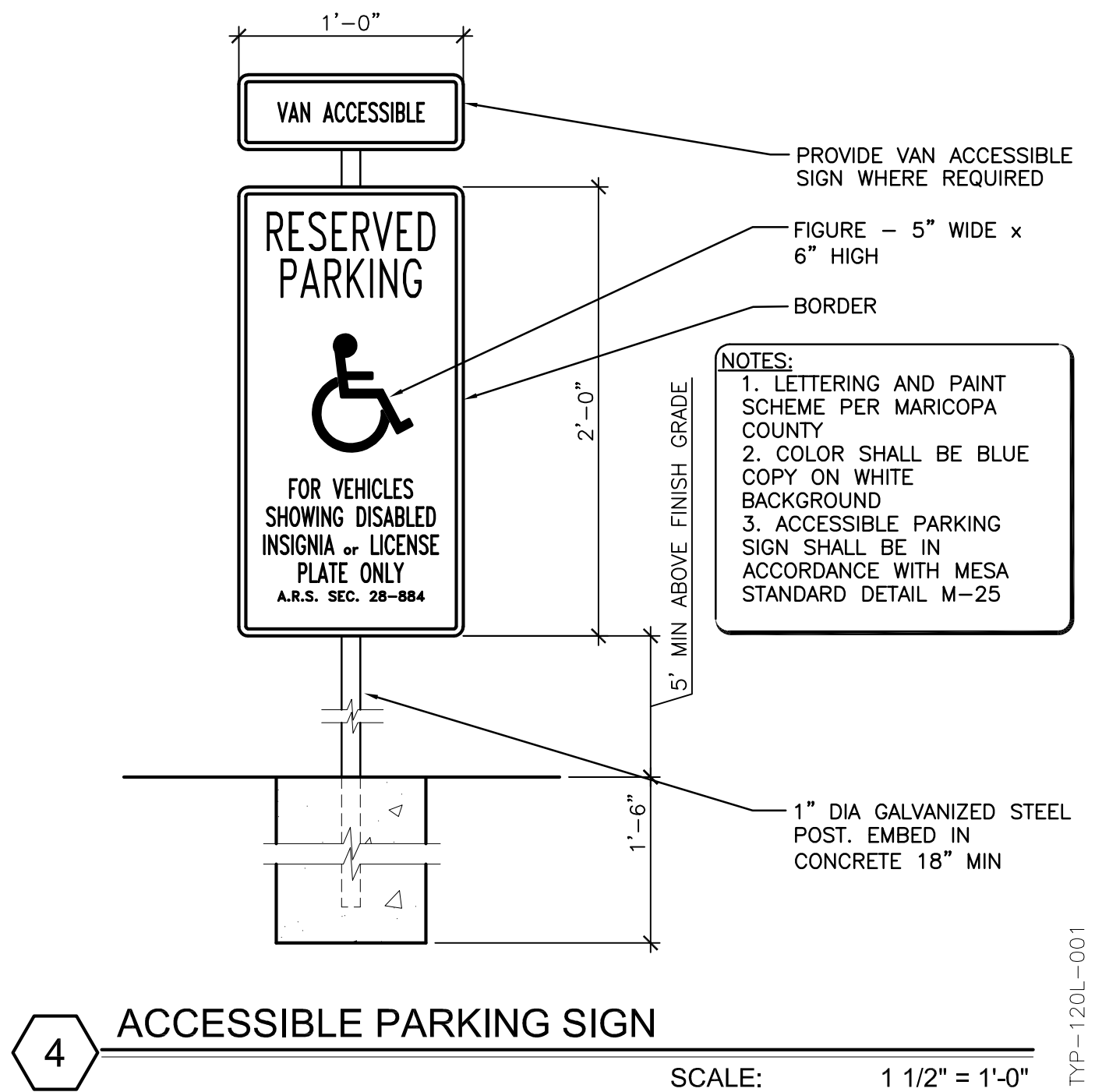
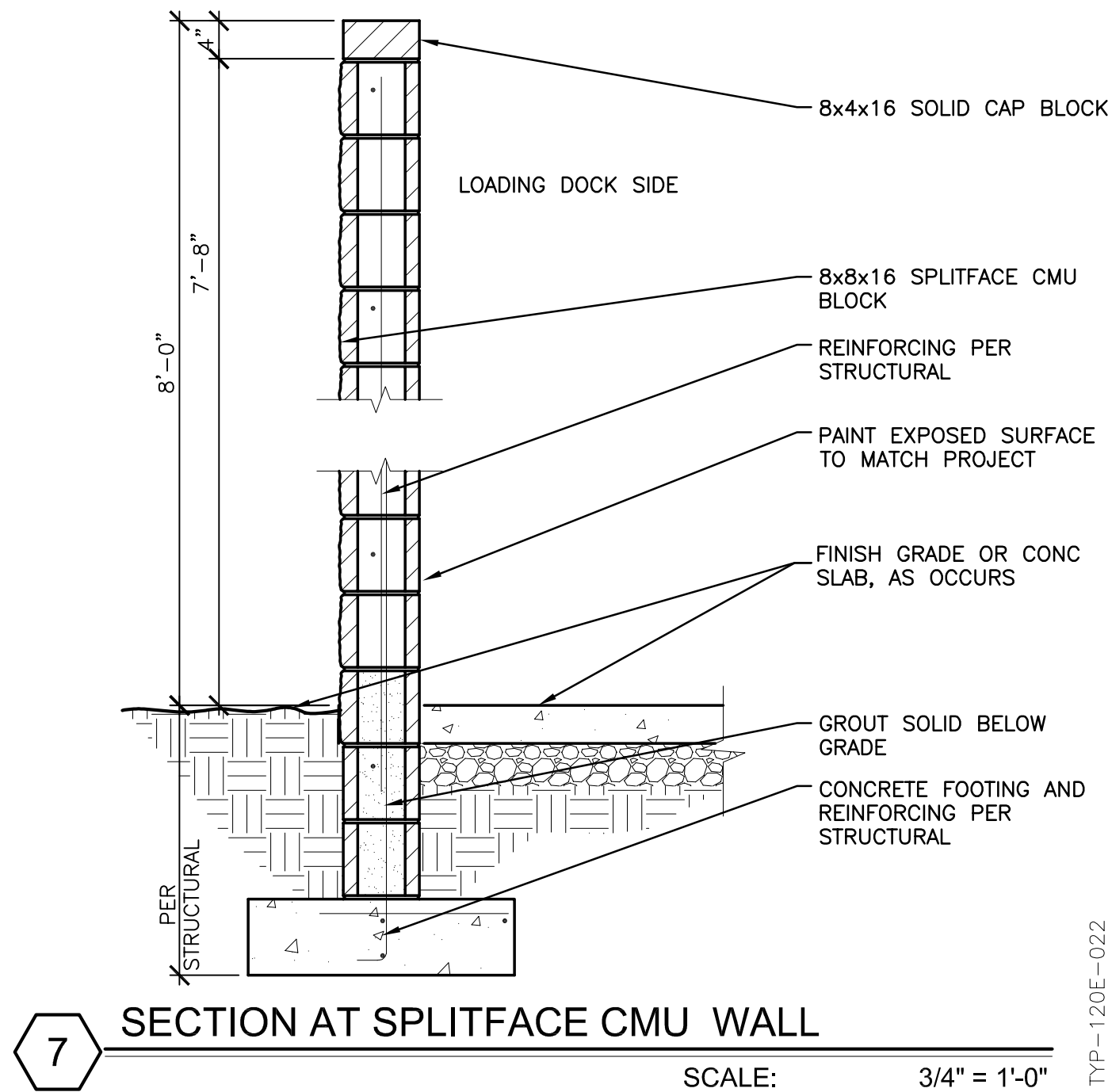
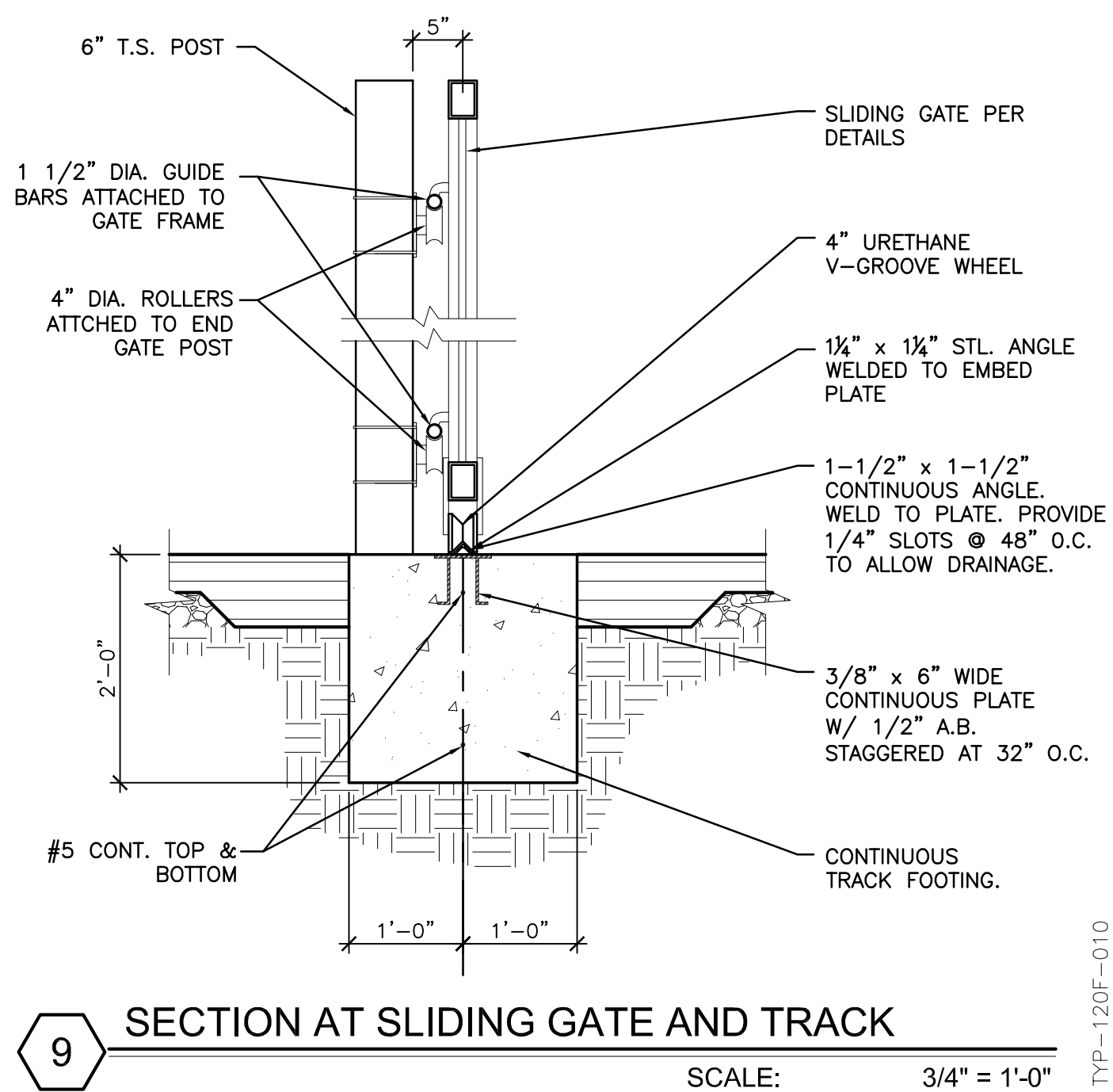
HOLLOW METAL DOORS AND FRAMES, AND MISC. STEEL SHALL BE PAINTED PER SPECS
4.

COLUMNS TO BE PAINTED SAFETY YELLOW TO 8'-0" AFF

KEYNOTES	
03-001	CONCRETE TILT PANEL WALL WITH HORIZONTAL AND/OR VERTICAL REVEALS - PAINTED
03-002	CONCRETE SLAB ON GRADE
03-006	FOUNDATION PER STRUCTURAL
05-001	STEEL CANOPY-PAINTED
05-003	STEEL COLUMN PER STRUCTURAL, PAINTED SAFETY YELLOW TO 8'-0" A.F.F.
05-009	STEEL C-CHANNEL SHADE ELEMENT
05-010	OPEN WEB JOIST PER STRUCTURAL
05-015	DASHED LINE INDICATES ROOF LINE
07-001	SCUPPER AND DOWNSPOUT WITH OVERFLOW SCUPPER, PAINTED TO MATCH BUILDING
07-003	R-38 BATT INSULATION WITH WHITE SCRIM
08-001	HOLLOW METAL DOOR AND FRAME - PAINTED
08-002	ALUMINUM STOREFRONT SYSTEM
08-003	ALUMINUM FRAMED WINDOW
08-004	DOCK SECTIONAL DOOR
15-001	FUTURE MECHANICAL UNIT LOCATION ON ROOF FULLY SCREENED BY PARAPET



CONCEPTUAL AND SCHEMATIC DESIGNS, INCLUDING RENDERINGS, ARE CREATED FOR THE SOLE PURPOSE OF DEVELOPING A DESIGN CONCEPT. THEY ARE PART OF THE OVERALL DESIGN PROCESS THAT ULTIMATELY LEADS TO MORE DETAILED DRAWINGS, BUT THE INFORMATION DEPICTED IN THESE DESIGNS IS INCOMPLETE AND NOT INTENDED TO REPRESENT THE FULL SCOPE OF THE PROJECT DESIGN. THE USE OF THESE CONCEPTUAL AND SCHEMATIC DESIGNS/RENDERINGS FOR ANY PURPOSE OTHER THAN AS INTENDED BY THE ARCHITECT IS PROHIBITED.





1 SOUTH ENTRY - PERSECTIVE
SCALE



2 EAST SIDE - PERSPECTIVE
SCALE

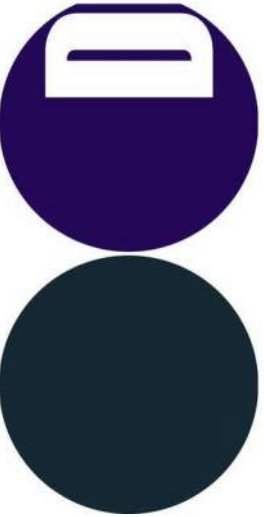
CONCEPTUAL AND SCHEMATIC DESIGNS, INCLUDING RENDERINGS, ARE CREATED FOR THE SOLE PURPOSE OF DEVELOPING A DESIGN CONCEPT. THEY ARE PART OF THE OVERALL DESIGN PROCESS THAT ULTIMATELY LEADS TO MORE DETAILED DRAWINGS, BUT THE INFORMATION DEPICTED IN THESE DESIGNS IS INCOMPLETE AND NOT INTENDED TO REPRESENT THE FULL SCOPE OF THE PROJECT DESIGN. THE USE OF THESE CONCEPTUAL AND SCHEMATIC DESIGNS/RENDERINGS FOR ANY PURPOSE OTHER THAN AS INTENDED BY THE ARCHITECT IS PROHIBITED.



WETTA GATEWAY COMMERCE CENTER II
ARCHITECTURE GROUP
RENDERINGS

21155.00
2/1/22

WWW.2929.COM



A-214