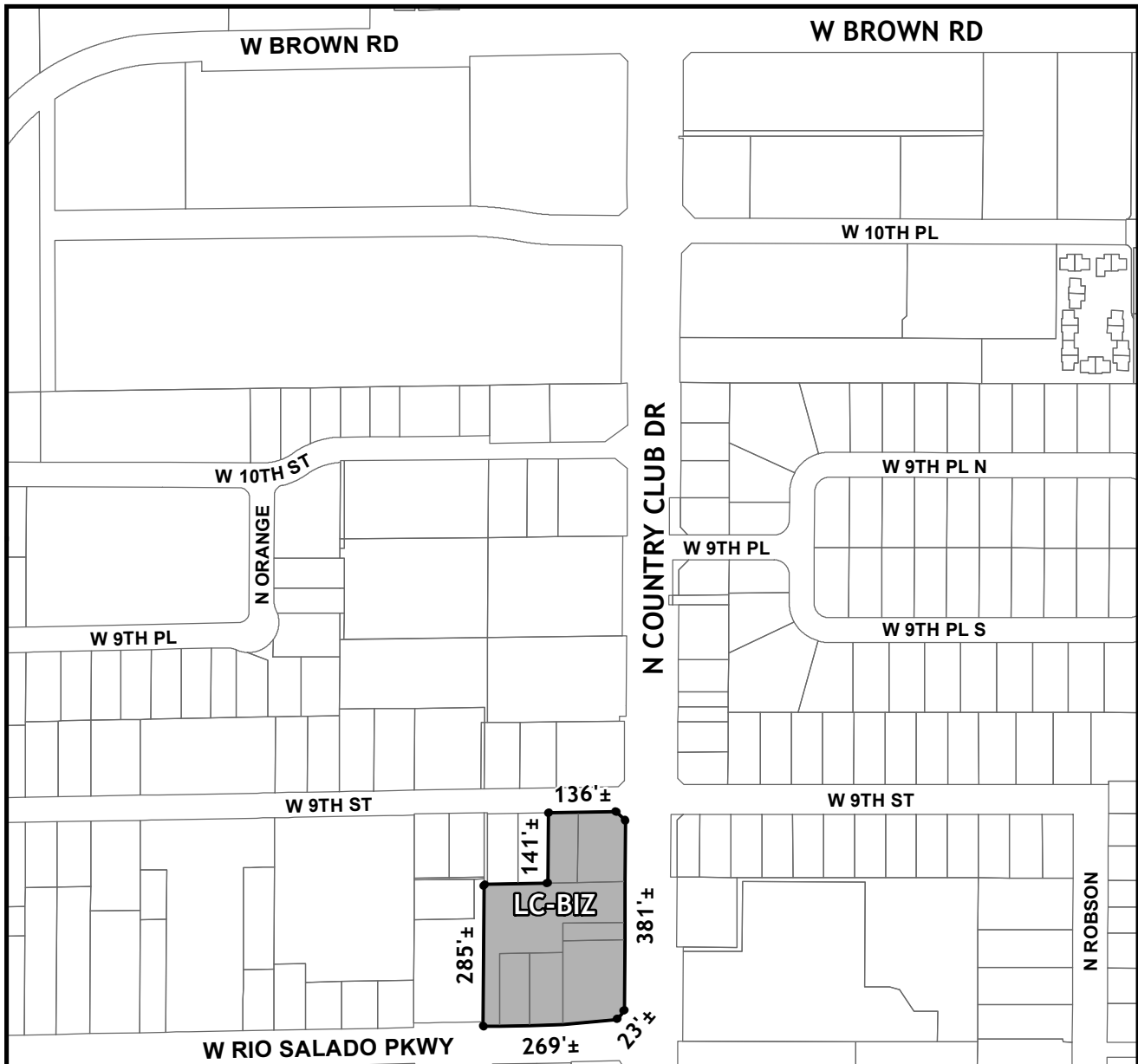




# OFFICIAL SUPPLEMENTARY ZONING MAP AMENDING THE CITY OF MESA ZONING MAP



CASE: ZON22-00160

ACREAGE: 2.3±

REQUEST: REZONE FROM MULTIPLE RESIDENCE (RM-4) AND LIMITED COMMERCIAL (LC) TO LIMITED COMMERCIAL WITH A BONUS INTENSITY ZONE OVERLAY (LC-BIZ) AND SITE PLAN REVIEW.

ORDINANCE: \_\_\_\_\_

Please be advised that the attached zoning changes were approved by the Mesa City Council on \_\_\_\_\_, 2022 by Ordinance # \_\_\_\_\_. If you have any questions concerning these changes, contact the City of Mesa Planning Division at 480-644-2385.

ATTEST: \_\_\_\_\_ DATE: \_\_\_\_\_

MAYOR

CITY CLERK