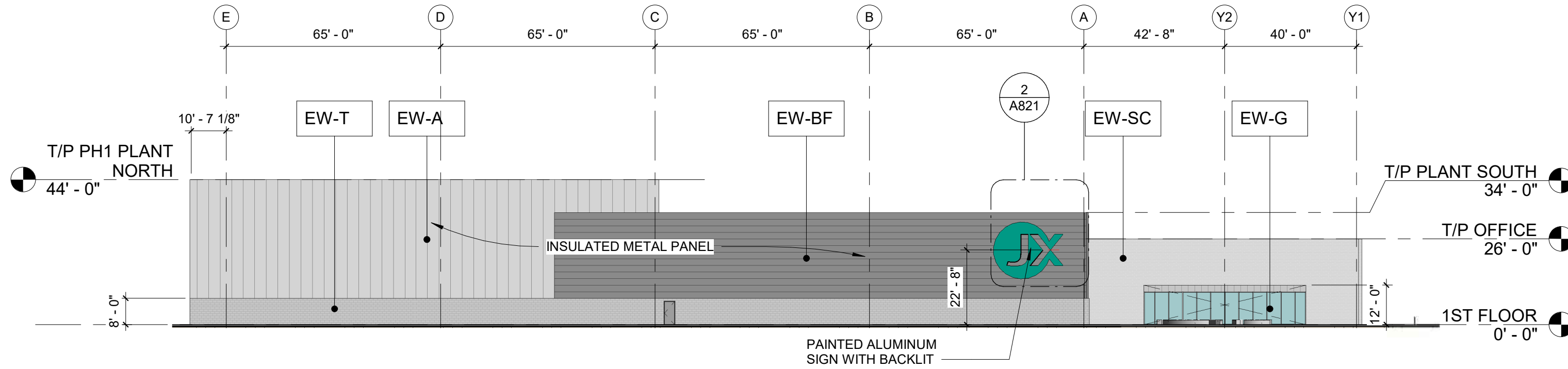


COLOR/MATERIAL SCHEDULE					
MARK	DESCRIPTION	FINISH/COLOR	MODEL	MANUFACTURER	COMMENTS/NOTE
EW-A	INSULATED METAL PANEL		KS SERIES	KINGSPAN	
EW-BF	INSULATED METAL PANEL		KARRIER PANEL - FLAT	KINGSPAN	
EW-BW	INSULATED METAL PANEL		KARRIER PANEL - MODIFIED SHARK FIN	KINGSPAN	ACCENT PLANK: CONVEX PLAN
EW-C	INSULATED METAL PANEL		KARRIER PANEL - FLAT	KINGSPAN	
EW-SC	STACKED STONE VENEER PANEL		WHITE/IVORY	TBD	
EW-T	TILE FINISH ON IMP		AVORI SATIN	NEOLITH	
EW-T1	TILE FINISH ON IMP		BASALT GREY	NEOLITH	
EW-T2	TILE FINISH ON IMP		BETON	NEOLITH	
EW-W	TILE FINISH ON IMP		SUMMER DALE	NEOLITH	
EW-M	INSULATED METAL PANEL		KS SERIES		
EC1	NICHIHA PANEL - CEILING		SUMMER DALE	NEOLITH	
GLAZING	STOREFRONT GLASS WALL		TRIFAB 451/451T SSG SYSTEM	KAWNEER	1" DOUBLE PANE TEMPERED LOW E GLASS, SHGC=0.25 (SOLARBAN 60(2) SOLARGRAY+CLEAR, VITRO)

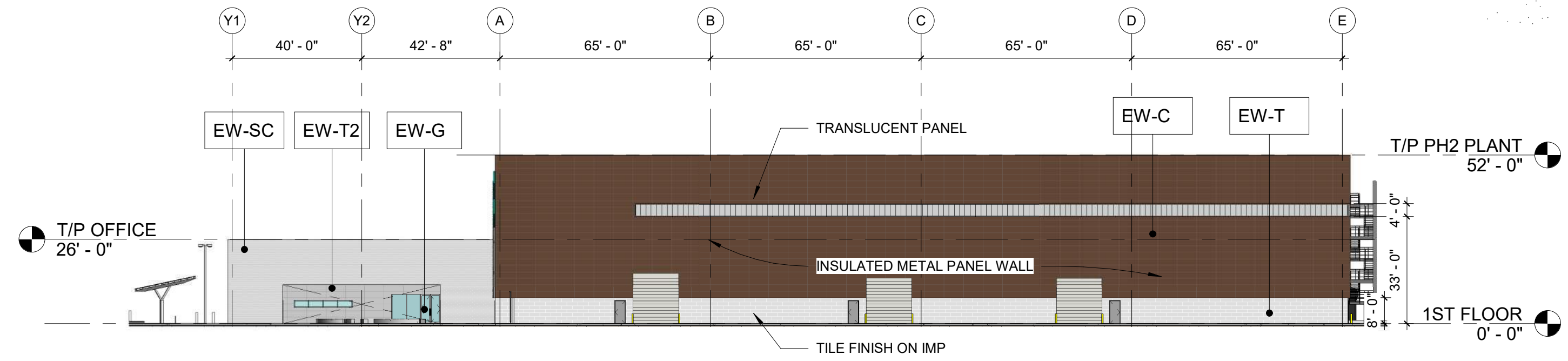


COLOR ELEV VIEW - WEST

SCALE: 1" = 30'-0"

4

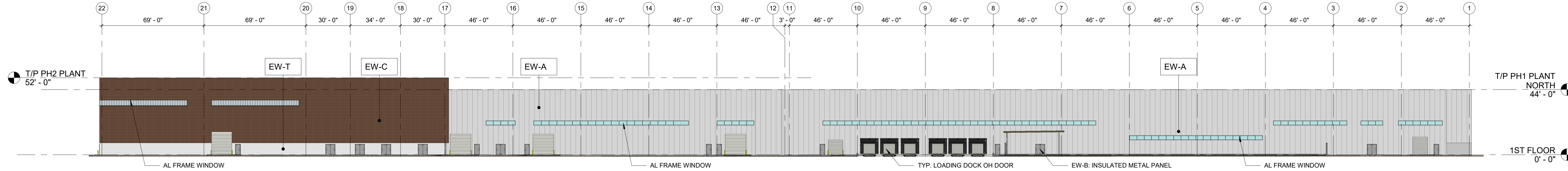
BUILDING ELEVATION MATERIAL CALCULATIONS				
	NORTH : SQ FT (%)	WEST : SQ FT (%)	EAST : SQ FT (%)	SOUTH: SQ FT (%)
INSULATED METAL PANEL	37053.42 (87.62%)	8511.6 (66.3%)	10412.67 (85.69%)	24874.2 (64.6%)
STONE VENEER ON IMP	-	1563 (12.2%)	1584.42 (10.0%)	6042.04 (15.7%)
GLASS	1998.1 (4.72%)	490.83 (3.52%)	1057.1 (6.67%)	3194.64 (8.3%)
METAL ACCENT WALL	-	-	-	120 (0.30%)
TILE FINISH ON IMP	1565.54 (3.7%)	2249.2 (17.51%)	2091.76 (13.19%)	4257.55 (11%)
DOOR/OPENING	1664 (3.96%)	30.6 (0.47%)	706 (4.45%)	135 (1.2%)
TOTAL	42286.5 (100%)	12845.2 (100%)	15851.87 (100%)	38503.42 (100%)



COLOR ELEV VIEW - EAST

SCALE: 1/32" = 1'-0"

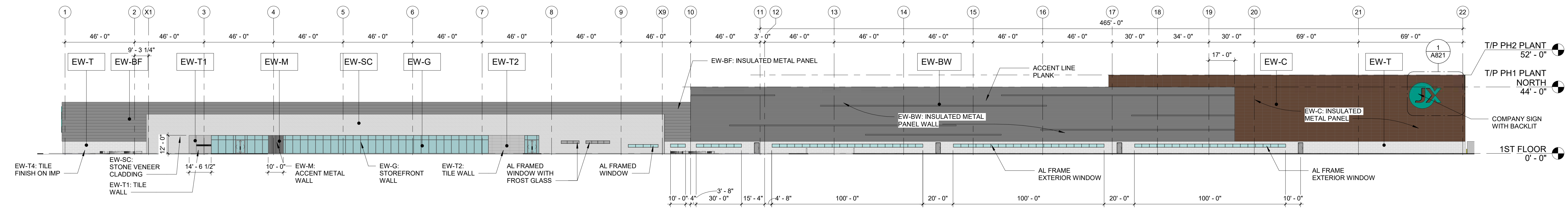
3



COLOR ELEV VIEW - NORTH

SCALE: 1/32" = 1'-0"

2



COLOR ELEV VIEW - SOUTH

SCALE: 1/32" = 1'-0"

1

PRINTED ON: 3/18/2022 2:16:58 AM

KAJIMA ASSOCIATES INC.

ARCHITECTURE • ENGINEERING • INTERIORS

3490 PIEDMONT ROAD, SUITE 300 ATLANTA, GEORGIA 30305 (404) 812-8500

THE IDEAS, DESIGNS, DRAWINGS, AND SPECIFICATIONS REPRESENTED HERE ARE AND SHALL REMAIN THE PROPERTY OF KAJIMA ASSOCIATES, INC. AND ANY REPRODUCTIONS, REUSE, SALE OR OTHER DISPOSITION OF THESE DOCUMENTS FOR OTHER THAN THE SPECIFIC PROJECT FOR WHICH THEY HAVE BEEN PREPARED AND DEVELOPED IS EXPRESSLY FORBIDDEN WITHOUT WRITTEN CONSENT OF THE ARCHITECT AND/OR ENGINEER. VISUAL CONTACT WITH THESE DRAWINGS OR SPECIFICATIONS SHALL CONSTITUTE EVIDENCE OF THE ACCEPTANCE OF THESE RESTRICTIONS. © COPYRIGHT BY KAJIMA ASSOCIATES, INC.

KAJIMA ASSOCIATES, INC.

3490 PIEDMONT RD. NE, SUITE 900, ATLANTA, GA 30305

Kimlev-Horn

7740 N. 16th Street, Suite 300, Phoenix, AZ 85020

ARCHITECT:

STRUCTURAL ENGINEER:

MECHANICAL / PLUMBING / FIRE PROTECTION / ELECTRICAL ENGINEER:

CIVIL ENGINEER & LANDSCAPE ARCHITECT:

SEAL:

REGISTERED ARCHITECT

64628

YOSHIYUKI KOSHIYAMA

DATE SIGNED 3/17/2022

ARIZONA U.S.A.

JX

JX NIPPON MINNING AND METAL

10430 E. Germann Rd, Mesa, Arizona 85212

PROJECT: PROJECT EARL, AZ

DATE	#	REMARKS	REVISIONS:
2022-02-09	5	ISSUED FOR 1st CITY PLAN & DESIGN REVIEW	
2022-03-18	6	ISSUED FOR 2nd CITY PLAN & DESIGN REVIEW	

SHEET TITLE: ELEVATION - COLOR

PROJECT NO.:	80-21940
PROJECT MANAGER:	KAI
PROJECT DESIGNER:	KAI
DRAWN BY:	Author
CHECKED BY:	Checker
SCALE:	As indicated

A212

NOT FOR CONSTRUCTION

- 01:

INSULATED METAL PANEL-1
- 02:

INSULATED METAL PANEL-2
- 03:

INSULATED METAL PANEL-3
- 03A:

INSULATED METAL PANEL-3A
- ACCENT LINE PLANK
- 04:

INSULATED METAL PANEL-4
- 06:

STOREFRONT GLASS WALL
- 07:

TRANSLUCENT WALL PANEL
- 08:

TILE FINISH PANEL WALL
- 09:

TILE FINISH PANEL WALL
- 10:

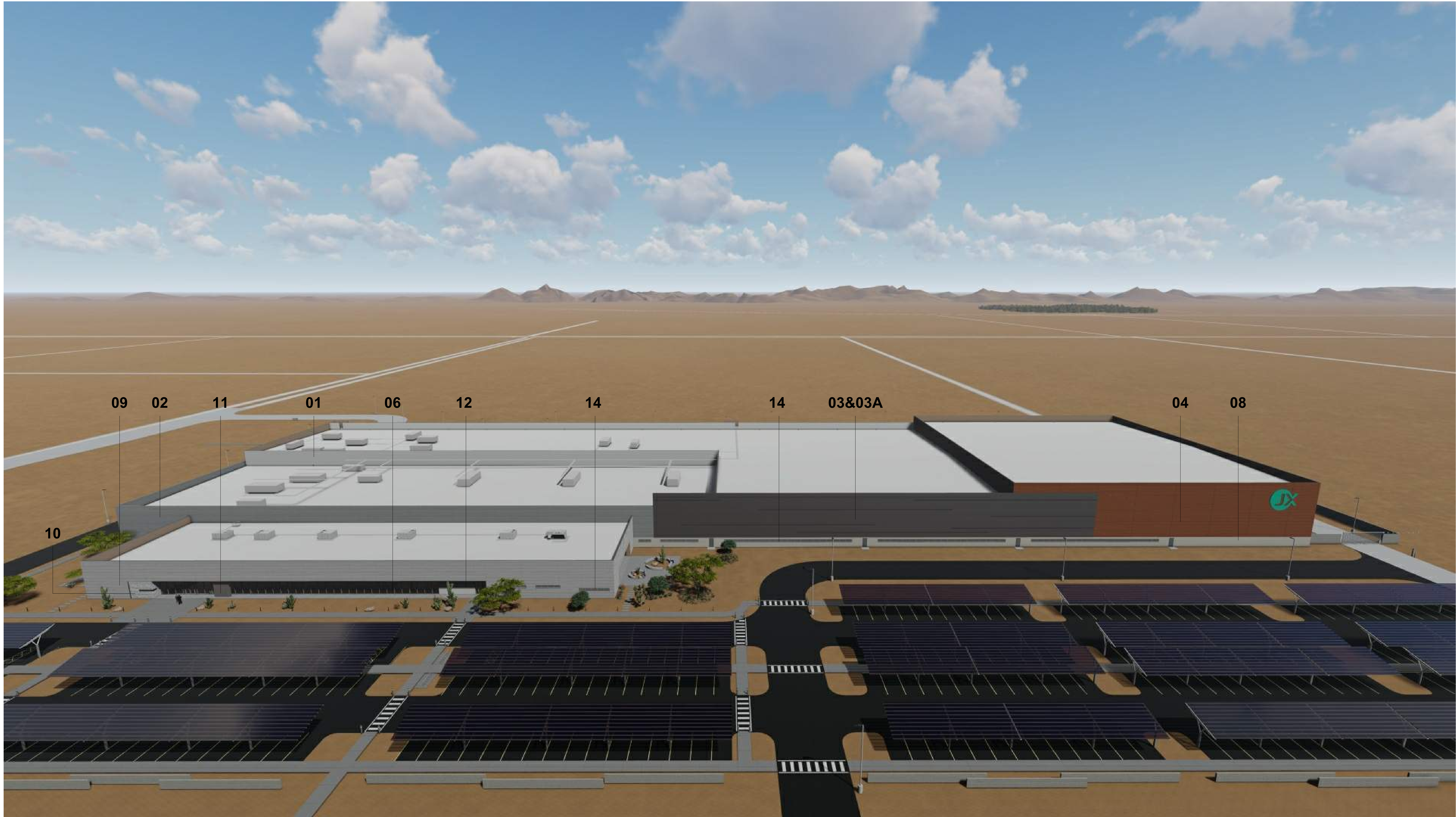
ACCENT WALL-1 - STONE
CLADDING VENEER
- 11:

ACCENT WALL-2
- 12:

ACCENT WALL-3
- 13:

WALL & CEILING PANEL - WOOD
PATTERN
- 14:

ALUMINUM WINDOW FRAME &
GLAZING (DOUBLE PANE)



- 01:

INSULATED METAL PANEL-1
- 02:

INSULATED METAL PANEL-2
- 03:

INSULATED METAL PANEL-3
- 03A:

INSULATED METAL PANEL-3A
- ACCENT LINE PLANK
- 04:

INSULATED METAL PANEL-4
- 06:

STOREFRONT GLASS WALL
- 07:

TRANSLUCENT WALL PANEL
- 08:

TILE FINISH PANEL WALL
- 09:

TILE FINISH PANEL WALL
- 10:

ACCENT WALL-1 - STONE
CLADDING VENEER
- 11:

ACCENT WALL-2
- 12:

ACCENT WALL-3
- 13:

WALL & CEILING PANEL - WOOD
PATTERN
- 14:

ALUMINUM WINDOW FRAME &
GLAZING (DOUBLE PANE)



- 01:

INSULATED METAL PANEL-1
- 02:

INSULATED METAL PANEL-2
- 03:

INSULATED METAL PANEL-3
- 03A:

INSULATED METAL PANEL-3A
- ACCENT LINE PLANK
- 04:

INSULATED METAL PANEL-4
- 06:

STOREFRONT GLASS WALL
- 07:

TRANSLUCENT WALL PANEL
- 08:

TILE FINISH PANEL WALL
- 09:

TILE FINISH PANEL WALL
- 10:

ACCENT WALL-1 - STONE
CLADDING VENEER
- 11:

ACCENT WALL-2
- 12:

ACCENT WALL-3
- 13:

WALL & CEILING PANEL - WOOD
PATTERN
- 14:

ALUMINUM WINDOW FRAME &
GLAZING (DOUBLE PANE)



- 01:

INSULATED METAL PANEL-1
- 02:

INSULATED METAL PANEL-2
- 03:

INSULATED METAL PANEL-3
- 03A:

INSULATED METAL PANEL-3A
- ACCENT LINE PLANK
- 04:

INSULATED METAL PANEL-4
- 06:

STOREFRONT GLASS WALL
- 07:

TRANSLUCENT WALL PANEL
- 08:

TILE FINISH PANEL WALL
- 09:

TILE FINISH PANEL WALL
- 10:

ACCENT WALL-1 - STONE
CLADDING VENEER
- 11:

ACCENT WALL-2
- 12:

ACCENT WALL-3
- 13:

WALL & CEILING PANEL - WOOD
PATTERN
- 14:

ALUMINUM WINDOW FRAME &
GLAZING (DOUBLE PANE)



- 01: INSULATED METAL PANEL-1

02: INSULATED METAL PANEL-2

03: INSULATED METAL PANEL-3

03A: INSULATED METAL PANEL-3A
- ACCENT LINE PLANK

04: INSULATED METAL PANEL-4

06: STOREFRONT GLASS WALL
- 07: TRANSLUCENT WALL PANEL

08: TILE FINISH PANEL WALL

09: TILE FINISH PANEL WALL

10: ACCENT WALL-1 - STONE
CLADDING VENEER

11: ACCENT WALL-2

12: ACCENT WALL-3
- 13: WALL & CEILING PANEL - WOOD
PATTERN

14: ALUMINUM WINDOW FRAME &
GLAZING (DOUBLE PANE)



- 01:

INSULATED METAL PANEL-1
- 02:

INSULATED METAL PANEL-2
- 03:

INSULATED METAL PANEL-3
- 03A:

INSULATED METAL PANEL-3A
- ACCENT LINE PLANK
- 04:

INSULATED METAL PANEL-4
- 06:

STOREFRONT GLASS WALL
- 07:

TRANSLUCENT WALL PANEL
- 08:

TILE FINISH PANEL WALL
- 09:

TILE FINISH PANEL WALL
- 10:

ACCENT WALL-1 - STONE
CLADDING VENEER
- 11:

ACCENT WALL-2
- 12:

ACCENT WALL-3
- 13:

WALL & CEILING PANEL - WOOD
PATTERN
- 14:

ALUMINUM WINDOW FRAME &
GLAZING (DOUBLE PANE)

