



DESIGN REVIEW BOARD

May 10, 2022



DRB22-00159



Request

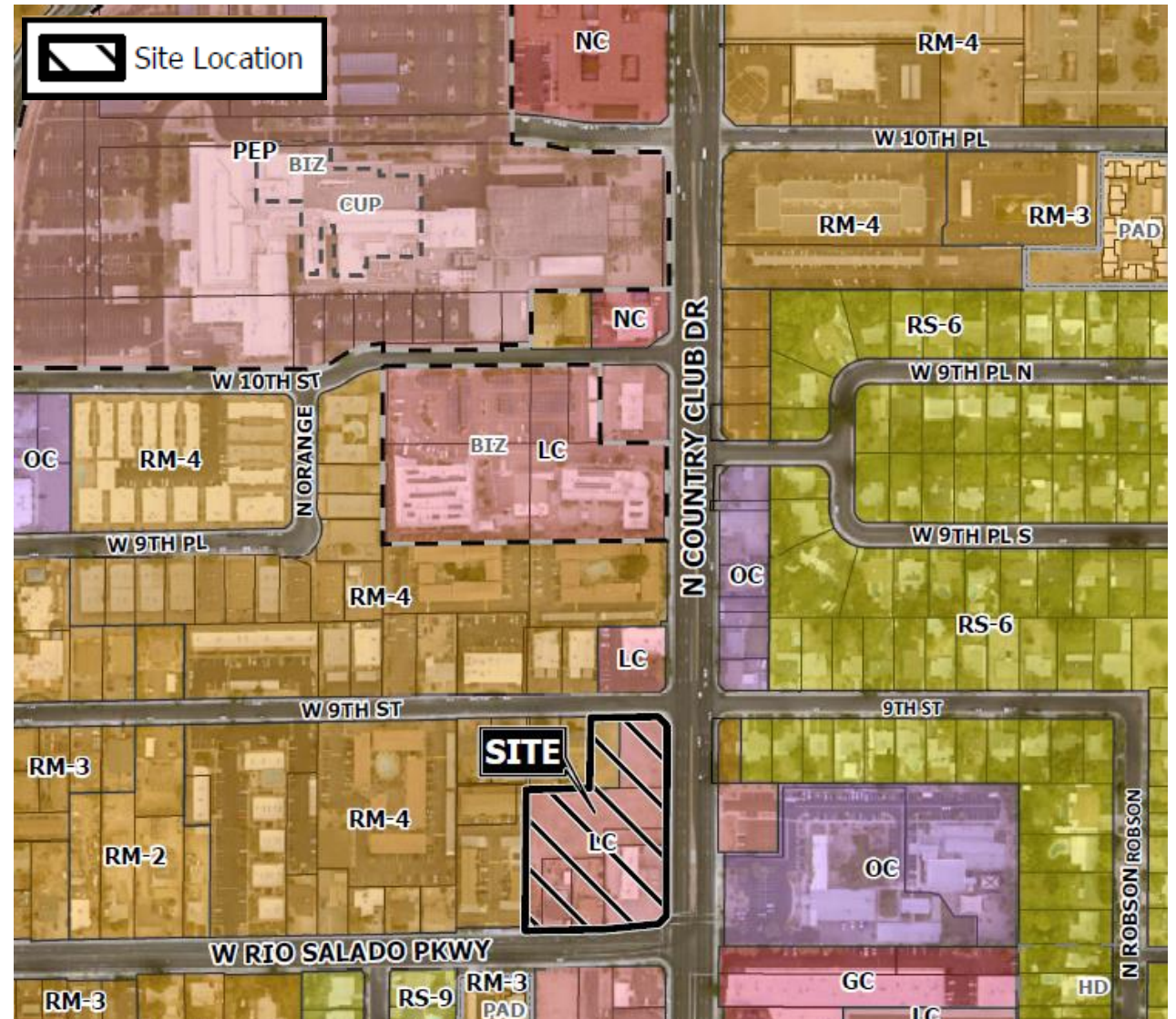
- Design Review

Purpose

- New Child Crisis Arizona headquarters campus

Location

- South of Brown Road
- West side of Country Club Drive
- North side of Rio Salado Parkway



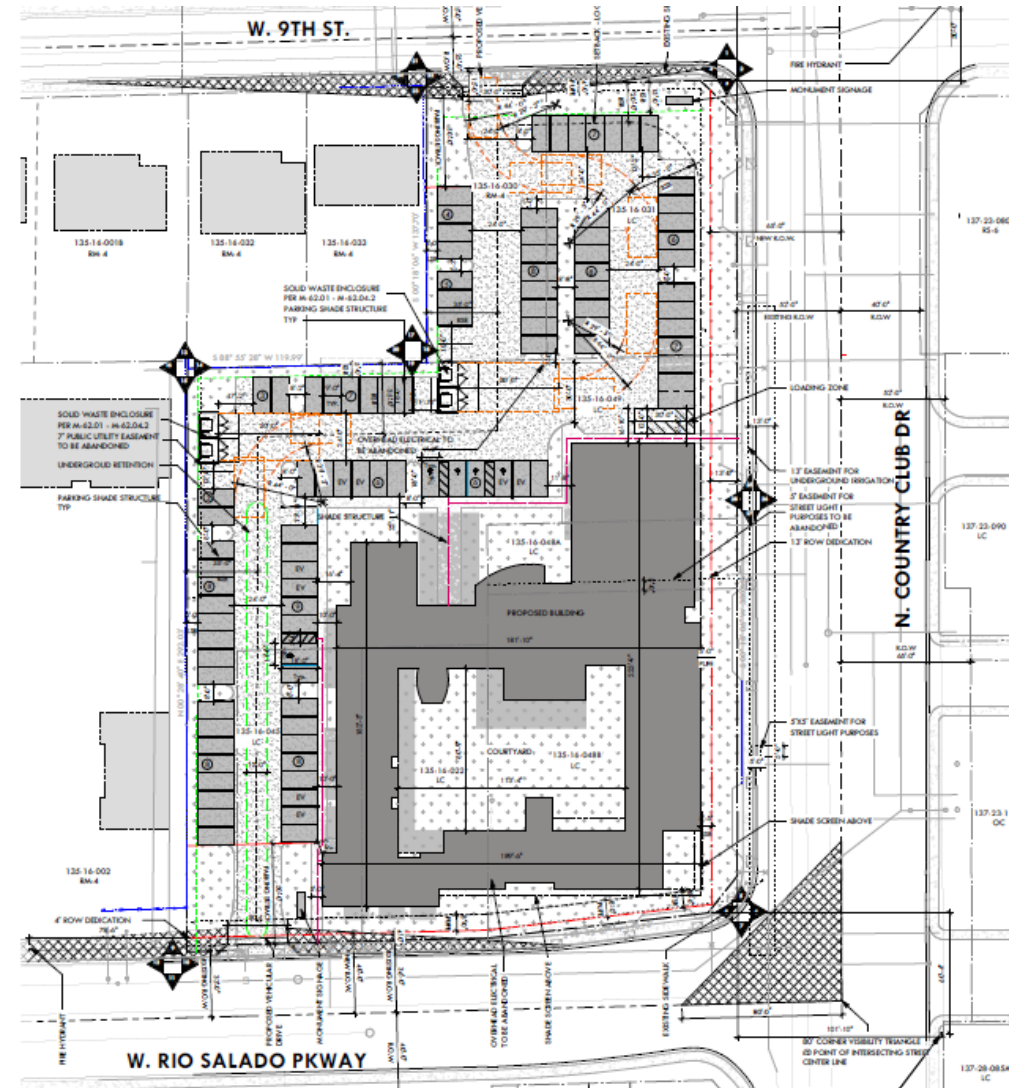
Site Photo



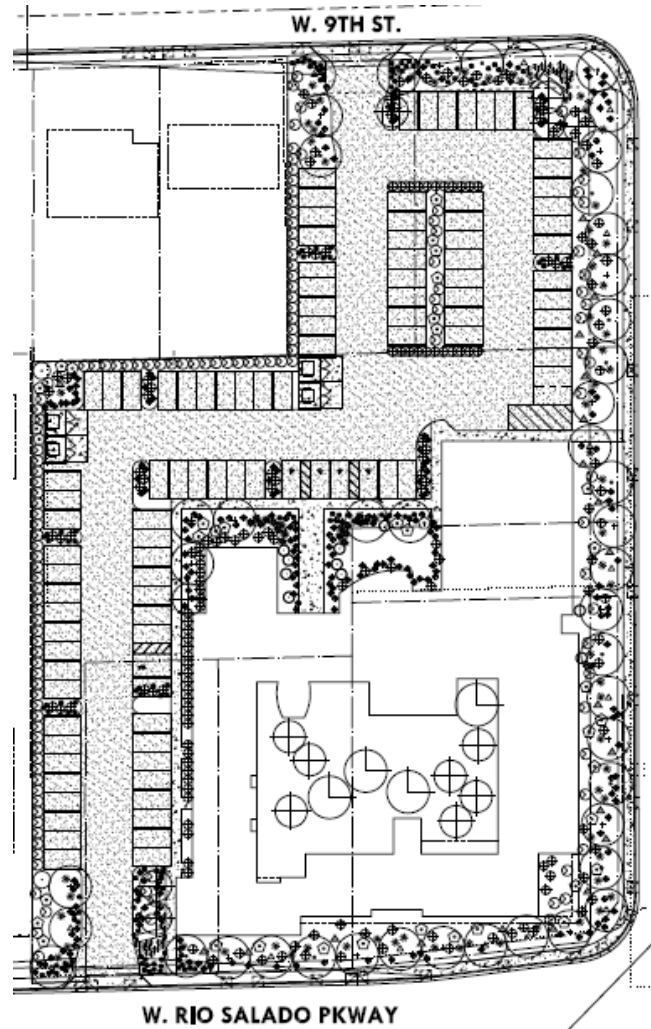
View of site from Rio Salado Parkway

Site Plan

- New 37,958 square-foot 2-story office building with interior courtyard
- Vehicle/pedestrian access from Rio Salado Pkwy, Country Club Dr and 9th St
- Building entrance on north side
- Solar parking canopies



Landscape Plan



LANDSCAPE LEGEND

Street Trees / shade trees

Celtis reticulata
netleaf hackberry
Fraxinus uhdei
shamel ash
Parkinsonia spp.
palo verde
Quercus sp.
live oak
Olneya tesota
ironwood

Size
48" box/
36" box

Patio/courtyard scaled trees

Caesalpinia mexicana
mexican bird of paradise

Size
36" box/
24" box

Existing tree to remain in place

Large Shrubs

Dodonea viscosa
hop seed
Simmondsia chinensis
jojoba
Anisacanthus quadrifidus v. wrightii
mexican fire

Size
5 gallon

Medium shrubs

Vigulera parishi (deltoldea)
goldeneye

5 gallon

Small shrubs/ ground covers

Justicia sp.
honey suckle
Wedelia texana
devil's river
Sphaeralcea ambigua
mixed globe mallow

5 gallon

Vines

Parthenocissus 'Hacienda Creeper'
hacienda creeper
Bignonia capreolata
tangerine cross vine

Size
15 gallon/
5 gallon

Cacti / Succulents

Hesperaloe sp.
red yucca
Asclepias sp.
milkweed
Euphorbia antisyphilitica
candelilla
Opuntia sp.
mixed prickly pear/ barrel cacti
Yucca rupicola/ pallida
twisted/ pale leaf yucca mix

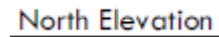
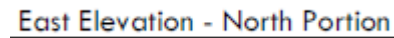
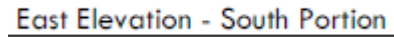
Size
5 gallon

Specimen Plants

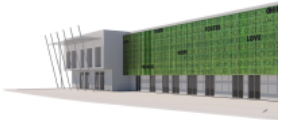
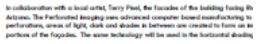
1. Lophocereus schottii
native totem pole
2. Aloe sp.
tree aloe
3. Yucca elata
soaptree yucca
4. Yucca rostrata
beaked yucca

24" box

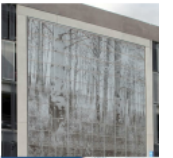
- East and North elevations



- West and South elevations



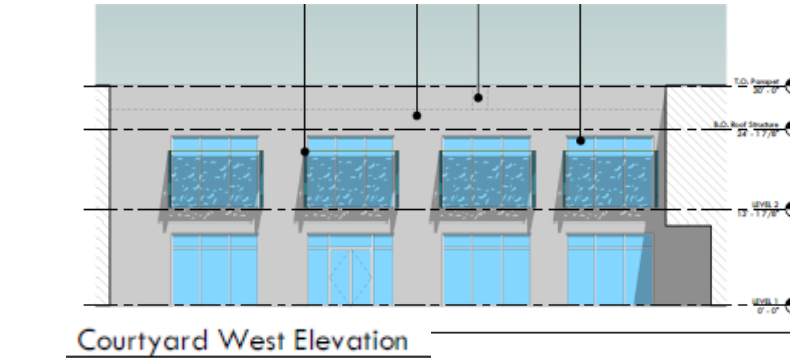
LOVE YOUTH FOSTER
 PROMISE HOPE
 PERFORATED METAL ART WALL



PERFORATED METAL ART WALL PRECEDENCE

Elevations

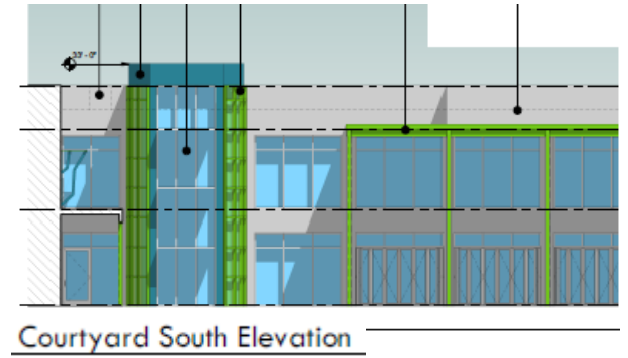
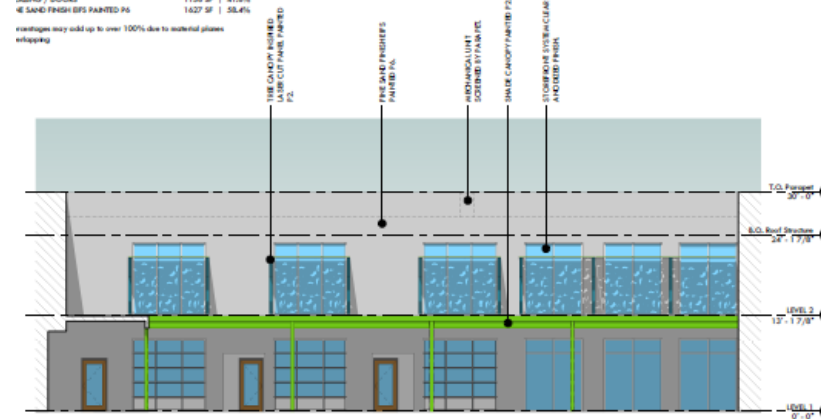
- Interior Courtyard elevations



EXTERNAL PERCENTAGES

OVERALL ELEVATION	2783 SF
GLAZING / DOORS	1156 SF 41.6%
FINE SAND FINISH EPS PAINTED P6	1627 SF 58.4%

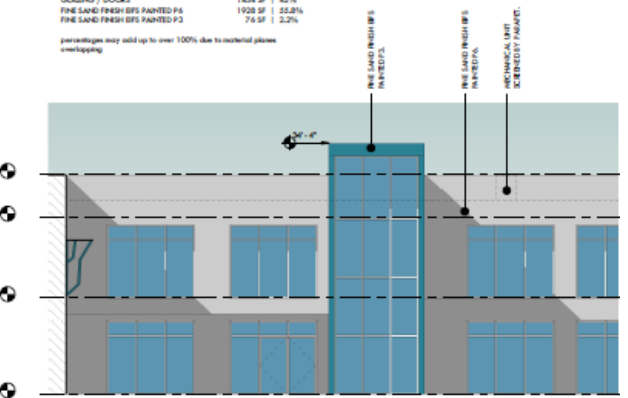
percentages may add up to over 100% due to material planes overlapping



EXTERNAL PERCENTAGES

OVERALL ELEVATION	3458 SF
GLAZING / DOORS	1454 SF 42%
FINE SAND FINISH EPS PAINTED P6	1928 SF 55.8%
FINE SAND FINISH EPS PAINTED P2	76 SF 2.2%

percentages may add up to over 100% due to material planes overlapping



Materials Board

PAINTED STEEL CANOPY FRAMING



P3 - Dunn Edwards Tropical Teal - DE5754



Opal

ATAS METAL SHE-GOLD R/OOP
(Shifting color effect metal sheen)



ACCENT COLORS - FINE TEXTURE STUCCO Flat Finish



P1 - Dunn Edwards Lime Tule - DE6124

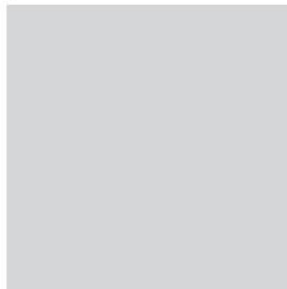


P2 - Dunn Edwards Olive - DE5559

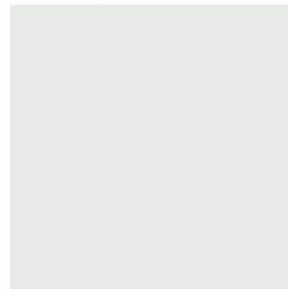


P3 - Dunn Edwards Tropical Teal - DE5754

FIELD COLORS - FINE SAND TEXTURE STUCCO Flat Finish



P6 - Dunn Edwards December Sky - DE6352



P5 - Dunn Edwards Vitrail Sky - DE6288

PERFORATED METAL ART PANELS



P2 - Dunn Edwards Olive - DE5559



P3 - Dunn Edwards Tropical Teal - DE5754

STOREFRONT



GLAZING

Guardian Glass - Sun Guard extraSelective, Ultra Clear SHX 62/27

Rendering



Lighting

LAMPION



Vaya Linear LP G2 White

Exterior ultra-compact line-voltage linear grazing luminaire with crisp white lighting

Date: _____
Type: _____
Firm Name: _____
Project: _____

Vaya Linear LP is a super slim outdoor linear luminaire for low level grazing applications, with wide 120° beam or elliptical 20° x 84° optics. Its slim form factor is ideal for space-restricted applications with limited setback or allowable install height. The robust Vaya Linear LP G2 offers a variety of color and white CCT options with static on/off control. Dynamic control options via standard 0-10V or 1-10V are available by custom order. The discreet design with integrated power supply and waterproof connectors makes wiring simple, fast and reliable.

• Compact - With its miniature size and custom-designed optics, the Linear LP is ideal for small spaces and close setback distances.
• Simple - Directly connects to 100-240 VAC input, all in one slim housing, eliminating the need for bulky external voltage power supplies and related cabling limitations, allowing for greater installation flexibility and a lean installation. Standard On-Off control or custom 0-10V/1-10V control allows for dimming and dynamic control with industry standard protocols, allowing for easy setup and 3rd party system integration.



Product page

Beam Angle:	20° x 84°, 120°	Input Voltage:	100 to 240 VAC, 50/60 Hz
Lumens per foot*	370 (e-844)	Weight:	1 kg/2.2 lb for 2 ft 2 kg/4.4 lb for 4 ft
Efficiency:	84.9 to 102.7	Housing Material:	Extruded aluminum, dark grey anodized finish
CR @ 3000 K:	82	Applications:	LA/ALA, FCC Class A, CE, PSE, ENEC, RoHS
CR @ 4000 K:	82	Environment:	Dry/Clean/Poll Location, IP66
Color Temperature†:	2800 K, 4000 K	Applications:	Wall-Grazing

Powers & Luminous Intensities

3000K	150 mA			180 mA			210 mA		
	P ₁ (W)	Φ (lm)	(lm/W)	P ₁ (W)	Φ (lm)	(lm/W)	P ₁ (W)	Φ (lm)	(lm/W)
16	21.4	2268	50	26.2	2867	110	36	3636	181
32	34.4	3576	118	48.8	5234	138	68.9	7271	306
48	53	5364	117	73.6	8801	118	103.3	12807	187

4000K	150 mA			180 mA			210 mA		
	P ₁ (W)	Φ (lm)	(lm/W)	P ₁ (W)	Φ (lm)	(lm/W)	P ₁ (W)	Φ (lm)	(lm/W)
16	21.4	2147	108	28.2	3007	130	36	3952	189
32	34.4	4294	125	48.8	6193	127	68.9	7969	114
48	53	6441	126	73.6	9198	128	103.3	12179	125

* Lumen/footpower conversion (lm/ft²) to lm/W
† Nominal CRI 80

Ordering Information

Fixture	Model	# LED	CCT (K)	Drive Current	Distribution	Line Voltage	Mounting	Fixture Color	Backlight Color
LAMP	M - (Medium)	16	3 - (3000)	55 - (350)	T1	1 - (120-277)	54.5 - (Suspended)	BLK - (Black)	B - (Blue)
	D - (Distal)	32	4 - (4000)	90 - (800)	T2	3 - (241-480)		BLU - (Blue)	B - (Blue)
		48		130 - (1000)	T3			BLU - (Blue)	G - (Green)
				170 - (1700)	T4			BLU - (Blue)	RED - (Red)
				G - (Custom)	T5			BLK - (Black)	

* For package options please contact your sales representative

* Backlight Color Options for suspended only

3000 K Specification Sheets

PDF Download	Beam angle	Lumens*	Efficiency	CR†	Power	Weight	Item number	12" WC
3000K, 120° x 84° (LA) PL-COQ20W	120°	748	84.3	82	8.8 W	1 kg/2.2 lb	358-800019-08	97-2488136118
3000K, 120° x 84° (LA) PL-L	120°	748	84.3	82	8.8 W	1 kg/2.2 lb	358-800019-08	97-2488136126
3000K, 120° x 120° (LA) PL-COQ20W	120°	1480	84.3	82	17.6 W	2 kg/4.4 lb	358-800019-02	97-2488136125
3000K, 120° x 120° (LA) PL-L	120°	1480	84.3	82	17.6 W	2 kg/4.4 lb	358-800019-02	97-2488136128
3000K, 20° x 84° (LA) PL-COQ20W	20° x 84°	896	89.8	82	8.7 W	1 kg/2.2 lb	358-800019-07	97-2488136119
3000K, 20° x 84° (LA) PL-L	20° x 84°	896	89.8	82	8.7 W	1 kg/2.2 lb	358-800019-08	97-2488136127
3000K, 20° x 84° (LA) PL-COQ20W	20° x 84°	1713	89.8	82	17.4 W	2 kg/4.4 lb	358-800019-03	97-2488136121
3000K, 20° x 84° (LA) PL-L	20° x 84°	1713	89.8	82	17.4 W	2 kg/4.4 lb	358-800019-03	97-2488136129

COLOR KINETICS
vaya series

GARDCO
by @ignify

Site & Area

Form

LED ballast



Gardco PureForm LED ballast PGL integrates a sleek, low profile design, extraordinary light output, and energy savings into an innovative pedestrian scale luminaire. PureForm ballast features a high performance optical system designed to achieve wide spacings and full cutoff performance. Three heights available for a customized look. IP66 optics ensure dust or moisture will never interfere with performance.

Product: _____
Location: _____
City: _____
State: _____
Zip: _____
Phone: _____

Ordering guide

Part	Quantity	Unit Price	Subtotal	Part	Quantity	Unit Price	Subtotal	Part	Quantity	Unit Price	Subtotal
PGL				PGL				PGL			
16	Standard Ball 16	100	100.00	32	Standard Ball 32	200	200.00	48	Standard Ball 48	300	300.00
16	Standard Ball 16	100	100.00	32	Standard Ball 32	200	200.00	48	Standard Ball 48	300	300.00
16	Standard Ball 16	100	100.00	32	Standard Ball 32	200	200.00	48	Standard Ball 48	300	300.00
16	Standard Ball 16	100	100.00	32	Standard Ball 32	200	200.00	48	Standard Ball 48	300	300.00

Part	Quantity	Unit Price	Subtotal	Part	Quantity	Unit Price	Subtotal	Part	Quantity	Unit Price	Subtotal
16	Standard Ball 16	100	100.00	32	Standard Ball 32	200	200.00	48	Standard Ball 48	300	300.00
16	Standard Ball 16	100	100.00	32	Standard Ball 32	200	200.00	48	Standard Ball 48	300	300.00
16	Standard Ball 16	100	100.00	32	Standard Ball 32	200	200.00	48	Standard Ball 48	300	300.00
16	Standard Ball 16	100	100.00	32	Standard Ball 32	200	200.00	48	Standard Ball 48	300	300.00

1. Excluded end throw body Contact fixture for ballast.
2. Not available with 120V ballast.
3. Available in 120V x 277V only.
4. Not available with 120V ballast.
5. Not available with 120V ballast.
6. Not available with 120V ballast.
7. Available in 120V only.
8. Not available with 120V ballast.
9. Not available with 120V ballast.
10. Available in 120V only.
11. Not available with 120V ballast.
12. Not available with 120V ballast.



Design Guidelines

Section 11-6-3

- | | |
|---|---|
| ✓ | Defined primary entrances |
| ✓ | Decorative concrete pedestrian paths |
| ✓ | Variety of building materials and colors |
| ✓ | Wall articulation |
| ✓ | Unique Character and Image tailored to the site and context |

Summary

Findings

Staff is seeking your review and recommendation on the following:

- ✓ Proposed building and landscape architecture



DESIGN REVIEW BOARD

May 10, 2022

[illegible][illegible]

17