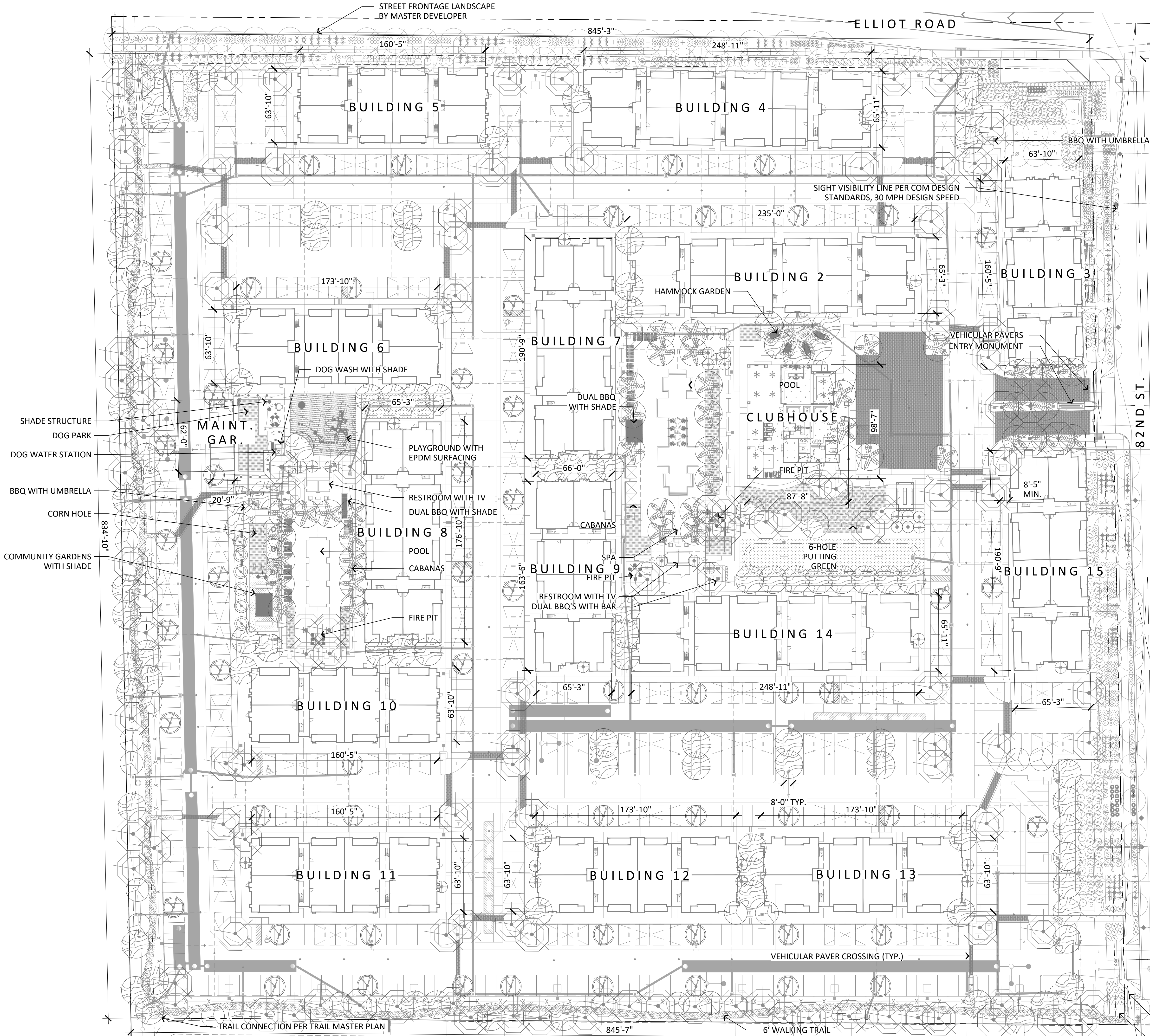


\\FSERVER\Projects\1\IDM\Acero Hawes\1\Drawings\Preliminary Site Plan\03-Planting\_AH2\_PP.dwg



PLANT MATERIALS LEGEND

Trees	Size	Qty.
Acacia aneura Mulga Acacia	24" box	58
Acacia smallii Sweet Acacia	24" box	28
Citrus sp. Naval Orange	24" box	3
Laurus nobilis Bay Laurel	24" box	6
Olneya tesota Ironwood	48" box	2
Phoenix dactylifera Date Palm	20'	41
Pistacia chinensis Chinese Pistache	24" box	106
Pistacia lentiscus Mastic Tree	24" box	36
Quercus virginiana 'Cathedral' Oak	36" box	123

Extra Large Shrubs	Size	Qty.
Caesalpinia pulcherrima		
Red Bird of Paradise	5 gal.	
Callistemon viminalis 'CV01' Slim	15 gal.	
Slim Dwarf Bottlebrush		
Dodonea viscosa	5 gal.	
Hopbush		
Tecoma alata 'Orange Jubilee'	5 gal.	
Orange Jubilee		
Tecoma x 'Bells of Fire'	5 gal.	
Bells of Fire		
Large Shrubs	Size	Qty.
Calliandra californica	5 gal.	
Red Fairy Duster		
Cassia artemesoides 'Silver'	5 gal.	
Silver Cassia		
Leucophyllum langmaniae 'Lynn's Legacy'	5 gal.	
Lynn's Legacy Sage		
Medium Shrubs	Size	Qty.
Bougainvillea Torch Glow	5 gal.	
Torch Glow Bougainvillea		
Eremophila glabra spp. carnososa	5 gal.	
Winter Blaze		
Eremophila hygrophana Blue Bells	5 gal.	
Blue Bells		
Hibiscus Rosa sinesis	5 gal.	
Shoebblackplant		
Perovskia atriplicifolia	5 gal.	
Russian Sage		
Ruellia brittoniana	5 gal.	
Ruellia		
Small Shrubs	Size	Qty.
Olea earopea	5 gal.	
Little Ollie		
Groundcovers	Size	Qty.
Eremophila prostrata	1 gal.	
Outback Sunrise Eremophila		
Lantana sp.		
'New Gold' Lantana	1 gal.	
Rosmarinus officialis 'Prostratus'	1 gal.	
Trailing Rosemary		
Setcreasea pallida	1 gal.	
Purple Heart		
Wedelia trilobata	1 gal.	
Wedelia		

Cacti/ Accents	Size	Qty.
Agave 'Blue Glow'		
Blue Glow Agave	5 gal.	
Agave bovicornuta		
Cow's Horn	5 gal.	
Agave ovatifolia		
Whale's Tongue	5 gal.	
Agave salmiana x ferox		
Large Leaf Agave	5 gal.	
Agave sisalana		
Sisal Agave	15 gal.	
Agave weberi		
Weber's Agave	24" box	
Artemisia x		
Powis Castle	5 gal.	
Bouteloua gracilis		
Blond Ambition	5 gal.	
Echinocactus grusonii		
Golden Barrel Cactus	5 gal.	
Euphorbia royleana		
Churee	5 gal.	
Hesperaloe parviflora		
'Brakelights' Red Yucca	3 gal.	
Hesperaloe sp. Pink Parade		
Pink Parade Hesperaloe	3 gal.	
Nolina bigelovii		
Beargrass	5 gal.	
Paphyercerus marginatus		
Mexican Fence Post	5 gal.	
Pedilanthus macrocarpus		
Slipper Plant	5 gal.	
Yucca pallida		
Pale Leaf Yucca	5 gal.	
Yucca rostrata		
Beaked Yucca	20 gal.	
Vines	Size	Qty.
Bougainvillea 'Barbara Karst'		
Bougainvillea	5 gal.	
Inerts		

No Symbol

Decomposed Granite 1/2" Screened, Carmel, 2" Deep

Turf- Mid-Iron Sod

1/4" Minus Decomposed Granite Carmel

Artificial Turf

E.P.D.M. Play Surface

Vehicular Pavers

1/4" Minus Decomposed Granite Apache Brown, Compacted

Concrete Header

Concrete Header Turndown

LANDSCAPE NOTES:

1. ALL QUANTITIES SHOWN ARE FOR THE LANDSCAPE ARCHITECT'S ESTIMATING AND SUBMITTAL PURPOSES ONLY AND THEREFORE ARE NOT GUARANTEED. THE CONTRACTOR SHALL CALCULATE QUANTITIES BASED ON THIS DRAWING SET AND SHALL CONTACT THE LANDSCAPE ARCHITECT WITH ANY DISCREPANCIES.

2. ALL TREE HEIGHTS AND CALIPERS SHALL COMPLY WITH THE LATEST AMENDED EDITION OF THE "ARIZONA NURSERY ASSOCIATION - RECOMMENDED TREE SPECIFICATIONS" FOR THAT TYPE AND SIZE OF TREE. SEE SECTION 1903(6)(A), ZONING CODE.

3. ALL SHRUBS LOCATED IN THE LINE-OF-SIGHT/SIGHT VISIBILITY TRIANGLES WILL BE MAINTAINED FOR A CLEAR AREA ABOVE 3'.

4. ALL BACKFLOW PREVENTERS LARGER THAN 2" SHALL BE SCREENED WITH LANDSCAPE MATERIALS LOCATED WITHIN A 6' RADIUS OF THE BACKFLOW PREVENTER. ALL BACKFLOW PREVENTERS EQUAL TO OR LESS THAN 2" SHALL BE PLACED IN A WIRE MESH BASKET AND PAINTED GREEN (CITY OF MESA HAS REQUESTED THE CHANGE TO GREEN TO DISCOURAGE THEFT.)

5. ALL LANDSCAPE MATERIAL INSTALLED SHALL BE MAINTAINED BY OWNER/OR LESSEE IN ACCORDANCE WITH THE APPROVED LANDSCAPE PLAN.

6. NO TREES ARE TO BE PLANTED WITHIN 6'-0" OF ANY WATER METER BOX PER CITY OF MESA DETAILS M-49.01, M-103.2, AND M-103.3.

SIGHT VISIBILITY LINE PER COM DESIGN STANDARDS, 30 MPH DESIGN SPEED

STREET FRONTAGE LANDSCAPE BY MASTER DEVELOPER

10'

40'

80'

120'

anderson

815 N 1st Ave  
Phoenix, AZ 85003  
602 682 6070

Client:

IDM Companies

6720 N. Scottsdale Rd. Ste. 200  
Scottsdale, AZ 85253  
602 725 1351



Acero Hawes Crossing Village 2  
FINAL LANDSCAPE  
NWC Elliot Rd  
Mesa, Arizona  
Overall Planting Plan



revisions
△
△
△
△

issued for	
design dev.	○
city submittal	●
bid package	○
construction	○

date issued 03.15.2022

scale 1:40

drawn by jc

checked by ba

project number

sheet number

L3.0



Building Planting Calculations

Building	Wall Lengths	Landscape Area Required (l.f.)	Landscape Provided (l.f.)	Trees	Required (1 per 50' of Total Wall Length)	Provided
Clubhouse	North	87.667	21.917 (25% of length)	81.667		
	East	98.583	32.532 (33% of length)	83.292		
	South	87.667	21.917 (25% of length)	79.667		
	West	98.583	32.532 (33% of length)	98.583		
	Total	372.500	108.898	343.208		14

Building 2	Wall Lengths	Landscape Area Required (l.f.)	Landscape Provided (l.f.)	Trees	Required (1 per 50' of Total Wall Length)	Provided
	North	235.000	77.550 (33% of length)	220.000		
	East	65.250	16.313 (25% of length)	65.250		
	South	235.000	77.550 (33% of length)	202.000		
	West	65.250	16.313 (25% of length)	65.250		
	Total	600.500	187.725	552.500		17

Building 3	Wall Lengths	Landscape Area Required (l.f.)	Landscape Provided (l.f.)	Trees	Required (1 per 50' of Total Wall Length)	Provided
	North*	63.833	15.958 (25% of length)	63.833		
	East*	160.417	52.938 (33% of length)	150.417		
	South	63.833	15.958 (25% of length)	63.833		
	West	160.417	52.938 (33% of length)	150.417		
	Total	448.500	137.792	428.500		28

\* Note - These calculations include street frontage landscape being designed, installed, and maintained by the Master Developer

Building 4	Wall Lengths	Landscape Area Required (l.f.)	Landscape Provided (l.f.)	Trees	Required (1 per 50' of Total Wall Length)	Provided
	North*	248.916	82.142 (33% of length)	220.000		
	East	65.916	16.479 (25% of length)	65.250		
	South	248.916	82.142 (33% of length)	181.332		
	West	65.916	16.479 (25% of length)	65.250		
	Total	629.664	197.243	531.832		26

\* Note - These calculations include street frontage landscape being designed, installed, and maintained by the Master Developer

Building 5	Wall Lengths	Landscape Area Required (l.f.)	Landscape Provided (l.f.)	Trees	Required (1 per 50' of Total Wall Length)	Provided
	North*	160.417	52.938 (33% of length)	150.417		
	East	63.833	15.958 (25% of length)	63.833		
	South	160.417	52.938 (33% of length)	150.417		
	West	63.833	15.958 (25% of length)	63.833		
	Total	448.500	137.792	428.500		9

\* Note - These calculations include street frontage landscape being designed, installed, and maintained by the Master Developer

Building 6	Wall Lengths	Landscape Area Required (l.f.)	Landscape Provided (l.f.)	Trees	Required (1 per 50' of Total Wall Length)	Provided
	North	173.833	57.365 (33% of length)	163.833		
	East	63.833	15.958 (25% of length)	63.833		
	South	173.833	57.365 (33% of length)	163.833		
	West	63.833	15.958 (25% of length)	63.833		
	Total	475.333	146.647	455.333		10

Building 7	Wall Lengths	Landscape Area Required (l.f.)	Landscape Provided (l.f.)	Trees	Required (1 per 50' of Total Wall Length)	Provided
	North	65.250	16.313 (25% of length)	46.052		
	East	176.833	58.355 (33% of length)	157.833		
	South	65.250	16.313 (25% of length)	63.833		
	West	176.833	58.355 (33% of length)	166.833		
	Total	484.167	149.335	434.552		11

Building 8	Wall Lengths	Landscape Area Required (l.f.)	Landscape Provided (l.f.)	Trees	Required (1 per 50' of Total Wall Length)	Provided
	North	65.250	16.313 (25% of length)	63.833		
	East	176.833	58.355 (33% of length)	166.833		
	South	65.250	16.313 (25% of length)	63.833		
	West	176.833	58.355 (33% of length)	154.833		
	Total	484.167	149.335	449.333		12

Building 9	Wall Lengths	Landscape Area Required (l.f.)	Landscape Provided (l.f.)	Trees	Required (1 per 50' of Total Wall Length)	Provided
	North	65.250	16.313 (25% of length)	63.833		
	East	176.833	58.355 (33% of length)	157.833		
	South	65.250	16.313 (25% of length)	46.052		
	West	176.833	58.355 (33% of length)	166.833		
	Total	484.167	149.335	434.552		10

Building 10	Wall Lengths	Landscape Area Required (l.f.)	Landscape Provided (l.f.)	Trees	Required (1 per 50' of Total Wall Length)	Provided
	North	160.417	52.938 (33% of length)	138.417		
	East	63.833	15.958 (25% of length)	63.833		
	South	160.417	52.938 (33% of length)	150.417		
	West	63.833	15.958 (25% of length)	63.833		
	Total	448.500	137.792	416.500		9

Building 11	Wall Lengths	Landscape Area Required (l.f.)	Landscape Provided (l.f.)	Trees	Required (1 per 50' of Total Wall Length)	Provided
	North	160.417	52.938 (33% of length)	150.417		
	East	63.833	15.958 (25% of length)	63.833		
	South	160.417	52.938 (33% of length)	150.417		
	West	63.833	15.958 (25% of length)	63.833		
	Total	448.500	137.792	428.500		12

Building 12	Wall Lengths	Landscape Area Required (l.f.)	Landscape Provided (l.f.)	Trees	Required (1 per 50' of Total Wall Length)	Provided
	North	173.833	57.365 (33% of length)	163.833		
	East	63.833	15.958 (25% of length)	63.833		
	South	173.833	57.365 (33% of length)	163.833		
	West	63.833	15.958 (25% of length)	63.833		
	Total	475.333	146.647	455.333		10

Building 13	Wall Lengths	Landscape Area Required (l.f.)	Landscape Provided (l.f.)	Trees	Required (1 per 50' of Total Wall Length)	Provided
	North	173.833	57.365 (33% of length)	163.833		
	East	63.833	15.958 (25% of length)	63.833		
	South	173.833	57.365 (33% of length)	163.833		
	West	63.833	15.958 (25% of length)	63.833		
	Total	475.333	146.647	455.333		10

Building 14	Wall Lengths	Landscape Area Required (l.f.)	Landscape Provided (l.f.)	Trees	Required (1 per 50' of Total Wall Length)	Provided
	North	248.916	82.142 (33% of length)	202.000		
	East	65.916	16.479 (25% of length)	65.250		
	South	248.916	82.142 (33% of length)	220.000		
	West	65.916	16.479 (25% of length)	65.250		
	Total	629.664	197.243	552.500		13

Building 15	Wall Lengths	Landscape Area Required (l.f.)	Landscape Provided (l.f.)	Trees	Required (1 per 50' of Total Wall Length)	Provided
	North	65.250	16.313 (25% of length)	63.833		
	East*	190.750	62.948 (33% of length)	166.833		
	South	65.250	16.313 (25% of length)	46.052		
	West	190.750	62.948 (33% of length)	128.160		
	Total	512.000	158.520	404.879		11

\* Note - These calculations include street frontage landscape being designed, installed, and maintained by the Master Developer

Building M	Wall Lengths	Landscape Area Required (l.f.)	Landscape Provided (l.f.)	Trees	Required (1 per 50' of Total Wall Length)	Provided
Main, Gar.	North	20.750	5.188 (25% of length)	20.750		
	East	62.000	20.460 (33% of length)	62.000		
	South	20.750	5.188 (25% of length)	15.750		
	West	62.000	0.000 (Garage Doors)	0.000		
	Total	165.500	30.835	98.500		4

LANDSCAPE NOTES:

- ALL QUANTITIES SHOWN ARE FOR THE LANDSCAPE ARCHITECT'S ESTIMATING AND SUBMITTAL PURPOSES ONLY AND THEREFORE ARE NOT GUARANTEED. THE CONTRACTOR SHALL CALCULATE QUANTITIES BASED ON THIS DRAWING SET AND SHALL CONTACT THE LANDSCAPE ARCHITECT WITH ANY DISCREPANCIES.
- ALL TREE HEIGHTS AND CALIPERS SHALL COMPLY WITH THE LATEST AMENDED EDITION OF THE "ARIZONA NURSERY ASSOCIATION - RECOMMENDED TREE SPECIFICATIONS" FOR THAT TYPE AND SIZE OF TREE. SEE SECTION 1903(6)(A), ZONING CODE.
- ALL SHRUBS LOCATED IN THE LINE-OF-SIGHT/SIGHT VISIBILITY TRIANGLES WILL BE MAINTAINED FOR A CLEAR AREA ABOVE 3'.
- ALL BACKFLOW PREVENTERS LARGER THAN 2" SHALL BE SCREENED WITH LANDSCAPE MATERIALS LOCATED WITHIN A 6' RADIUS OF THE BACKFLOW PREVENTER. ALL BACKFLOW PREVENTERS EQUAL TO OR LESS THAN 2" SHALL BE PLACED IN A WIRE MESH BASKET AND PAINTED GREEN (CITY OF MESA HAS REQUESTED THE CHANGE TO GREEN TO DISCOURAGE THEFT.)
- ALL LANDSCAPE MATERIAL INSTALLED SHALL BE MAINTAINED BY OWNER/OR LESSEE IN ACCORDANCE WITH THE APPROVED LANDSCAPE PLAN.
- NO TREES ARE TO BE PLANTED WITHIN 6'-0" OF ANY WATER METER BOX PER CITY OF MESA DETAILS M-49.01, M-103.2, AND M-103.3.

Perimeter Planting Calculations

Landscape Yard Total Length (l.f.)	Trees Required	Provided	Shrubs Required	Provided
North	845.250	34 4 Trees per 100'	*	203 24 per 100'
East	835.167	34 4 Trees per 100'	*	201 24 per 100'
South	845.583	34 4 Non-Deciduous per 100	36	170 20 per 100'
West	834.833	26 3 Non-Deciduous per 100	32	167 20 per 100'

\* Note - The street frontage landscape is being designed, installed, and maintained by the Master Developer and not a part of this project  
\*\* Data is extrapolated based on the typical planting design shown on this sheet. Final shrub planting design and quantities will be shown on the final Construction Documents and will meet or exceed this number.

Tree Size Calculations

Tree Size Required per Area	Trees Required	Provided
Building Foundation	158	242
36" Box	16 10%	49 20.25%
24" box	142 90%	193 79.75%

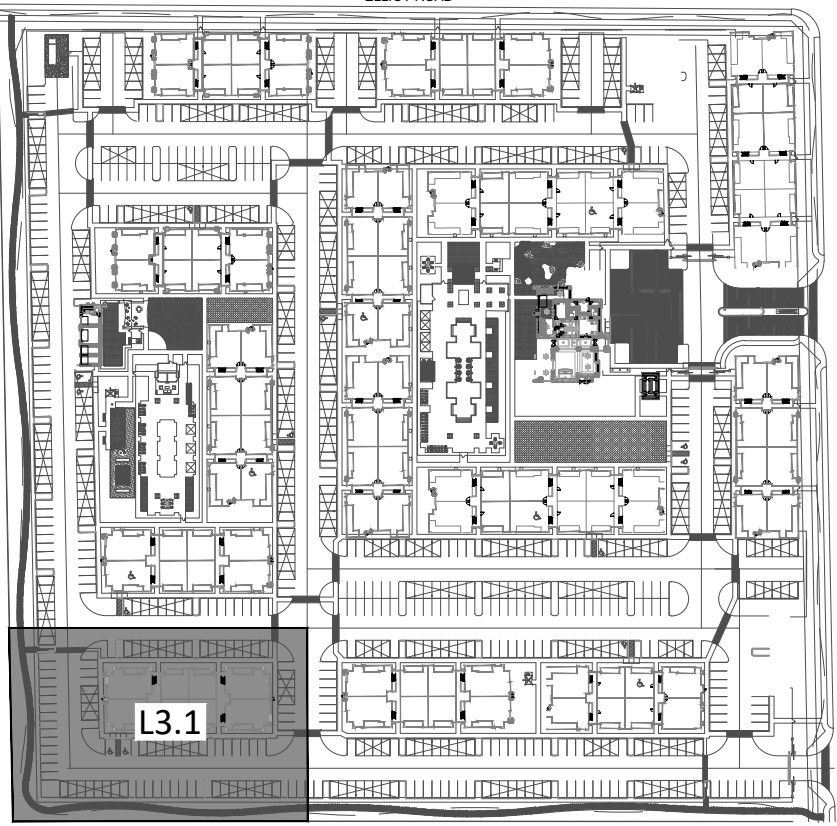
\* Note - These calculations include street frontage landscape being designed, installed, and maintained by the Master Developer, for the purposes of these calculatoins, 24" box has been used for these trees.

Tree Size Required per Area	Trees Required	Provided
Landscape yard	60	68
36" Box	15 25%	46 67.65%
24" box	30 50%	22 32.35%
15 gallon	15 25%	0

\* Note - The street frontage landscape is being designed, installed, and maintained by the Master Developer and not a part of this project

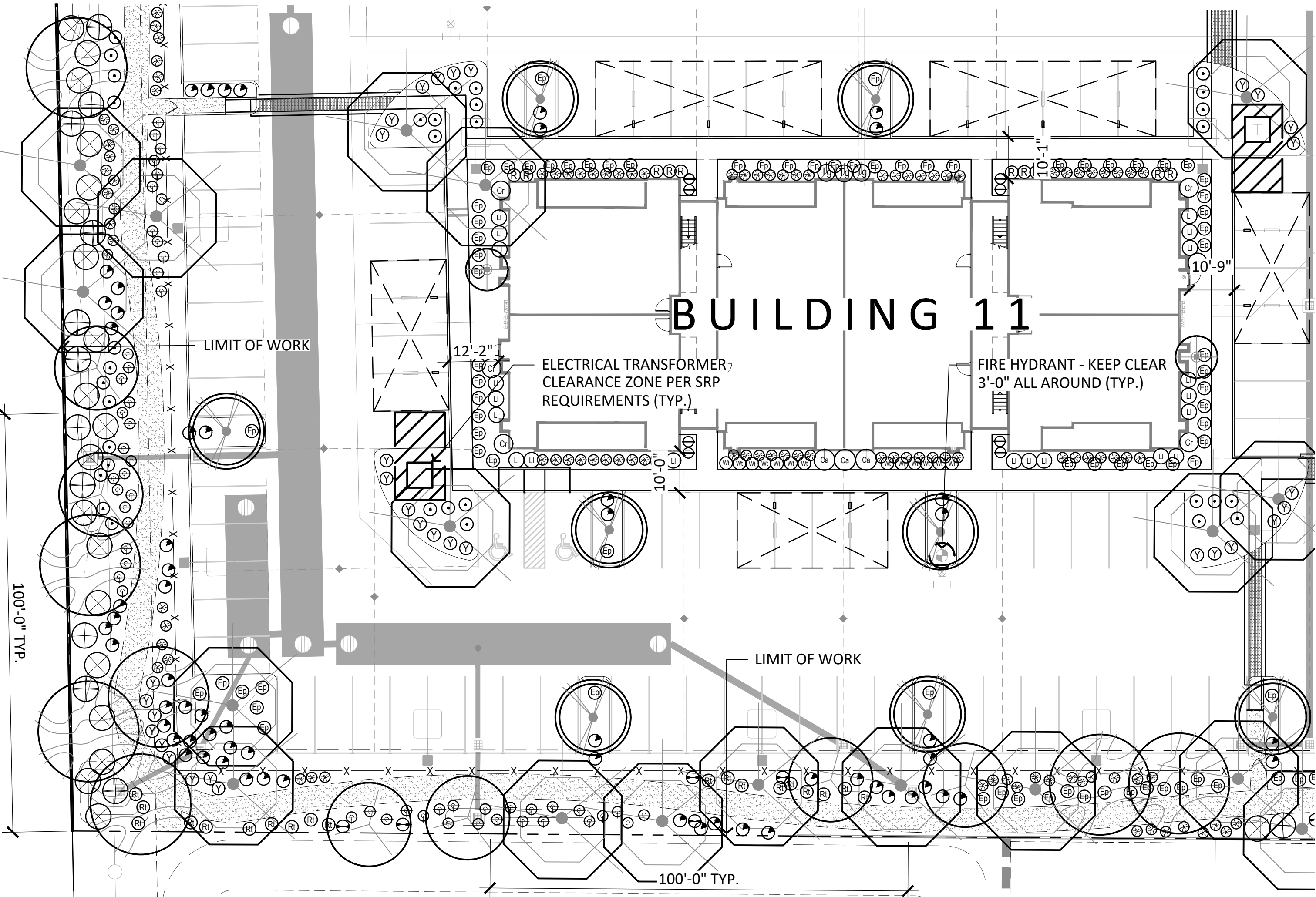
PLANT MATERIALS LEGEND

Trees	Size	Qty.	Extra Large Shrubs	Size	Qty.	Cacti/ Accents	Size	Qty.
Acacia aneura Mulga Acacia	24" box	58	Caesalpinia pulcherrima Red Bird of Paradise	5 gal.		Agave 'Blue Glow' Blue Glow Agave	5 gal.	
Acacia smallii Sweet Acacia	24" box	28	Callistemon viminalis 'CV01' Slim Slim Dwarf Bottlebrush	15 gal.		Agave bisovicornuta Cow's Horn	5 gal.	
Citrus sp. Naval Orange	24" box	3	Dodonaea viscosa Hopbush	5 gal.		Agave ovatifolia Whale's Tongue	5 gal.	
Laurus nobilis Bay Laurel	24" box	6	Tecoma alata 'Orange Jubilee' Orange Jubilee	5 gal.		Agave salmiana x ferox Large Leaf Agave	5 gal.	
Olneya tesota Ironwood	48" box	2	Tecoma x 'Bells of Fire' Bells of Fire	5 gal.		Agave sisalana Sisal Agave	15 gal.	
Phoenix dactylifera Date Palm	20'	41	Large Shrubs Calliandra californica	Size Qty.		Agave weberi Weber's Agave	24" box	
Pistacia chinensis Chinese Pistache	24" box	106	Red Fairy Duster Cassia artemesoides 'Silver'	5 gal.		Artemisia x Powis Castle	5 gal	
Pistacia lentiscus Mastic Tree	24" box	36	Silver Cassia Leucophyllum langmaniae 'Lynn's Legacy'	5 gal.		Bouteloua gracilis Blond Ambition	5 gal	
Quercus virginiana 'Cathedral' Oak	36" box	123	Lynn's Legacy Sage Medium Shrubs	Size Qty.		Echinocactus grusonii Golden Barrel Cactus	5 gal	
			Bougainvillea Torch Glow Torch Glow Bougainvillea	5 gal.		Euphorbia royleana Churee	5 gal	
			Eremophila glabra spp. carnosa Winter Blaze	5 gal.		Hesperaloe parviflora 'Brakelights' Red Yucca	3 gal.	
			Blue Bells Hibiscus Rosa sinesis	5 gal.		Hesperaloe sp. Pink Parade Pink Parade Hesperaloe	3 gal.	
			Shoeblackplant Perovskia atriplicifolia	5 gal.		Nolina bigelovii Beargrass	5 gal.	
			Russian Sage Ruella brittoniana	5 gal.		Paphycereus marginatus Mexican Fence Post	5 gal.	
			Small Shrubs Olea europaea	Size Qty.		Pedilanthus macrocarpus Slipper Plant	5 gal.	
			Little Ollie Groundcovers	Size Qty.		Yucca pallida Pale Leaf Yucca	5 gal	
			Eremophila prostrata Outback Sunrise Eremophila	1 gal		Yucca rostrata Beaked Yucca	20 gal.	
			Lantana sp. 'New Gold' Lantana	1 gal.		Vines Bougainvillea 'Barbara Karst'	Size Qty.	
			Trailing Rosemary Setcreasea pallida	1 gal.		Bougainvillea Inerts	5 gal	
			Purple Heart Wedelia trilobata	1 gal.		Decomposed Granite 1/2" Screened, Carmel, 2" Deep	157,128	
			Wedelia	1 gal.		Turf- Mid-Iron Sod	6,939	
						1/4" Minus Decomposed Granite Carmel		
						Artificial Turf		
						E.P.D.M. Play Surface		
						Vehicular Pavers		
						1/4" Minus Decomposed Granite Apache Brown, Compacted		
						Concrete Header		
						Concrete Header Turndown		



Key Map

Not To Scale



TYPICAL BUILDING, PARKING, AND PERIMETER PLANTING



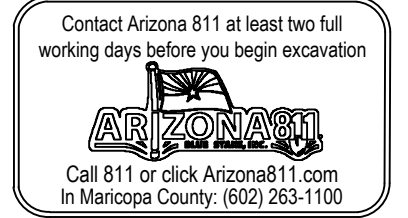
anderson

815 N 1st Ave  
Phoenix, AZ 85003  
602 682 6070

Client:

IDM Companies

6720 N. Scottsdale Rd. Ste. 200  
Scottsdale, AZ 85253  
602 725 1351



Contact Arizona 811 at least two full working days before you begin excavation  
Call 811 or click Arizona811.com  
In Maricopa County: (602) 263-1100  
© copyright 2022 anderson design company, llc

Acero Hawes Crossing Village 2  
FINAL LANDSCAPE PLAN  
NWC Elliot Rd  
Mesa, Arizona  
Typical Planting Plan



revisions	
issued for	design dev. <input type="radio"/>
	city submittal <input checked="" type="radio"/>
	bid package <input type="radio"/>
	construction <input type="radio"/>
date issued	03.15.2022
scale	1/20
drawn by	jc
checked by	ba
project number	
sheet number	

L3.1