

P1

TILT-UP CONCRETE WALL PANEL
WALL PANEL FIELD COLOR
SHERWIN WILLIAMS - #7626 - ZURICH WHITE

P2

TILT-UP CONCRETE WALL PANEL
WALL PANEL FIELD COLOR
SHERWIN WILLIAMS - #7065 - ARGOS

P3

TILT-UP CONCRETE WALL PANEL
WALL PANEL ACCENT COLOR
SHERWIN WILLIAMS - #7075 - WEB GRAY

P4

TILT-UP CONCRETE WALL PANEL
WALL PANEL ACCENT COLOR
CAPROCK RED

P5

TILT-UP CONCRETE WALL PANEL
WALL PANEL ACCENT COLOR
WHITE

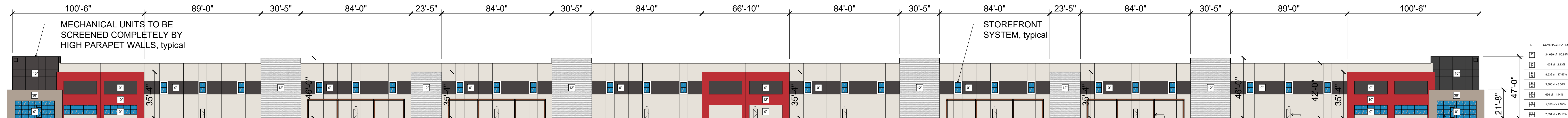
G1

1" INSULATED DUAL PANE MEDIUM PERFORMANCE
PPG VISTACOL PACIFICA GLAZING
CLEAR ANODIZED ALUMINUM MULLIONS

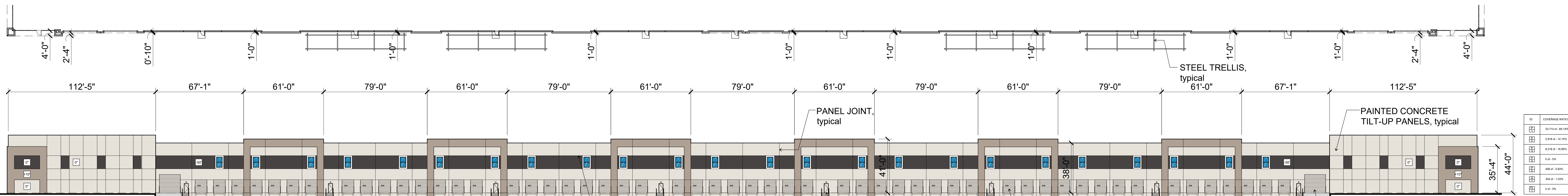
FL1

FORM LINER

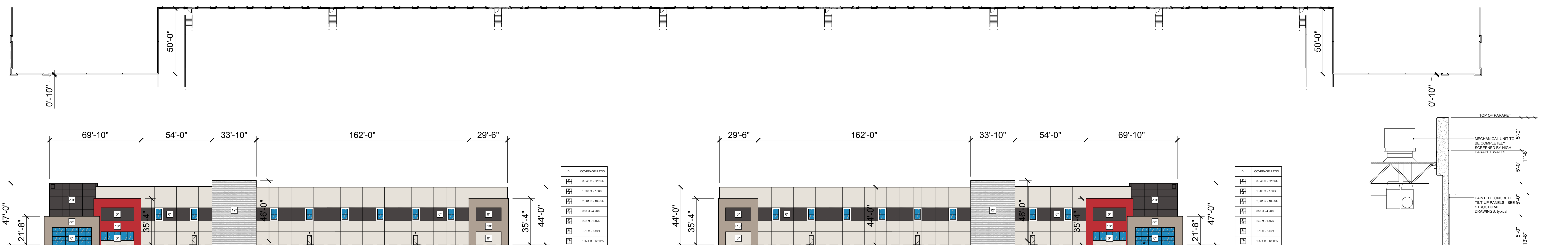
LEGEND



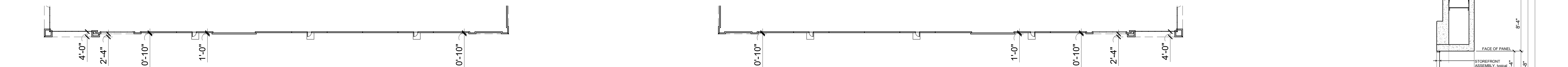
1. NORTH ELEVATION



2. SOUTH ELEVATION



3. WEST ELEVATION



SECTION

Building A Exterior Elevations

14 April 2022

Pecos and Merrill
Phoenix, Arizona

