

PROJECT DATA

Proposed Zoning:	LI-PAD
APN#:	313-25-859N
Net Site Area: (Including Drainage Channel)	1,957,918 S.F. (44.9AC.)
Total Building Area:	645,470 S.F.
Building Coverage:	33%
Lot Coverage: (Impervious Surfaces)	79.5%
Common Open Space Required:	
BLDG A. 265,911 SF @ 1%:	2,659 S.F.
BLDG B. 379,559 S.F. @ 1%:	3,796 S.F.
Total Open Space Required:	6,455 S.F.
Open Space Provided:	7,048 S.F.
Building A	
Site Area:	793,122 S.F. (18.2 AC.)
Building Area:	265,911 S.F.
Parking Required	
Office (22,600 S.F.) @ 1/375 S.F.:	60 Spaces
Warehouse (243,311 S.F.) @ 1/900 S.F.:	270 Spaces
Total Parking Required:	330 Spaces
Parking Provided:	337 Spaces
ADA Parking Required:	8 Spaces
ADA Parking Provided:	8 Spaces
Building B	
Site Area:	1,164,794 S.F. (26.7 AC.)
Building Area:	379,559 S.F.
Parking Required	
Office (17,600 S.F.) @ 1/375 S.F.:	47 Spaces
Warehouse (361,959 S.F.) @ 1/900 S.F.:	402 Spaces
Total Bldg,B Parking Required:	449 Spaces
Bldg. B Parking Provided:	316 Spaces
ADA Parking Required:	8 Spaces
ADA Parking Provided:	8 Spaces

Total Parking Required:	779 Spaces
Parking Provided:	653 Spaces
Total ADA Parking Required:	16 Spaces
Total ADA Parking Provided:	16 Spaces
Max Building Height Allowed:	40' Max.
Proposed Building Height:	46'-6" Max.

LANDSCAPE LEGEND

ALL TREES TO MEET OR EXCEED A.N.A. SPECIFICATIONS (U.O.N. - UNLESS OTHERWISE NOTED) (In trade marked Mountain States Nursery)

TREES AND PALMS	SIZE	QTY
Acacia aneura Mulga Tree	24" Box UON 36" Box	120 29
Nerium oleander 'Tree Form' White Oleander Tree	36" Box Multi Trunk	29
Parkinsonia hybrid Desert Museum	24" Box Low Breaking Standards	90
Chilopsis linearis 'Bubba' Desert Willow 'Bubba'	15 Gallon Multi Trunk	30
Prosopis velutina Native Mesquite	15 Gallon Multi Trunk	39
Prosopis alba hybrid Copper's Thornless Mesquite	24" Box Multi Trunk	115
Quercus virginiana 'Heritage' Heritage Live Oak	36" Box U.O.N. 48" Box	45 38
Caesalpinia mexicana Mexican Bird of Paradise	15 Gallon Multi Trunk	45

SHRUBS / ACCENTS

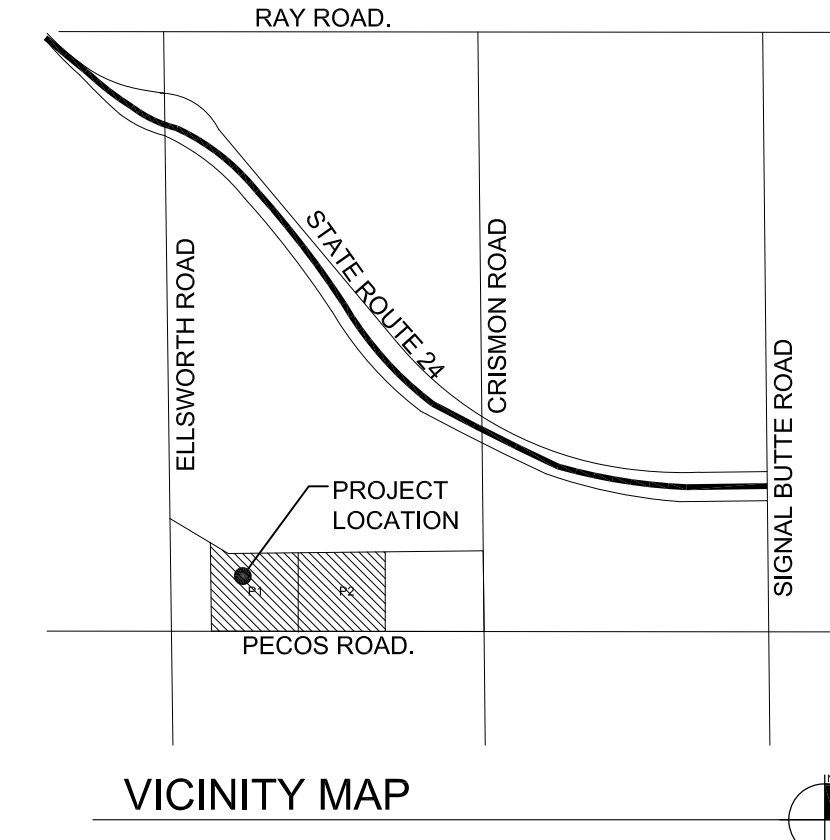
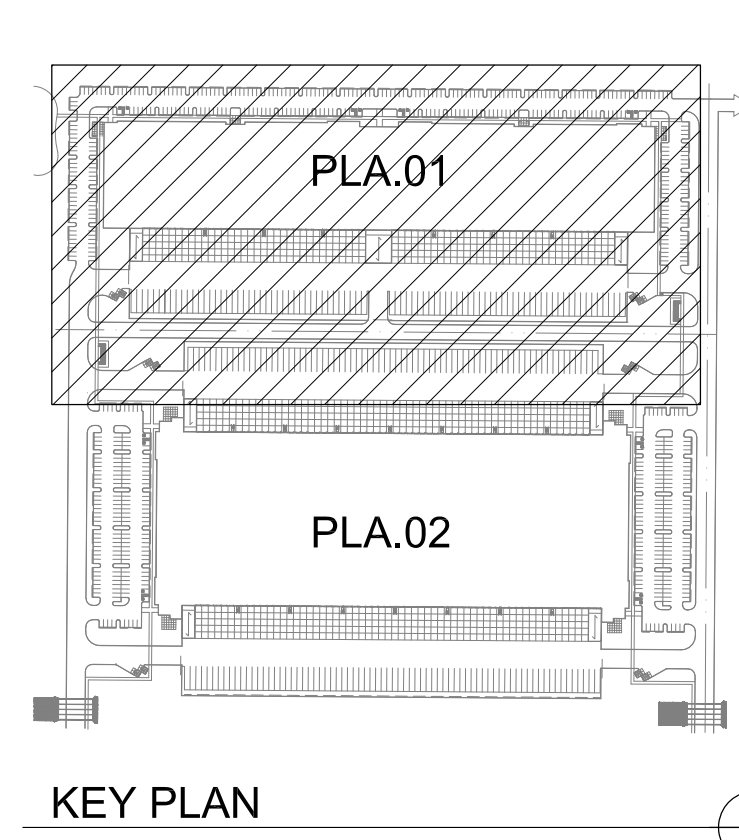
	SIZE	QTY
Caesalpinia gilliesii tm Yellow Bird of Paradise	5 Gallon	193
Hesperaloe parviflora 'Desert Dusk' Desert Dusk Yucca tm	5 Gallon	1526
Agave murphyi Murphy's Agave	5 Gallon	497
Hesperaloe funifera Giant Hesperaloe	5 Gallon	467
Eremophila hygrophana Blue Bell Emu	5 Gallon	450
Nolina texana Bear Grass	5 Gallon	156
Hesperaloe parviflora 'Yellow' Yellow Yucca	5 Gallon	938
Hesperaloe parviflora 'Perpa' Brakelight Red Yucca tm	5 Gallon	801
Bougainvillea 'Torch Glow' Torch Glow Bougainvillea	5 Gallon	271
Mulenbergia rigens Deer Grass	5 Gallon	632
Tecoma 'Orange Jubilee' Orange Jubilee	5 Gallon	1092
Leucophyllum 'Heavenly Cloud' Heavenly Cloud Sage	5 Gallon	30
Dodonaea viscosa Green Hopseed Bush	5 Gallon	146

GROUNDCOVERS

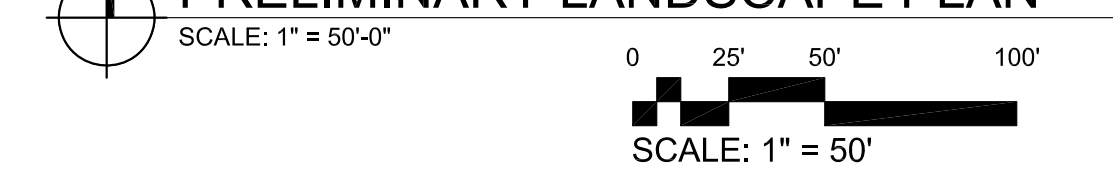
	SIZE	QTY
Sod - Mid - Iron Hybrid Bermuda		
Eremophila glabra 'Mingnew Gold' Outback Sunrise Emu	1 Gallon	336
Lantana x Dallas Red Red Lantana	1 Gallon	277
Decomposed Granite 3/4" Screened Rock Pros Rose 2" min thickness in all landscape areas		
Grouted Rip-Rap 3" - 6" Rock Pros Rose 6" min thickness in all indicated areas, 80% visible rock required		
Decomposed Granite 1/2" Minus Rock Pros Rose 2" min thickness in all noted landscape areas		
Non Grouted Rip-Rap 1"-3" Screened Rock Pros Rose 6" min thickness in all indicated areas		
3/16" x 6" Steel Metal Header / Secure Every 48" with M8 Stake		
4"x6" Concrete Header		
Decomposed Granite 1" Screened Rock Pros Rose 2" min thickness in all noted landscape areas		

SUBMIT SAMPLES OF ALL INERT MATERIAL TO LA FOR APPROVAL

MATCHLINE SEE SHEET PLA.02



PRELIMINARY LANDSCAPE PLAN



GENERAL BUILDING FOUNDATION / IRRIGATION NOTES:

POSITIVE DRAINAGE NEEDS TO BE MAINTAINED FROM THE BUILDINGS EXTERIOR WALLS FOR A MINIMUM OF 10'. NO IRRIGATED LANDSCAPE MATERIALS WITHIN THE FIRST 3' NEXT TO THE BUILDING FOUNDATION. WITHIN 3'-5' OF THE BUILDING FOUNDATION ONLY LANDSCAPE MATERIALS THAT CAN BE IRRIGATED WITH A 1 GPH EMITTER ARE ALLOWED. ANY LANDSCAPE MATERIALS REQUIRING AN EMITTER GREATER THAN 1GPH, INCLUDING TURF SHALL BE A MINIMUM OF 5' FROM THE OUTSIDE FACE OF THE BUILDING FOUNDATION. ALL IRRIGATION LINES, OTHER THAN THOSE SUPPLYING INDIVIDUAL EMITTERS SHALL NOT BE PLACED WITHIN 5' OF THE BUILDING FOUNDATION.

LEGACY BUSINESS PARK
Crismon Road & Pecos Road
Mesa, Arizona



LASKIN & ASSOCIATES, INC.
LANDSCAPE ARCHITECTS
67 E. Weldon Ave.
Suite 230
Phoenix, Arizona 85012
p (602) 840-7771
f (602) 840-8021
www.laskinlandscape.com



Butler Design Group, Inc
architects & planners

PLA.01
OF 3

LANDSCAPE LEGEND

ALL TREES TO MEET OR EXCEED A.N.A. SPECIFICATIONS (U.O.N. - UNLESS OTHERWISE NOTED)

(tm trade marked Mountain States Nursery)

TREES and PALMS	SIZE	QTY
Acacia aneura	24" Box UON	120
Mulga Tree	36" Box	29
Nerium oleander 'Tree Form'	36" Box	29
White Oleander Tree	Multi Trunk	
Parkinsonia hybrid	24" Box	90
Desert Museum	Low Breaking Standards	
Chilopsis linearis 'Bubba'	15 Gallon	30
Desert Willow 'Bubba'	Multi Trunk	
Prosopis velutina	15 Gallon	39
Native Mesquite	Multi Trunk	
Prosopis alba hybrid	24" Box	115
Copper's Thornless Mesquite	Multi Trunk	
Quercus virginiana "Heritage"	36" Box U.O.N.	45
Heritage Live Oak	48" Box	38
Caesalpinia mexicana	15 Gallon	45
Mexican Bird of Paradise	Multi Trunk	

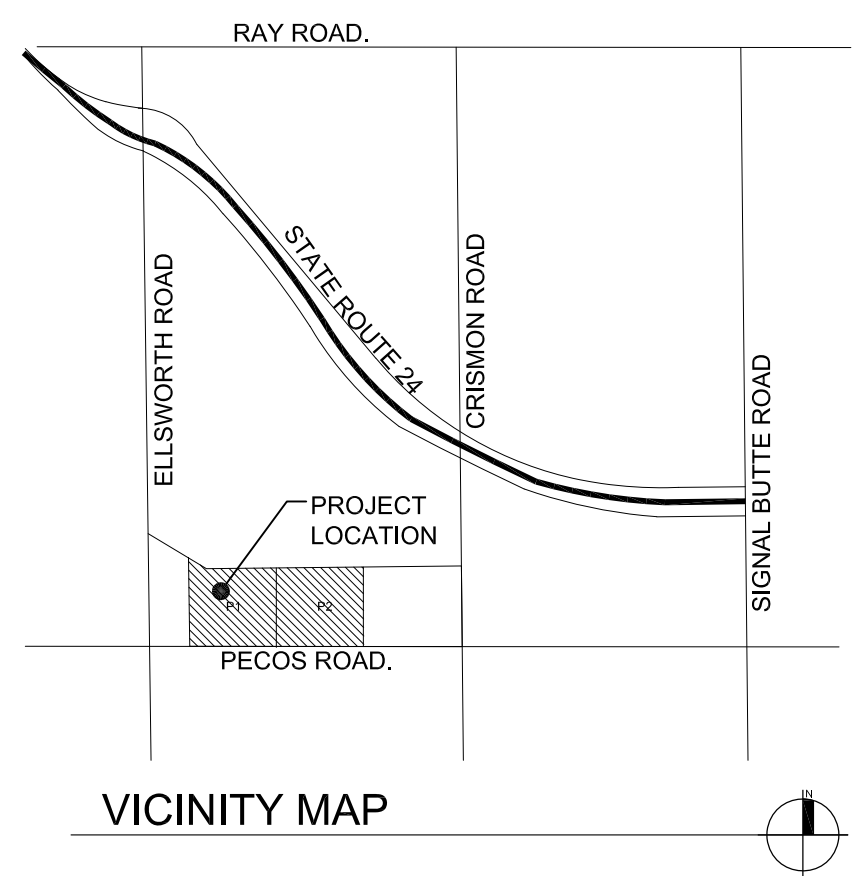
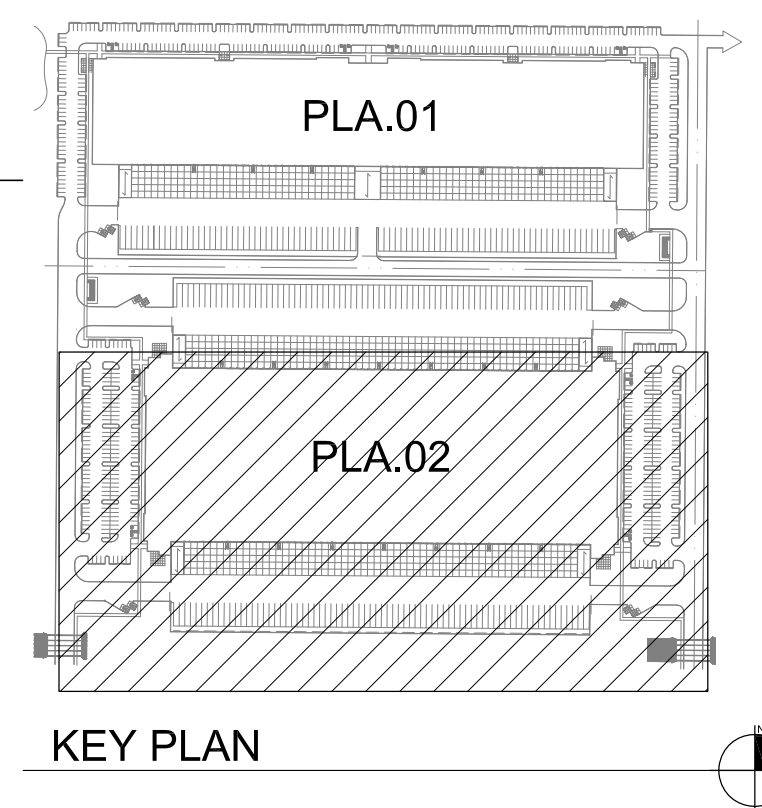
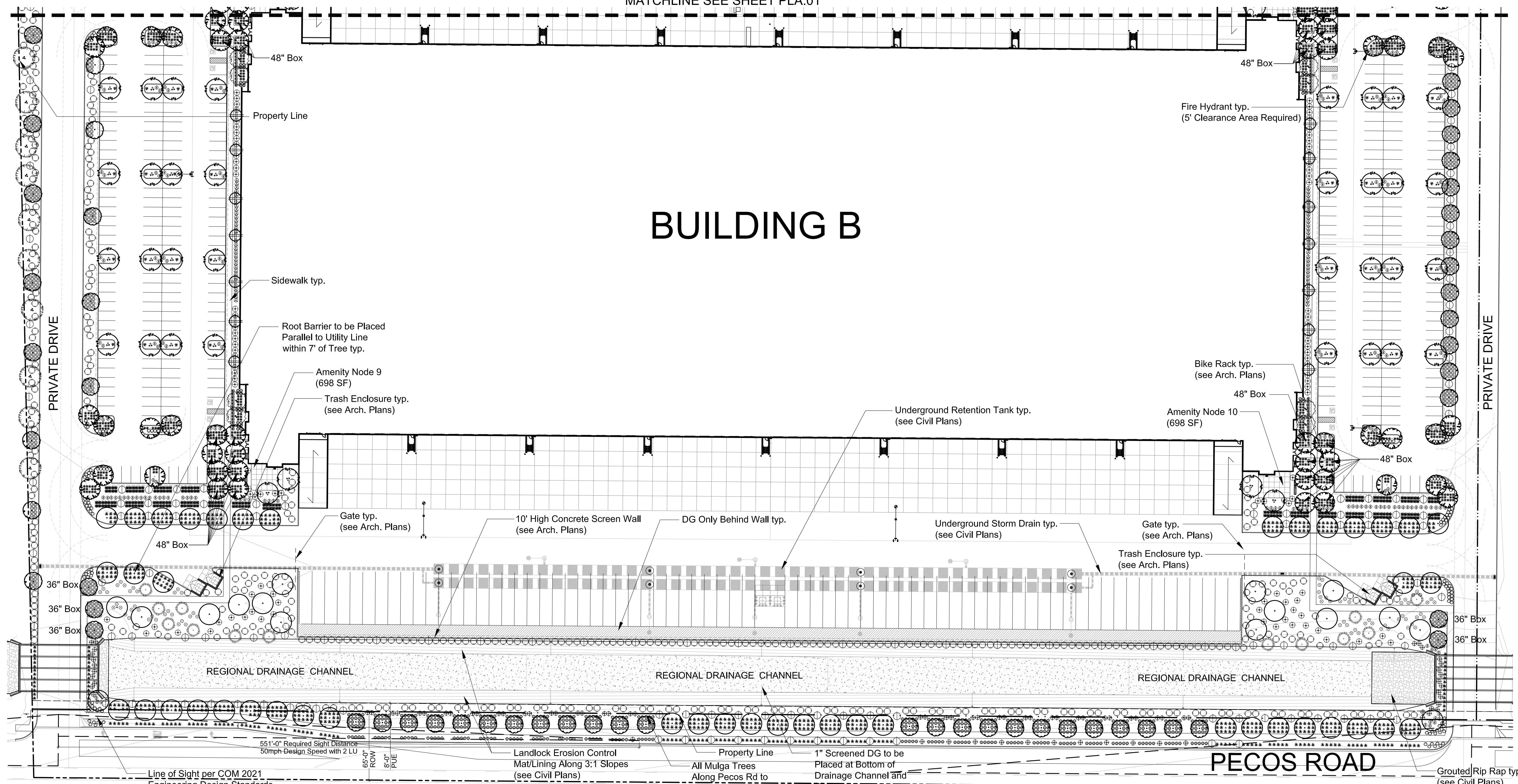
SHRUBS / ACCENTS	SIZE	QTY
Caesalpinia gilleslii tm	5 Gallon	193
Yellow Bird of Paradise		
Hesperaloe parviflora 'Desert Dusk'	5 Gallon	1526
Desert Dusk Yucca tm		
Agave murphyi	5 Gallon	497
Murphy's Agave		
Hesperaloe funifera	5 Gallon	467
Giant Hesperaloe		
Eremophila hygrophana	5 Gallon	450
Blue Bell Emu		
Nolina texana	5 Gallon	156
Bear Grass		
Hesperaloe parviflora 'Yellow'	5 Gallon	938
Yellow Yucca		
Hesperaloe parviflora 'Perpa'	5 Gallon	801
Brakelight Red Yucca tm		
Bougainvillea 'Torch Glow'	5 Gallon	271
Torch Glow Bougainvillea		
Mulenbergia rigens	5 Gallon	632
Deer Grass		
Tecoma "Orange Jubilee"	5 Gallon	1092
Orange Jubilee		
Leucophyllum 'Heavenly Cloud'	5 Gallon	30
Heavenly Cloud Sage		
Dodonaea viscosa	5 Gallon	146
Green Hopseed Bush		

GROUNDCOVERS	SIZE	QTY
Sod - Mid - Iron Hybrid Bermuda		
Eremophila glabra "Mingnew Gold"	1 Gallon	336
Outback Sunrise Emu		
Lantana x Dallas Red	1 Gallon	277
Red Lantana		
Decomposed Granite 3/4" Screened Rock Pros Rose		
2" min thickness in all landscape areas		
Grouted Rip-Rap 3" - 6" Rock Pros Rose		
6" min thickness in all indicated areas, 80% visible rock required		
Decomposed Granite 1/2" Minus Rock Pros Rose		
2" min thickness in all noted landscape areas		
Non Grouted Rip-Rap 1"-3" Screened Rock Pros Rose		
6" min thickness in all indicated areas		
3/16" x 6" Steel Metal Header / Secure Every 48" with Mt Stake		
4"x6" Concrete Header		
Decomposed Granite 1" Screened Rock Pros Rose		
2" min thickness in all noted landscape areas		

SUBMIT SAMPLES OF ALL INERT MATERIAL TO LA FOR APPROVAL

GENERAL BUILDING FOUNDATION / IRRIGATION NOTES:

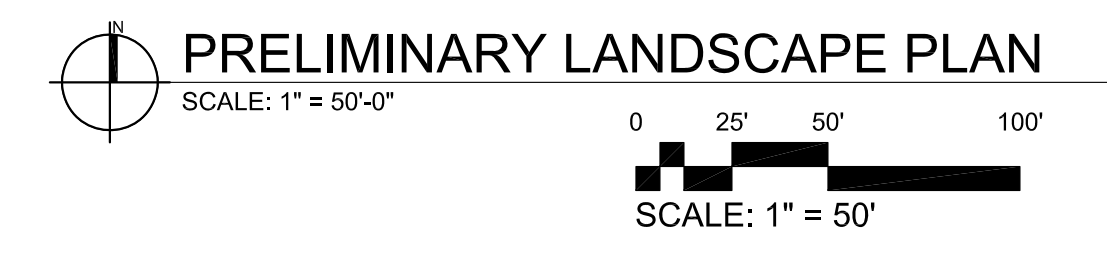
POSITIVE DRAINAGE NEEDS TO BE MAINTAINED FROM THE BUILDINGS EXTERIOR WALLS FOR A MINIMUM OF 10'. NO IRRIGATED LANDSCAPE MATERIALS WITHIN THE FIRST 3' NEXT TO THE BUILDING FOUNDATION. WITHIN 3'-5' OF THE BUILDING FOUNDATION ONLY LANDSCAPE MATERIALS THAT CAN BE IRRIGATED WITH A 1 GPH EMITTER ARE ALLOWED. ANY LANDSCAPE MATERIALS REQUIRING AN EMITTER GREATER THAN 1GPH, INCLUDING TURF SHALL BE A MINIMUM OF 5' FROM THE OUTSIDE FACE OF THE BUILDING FOUNDATION. ALL IRRIGATION LINES, OTHER THAN THOSE SUPPLYING INDIVIDUAL EMITTERS SHALL NOT BE PLACED WITHIN 5' OF THE BUILDING FOUNDATION.



SHADE COVERAGE CALCULATIONS

TOTAL SIDEWALK SF FOR ENTIRE SITE: 34,961 SF
 TOTAL TREES ADJACENT TO SIDEWALK ROUTE: 245

TREE BREAKDOWN:	TOTAL SF OF TREE CANOPIES AT MATURITY:
ACACIA ANEURA	
- 15' DIAMETER CANOPY AT MATURITY (177 SF)	
- TOTAL: 31	
NERIUM OLEANDER 'TREE FORM'	
- 15' DIAMETER CANOPY AT MATURITY (177 SF)	
- TOTAL: 27	
PARKINSONIA HYBRID	
- 20' DIAMETER CANOPY AT MATURITY (314 SF)	
- TOTAL: 30	
CHILOPSIS LINEARIS 'BUBBA'	
- 15' DIAMETER CANOPY AT MATURITY (177 SF)	
- TOTAL: 05	
PROSOPIS ALBA HYBRID	
- 20' DIAMETER CANOPY AT MATURITY (314 SF)	
- TOTAL: 53	
QUERCUS VIRGINIANA 'HERITAGE'	
- 25' DIAMETER CANOPY AT MATURITY (419 SF)	
- TOTAL: 54	
CAESALPINIA MEXICANA	
- 10' DIAMETER CANOPY AT MATURITY (79 SF)	
- TOTAL: 45	
TOTAL SF OF TREE CANOPIES AT MATURITY: 67,282 SF	
ASSUMING 33% OF TREE CANOPY SF WILL SHADE SIDEWALK	
TOTAL NUMBER OF TREES WILL SHADE 22,203 SF OF SIDEWALK	
34,961 SF OF SIDEWALK / 22,203 SF OF SHADE: 63.5% COVERAGE	



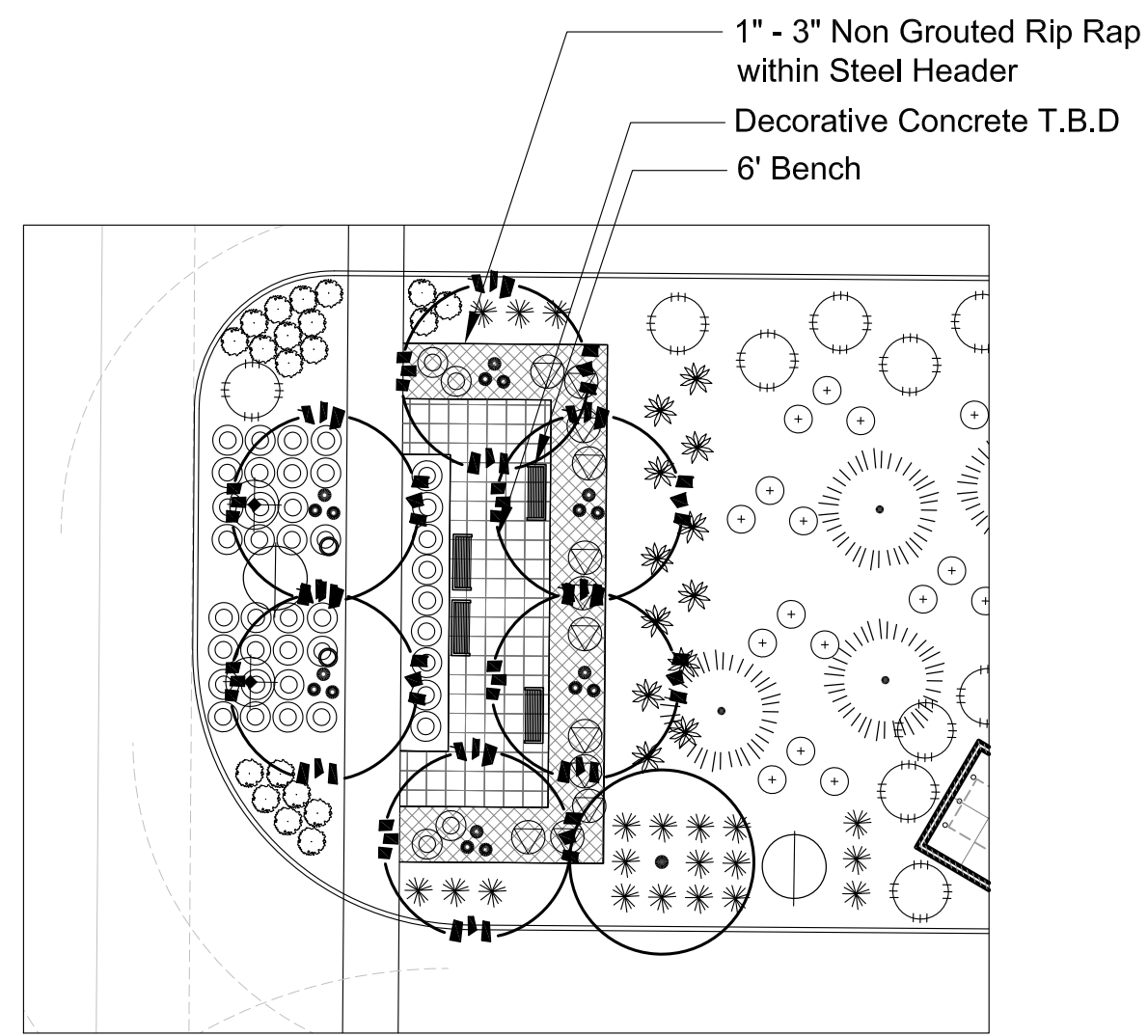
LEGACY BUSINESS PARK
 Crismon Road & Pecos Road
 Mesa, Arizona

PRELIMINARY LANDSCAPE PLAN 04-22-2022
 21061_ST11

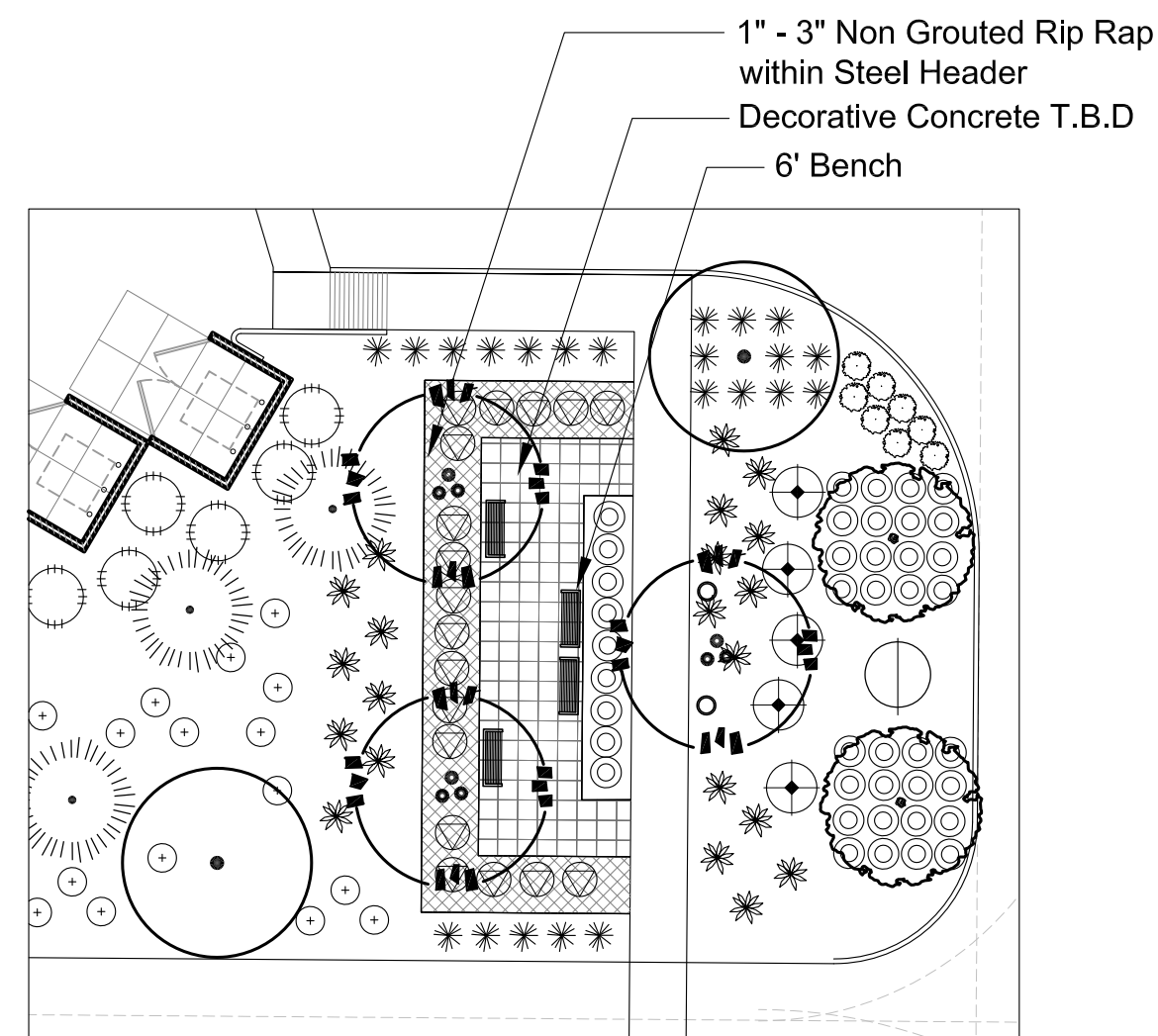
LASKIN & ASSOCIATES, INC.
 LANDSCAPE ARCHITECTS
 67 E. Weldon Ave.
 Suite 230
 Phoenix, Arizona 85012
 P (602) 840-7711
 F (602) 840-8021
 www.laskindesign.com

Butler Design Group, Inc
 architects & planners

PLA.02
 OF 3



AMENITY ENLARGEMENT 1" = 20'
NODE 1



AMENITY ENLARGEMENT 1" = 20'
NODE 2

AMENITY NODE LEGEND

	Non Grouted Rip-Rap 1" - 3" (Color: Rock Pros Rose) Bury 2" Into Grade; 6" Minimum Thickness in Noted Areas
	Decorative Concrete (Color: T.B.D.)
	3/16" x 6" Steel Header Secure Every 48" with Metal Stake
	Amenity Node Furniture by Owner (T.B.D.)

AMENITY NODE CALCULATIONS:

AMENITY NODE	SF	LANDSCAPE NODES
AMENITY NODE 1	1234 SF	
AMENITY NODE 2	1234 SF	
AMENITY NODE 3	528 SF	
AMENITY NODE 4	500 SF	
AMENITY NODE 5	375 SF	
AMENITY NODE 6	375 SF	
AMENITY NODE 7	708 SF	
AMENITY NODE 8	698 SF	
AMENITY NODE 9	698 SF	
AMENITY NODE 10	698 SF	

AMENITY NODE	SF	ARCH NODES
AMENITY NODE 1	1234 SF	
AMENITY NODE 2	1234 SF	
AMENITY NODE 3	528 SF	
AMENITY NODE 4	500 SF	
AMENITY NODE 5	375 SF	
AMENITY NODE 6	375 SF	
AMENITY NODE 7	708 SF	
AMENITY NODE 8	698 SF	
AMENITY NODE 9	698 SF	
AMENITY NODE 10	698 SF	

TOTALS

REQUIRED:	6,450 SF
PROVIDED:	7,048 SF

OPEN SPACE CALCULATIONS

TOTAL LANDSCAPE AREA +/- 21.6%: 421,958 S.F. (9.7 ACRES)

LANDSCAPE COVERAGE:

- EVERGREE TREES 32,700 SF
- SHADE TREES 8,950 SF
- ORNAMENTAL TREES 1,850 SF
- LARGE SHRUBS 85,100 SF
- MEDIUM SHRUBS 79,250 SF
- SMALL SHRUBS 23,270 SF
- GROUND COVER 15,325 SF

421,958 SF LS AREA / 246,445 SF OPEN SPACE COVERAGE = 58.4%
(MINIMUM 50% REQUIRED PER 11-33-2: - GENERAL REQUIREMENTS SECTION E - OPEN SPACE)

AMENITY NODES AREA:

- SINGLE NODE: MINIMUM 256 S.F. (16' X 16')
- TOTAL AMENITY NODES (10): 7,048 S.F. (0.16 ACRES)

PRELIMINARY LANDSCAPE PLAN GENERAL NOTES:

- THE ENTIRE SITE WILL BE MAINTAINED IN ACCORDANCE WITH CITY OF MESA STANDARDS.
- ALL TREES WILL BE 15 GALLON OR LARGER.
- AN AUTOMATIC IRRIGATION SYSTEM WILL BE INSTALLED GUARANTEEING 100% COVERAGE TO ALL LANDSCAPE AREAS.
- DECOMPOSED GRANITE, 2" MINIMUM THICKNESS, TO BE PLACED IN ALL LANDSCAPE AREAS NOT DESIGNATED FOR RIP-RAP OR LAWN.
- ALL EARTHWORK WILL BE DONE SO THAT ALL WATER DRAINS AWAY FROM SIDEWALKS / STRUCTURES AND WILL NOT IMPEDE NATURAL DRAINAGE EASEMENTS.
- STRUCTURES AND LANDSCAPING WITHIN A SIGHT VISIBILITY TRIANGLE OR SIGHT VISIBILITY LINE WILL NOT EXCEED 24" INCHES.
- FINAL LANDSCAPE PLANS TO MEET OR EXCEED MINIMUM CITY STANDARDS.

EXISTING SITE CONDITION NOTES:

EXISTING STREETScape LANDSCAPE AND IRRIGATION WAS FIELD VERIFIED ON 01/24/2022. ALL PLANT MATERIAL SHOWN WAS FOUND TO BE HEALTHY. IRRIGATION SYSTEM CURRENTLY WORKING PROPERLY. GENERAL CONTRACTOR TO HOLD A PRE-CON MEETING BETWEEN LANDSCAPE ARCHITECT, LANDSCAPE CONTRACTOR, TO REVIEW THE CURRENT CONDITION OF AREAS TO BE PROTECTED IN PLACE PRIOR TO NEW CONSTRUCTION OR AGREES TO BE HELD TO SITE CONDITIONS RECORDED ON 01/24/2022 BY LASKIN AND ASSOCIATES IF EXISTING LANDSCAPE DECLINES OR IRRIGATION SYSTEM IS DAMAGED DURING NEW CONSTRUCTION.

GENERAL BUILDING FOUNDATION / IRRIGATION NOTES:

POSITIVE DRAINAGE NEEDS TO BE MAINTAINED FROM THE BUILDINGS EXTERIOR WALLS FOR A MINIMUM OF 10'. NO IRRIGATED LANDSCAPE MATERIALS WITHIN THE FIRST 3' NEXT TO THE BUILDING FOUNDATION. WITHIN 3'-5' OF THE BUILDING FOUNDATION ONLY LANDSCAPE MATERIALS THAT CAN BE IRRIGATED WITH A 1 GPH EMITTER ARE ALLOWED. ANY LANDSCAPE MATERIALS REQUIRING AN EMITTER GREATER THAN 1GPH, INCLUDING TURF SHALL BE A MINIMUM OF 5' FROM THE OUTSIDE FACE OF THE BUILDING FOUNDATION. ALL IRRIGATION LINES, OTHER THAN THOSE SUPPLYING INDIVIDUAL EMITTERS SHALL NOT BE PLACED WITHIN 5' OF THE BUILDING FOUNDATION.

PROJECT TEAM

Developer
Merit Partnes, Inc
2555 East Camelback Road Suite 180
Phoenix, Arizona 85016
Contact: Nic Fischer
Ph: (480.483.0360)
Em: nic@MPIAZ.com

Civil Engineer
Hilgart Wilson
2141 E Highland Avenue, Ste 250
Phoenix, Arizona 85016
Contact: Casey Whiteman
Ph: (602) 730-3835
Em: CWhiteman@HilgartWilson.com

Architect
Butler Design Group
5017 E. Washington St. Ste 107
Phoenix, Arizona 85034
Contact: Rick Butler
Ph: (602) 957-1800
Em: rbutter@butlerdesigngroup.com

Landscape Architect
Laskin and Associates, Inc
67 E. Weldon Avenue, Ste. 230
Phoenix, Arizona 85012
Contact: Hardy Laskin
Ph: (602) 840-7771
Em: hardy@laskindesign.com

PROJECT DATA

Proposed Zoning:	LI-PAD
APN#:	313-25-859N
Net Site Area: (Including Drainage Channel)	1,957,918 S.F. (44.9AC.)
Total Building Area:	645,470 S.F.
Building Coverage:	33%
Lot Coverage: (Impervious Surfaces)	79.5%
Common Open Space Required:	
BLDG A. 265,911 SF @ 1%:	2,659 S.F.
BLDG B. 379,559 S.F. @ 1%:	3,796 S.F.
Total Open Space Required:	6,455 S.F.
Open Space Provided:	7,048 S.F.

Building A

Site Area:	793,122 S.F. (18.2 AC.)
Building Area:	265,911 S.F.
Parking Required	
Office (22,600 S.F.) @ 1/375 S.F.:	60 Spaces
Warehouse (243,311 S.F.) @ 1/900 S.F.:	270 Spaces
Total Parking Required:	330 Spaces
Parking Provided:	337 Spaces
ADA Parking Required:	8 Spaces
ADA Parking Provided:	8 Spaces

Building B

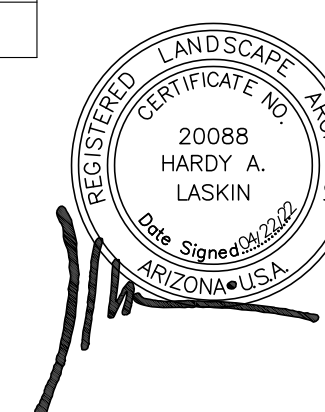
Site Area:	1,164,794 S.F. (26.7 AC.)
Building Area:	379,559 S.F.
Parking Required	
Office (17,600 S.F.) @ 1/375 S.F.:	47 Spaces
Warehouse (361,959 S.F.) @ 1/900 S.F.:	402 Spaces
Total Bldg.B Parking Required:	449 Spaces
Bldg. B Parking Provided:	316 Spaces
ADA Parking Required:	8 Spaces
ADA Parking Provided:	8 Spaces

Total Parking Required:	779 Spaces
Parking Provided:	653 Spaces
Total ADA Parking Required:	16 Spaces
Total ADA Parking Provided:	16 Spaces
Max Building Height Allowed:	40' Max.
Proposed Building Height:	46'-6" Max.

LOCATION	TREES		SHRUBS	
	REQUIRED	FURNISHED	REQUIRED	FURNISHED
NORTH 1,666'-00" LF				
3 TREE / PER 100' L.F.T.	50	66		
20 SHRUBS / PER 100' L.F.T.			345	347
EAST 1,132'-0" LF				
PRIVATE DRIVE				
1 TREE / PER 25 L.F.T.	45	48		
4 SHRUBS / PER 25 L.F.T.			180	714
SOUTH 1,303'-0" LF				
PECOS RD				
1 TREE / PER 25 L.F.T.	52	52		
6 SHRUBS / PER 25 L.F.T.			312	1,331
WEST 1,489'-0" LF				
PERIMETER				
3 TREE / PER 100' L.F.T.	45	46		
20 SHRUBS / PER 100' L.F.T.			298	298
PARKING LOT				
1 TREE / PER 15' ISLAND	111	111		
3 SHRUBS / PER 15' ISLAND			333	333
FOUNDATION PLANTING				
1 TREE / PER 50 L.F.T.	58	79	0	0
TOTAL REQRD/FRNSHD	361	402	1,468	3,023
SIZE REQRD/FURNISHED				
TREES 36" BOX MIN 25%	117	141		
24" BOX MIN 50%	233	325		
15 GAL	0	114		
5 GAL	0	0		
Date Palms	0	0		
TOTAL TREES	350	580		
SHRUBS 15 GAL or Larger			0	
5 GAL			7,199	
1 GAL			613	
POT/FLAT			0	
Existing				
TOTAL SHRUBS			7,812	



LEGACY BUSINESS PARK
Crismon Road & Pecos Road
Mesa, Arizona



PRELIMINARY LANDSCAPE PLAN NODE ENLARGEMENTS 04-22-2022 21061_ST11