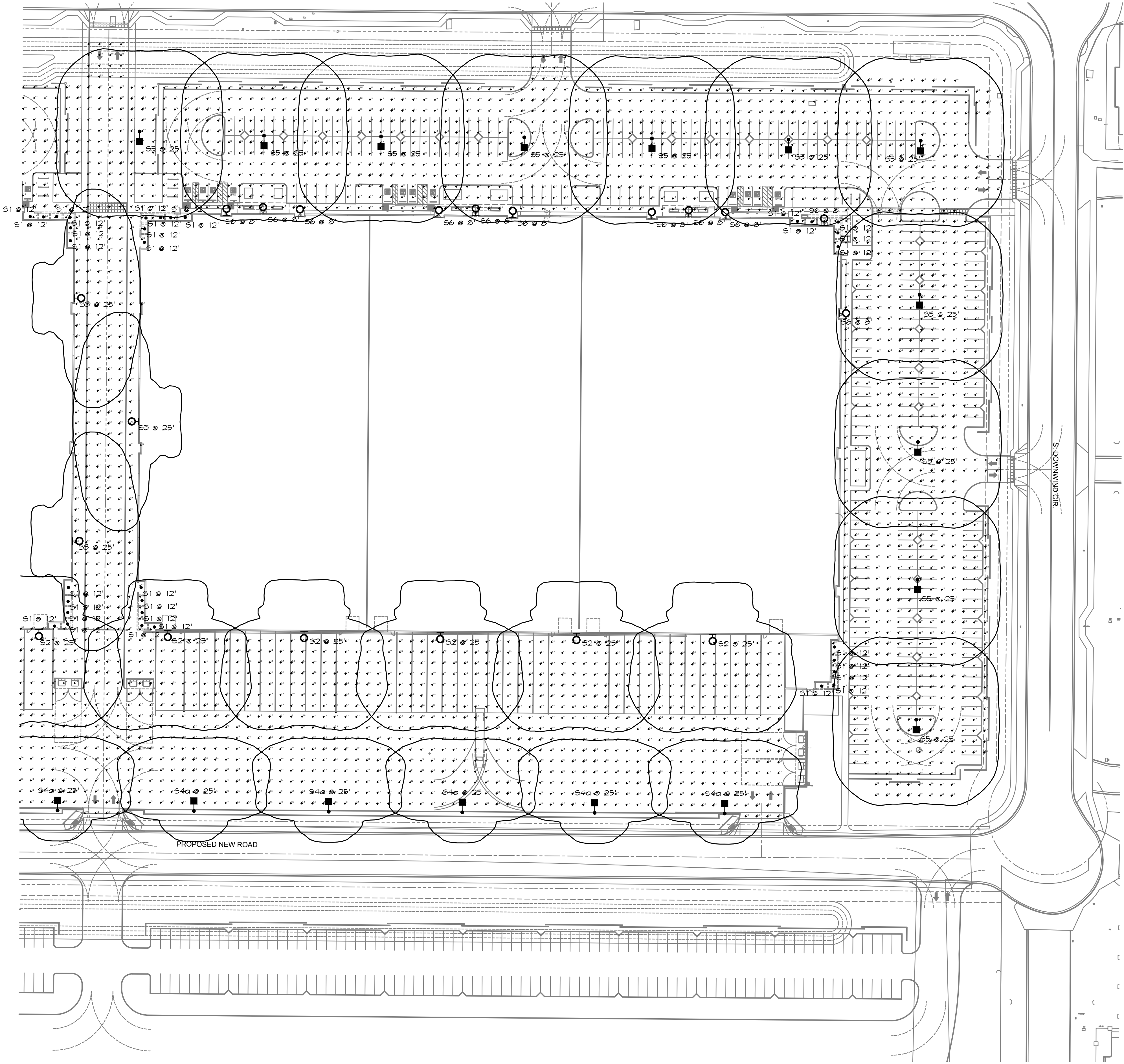
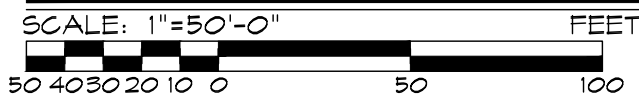


Statistics						
Description	Symbol	Avg	Max	Min	Max/Min	Avg/Min
SITE FC AFG	+	2.4 fc	12.5 fc	0.2 fc	62.5:1	12.0:1

Schedule								
Symbol	Label	QTY	Manufacturer	Catalog	Description	Lamp	LLF	Total Output
•	S1	42	Lithonia Lighting	LDN6 40/10 L66AR LSS	6IN LDN, 4000K, 1000LM, CLEAR, SEMI-SPECULAR REFLECTOR, CR80	4000K LED	0.91	962
♀	S2	10	Lithonia Lighting	DSX2 LED P6 40K TFTM MVOLT WBA	DSX2 LED P6 40K TFTM MVOLT	4000K LED	0.91	49183
♀	S3	3	Lithonia Lighting	DSX2 LED P6 40K T2M MVOLT WBA	DSX2 LED P6 40K T2M MVOLT	4000K LED	0.91	40701
■	S4	3	Lithonia Lighting	DSX2 LED P6 40K TFTM MVOLT HS / SSS 22' 5" POLE WITH 2' 5" BASE	DSX2 LED P6 40K TFTM MVOLT with housieside shield	4000K LED	0.91	31845
■	S4a	10	Lithonia Lighting	DSX2 LED P6 40K TFTM MVOLT HS / SSS 22' 5" POLE WITH 2' 5" BASE	DSX2 LED P6 40K TFTM MVOLT with housieside shield	4000K LED	0.91	31845
■	S5	20	Lithonia Lighting	DSX2 LED P6 40K T5W MVOLT / SSS 22' 5" POLE WITH 2' 5" BASE	DSX2 LED P6 40K T5W MVOLT	4000K LED	0.91	42069
♀	S6	22	VISA LIGHTING	Passage OW2484 L40K-H LUM MVOLT BSIL (verify finish)	WALL MOUNT LINEAR DIFFUSE WHITE LENS	4000K LED	0.91	2927



SITE PHOTOMETRIC PLAN - WAREHOUSE 108



PEARSON  
ENGINEERING  
ASSOCIATES  
INC.

8825 N. 23RD AVENUE  
PHOENIX, ARIZONA 85021  
PHONE: (602)264-0807  
FAX: (602)274-7542  
WEB SITE: www.pearson.com

DESIGNER: **RON**  
PROJECT NO: 2022009

REVISION DATE DESCRIPTION

Project Number  
7595-100  
Date  
03.02.2022  
Drawn By  
ADO  
Checked By  
JJP

SITE PHOTOMETRIC  
PLAN - WAREHOUSE 108  
E1.1

SKYBRIDGE ARIZONA AT  
PHOENIX-MESA GATEWAY  
AIRPORT  
7759 EAST VELOCITY WAY  
MESA, ARIZONA 85212  
NEW WAREHOUSE 109



adm  
group

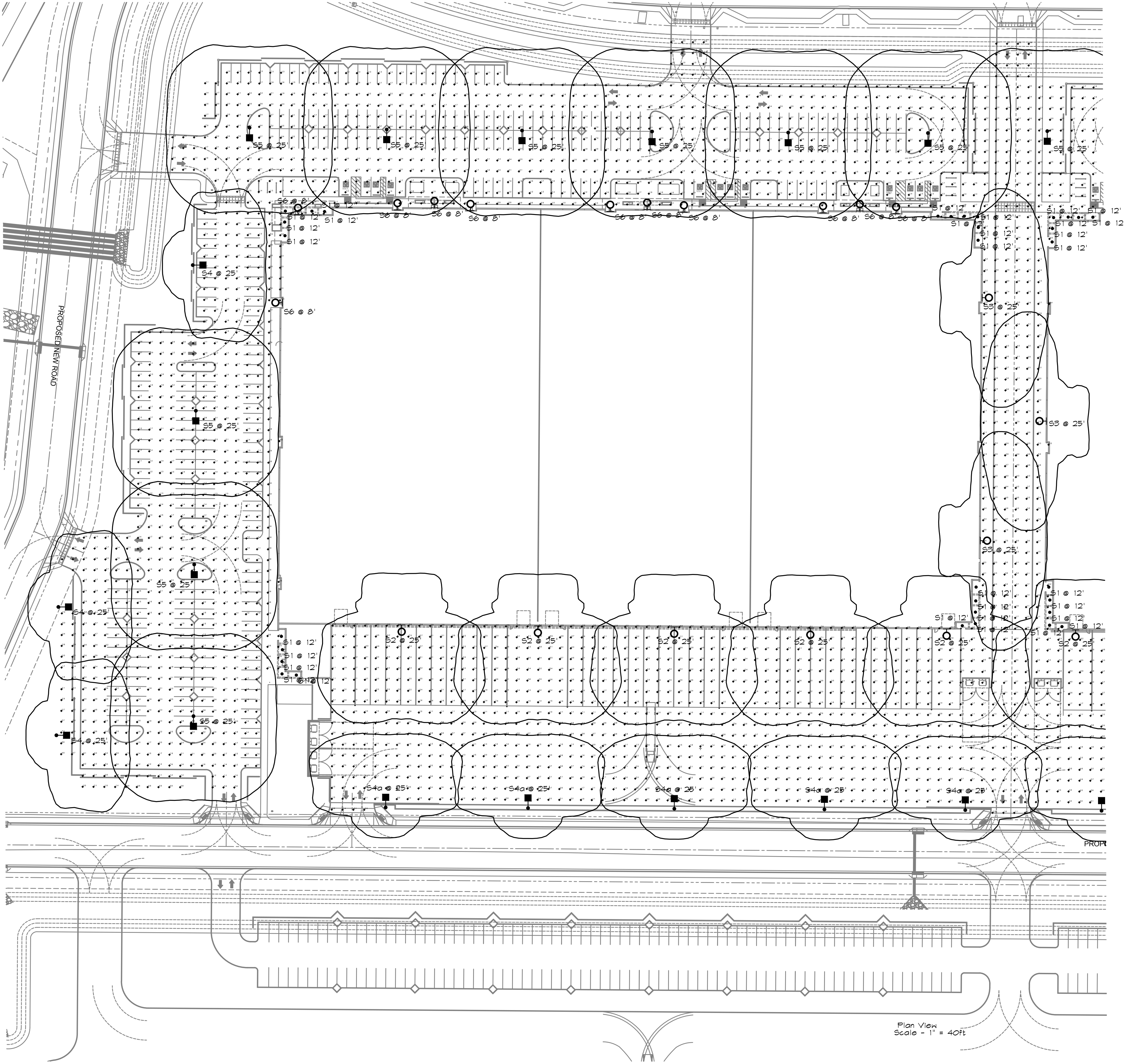
architecture.  
design.  
management.

2100 WEST 15TH STREET | TEMPE, AZ 85281 | 480.285.3900

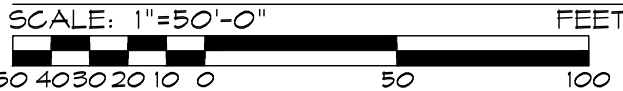


Statistics						
Description	Symbol	Avg	Max	Min	Max/Min	Avg/Min
SITE FC AFG	+	2.4 fc	12.5 fc	0.2 fc	62.5:1	12.0:1

Schedule								
Symbol	Label	QTY	Manufacturer	Catalog	Description	Lamp	LLF	Total Output
•	S1	42	Lithonia Lighting	LDN6 40/10 LOGAR LSS	6IN LDN, 4000K, 1000LM, CLEAR, SEMI-SPECULAR REFLECTOR, CR80	4000K LED	0.91	952
⊙	S2	10	Lithonia Lighting	DSX2 LED P6 40K TFTM MVOLT WBA	DSX2 LED P6 40K TFTM MVOLT	4000K LED	0.91	49183
⊙	S3	3	Lithonia Lighting	DSX2 LED P6 40K T2M MVOLT WBA	DSX2 LED P6 40K T2M MVOLT	4000K LED	0.91	40701
■	S4	3	Lithonia Lighting	DSX2 LED P6 40K TFTM MVOLT HS / SSS 22' 5" POLE WITH 2' 5" BASE	DSX2 LED P6 40K TFTM MVOLT with houseside shield	4000K LED	0.91	31845
■	S4a	10	Lithonia Lighting	DSX2 LED P6 40K TFTM MVOLT HS / SSS 22' 5" POLE WITH 3' BASE	DSX2 LED P6 40K TFTM MVOLT with houseside shield	4000K LED	0.91	31845
■	S5	20	Lithonia Lighting	DSX2 LED P6 40K T5W MVOLT / SSS 22' 5" POLE WITH 2' 5" BASE	DSX2 LED P6 40K T5W MVOLT	4000K LED	0.91	42069
⊙	S6	22	VISA LIGHTING	Passage OW2484 L40K-H LUM MVOLT BSIL (verify finish)	WALL MOUNT LINEAR DIFFUSE WHITE LENS	4000K LED	0.91	2927



SITE PHOTOMETRIC PLAN - WAREHOUSE 109



PEARSON  
ENGINEERING  
ASSOCIATES  
INC.

8825 N. 23RD AVENUE  
PHOENIX, ARIZONA 85021  
PHONE: (602)264-0807  
FAX: (602)274-7542  
WEB SITE: www.pearsong.com

DESIGNER: **RON**  
PROJECT NO: 2022009

REVISION	DATE	DESCRIPTION
----------	------	-------------

Project Number 75985-100	Date 03.02.2022	Drawn By <b>ADO</b>	Checked By <b>MJM</b>
-----------------------------	--------------------	------------------------	--------------------------

SITE PHOTOMETRIC  
PLAN - WAREHOUSE 109

E1.2

SKYBRIDGE ARIZONA AT  
PHOENIX-MESA GATEWAY  
AIRPORT  
7759 EAST VELOCITY WAY  
MESA, ARIZONA 85212  
NEW WAREHOUSE 109



architecture.  
design.  
management.

group  
adm

2100 WEST 15TH STREET | TEMPE, AZ 85281 | 480.285.3900











