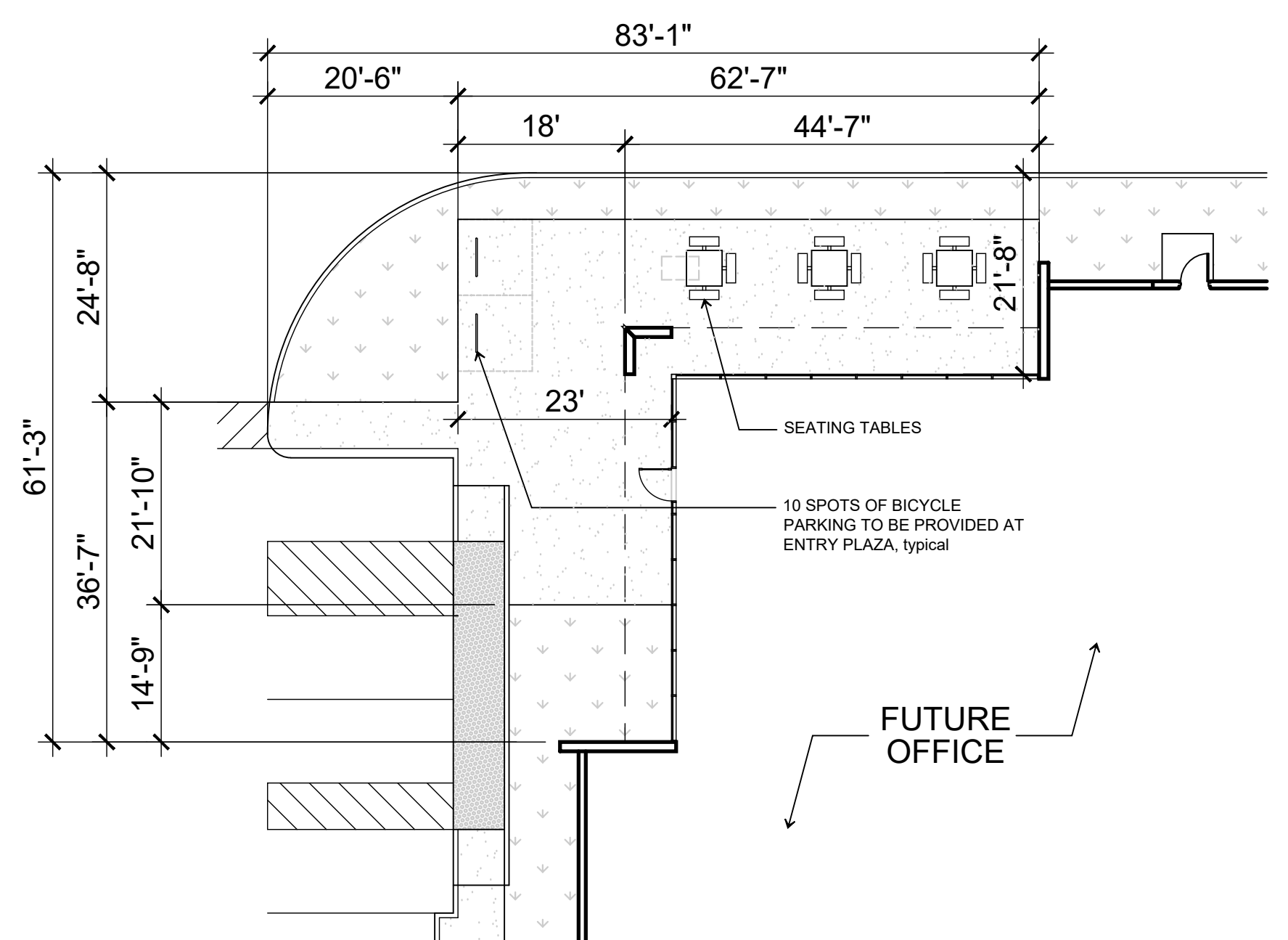
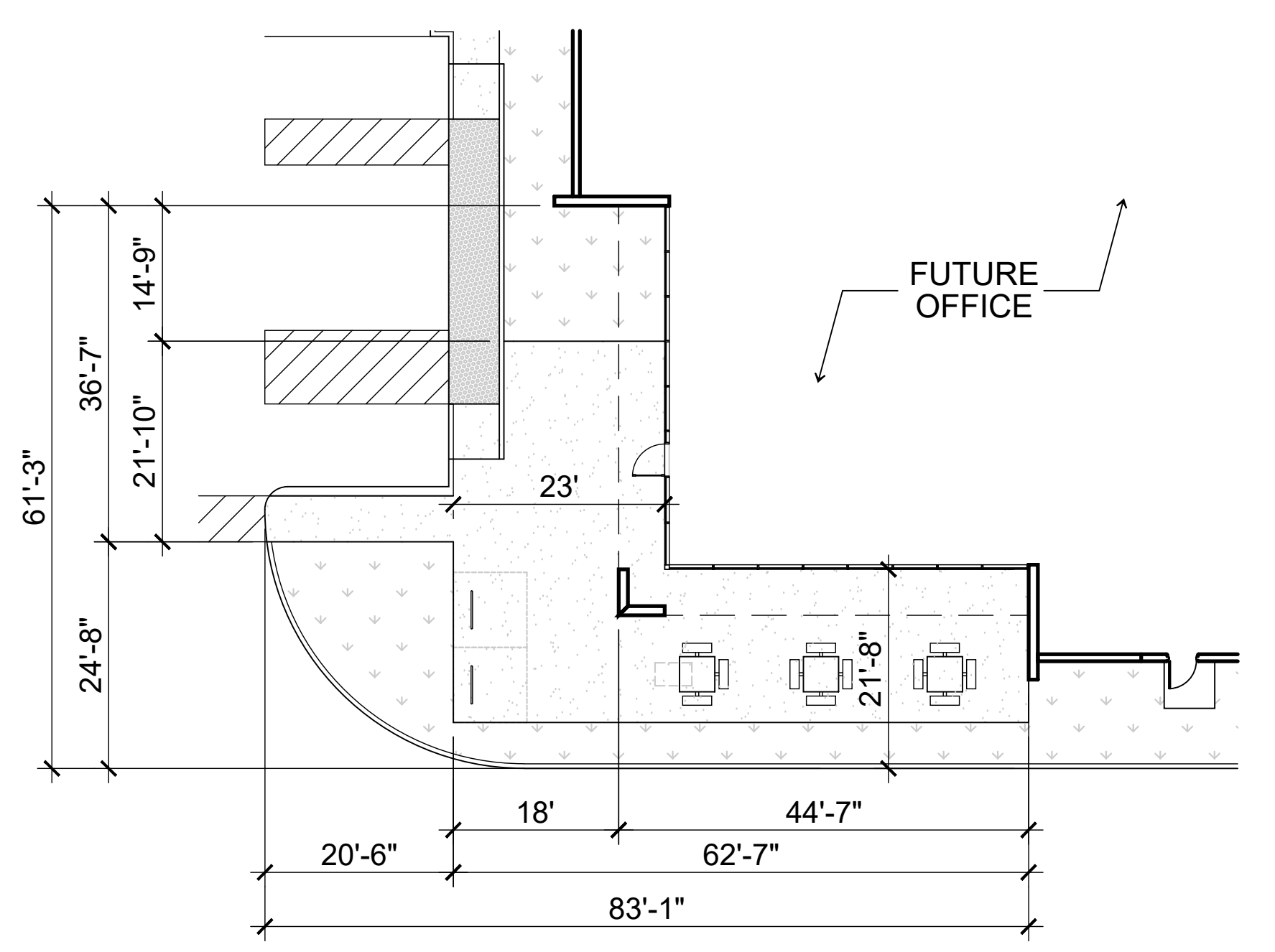


GROSS LOT AREA:	401,463 sf 9.2 acres
NET LOT AREA:	360,831 sf 8.3 acres
TOTAL BUILDING AREA:	158,180 sf
SITE COVERAGE (on NET):	43.8 %
DOCK DOOR RATIO:	1:7,190 sf
PARKING REQUIRED	187 spaces
OFFICE (7,000 sf at 1:375 sf)	19 spaces
WAREHOUSE (151,180 sf at 1:900 sf)	168 spaces
PARKING PROVIDED:	189 spaces
STANDARD:	183 spaces
HANDICAP ACCESSIBLE:	6 spaces
BICYCLE PARKING REQUIRED	19 spaces
(186 PARKING STALLS at 1:10 = 19 BICYCLE SPACES)	
BICYCLE PARKING PROVIDED	20 spaces
LANDSCAPE PROVIDED:	55,128 sf
EMPLOYEE OPEN SPACE REQUIRED:	1,580 sf
(158,180 sf AT 1% = 1,580 sf)	
EMPLOYEE OPEN SPACE PROVIDED:	2,084 sf



1 - ENLARGED NORTHWEST EMPLOYEE/ COMMON BREAK AREA



2 - ENLARGED SOUTHWEST EMPLOYEE/ COMMON BREAK AREA

PRELIMINARY SITE PLAN

07 April 2022

Power Road Logistics
3309 S. Power Road
Mesa, Arizona

