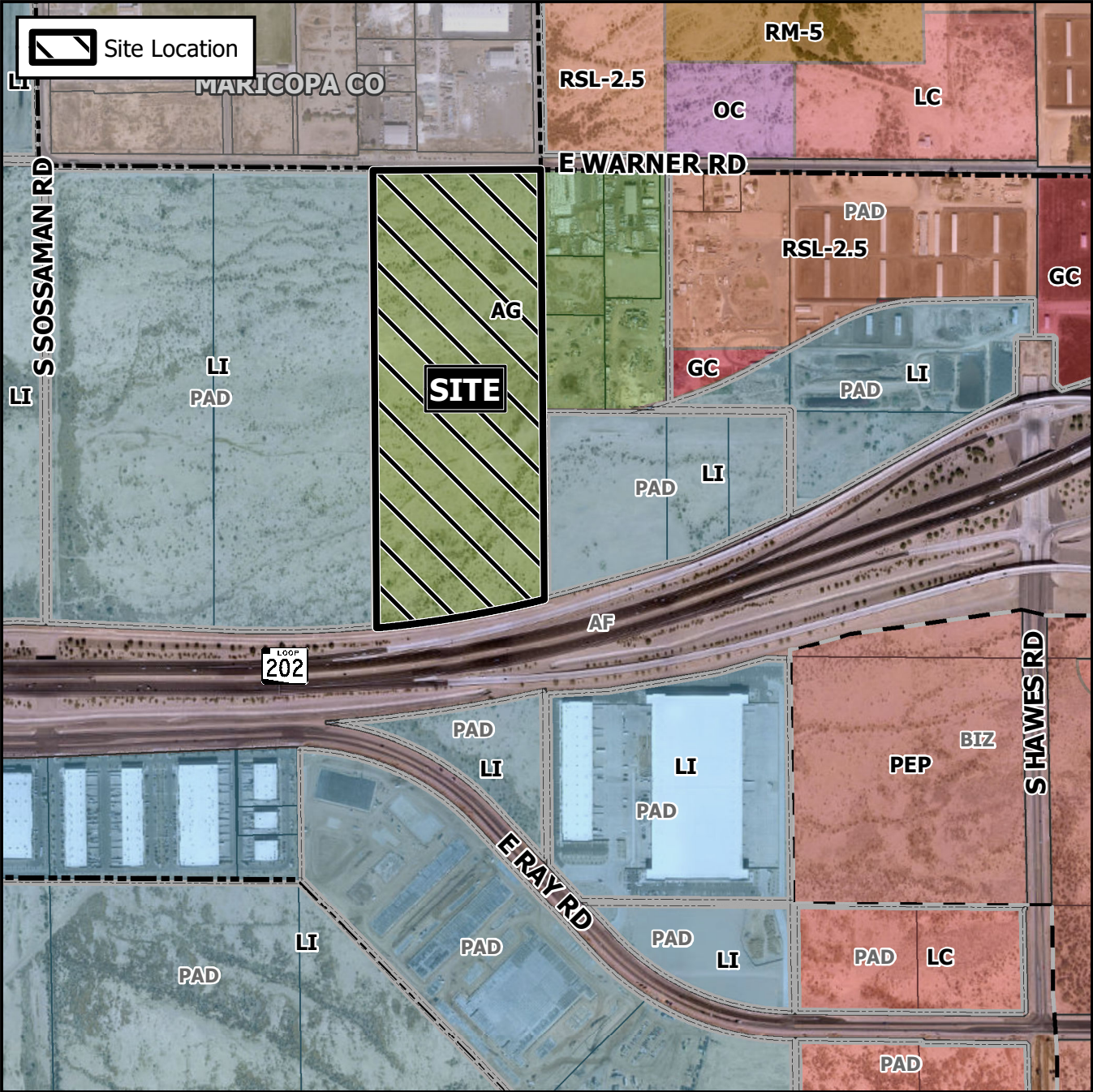


## Planning and Zoning Vicinity Map: ZON22-00093



## Case Details

## CASE:

**PRE-PLAT :** ☒

ZON22-00093

**SITE / ADDRESS:**

District 6. Within the 7900 block of East Warner Road (south side). Located east of Sossaman Road and west of Hawes Road (50± acres).

**REQUEST:**

Rezone from Agricultural (AG) to Light Industrial with a Planned Area Development overlay (LI-PAD) and Site Plan Review. This request will allow for an industrial development.



A horizontal number line with tick marks at 0, 500, and 1,000. The word "Feet" is written below the line.

