



# Liquor License Map

City of Mesa Tax & Licensing

Requesting Approval:



**CORK CRUSH**

**9241 E CADENCE PKWY**

License Type:

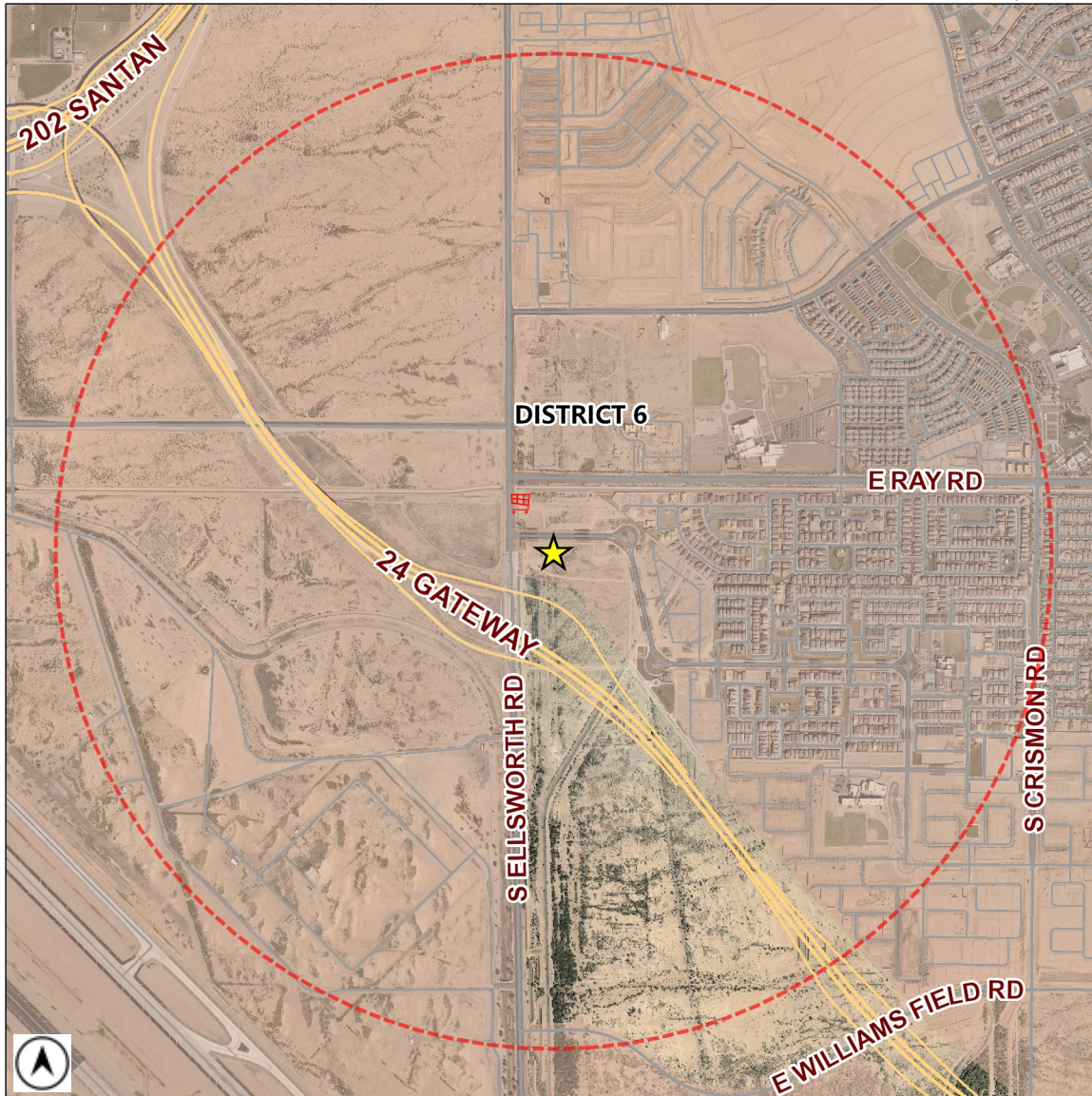
**BEER / WINE BAR (PEND)**

License Number:

**LICA22-04648**

Estimated Population (1 Mile): **1203**

Source: MAG ACS 2013-2017 5 year data



	BAR	0		CLUB	0		HOTEL-MOTEL	0		MICRO-BREWERY	0
	BAR (PEND)	0		CLUB (PEND)	0		HOTEL-MOTEL (PEND)	0		MICRO-BREWERY (PEND)	0
	BEER / WINE BAR	0		CONVEYANCE	0		IN-STATE PRODUCER	0		RESTAURANT	0
	BEER / WINE BAR (PEND)	0		CONVEYANCE (PEND)	0		IN-STATE PRODUCER (PEND)	0		RESTAURANT (PEND)	0
	BEER / WINE STORE	1		DOMESTIC FARM WINERY	0		LIQUOR STORE	0		WHOLESALE	0
	BEER / WINE STORE (PEND)	0		DOMESTIC FARM WINERY (PEND)	0		LIQUOR STORE (PEND)	0		WHOLESALE (PEND)	0
	BEER / WINE STORE / SAMPLING	0		GOVERNMENT	0		LIQUOR STORE / SAMPLING	0			
	BEER / WINE STORE / SAMPLING (PEND)	0		GOVERNMENT (PEND)	0		LIQUOR STORE / SAMPLING (PEND)	0		1 MILE BUFFER	

Total Count: 1 liquor licenses