

MONTEREY PARK EXPANSION

April 28, 2022



PROJECT OVERVIEW

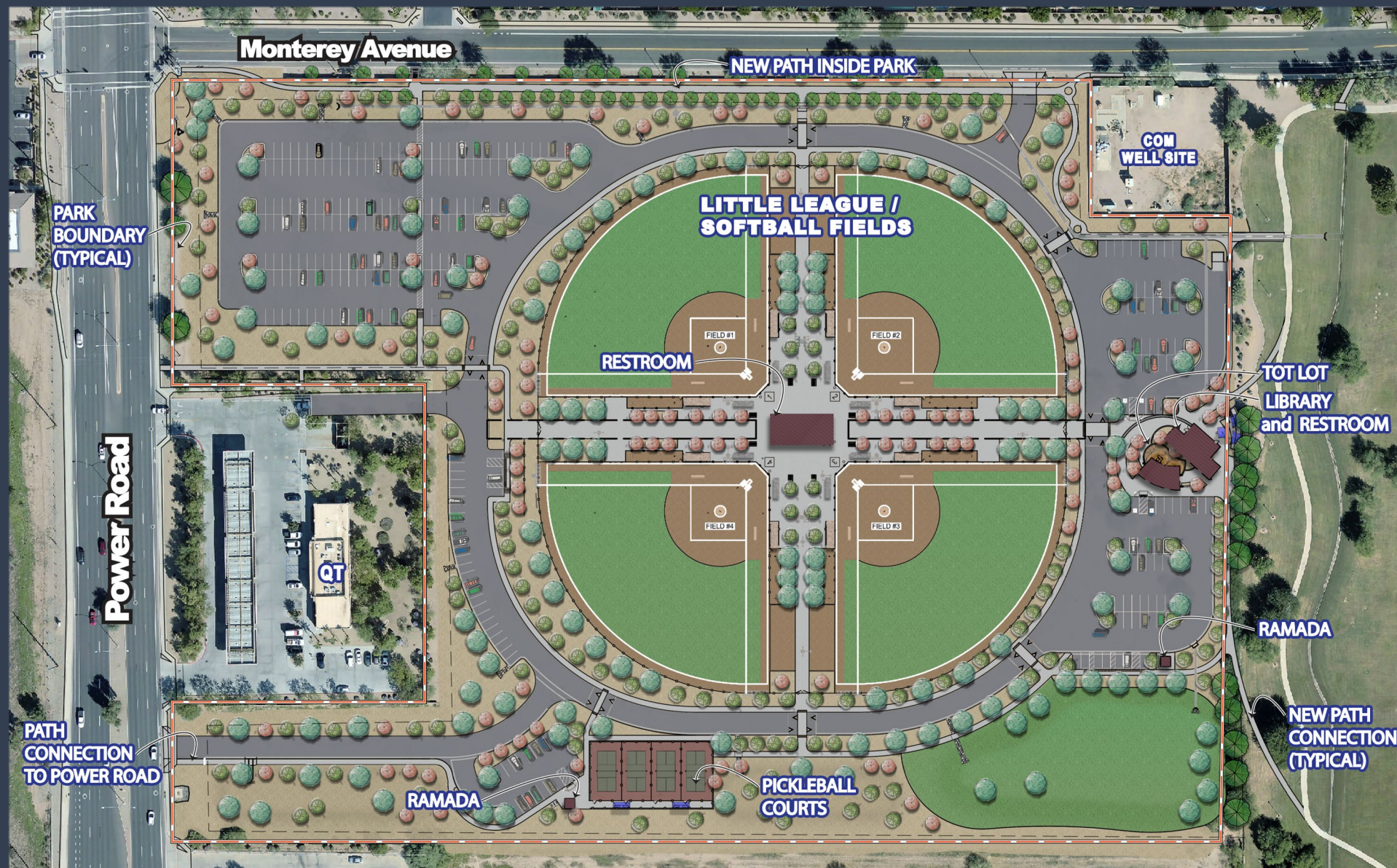


Project Components

- Little League/Softball Quad
- Library to Replace MEL
- Tot-lot Playground
- Restroom Facilities
- Pickleball Courts
- 3 Access Driveways
- Circular Drive Aisle
- 323 Parking Spaces

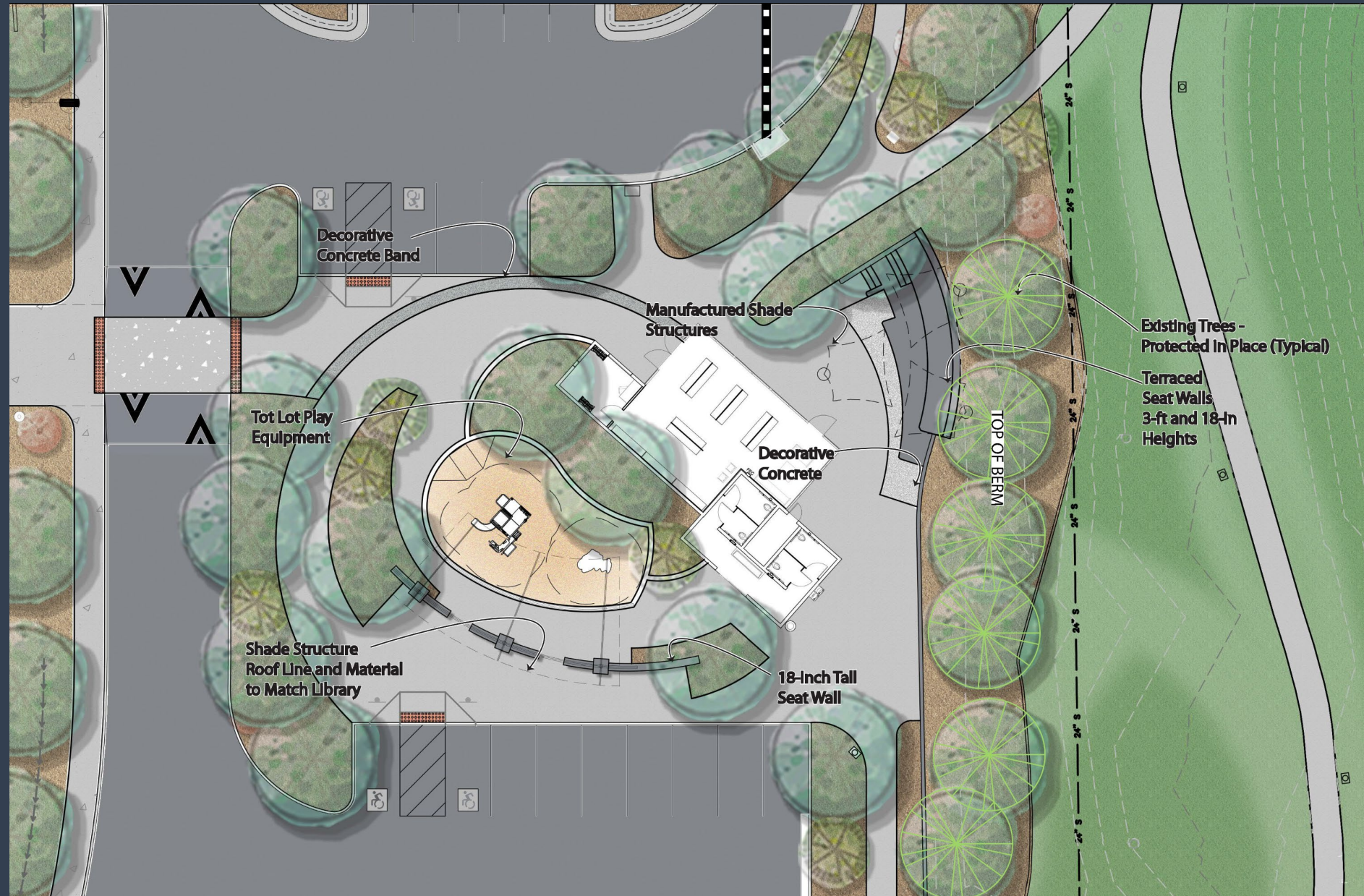
Park Features

- 4 New Little League / Softball Fields
- Restroom Facility within Quad
- 4 Pickleball Courts
- Tot-lot at Library Plaza
- Restroom at Library Plaza
- Ramadas / Shade



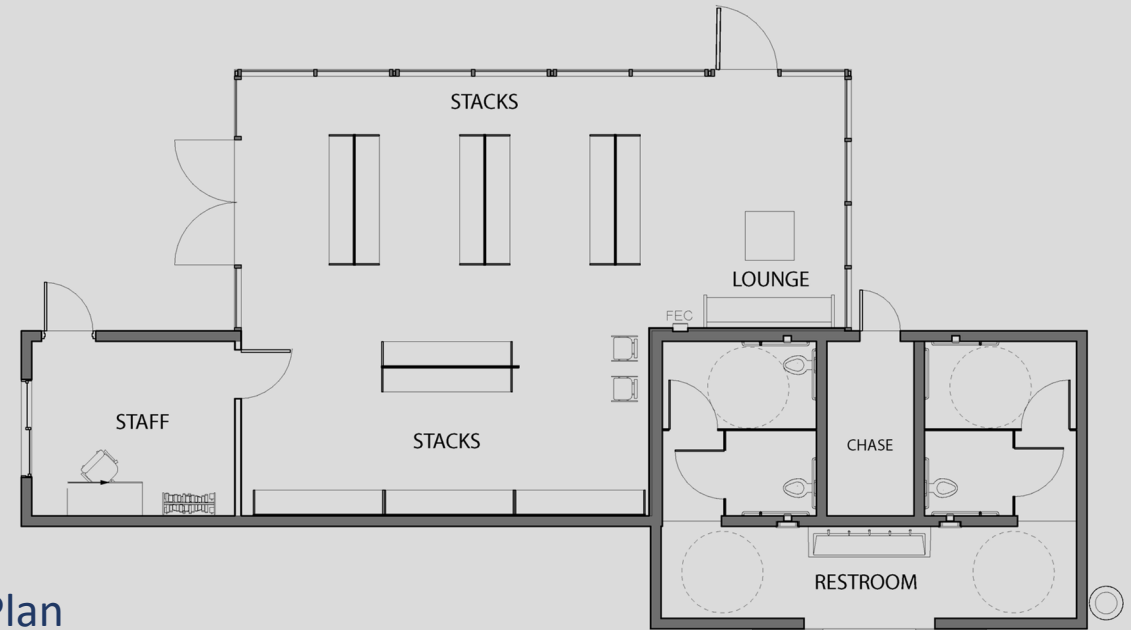
Library & Playground Plaza

- 1,500 SF Library/Restroom
- 2 to 5-Year-Old Tot-Lot with Shaded Seating
- Adjacent Restroom with Separate Access Outside of Library
- External Library Programming and Seating Area with Shade



Library Programming

- Minimize Staffing
- Self-Service Access
 - Open+ Technology
- High Visibility and Natural Light
- Technology-Centered Design
- 1,000 SF Library Space
 - 690 SF Library Materials and Technology
 - 170 SF Lounge / Reading Area
 - 140 SF Staff Space



Floor Plan



Library Front Entrance
North Perspective

Estimated Costs

- Construction Cost \$13.8 M
 - GMP No. 1 \$8.9 M
 - GMP No. 2 \$4.9 M
- Total Project Cost \$16.5 M
- 2018 Bond Estimate \$12.3 M

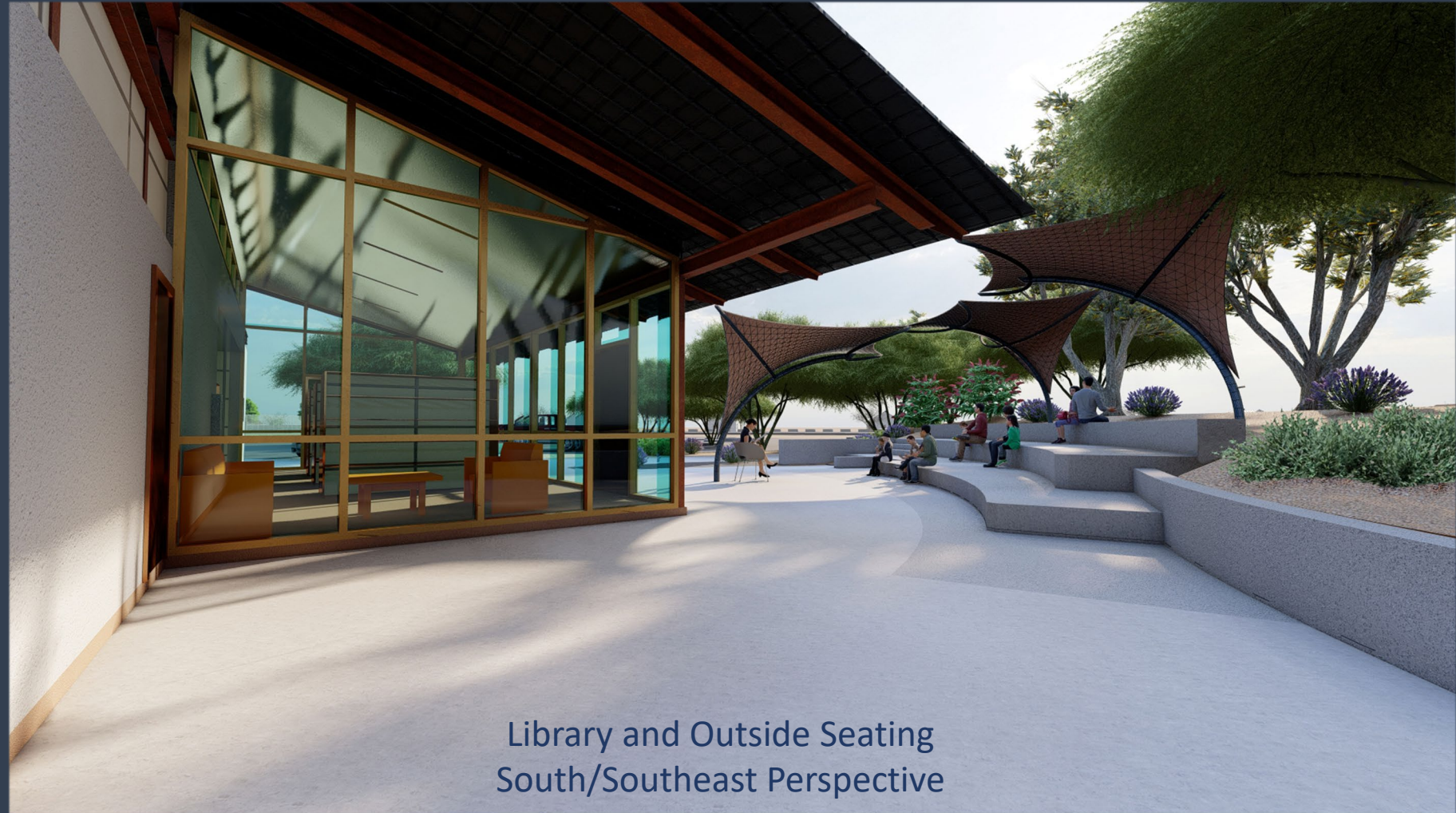
Estimated Schedule

- Project Start- June 2022
- Project Completion – June 2023

Construction

Phasing

- GMP No. 1 – Grading, Utilities, Landscape and Irrigation, Hardscapes, Fencing
- GMP No. 2 – Buildings, Pickleball Courts, Paving, Playground, Site Furnishings



Library and Outside Seating
South/Southeast Perspective



QUESTIONS AND DISCUSSION



mesa·az