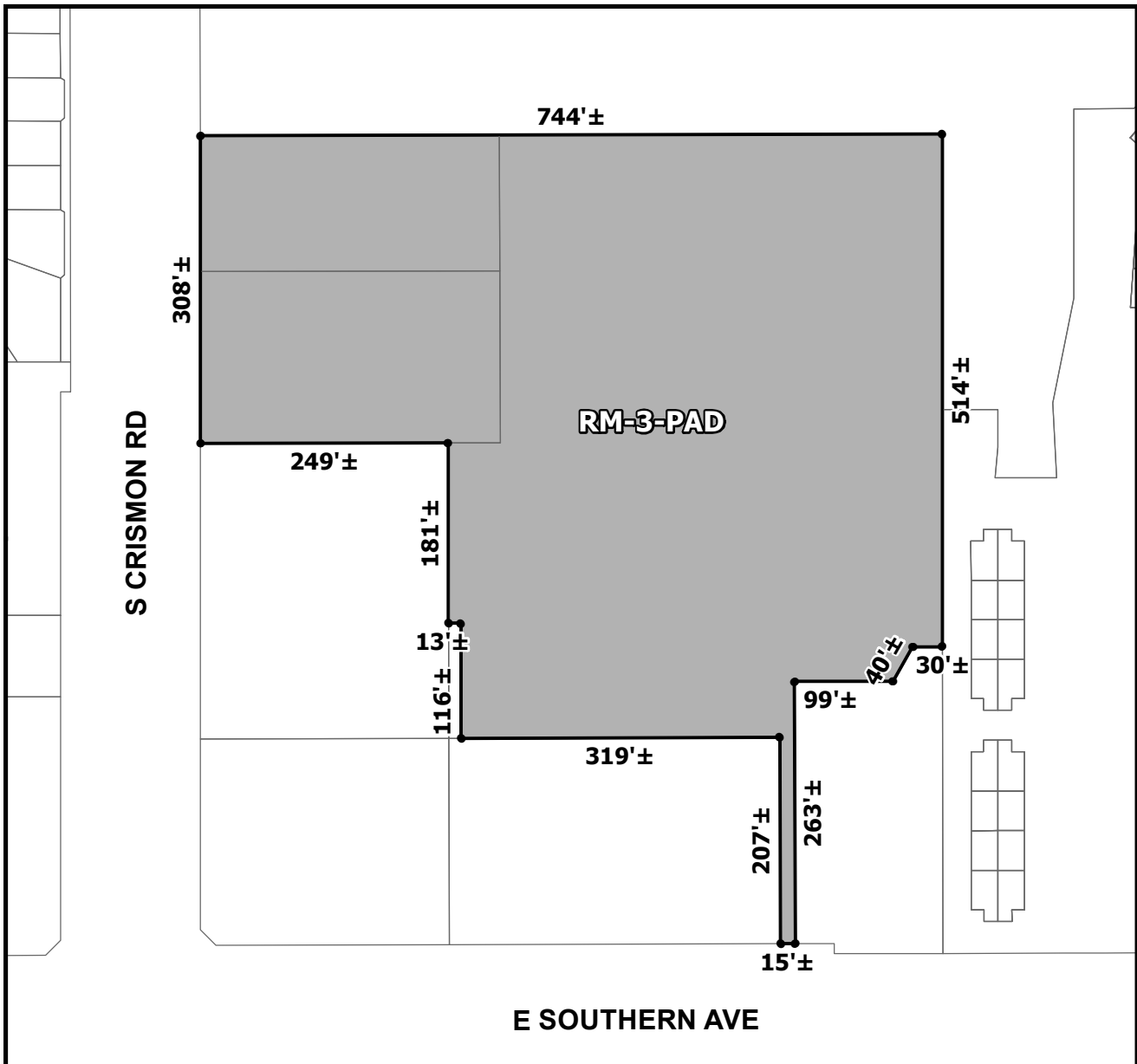




# OFFICIAL SUPPLEMENTARY ZONING MAP AMENDING THE CITY OF MESA ZONING MAP



**CASE: ZON21-00921**

**ACREAGE: 8.5±**

**REQUEST: REZONE FROM LIMITED COMMERCIAL WITH A PLANNED AREA DEVELOPMENT OVERLAY (LC-PAD) TO MULTIPLE RESIDENCE 3 WITH A PLANNED AREA DEVELOPMENT OVERLAY (RM-3-PAD), AND SITE PLAN REVIEW.**

**ORDINANCE:** \_\_\_\_\_

Please be advised that the attached zoning changes were approved by the Mesa City Council on \_\_\_\_\_, 2022 by Ordinance # \_\_\_\_\_. If you have any questions concerning these changes, contact the City of Mesa Planning Division at 480-644-2385.

**ATTEST:** \_\_\_\_\_ **DATE:** \_\_\_\_\_

**MAYOR**

**CITY CLERK**