

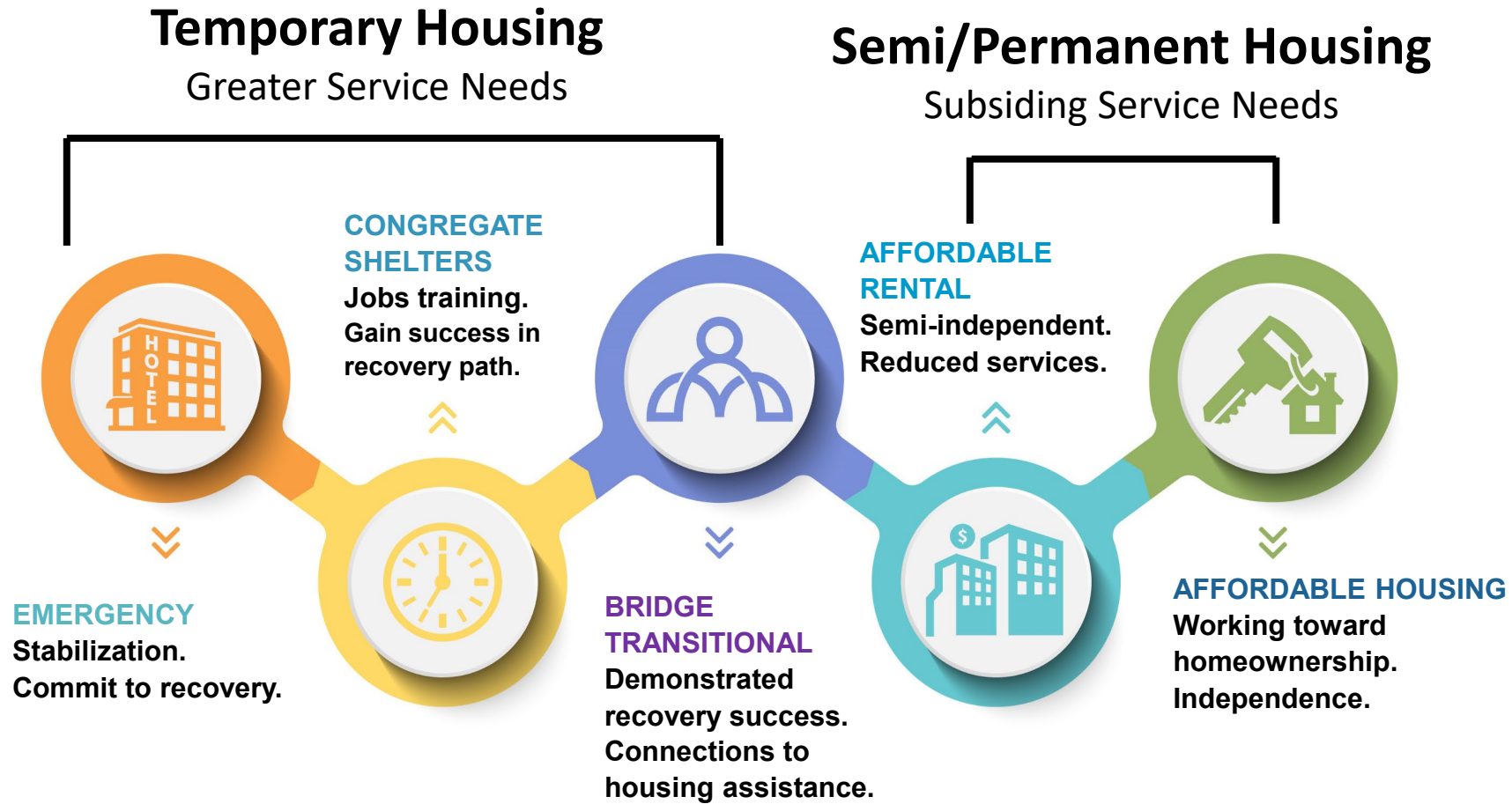


Addressing Homelessness– Rescue Funds

NATALIE LEWIS, DEPUTY CITY MANAGER

JANUARY 13, 2022

Mesa's Housing Path to Recovery



Temporary Housing

Greater Service Needs

Semi/Permanent Housing

Subsiding Service Needs



Process: Supporting Mesa's Housing Path to Recovery

Request for Proposals– summer 2021

- 28 proposals received, including two City of Mesa programs.

Staff recommendations are based on:

- Previous Council feedback
- Long-term solutions
- Existing and successful partnerships
- Close a gap to support the Housing Path to Recovery

Emergency Housing



Off the Streets— May 2020 through 2024

Demonstrated success: 71% of those served “graduated” on their recovery path

75 rooms with onsite police security and human services

5000 nights added to house more pets (huge barrier today)

Adding passenger van – offsite service connections

Adding 24x7 hotline for rangers/PD

ARPA investment (approx. \$2.3m/yr.) provides continued funding for this successful program through CY2024

Exploring long-term solution for the program

Shelter Housing & Jobs



Workforce Development/Jobs Access Center

Located at former Mesa Courts on College/MesaCAN

Partnership: City, New Leaf and Maricopa County

- Focus on adults 26+ years

Recommending approx. \$250k ARPA funding, for start-up and Mesa's share of staffing costs through 2024.

Estimate serving 100+ people per month

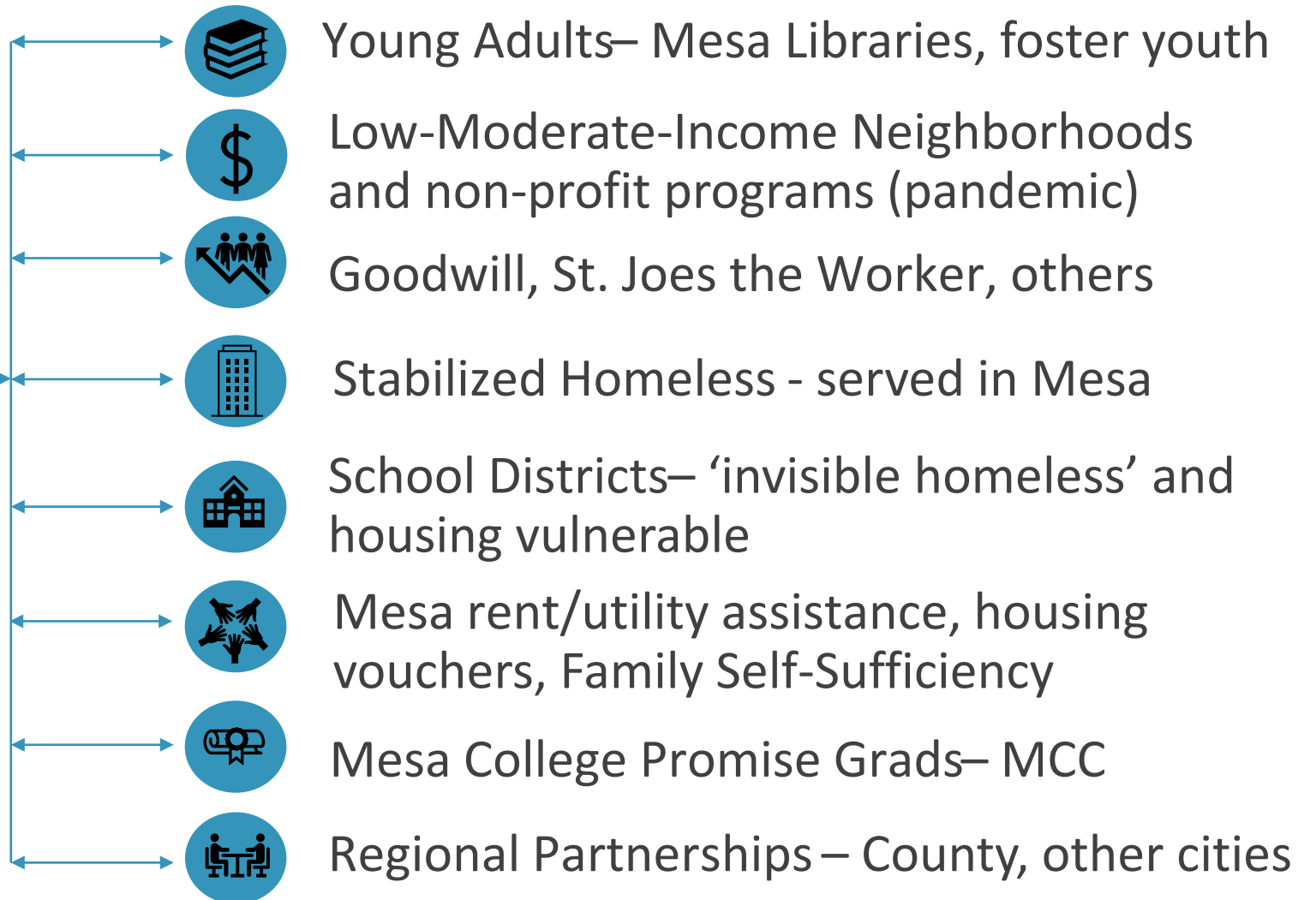
Immediate neighborhood access; MesaCAN clientele

Data-driven analysis to measure program effectiveness

Become a “Hub” for system referrals

System of Referrals from ALL Mesa programs

New Jobs Access Center @ Mesa CAN



Bridge/Transitional Housing



“Transitional Housing at EVMC”

- Specifically, for ‘success cases’ at EVMC
- Transitional housing a key gap in Housing Path to Recovery
- 30 independent, studio apartments at existing campus
- Add 2,000 sf facility for programming and human/health services
- Positive “graduation” model/incentive for men in congregate shelter
- ARPA funds for construction/capital only. Estimating \$6m-\$8m
- Operating costs covered by New Leaf
 - Preliminary discussions with the community

Next Steps

If Council concurs:

- **Off the Streets:** Execute updated agreement with hotel and service provider; continue program implementation.
- **Workforce/Jobs Access Center:** Bring IGA and Lease to Council on Jan. 24. Startup activities and marketing to launch opening in Spring 2022.
- **Transitional Housing at EVMC:** Feasibility Study, site planning, community outreach, updated cost estimate.



JANUARY 13, 2021

SERVICES TO RESIDENTS

Education and Workforce Development Roundtable

RESPONSIVE

Community & Human Services

Stabilization & Upskilling

Workforce/Jobs Access Center "Hub" and Referral Network

Assisting Stabilized Homeless

SUPPORTIVE

Education and Workforce Office

Early Learning to High School

Mesa K-Ready
FASFA Drive

PROGRESSIVE

Education and Workforce Office

Post Secondary Success

Mesa College Promise

COLLABORATION

PARTNERSHIPS

All three areas.

Small Business Technical Assistance; Learning Lab

Collaborations to Upskill and/or Reskill & Provide Workforce Training with:

- Government Agencies
- Businesses
- Educational Institutions
- Non-Profits

SERVICES TO BUSINESSES

TARGETED

Economic Development

Sustainable Pipeline to Existing Businesses & Industries

Healthcare
Education
Aerospace
Technology
Tourism

GROWTH

Economic Development

Business Attraction, Emerging Technologies & Start-Ups

Responsive to emergent hiring & skills needs