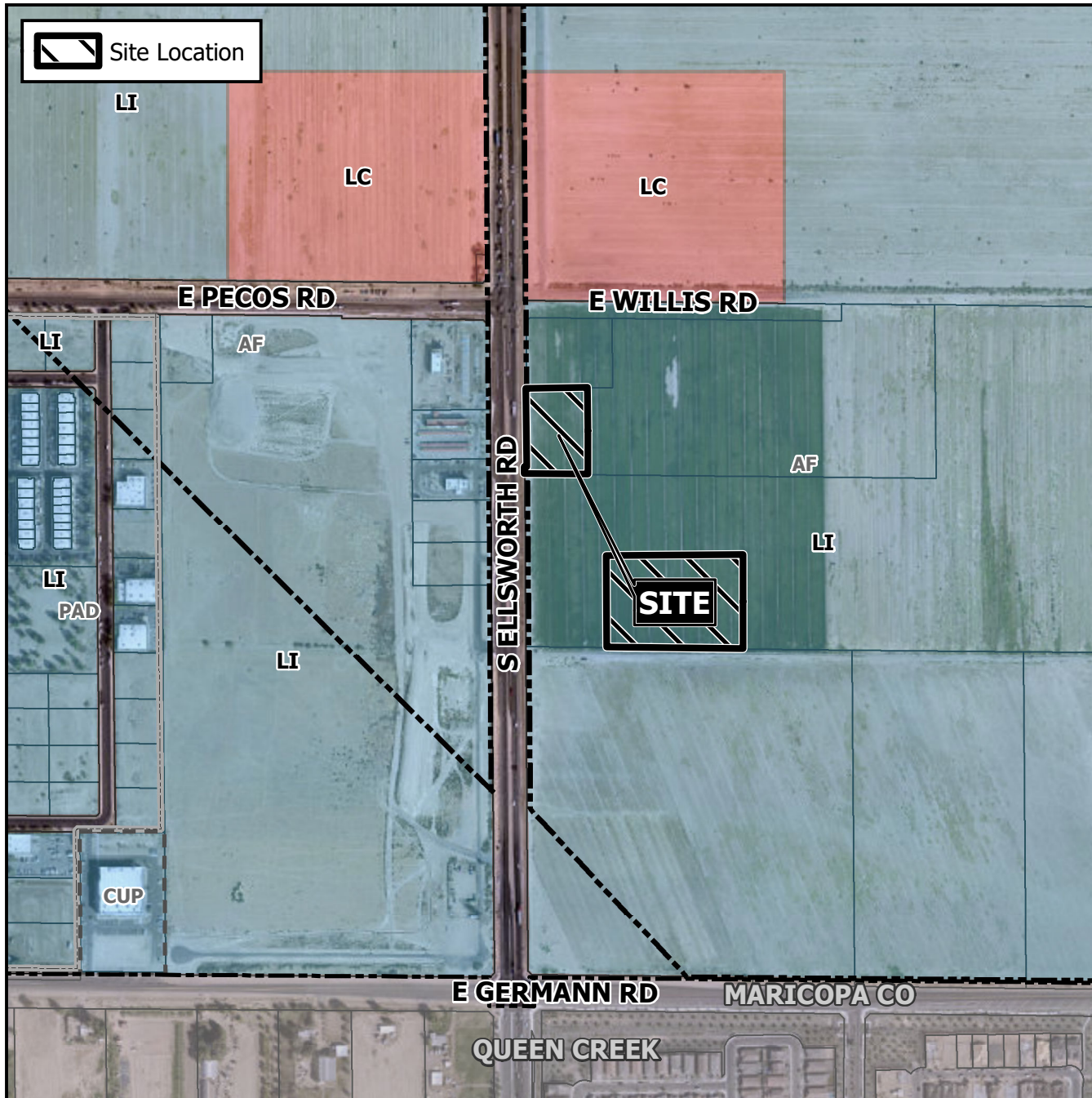


# Planning and Zoning Vicinity Map: ZON20-00139

## Case Details



### CASE:

ZON20-00139

PRE-PLAT : ☐

### SITE / ADDRESS:

District 6. Within the 7200 to 7400 blocks of South Ellsworth Road (east side). Located south of Pecos Road on the east side of Ellsworth Road. (6± acres).

### REQUEST:

Site Plan Review. This request will allow for commercial retail development and self-storage facility.

