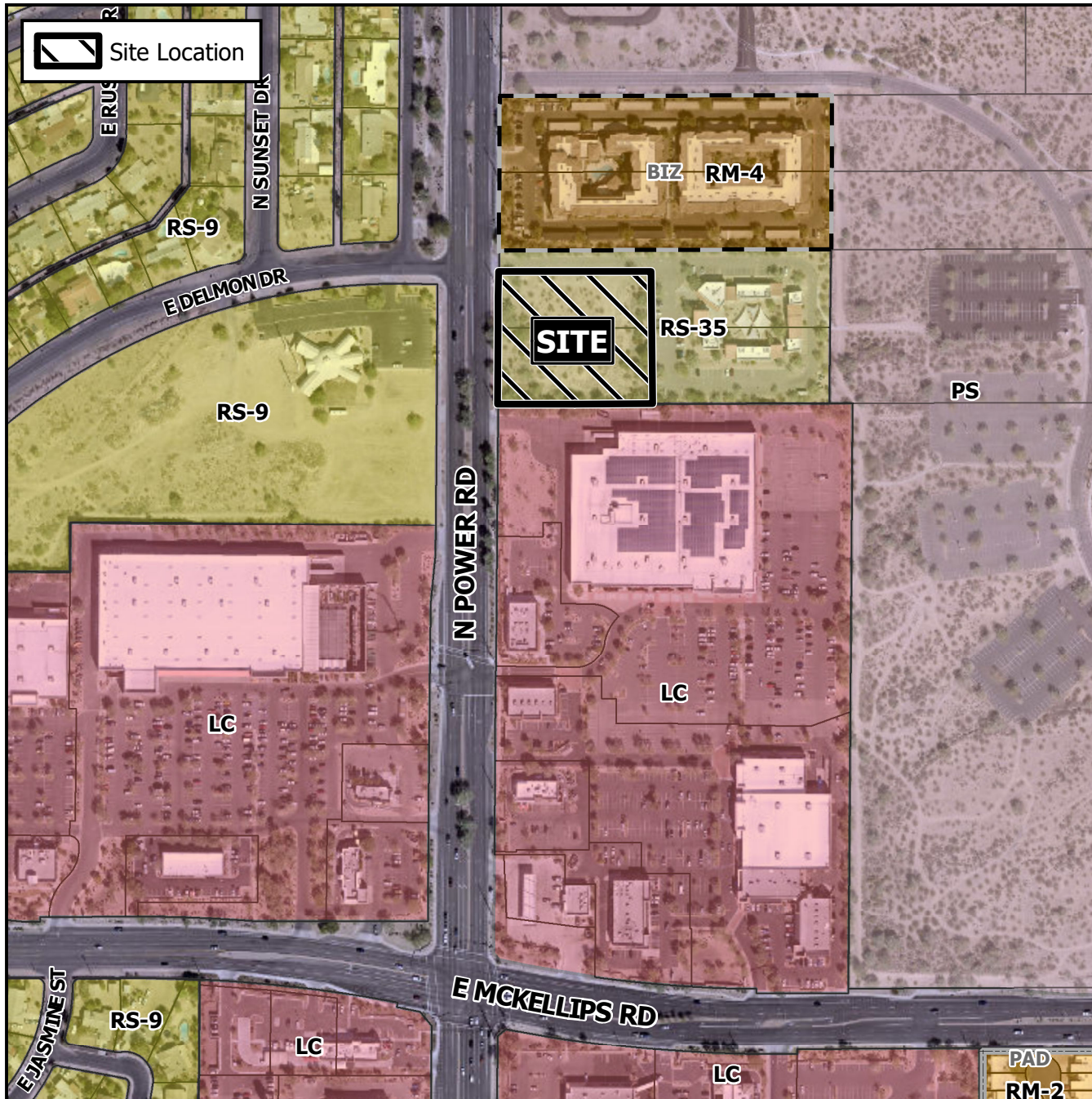


Planning and Zoning Vicinity Map: ZON21-01025



Case Details

CASE:

ZON21-01025

PRE-PLAT : ☐

SITE / ADDRESS:

District 5. Within the 2100 block of North Power Road (east side). Located north of McKellips Road on the east side of Power Road. (2.3± acres).

REQUEST:

Rezone from Residential 35 (RS-35) to Limited Commercial (LC). This request will establish commercial zoning for future development.



0 250 500
Feet

