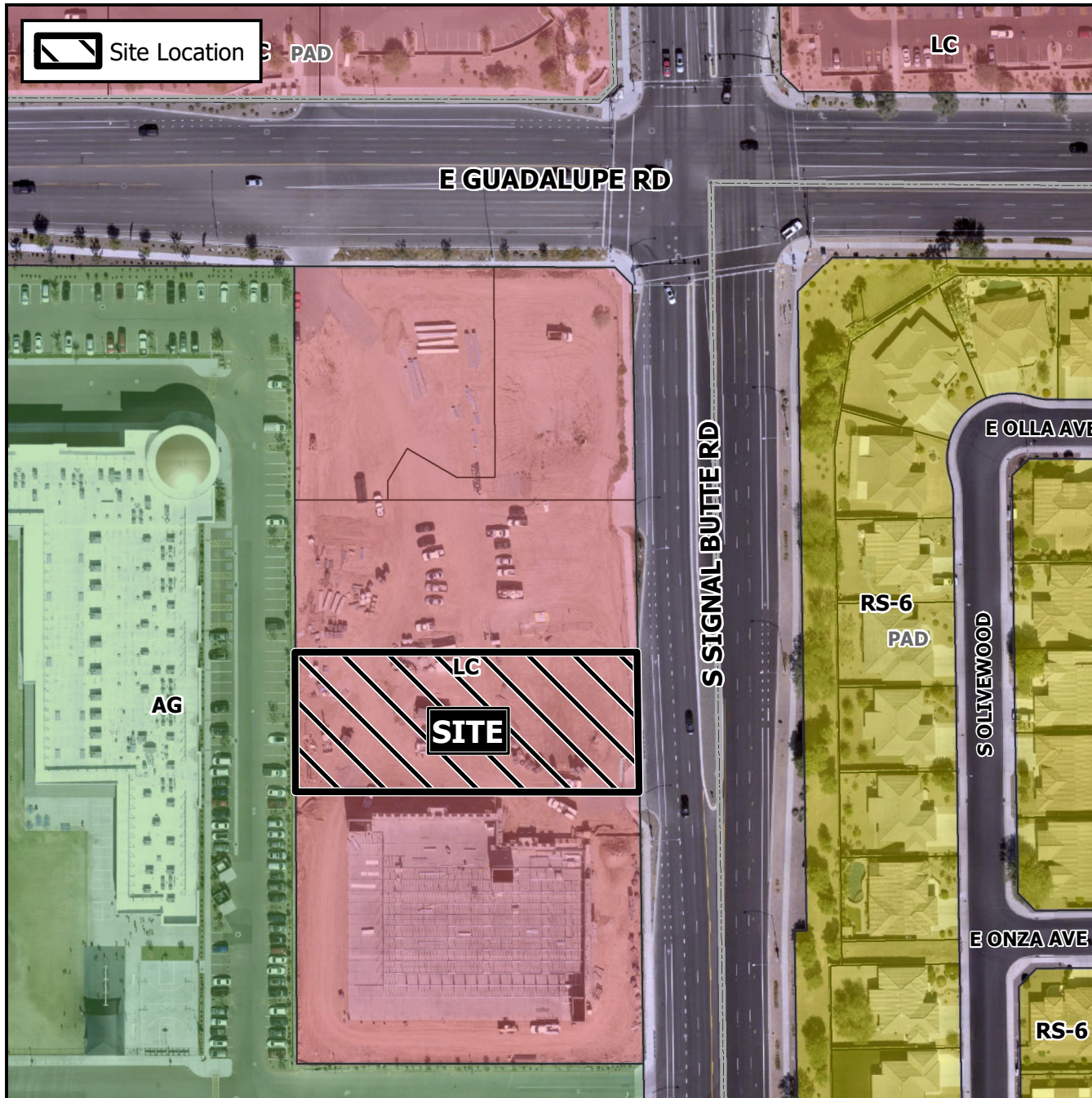


# Design Review Vicinity Map: DRB21-00615



## Case Details

### Case:

DRB21-00615

### Site / Address:

District 6. Within the 2800 block of South Signal Butte Road (west side). Located south of Guadalupe Road on the west side of Signal Butte Road. (1± acres)

### Request:

Requesting review of a drive-thru restaurant.

