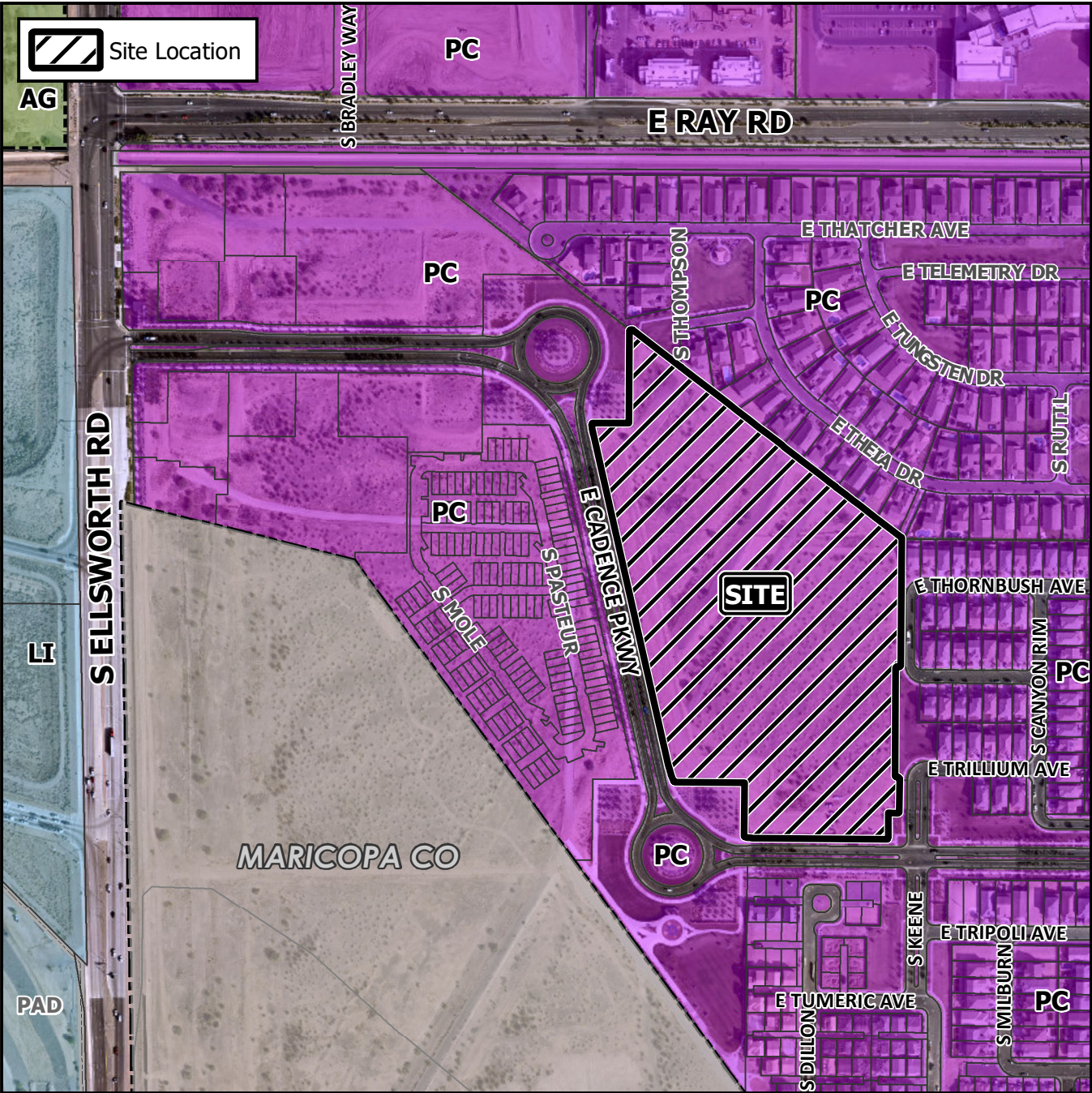


**Board of Adjustment Vicinity Map: BOA21-01149**



## Case Details

**Case:**  
BOA21-01149

BOA21-01149

**Site / Address:**  
District 6. 9410 E. Cadence Parkway.

District 6. 9410 E. Cadence Parkway.

**Request:**  
Requesting a Special Use Permit (SUP) to

Requesting a Special Use Permit (SUP) to allow a Comprehensive Sign Plan (CSP) for a multiple residence development in the Planned Community (PC) District.



A horizontal number line representing distance in feet. It starts at 0 on the left and ends at 500 on the right. There are major tick marks labeled 0, 250, and 500. Between each major tick mark, there are four smaller, unlabeled tick marks, dividing each 250-foot segment into five 50-foot segments. The word "Feet" is written below the line.

