

Utility Capital Improvement Program

FY 2025-2029

April 11, 2024

Brian A. Ritschel – Office of Management and Budget Director

Billie Schomer – Office of Management and Budget CIP Coordinator

CIP Funding Sources

- **Local Revenues**
- **Grants**
- **Utility Revenue Obligations**
- **Utility Taxable Obligations**

Operations and Maintenance

One-time start up purchases and ongoing costs are reviewed and included in the financial forecast with the completion of a project to ensure the City can meet the operational requirements.

Examples of ongoing:

- Additional staffing for a plant expansion
- Maintenance costs for a plant expansion

Examples of one-time:

- Furniture, fixtures, and equipment
- Vehicles

Current Challenges in CIP

- Cost overruns and delays in receiving construction materials
- Increased cost of labor
- Higher than normal inflation on commodities, services, and contracts
- Keeping up with growth while maintaining current infrastructure

Completed Projects FY 23/24

Energy Resources

- New Services (Eco Mesa*, Nuevas Vistas Ph1, 2nd Ave. Commons, Melody on Main, Residences on 1st Phase 3)
- 6-in Polyethylene Gas Line Hawes Rd., Elliot Rd.
- Gas Line Improvements - Warner Rd. – East Maricopa Floodway to Sossaman Rd.
- Meridian Road Improvements - 12-Inch Gas Line Relocation (Queen Creek to Germann)



*Pictured

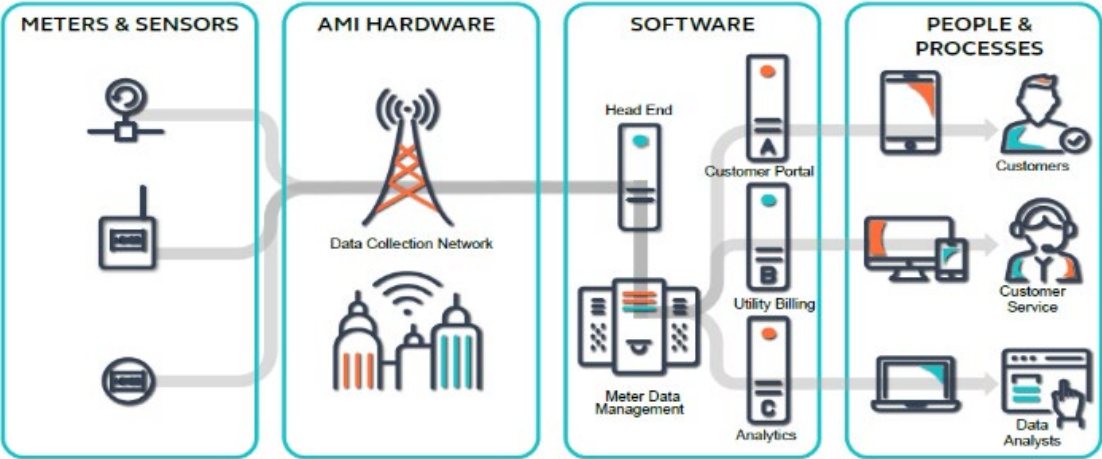
Water Resources

- Brown Rd. Water Treatment Plant City & Supervisory Control and Data Acquisition (SCADA) Fiber Loops
- 24-in Water Transmission Main - Signal Butte Rd.
- Influent Water Flowmeter Replacement (Greenfield Plant)
- Greenfield Water Uninterrupted Power Supply (UPS) Replacements
- Sewer Quarter Section Rehab Quarter Section 44

Completed Projects FY 23/24, Continued

Energy and Water Resources Joint Projects

- Advanced Metering Infrastructure (AMI) Phase 1
 - Project Management
 - Communication Network (Base Stations & Radio Equip.)
 - Data Management System (Software)
 - Meters and Endpoints



Projects Under Construction

Energy Resources

- Queen Creek Gate Station
- Gas Main Replacements Quarter Sections 44B & 44D
- Electric Infrastructure Replacements and System Reliability

Water Resources

- Signal Butte Water Treatment Plant Reservoir Expansion
- Northwest Water Reclamation Plant Solids Stream System Improvements
- Central Mesa Reuse Pipeline Project*

Energy and Water Resources Joint Projects

- AMI Phase 2
 - Facility Improvements



*Pictured

Projects to be Initiated FY 24/25



*Pictured



Energy Resources

- Rogers Security Project w/SRP
- New Electric Services:
 - Mesa General Hospital Site
 - Zen City
 - The Edge on Main

Water Resources

- Quarter Section 21D Southwest Corner of Country Club Dr. & Main St.
- Water Transmission Main Improvements
 - Desert Sage
 - Adobe St./Brown Rd.
 - Center Street

Solid Waste

- Downtown Trash Compactors*

Lifecycle Purchases

- Vehicle Replacements
- Solid Waste Tablet Project*
- Large Water Meter Replacements
- Compliance Lab Equipment



*Pictured



mesa·az