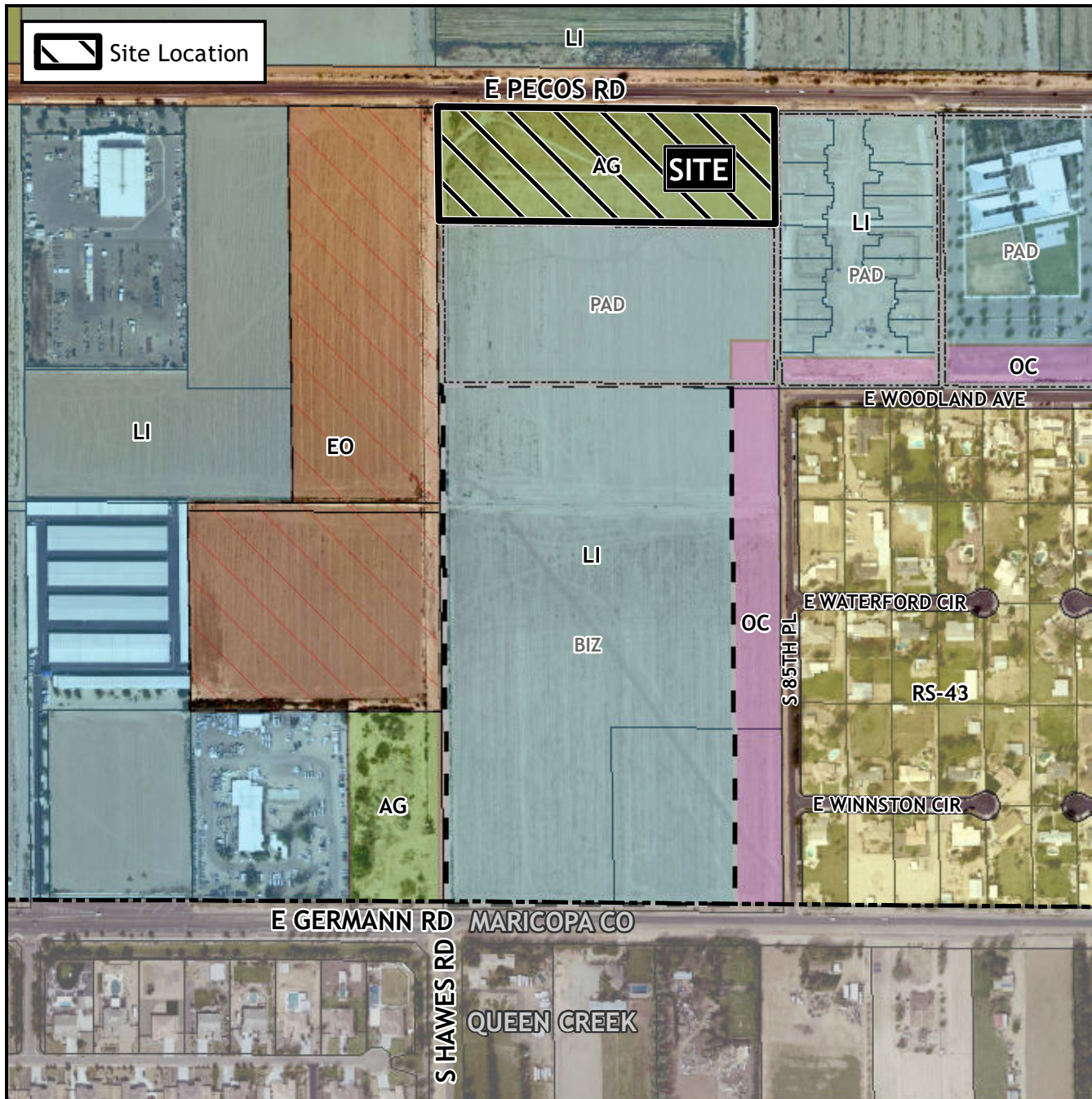


Planning and Zoning Vicinity Map: ZON22-00481



Case Details

CASE:

ZON22-00481

PRE-PLAT : ☐

SITE / ADDRESS:

District 6. Within the 8400 to 8500 blocks of East Pecos Road (south side), and the 7200 block of South Hawes Road (east side). Located south of Pecos Road and east of Hawes Road (9± acres).

REQUEST:

Rezone from Agriculture (AG) to Light Industrial (LI), Site Plan Review; and Special Use Permit. This request will allow for an industrial development.

