

# ELECTRICAL SYMBOLS

NOTE: NOT ALL SYMBOLS ARE USED.

- WALL LIGHT/OUTLET FIXTURE. UPPER CASE LETTER WITH NUMBER INDICATES TYPE. SEE LIGHT FIXTURE SCHEDULE FOR TYPE. LOWER CASE LETTER INDICATES SWITCHING. NUMBER INDICATES BRANCH CIRCUIT(S).
- DOWN LIGHT FIXTURE. UPPER CASE LETTER WITH NUMBER INDICATES TYPE. SEE LIGHT FIXTURE SCHEDULE FOR TYPE. LOWER CASE LETTER INDICATES SWITCHING. NUMBER INDICATES BRANCH CIRCUIT(S).
- WALL WASH LIGHT FIXTURE. UPPER CASE LETTER WITH NUMBER INDICATES TYPE. SEE LIGHT FIXTURE SCHEDULE FOR TYPE. LOWER CASE LETTER INDICATES SWITCHING. NUMBER INDICATES BRANCH CIRCUIT(S).
- LIGHT FIXTURE. UPPER CASE LETTER WITH NUMBER INDICATES TYPE. SEE LIGHT FIXTURE SCHEDULE FOR TYPE. LOWER CASE LETTER INDICATES SWITCHING. NUMBER INDICATES BRANCH CIRCUIT(S).
- TRACK LIGHTING SYSTEM. TRIANGLES DENOTE TRACK HEADS. UPPER CASE LETTER WITH NUMBER INDICATES TYPE. SEE LIGHT FIXTURE SCHEDULE FOR TYPE. LOWER CASE LETTER INDICATES SWITCHING. NUMBER INDICATES BRANCH CIRCUIT(S).
- EMERGENCY LUMINAIRE. EMERGENCY LUMINAIRE IS EITHER CONNECTED TO A LIFE SAFETY GENERATOR SYSTEM, INVERTER, OR BATTERY PACK. UPPER CASE LETTER WITH NUMBER INDICATES TYPE, WHERE AN "E" OR "G" ALSO DENOTES AN EMERGENCY LUMINAIRE. LOWER CASE LETTER INDICATES SWITCHING CONTROL. THE "N" ANNOTATION DENOTES THE LUMINAIRE SHALL NOT BE CONTROLLED AND SHALL ALWAYS BE ON. EMERGENCY LUMINAIRE SHALL NOT BE SWITCHED OFF, BUT MAY BE DIMMED TO A MINIMUM OF ONE FOOT CANDLE AT FINISHED FLOOR, UNO.
- EXIT SIGN. SHADED PORTION INDICATES FACE OF SIGN. SEE LIGHT FIXTURE SCHEDULE.
- EMERGENCY LIGHT BATTERY PACK WITH TWIN LAMP HEADS. SEE LIGHT FIXTURE SCHEDULE.
- JUNCTION BOX IN ACCESSIBLE LOCATION ABOVE CEILING WITH FLEXIBLE CONDUIT CONNECTION TO LIGHT FIXTURE.
- JUNCTION BOX IN ACCESSIBLE LOCATION.
- SINGLE POLE SWITCH.
- TWO (2) POLE SWITCH.
- THREE-WAY SWITCH.
- SINGLE POLE LOW VOLTAGE 3-BUTTON DIMMER SWITCH. REFER TO LIGHTING SUBMITTAL.
- SINGLE POLE SWITCH WITH "ON" PILOT LIGHT.
- KEY OPERATED SWITCH.
- MOTOR RATED, 1HP, TOGGLE SWITCH WITH RED PILOT LIGHT AND THERMAL OVERLOAD RELAY. REFER TO BRANCH CIRCUIT FOR VOLTAGE. EQUAL TO SQUARE D CLASS 2510 TYPE F MANUAL SWITCH. NEMA 3R WHERE OUTSIDE.
- FLEXIBLE CONDUIT CONNECTION TO EQUIPMENT. "WP" INDICATES LIQUID TIGHT AND WEATHERPROOF COVER.
- SINGLE RECEPTACLE. SLASH LINE INDICATES MOUNTING IS ABOVE A COUNTER.
- DUPLEX RECEPTACLE. SLASH LINE INDICATES MOUNTING IS ABOVE A COUNTER.
- FOURPLEX RECEPTACLE. SLASH LINE INDICATES MOUNTING IS ABOVE A COUNTER.
- ISOLATED GROUND DUPLEX RECEPTACLE. SLASH LINE INDICATES MOUNTING IS ABOVE A COUNTER.
- ISOLATED GROUND FOURPLEX RECEPTACLE. SLASH LINE INDICATES MOUNTING IS ABOVE A COUNTER.
- HALF-SWITCHED RECEPTACLE. SLASH LINE INDICATES MOUNTING IS ABOVE A COUNTER.
- DUPLEX RECEPTACLE WITH INTEGRAL USB CHARGER PORTS. SLASH LINE INDICATES MOUNTING IS ABOVE A COUNTER.
- RECESSED FLOOR OUTLET WITH DEVICE SYMBOLIZED. PROVIDE DEVICE PLATE AND CARPET FLANGE, IN CARPETED AREAS. PROVIDE TELEPHONE AND DATA OUTLETS SHALL HAVE MIN. 1" C. WITH PULL STRINGS STUBBED UP INTO ACCESSIBLE CEILING SPACE. PROVIDE CONDUIT BUSHINGS ABOVE CEILING.
- SPECIAL PURPOSE RECEPTACLE WITH NEMA CONFIGURATION NOTED, I.E.: 6-50, 15-20, ETC.
- MULTI OUTLET ASSEMBLY. PROVIDE RECEPTACLES AS NOTED. PROVIDE ALL COMPONENTS REQUIRED FOR A COMPLETE AND OPERATIONAL SYSTEM.
- NOTE: REFER TO ABBREVIATIONS FOR RECEPTACLE SUBSCRIPTS.
- DATA OUTLET. SLASH LINE INDICATES MOUNTING IS ABOVE A COUNTER. PROVIDE SINGLE GANG MUD RING IN WALL AND 3/4" CONDUIT WITH PULL STRING UP INTO ACCESSIBLE CEILING SPACE U.N.O. PROVIDE CONDUIT BUSHING ABOVE CEILING.
- TELEPHONE OUTLET. SLASH LINE INDICATES MOUNTING IS ABOVE A COUNTER. "P" INDICATES PAYPHONE PROVIDE #6 CU GROUND PER NEC #800. PROVIDE SINGLE GANG MUD RING IN WALL AND 3/4" CONDUIT WITH PULL STRING INTO ACCESSIBLE CEILING SPACE U.N.O. PROVIDE CONDUIT BUSHING ABOVE CEILING.
- DATA AND COMMUNICATIONS JACK. SLASH LINE INDICATES MOUNTING IS ABOVE A COUNTER. PROVIDE SINGLE GANG MUD RING IN WALL AND 3/4" CONDUIT WITH PULL STRING INTO ACCESSIBLE CEILING SPACE U.N.O. PROVIDE CONDUIT BUSHING ABOVE CEILING.
- 4"x4"x3/4" THICK FIRE RATED TELEPHONE BOARD. MOUNT AT 6" BELOW CEILING. PROVIDE #6 SOLID CU GROUND PER NEC #800.
- TELEPHONE TERMINAL CABINET. NEMA 3R HINGED DOOR. COORDINATE SIZE WITH SERVING UTILITY. PROVIDE #6 SOLID CU GROUND PER NEC #800-100.
- HEAVY DUTY DISCONNECT SWITCH. HORSEPOWER, VOLTAGE AND PHASE RATED. FUSED UNLESS NOTED "NF" (NON FUSED). SIZE FUSES PER EQUIPMENT MANUFACTURES NAMEPLATE RECOMMENDATIONS. PROVIDE NEMA 3R WHERE OUTSIDE.
- WALL MOUNTED SPEAKER. REFER TO ELECTRICAL DRAWINGS FOR ADDITIONAL REQUIREMENTS.
- WALL MOUNTED CLOCK. REFER TO ELECTRICAL DRAWINGS FOR ADDITIONAL REQUIREMENTS.
- AC MAGNETIC MOTOR STARTER. HORSEPOWER, VOLTAGE AND PHASE RATED. NUMBER OF POLES AS REQUIRED. FURNISH WITH (1) N.O./N.C. FIELD CONVERTIBLE AUXILIARY CONTACT AND 120V. CONTROL COIL. SINGLE SPEED NON-REVERSING U.N.O PROVIDE NEMA 3R WHERE OUTSIDE.
- AC MOTOR STARTER. NEMA SIZE AS NOTED ON ONE-LINE DIAGRAM. PROVIDE NEMA-3R WHERE REQUIRED.

- CIRCUITS IN CONDUIT CONCEALED IN FLOOR OR BELOW GRADE.
- CIRCUITS IN CONDUIT CONCEALED IN WALLS OR ABOVE CEILING.
- HOMERUN TO PANELBOARD OR AS NOTED.
- CONDUIT STUB-OUT. CAP AND MARK FOR FUTURE USE.
- CONDUIT STUB-UP.
- PANELBOARD. SURFACE OR FLUSH AS SCHEDULED.
- MOTOR. SIZE AND RATING AS SHOWN. "EF" INDICATES 150 WATT EXHAUST FAN.
- TELEVISION OUTLET. SLASH LINE INDICATES MOUNTING IS ABOVE COUNTER. PROVIDE 3/4" C. WITH PULL STRING UP INTO ACCESSIBLE CEILING SPACE U.N.O. PROVIDE CONDUIT BUSHING ABOVE CEILING.
- COMBINATION POWER/DATA POLE. ALL POWER CONNECTIONS BY ELECTRICAL CONTRACTOR.
- PROVIDE SYSTEM FURNITURE POWER AND VOICE/DATA ACCESS FEEDS. PROVIDE SINGLE GANG MUDRING WITH PULL TAPE TO ACCESSIBLE CEILING SPACE FOR VOICE/DATA CABLING TO SYSTEM FURNITURE, UNO. MAKE FINAL CONNECTIONS AS REQUIRED.

HACHURES INDICATE NUMBER OF PHASE AND NEUTRAL CONDUCTORS LESS EQUIPMENT AND ISOLATED GROUNDS. WHERE NO HACHURES ARE SHOWN PROVIDE 2 #12 CU, 1 #12 CU BOND. WHERE WIRE IS NOTED ON HOMERUN TO BE LARGER THAN #12, PROVIDE SIZE WIRE AND CONDUIT INDICATE FOR ENTIRE LENGTH OF CIRCUIT. MINIMUM CONDUIT SIZE IS 3/4". PROVIDE A BOND WIRE SIZED PER NEC 250 IN ALL RACEWAYS. GROUND, BOND WIRES AND ISOLATED GROUND WIRES ARE NOT NORMALLY SHOWN ON THE DRAWINGS.

# GENERAL NOTES

1. PRIOR TO ROUGH-IN AND FINAL CONNECTION, VERIFY ELECTRICAL CHARACTERISTICS AND EXACT LOCATION OF EQUIPMENT.
2. COORDINATE THE SCHEDULE OF CONSTRUCTION WITH THE OWNER AND OTHER TRADES (PRIOR TO STARTING ANY WORK).
3. GROUT AND SEAL ALL CONDUIT PENETRATIONS OF WALLS AND FLOOR SLABS TO PRESERVE FIRE RATING AND WATERTIGHT INTEGRITY.
4. DRAWINGS SHOW EXISTING CONDITIONS OF THE SITE. AN ATTEMPT HAS BEEN MADE TO SHOW EXISTING BUILDINGS, DETAILS, ETC., BUT ACCURACY CANNOT BE GUARANTEED. VERIFY EXACT LOCATIONS OF ALL CIRCUITS, CONDUIT, PIPING, EQUIPMENT, ETC. VERIFY ALL BUILDING DETAILS.
5. SEE SPECIFICATIONS, DRAWING Exx, FOR ADDITIONAL REQUIREMENTS.
6. THE OWNER WILL OCCUPY THE EXISTING BUILDING DURING THE LIFE OF THIS CONTRACT AND ALL WORK SHALL BE SCHEDULED AT SUCH TIME AND IN SUCH A MANNER TO MINIMIZE INTERFERENCE AND INCONVENIENCE TO THE OWNER. THE ELECTRICAL CONTRACTOR MUST OBTAIN THE APPROVAL OF THE CONSTRUCTION MANAGER OR OWNER BEFORE STARTING ANY WORK WITHIN THE EXISTING BUILDING.
7. EXISTING POWER OR LIGHTING CIRCUITS WHICH POWER DEVICES IN OTHER AREAS, AS WELL AS DEVICES IN THE DEMOLITION AREA (IF ANY), SHALL BE DISCONNECTED FOR AS SHORT A TIME AS NECESSARY. VERIFY WITH SITE PERSONNEL PRIOR TO THE DISCONNECTION OF ANY CIRCUITS.
8. IF ANY EXISTING CIRCUIT CANNOT BE IDENTIFIED, THE CONTRACTOR SHALL USE A CIRCUIT TRACER TO DETERMINE ITS SOURCE. ARCING TO GROUND IS NOT AN ACCEPTABLE PRACTICE AT THIS FACILITY.
9. AS PART OF TENANT IMPROVEMENT SCOPE OF WORK FOR THIS PROJECT THE ELECTRICAL CONTRACTOR IS RESPONSIBLE FOR COORDINATING WITH THE OTHER TRADES INCLUDING BUT NOT LIMITED TO, MECHANICAL, PLUMBING, FIRE ALARM, ETC FOR THE RELOCATION OF AS NECESSARY ANY ELECTRICAL COMPONENTS THAT CONFLICT WITH THE LOCATIONS OF NEW/RELOCATED EQUIPMENT. THIS MAY INCLUDE RELOCATING ELECTRICAL J-BOXES, RACEWAYS, WIRING, HANGERS, ETC THAT ARE NOT READILY APPARENT OR NOTED ON PLANS. COORDINATE WITH OTHER TRADES FOR THE FULL EXTENT OF THIS WORK AND TO DETERMINE WHICH SYSTEMS CAN BE MODIFIED TO LEAST IMPACT THE OVERALL INSTALLATIONS AND PROJECT COSTS.

# DEMOLITION NOTES

1. ANY ELECTRICAL DEVICE OR EQUIPMENT NOT NOTED TO BE REMOVED OR RELOCATED SHALL REMAIN UNCHANGED. IT SHALL BE THE CONTRACTORS RESPONSIBILITY TO CONTACT THE ARCHITECT/ENGINEER REGARDING ANY ITEM IN QUESTION.
2. WHERE ITEMS ARE NOTED TO BE REMOVED, ELECTRICAL CONTRACTOR SHALL:
  - A) REMOVE INDICATED ITEM.
  - B) REMOVE ANY ASSOCIATED CONDUIT AND WIRING WHERE SURFACE MOUNTED OR ABOVE AN ACCESSIBLE CEILING.
  - C) PULL OUT ASSOCIATED WIRING, CUT OFF, CAP, AND ABANDON CONDUIT WHERE CONCEALED IN WALLS OR PARTITIONS WHICH ARE REMAINING.
  - D) RETURN ALL REMOVED EQUIPMENT TO OWNER OR DISPOSE OF AS DIRECTED BY OWNER.
3. WHERE ELECTRICAL CONTRACTOR REMOVES AN ITEM AND CIRCUITING TO OTHER ITEMS WILL BE INTERRUPTED, ELECTRICAL CONTRACTOR SHALL PROVIDE NEW CONDUIT, WIRE, BOXES, ETC. AS REQUIRED AND RECONNECT REMAINING ITEMS SO THEY WILL NOT BE INTERRUPTED.
4. WHERE AN ITEM IS SHOWN TO BE RELOCATED, ELECTRICAL CONTRACTOR SHALL EXTEND WIRING AND CONDUIT TO THE APPROPRIATE NEW LOCATION AND PROVIDE ALL NECESSARY CONDUIT, WIRE, BOXES, ETC. AS REQUIRED. RECONNECT TO EXISTING CIRCUIT OR RE-CIRCUIT AS SHOWN. IF DEVICE IS NOT SALVAGEABLE, ELECTRICAL CONTRACTOR SHALL PROVIDE A NEW DEVICE.
5. THE FOLLOWING DEMOLITION SYMBOLS MAY BE USED AS WELL AS KEYED NOTES:
  - "R" = NEW LOCATION OF RELOCATED ITEM.
  - "X" = EXISTING ITEM TO REMAIN.
  - "XR" = EXISTING ITEM TO BE REMOVED.
  - "XRP" = EXISTING ITEM TO BE REPLACED WITH NEW IN SAME LOCATION AS SHOWN. EXTEND EXISTING CIRCUIT TO MATCH EXISTING U.N.O.
  - "XRR" = RELOCATE EXISTING ITEM TO NEW LOCATION AS SHOWN. EXTEND EXISTING CIRCUIT TO MATCH EXISTING U.N.O.

# ONE LINE DIAGRAM SYMBOLS

- CURRENT TRANSFORMER.
- UTILITY METER.
- CIRCUIT BREAKER. AMPERE RATING AND # OF POLES INDICATED.
- FUSED SWITCH. AMPERE RATING AND # OF POLES INDICATED.
- FUSED PULL-OUT. AMPERE RATING AND # OF POLES INDICATED.
- INDICATES DRAW-OUT DEVICE.
- FUSE. AMPERE RATING INDICATED. (BUSSMANN DESIGNATION UNO)
- TRANSFORMER, DRY TYPE, PAD PAD MOUNT, WITH KVA, PRIMARY AND SECONDARY VOLTAGE, MINIMUM IMPEDANCE, AND "K" RATING AS NOTED. PROVIDE SEPERATELY DERIVED SOURCE GROUNDING PER NEC 250 SIZE AS NOTED. 150" C RISE UNO.
- MAGNETIC MOTOR STARTER. NEMA SIZE INDICATED. PROVIDE WITH OPTIONAL FEATURES SCHEDULED.
- GROUND. SIZE GROUNDING PER THE LATEST ADOPTED NATIONAL ELECTRICAL CODE. UNO
- CONDUCTOR TERMINATION POINT.
- BOND TO STRUCTURAL STEEL. SIZE AS NOTED.
- BOND TO GAS, WATER, FIRE SPRINKLER PIPING SYSTEMS. SIZE AS NOTED.

MARK	MANUFACTURER	CATALOG NUMBER	DESCRIPTION	LAMPS	VOLTAGE	INPUT WATTAGE	MOUNTING	NOTES
S1	LITHONIA	DSX1 LED P5 30K 70CRI T1S / SSS 22.5' POLE WITH 2.' BASE	D-SERIES SIZE 1 AREA LUMINAIRE P5 PERFORMANCE PACKAGE 3000K CCT 70 CRI TYPE 1 SHORT	LED 3000K	277	138	POLE	
S2	LITHONIA	DSX1 LED P6 30K 70CRI T5W / SSS 22.5' POLE WITH 2.' BASE	D-SERIES SIZE 1 AREA LUMINAIRE P6 PERFORMANCE PACKAGE 3000K CCT 70 CRI TYPE 5 WIDE	LED 3000K	277	165	POLE	
S2T	LITHONIA	DSX1 LED P6 30K 70CRI T5W / SSS 22.5' POLE WITH 2.' BASE TWO HEADS	D-SERIES SIZE 1 AREA LUMINAIRE P6 PERFORMANCE PACKAGE 3000K CCT 70 CRI TYPE 5 WIDE	LED 3000K	277	331	POLE	
S3	LITHONIA	DSX1 LED P5 30K 70CRI T4M HS / SSS 22.5' POLE WITH 2.' BASE	D-SERIES SIZE 1 AREA LUMINAIRE P5 PERFORMANCE PACKAGE 3000K CCT 70 CRI TYPE 4 MEDIUM SHIELD	LED 3000K	277	138	POLE	
S4	LITHONIA	DSX1 LED P5 30K 70CRI T2M / SSS 22.5' POLE WITH 2.' BASE	D-SERIES SIZE 1 AREA LUMINAIRE P5 PERFORMANCE PACKAGE 3000K CCT 70 CRI TYPE TYPE 2 MEDIUM	LED 3000K	277	138	POLE	
S5	LITHONIA	DSX2 LED P5 30K 70CRI TFTM HS / SSS 22.5' POLE WITH 2.' BASE	D-SERIES SIZE 2 AREA LUMINAIRE P5 PERFORMANCE PACKAGE 3000K CCT 70 CRI FORWARD THROW SHIELD	LED 3000K	277	327	POLE	
S6	LITHONIA	DSX2 LED P5 30K 70CRI BLC4 / SSS 22.5' POLE WITH 2.' BASE	D-SERIES SIZE 2 AREA LUMINAIRE P5 PERFORMANCE PACKAGE 3000K CCT 70 CRI TYPE 4 EXTREME	LED 3000K	277	327	POLE	
S7	LITHONIA	DSX2 LED P5 30K 70CRI TFTM WBA	D-SERIES SIZE 2 AREA LUMINAIRE P5 PERFORMANCE PACKAGE 3000K CCT 70 CRI FORWARD THROW	LED 3000K	277	327	SURFACE	
S8	LITHONIA	DSX2 LED P5 30K 70CRI T4M WBA	D-SERIES SIZE 2 AREA LUMINAIRE P5 PERFORMANCE PACKAGE 3000K CCT 70 CRI TYPE 4 MEDIUM	LED 3000K	277	327	SURFACE	
S9	LITHONIA	WDGE3 LED P3 70CRI RFT 30K	WDGE3 LED WITH P3 - PERFORM PACKAGE, 3000K, 70CRI, FORWARD THROW OPTIC	LED 3000K	277	71	SURFACE	
S10	NLS LIGHTING	ORX-B-T3-16L-1-30K7	ORX-1-BOLLARD T3 NICHIA LED	LED 3000K	277	55	BASE	
S11	LITHONIA	LDN4 30/10 L04AR LSS WL	4IN LDN, 3000K, 1000LM, CLEAR, SEMI-SPECULAR REFLECTOR, 80CRI	LED 3000K	277	11	RECESSED	

# LUMINAIRE SCHEDULE GENERAL NOTES

1. ELECTRICAL CONTRACTOR SHALL VERIFY MOUNTING DETAILS OF ANY ATYPICAL LIGHT FIXTURES.
2. ELECTRICAL CONTRACTOR SHALL VERIFY FINAL LUMINAIRE SELECTION WITH ARCHITECT AND GENERAL CONTRACTOR. NOTIFY ELECTRICAL ENGINEER WITH ANY LAMP WATTAGE CHANGES.
3. ALL MOUNTING HEIGHTS NOTED IN SCHEDULE SHALL BE TO THE BOTTOM OF THE LUMINAIRE. PROVIDE PENDANT, CABLE, OR POLE LENGTHS TO ACHIEVE THE NOTED MOUNTING HEIGHT AND CENTER WALL MOUNTED LUMINAIRES AND ASSOCIATED JUNCTION BOX ACCORDINGLY.
4. REFER TO ARCHITECTURAL PLANS FOR EXACT MOUNTING HEIGHTS OF ALL WALL MOUNTED LUMINAIRES PRIOR TO FINAL ROUGH-IN.
5. REFER TO ARCHITECTURAL PLANS FOR LUMINAIRE LENGTHS FOR CONTINUOUS RUNS.
6. VERIFY MOUNTING TYPE AND DIRECTIONAL CHEVRONS OF EXIT SIGNS WITH DRAWINGS PRIOR TO ORDERING.
7. ALTERNATE LIGHTS SHALL BE PROVIDED WITH PHOTOMETRIC EQUALS THAT INCLUDE TUNABLE WHITE FIXTURES AS NOTED, NO EXCEPTIONS.



CawleyArchitects.com

KOMATSU SALES AND SERVICE FACILITY

9927 E. PECOS ROAD MESA ARIZONA 85212

DATE  
 PRE-SUBMITTAL 03-04-2024  
 DR SUBMITTAL 05-27-2024  
 SUP SUBMITTAL 05-27-2024  
 DR/SUP 2nd SUBMITTAL 07-15-2024

DRAWN BY: JD & JS

OWNERSHIP OF DOCUMENTS:  
 The drawings, including the architectural concept, design, and data, is an instrument of service and shall remain the property of Cawley Architects Inc. This drawing is for use at the location described herein and shall not be used in other locations. Any other use or reliance of these drawings may result in civil damages.

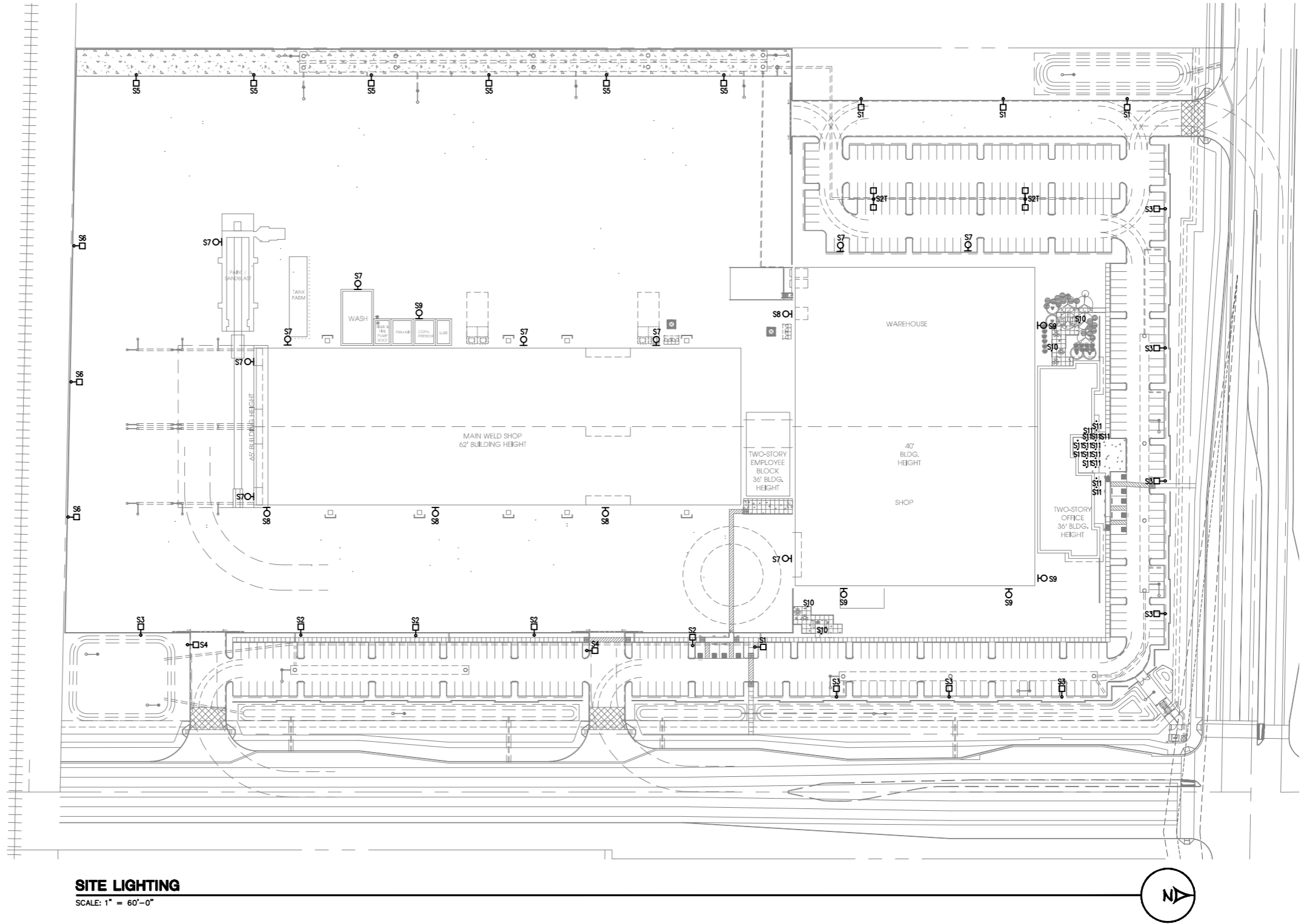
DISCREPANCIES AND CONFLICTS:  
 All discrepancies found in these documents or conflicts between these documents and field conditions shall be reported to Cawley Architects Inc. for resolution before the commencement of the work.

ELECTRICAL NOTES AND SPECIFICATIONS

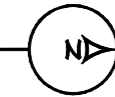
Project: 23071  
 E.O.O







**SITE LIGHTING**  
SCALE: 1" = 60'-0"



**ENERGY SYSTEMS DESIGN**  
7135 East Camelback Road  
Suite 275  
Scottsdale, AZ 85261  
P: 480.481.4900  
www.esdesigners.com

Design Contact:  
**WILLIAM REYES**

Project #  
241XXX

**CAWLEY ARCHITECTS**  
730 N. 52nd St. Ste. 203  
Phoenix, Arizona 85008  
P 602.393.5060  
CawleyArchitects.com

**PRELIMINARY  
(NOT FOR  
CONSTRUCTION)**

**KOMATSU  
SALES AND  
SERVICE  
FACILITY**

9927  
E. PECOS ROAD  
MESA  
ARIZONA  
85212

**DATE**

PRE-SUBMITTAL	03-04-2024
DR SUBMITTAL	05-27-2024
SUP SUBMITTAL	05-27-2024
DR/SUP 2nd SUBMITTAL	07-15-2024

**DRAWN BY:** JD & JS

**OWNERSHIP OF DOCUMENTS:**  
This drawing, including the architectural concept, design, and data, is an instrument of service and shall remain the property of Cawley Architects Inc. This drawing is for use at the location described herein and shall not be used in other locations. Any other use or reliance of these drawings may result in civil damages.

**DISCREPANCIES AND CONFLICTS:**  
All discrepancies found in these documents or conflicts between these documents and their conditions shall be reported to Cawley Architects Inc., for resolution before the commencement of the work.

SITE LIGHTING

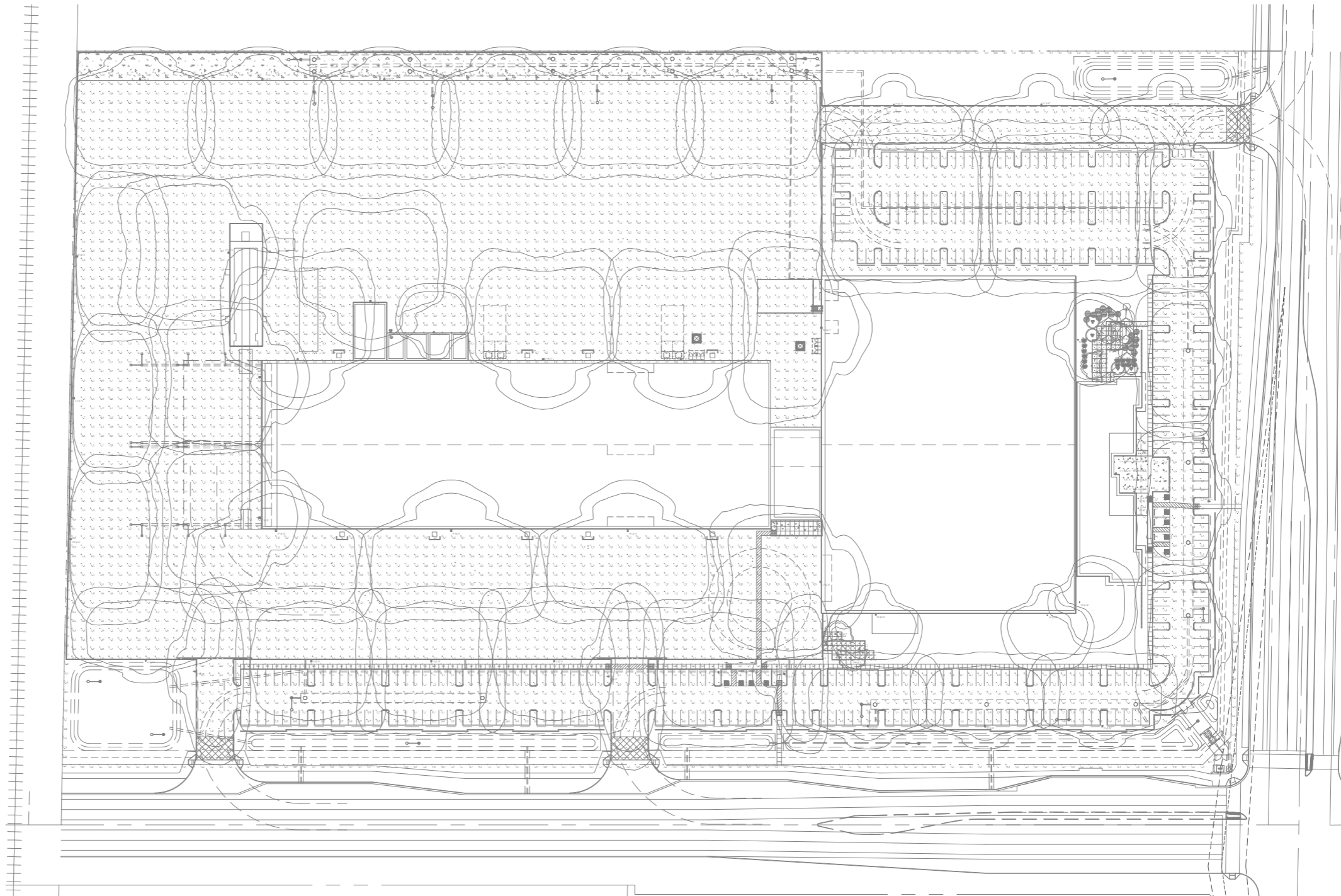
Project: 23071

**E1.0**

FILE: j:\2024\241066 Komatsu\E1\_1.dwg

PLOTTED BY: williamreyes

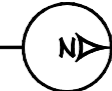
PLOTTED: 07.10.2024 - 3:26pm



### SITE LIGHTING PHOTOMETRIC

SCALE: 1" = 60'-0"

Statistics						
Description	Symbol	Avg	Max	Max/Min	Min	Avg/Min
AMENITY 1	+	6.3 fc	48.1 fc	120.3:1	0.4 fc	15.8:1
AMENITY 2	+	5.3 fc	59.6 fc	198.7:1	0.3 fc	17.7:1
EAST ENTRY	X	8.4 fc	9.5 fc	1.3:1	7.6 fc	1.1:1
NORTH ENTRY	X	6.7 fc	10.0 fc	5.9:1	1.7 fc	3.9:1
PARKING & DRIVES	+	1.2 fc	9.8 fc	49.0:1	0.2 fc	6.0:1
SITE PL FC @ 3' AFG	+	0.0 fc	0.3 fc	N/A	0.0 fc	N/A
YARD	+	1.8 fc	9.2 fc	92.2:1	0.1 fc	16.0:1



**KOMATSU SALES AND SERVICE FACILITY**

9927  
 E. PECOS ROAD  
 MESA  
 ARIZONA  
 85212

DATE
PRE-SUBMITTAL 03-04-2024
DR SUBMITTAL 05-27-2024
SUP SUBMITTAL 05-27-2024
DR/SUP 2nd SUBMITTAL 07-15-2024

DRAWN BY: JD & JS

**OWNERSHIP OF DOCUMENTS:**  
 This drawing, including the architectural concept, design, and data, is an instrument of service and shall remain the property of Cawley Architects Inc. This drawing is for use at the location described herein and shall not be used in other locations. Any other use or reliance of these drawings may result in civil damages.

**DISCREPANCIES AND CONFLICTS:**  
 All discrepancies found in these documents or conflicts between these documents and field conditions shall be reported to Cawley Architects Inc. for resolution before the commencement of the work.

SITE PHOTOMETRIC

**ENERGY SYSTEMS DESIGN**  
 7135 East Camelback Road  
 Suite 275  
 Scottsdale, AZ 85251  
 P: 480.481.4900  
 www.esdesigners.com

Design Contact:  
**WILLIAM REYES**

Project #  
 241XXX

Project: 23071

