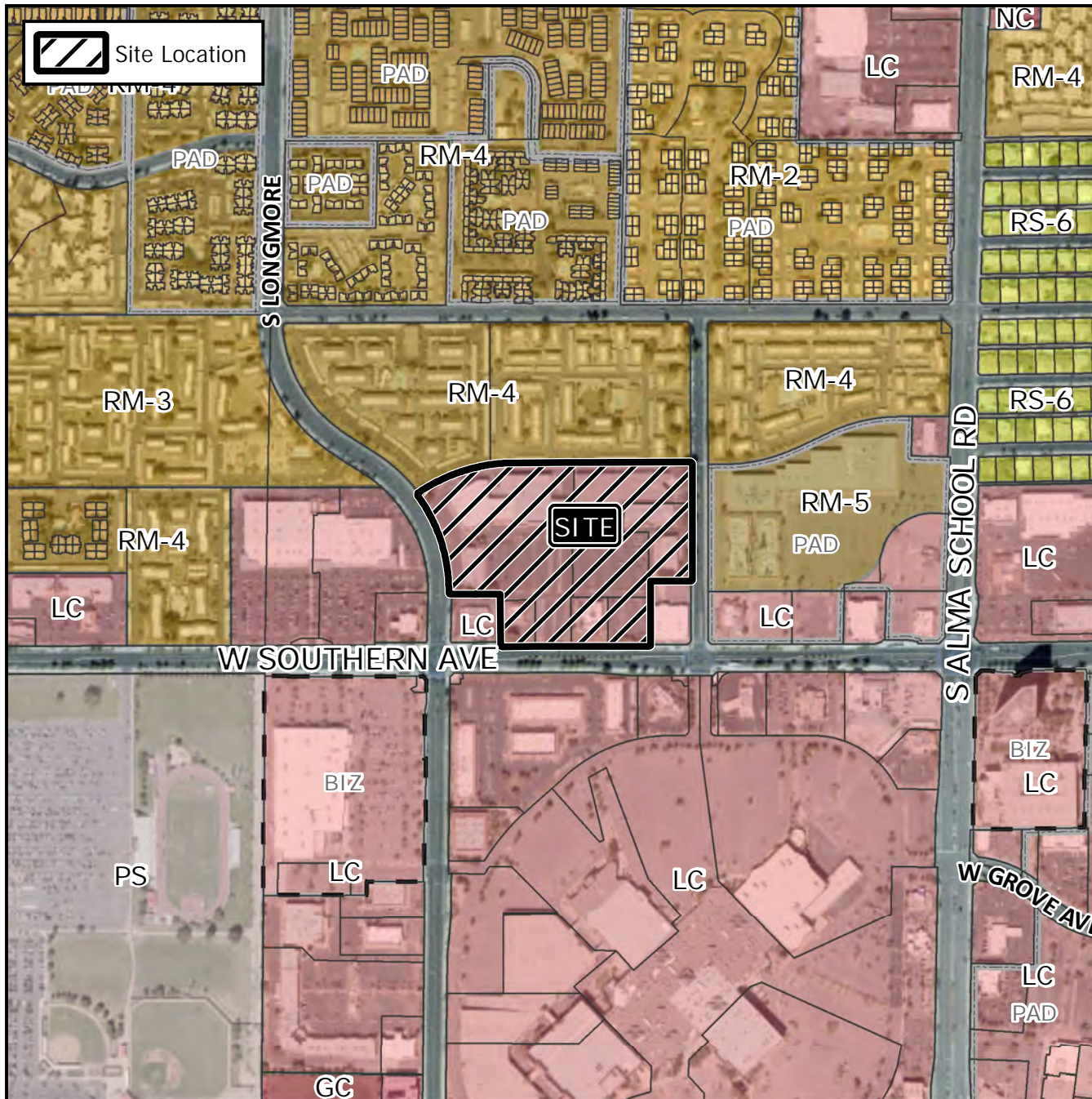


Board of Adjustment Vicinity Map: BOA20-00803

Case Details



Case:

BOA20-00803

Site / Address:

District 3. Within the 1300 to 1400 blocks of West Southern Avenue (north side) and the 1100 block of South Longmore (east side).

Request:

Requesting a Special Use Permit to allow a reduction in the number of required parking spaces associated with a trade school in the LC District.



600

Feet

