

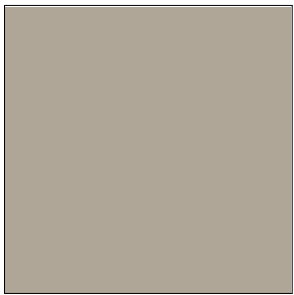
Exterior Finishes



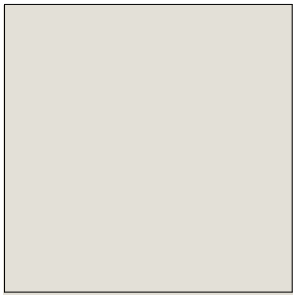
MATERIAL M1
BROWN STANDARD FINISH CMU - 16X8
RUNNING BOND
ECHELON (OLDCASTLE) "PEBBLE" COLOR



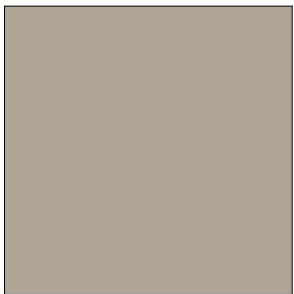
MATERIAL M2
BROWN-GRAY SPLIT FACED CMU
16X8 - ACCENT SINGLE ROW
ECHELON (OLDCASTLE) "GRAY" COLOR



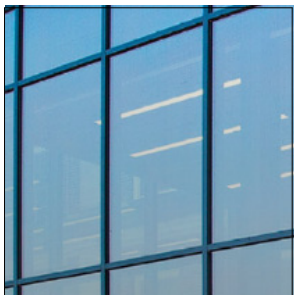
MATERIAL M3
STUCCO - SAND FINISH
SHERWIN WILLIAMS SW7052
"GRAY AREA"
ACCENT WALLS



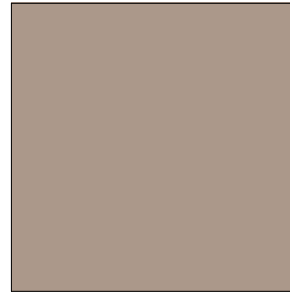
MATERIAL M4
STUCCO - SAND FINISH
SHERWIN WILLIAMS SW7049
"NUANCE"
ENTRY SOFFIT



MATERIAL M5
PAINT - EXTERIOR SEMI-GLOSS
SHERWIN WILLIAMS SW7052
"GRAY AREA"
EXTERIOR METALS



MATERIAL M6
BLACK ANODIZED FRAMES WITH
VITRO SOLARGRAY 1" INSULATED
GLAZING
WINDOWS AND GLAZED DOORS
EXTERIOR LIGHTS TO BE BLACK ANODIZED



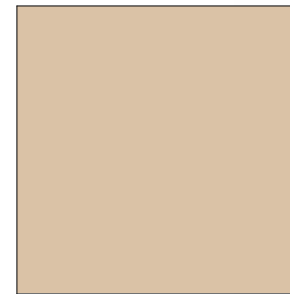
MATERIAL M7
METAL PANEL - CONCEALED FASTENER
16" WITH 1" REVEAL - HORIZONTAL
COLOR TO
ACCENT METAL WALLS
PANEL EXAMPLE BELOW



MATERIAL M8
POURED IN PLACE CONCRETE
STANDARD GRAY CONCRETE
SIDEWALKS AND CURBS



MATERIAL M9
BLACK ANODIZED ACCESSORIES
AND FIXTURES



MATERIAL M10
PAINT - EXTERIOR SEMI-GLOSS
SHERWIN WILLIAMS SW0036
"BUCKRAM BINDING"
EXTERIOR STEEL DOORS