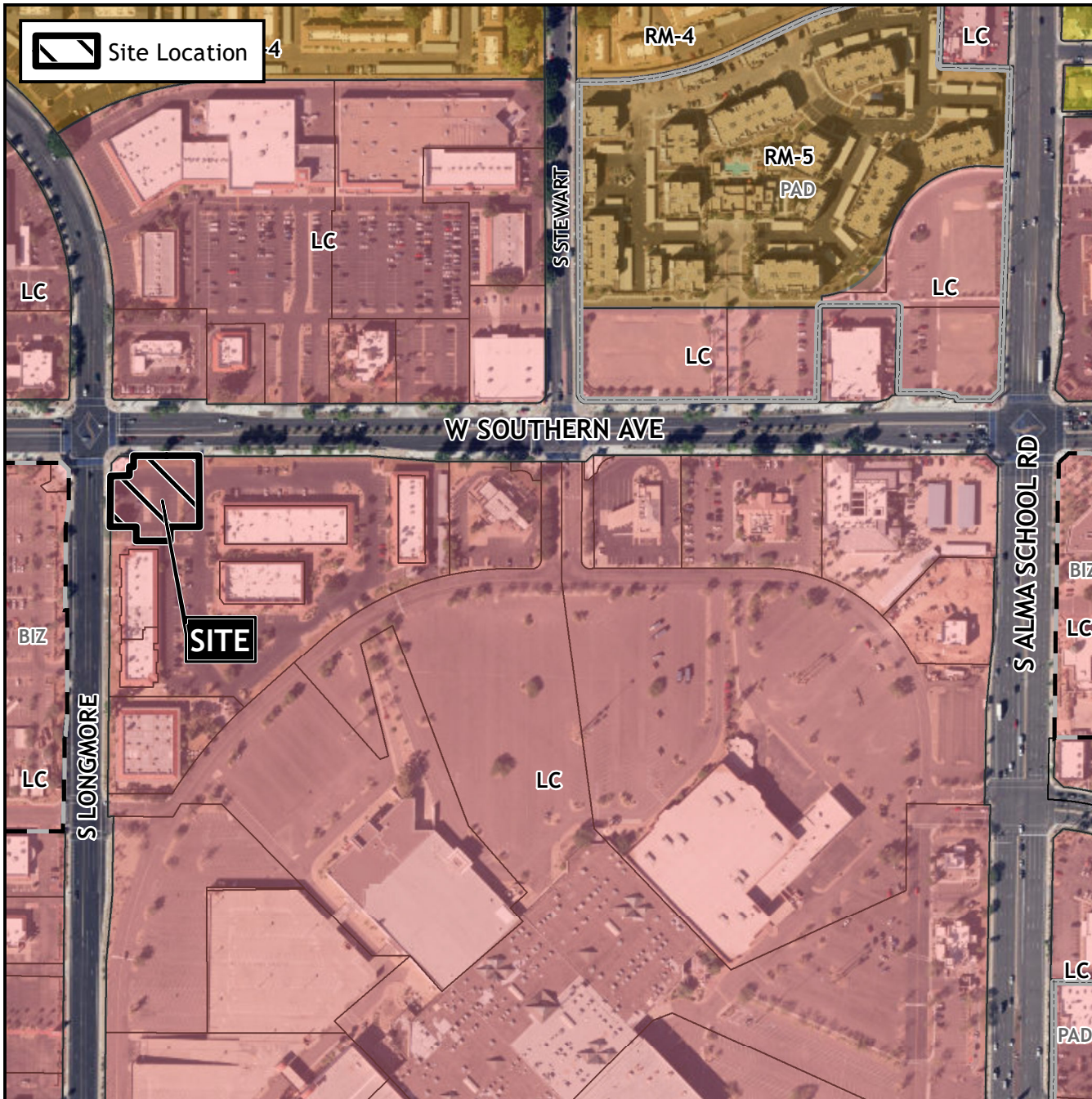


Planning and Zoning Vicinity Map: ZON23-00221



Case Details

CASE:

ZON23-00221

PRE-PLAT :

SITE / ADDRESS:

(District 3). Within the 1200 block of South Longmore (east side) and within the 1400 block of West Southern Avenue (south side). Located west of Alma School Road on the south side of Southern Avenue. (1.0± acre).

REQUEST:

Major Site Plan Modification. This request will allow for a medical office development.

