



Final Design Package - Mesa, AZ - Store #3799



Design Presentation Only - Not For Construction

The building images shown are a representation of the final design intent only. The building images may not reflect construction variations required by building codes or inspectors, material availability or final design detailing.

Confidential

This document contains information that is privileged and confidential. Any unauthorized disclosure, reproduction, distribution or use of this information without express written authorization is strictly prohibited.

Issued:

August 6, 2024



EXPIRES: March 31, 2027

08/06/2024

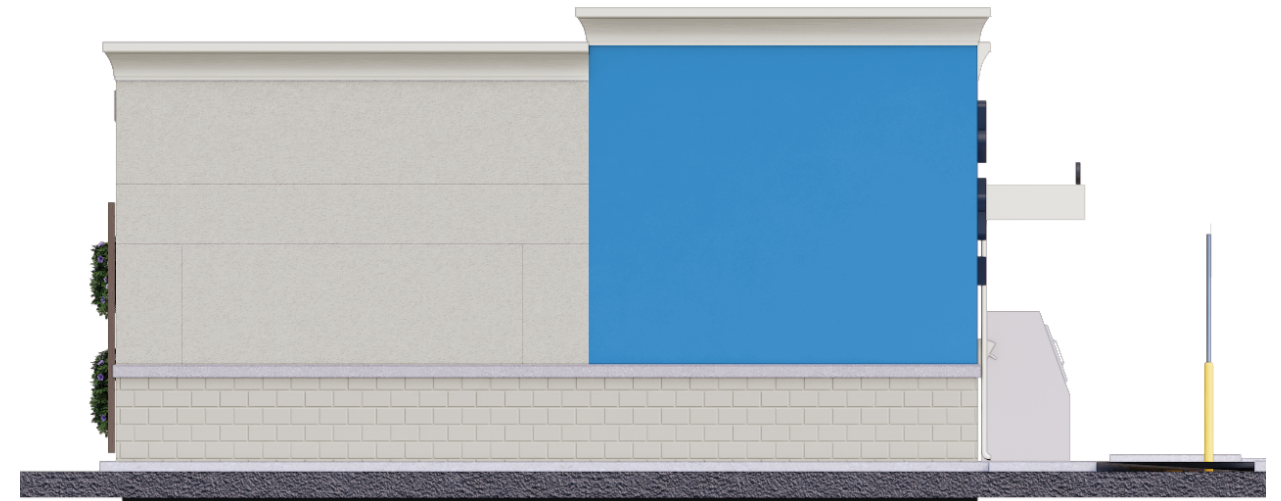


Match exterior fuel center with similar design principles found within the existing 3799 Mesa Walmart store.





Proposed North Side Elevation



Proposed West Side Elevation

Material Legend:

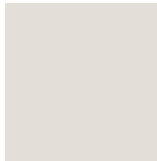


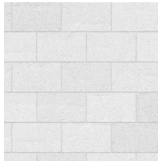
- North Elevation - 25% Split Faced CMU Wall Panel, 50% Painted EIFS Wall Panel, 25% Glazing, Aluminum Entrance Canopy and Cornices
- West Elevation - 35% Split Faced CMU Wall Panel, 50% Painted EIFS Wall Panel, 15% Aluminum Fascia Cap.
- South Elevation - 35% Split Faced CMU Wall Panel, 50% Painted EIFS Wall Panel, 15% Aluminum Fascia Cap.
- East Elevation - 35% Split Faced CMU Wall Panel, 50% Painted EIFS Wall Panel, 15% Aluminum Fascia Cap.



Proposed South Side Elevation

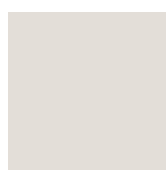


Proposed East Side Elevation

 P49E Dark Gray Painted EIFS	 P134E Light Gray Painted EIFS	 P135E Medium Gray	 P162E Black Gray	 CMU Wainscot	 P76 Walmart Blue	 Wood Composite Trellis. Painted to match P162E - Black Gray
---	---	---	---	--	---	--



P49E
Dark Gray
Painted EIFS



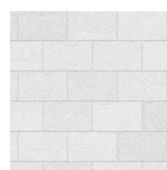
P134E
Light Gray
Painted EIFS



P135E
Medium Gray



P162E
Black Gray



CMU Wainscot



P76
Walmart Blue



Wood Composite
Trellis. Painted to
match
P162E - Black Gray



Confidential

Design Presentation Only - Not For Construction



August 6, 2024

Mesa, AZ - Store #3799

Elevations - Not to Scale

4



P49E
Dark Gray
Painted EIFS



P134E
Light Gray
Painted EIFS



P135E
Medium Gray



P162E
Black Gray



CMU Wainscot



P76
Walmart Blue



Wood Composite
Trellis. Painted to
match
P162E - Black Gray



Confidential

Design Presentation Only - Not For Construction

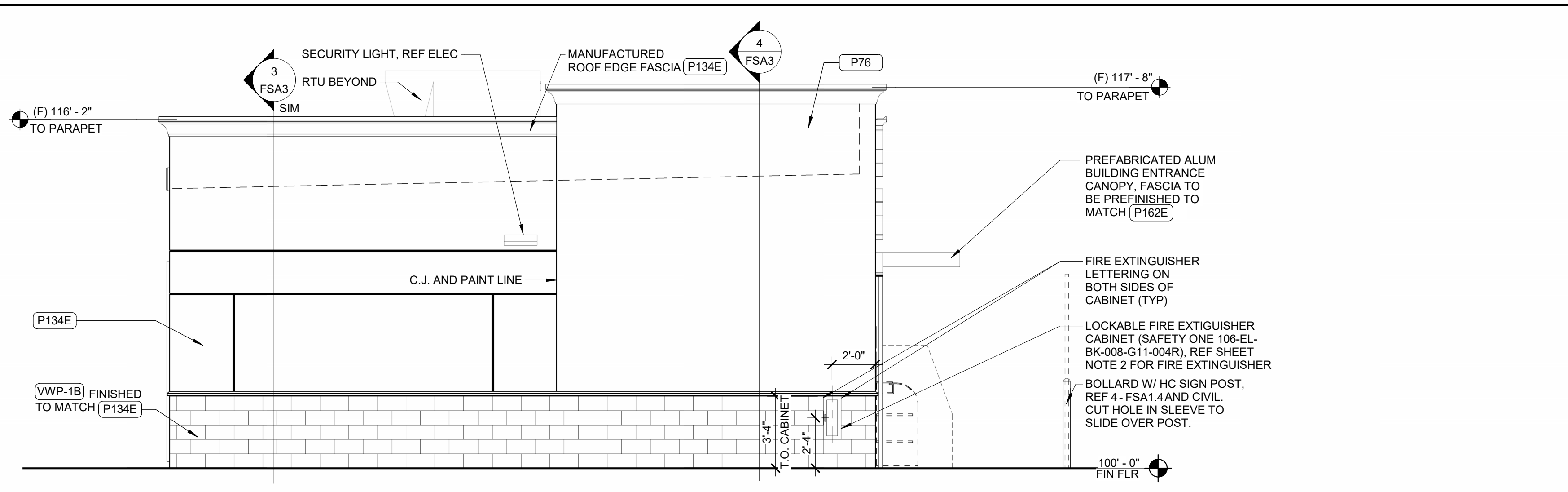


August 6, 2024

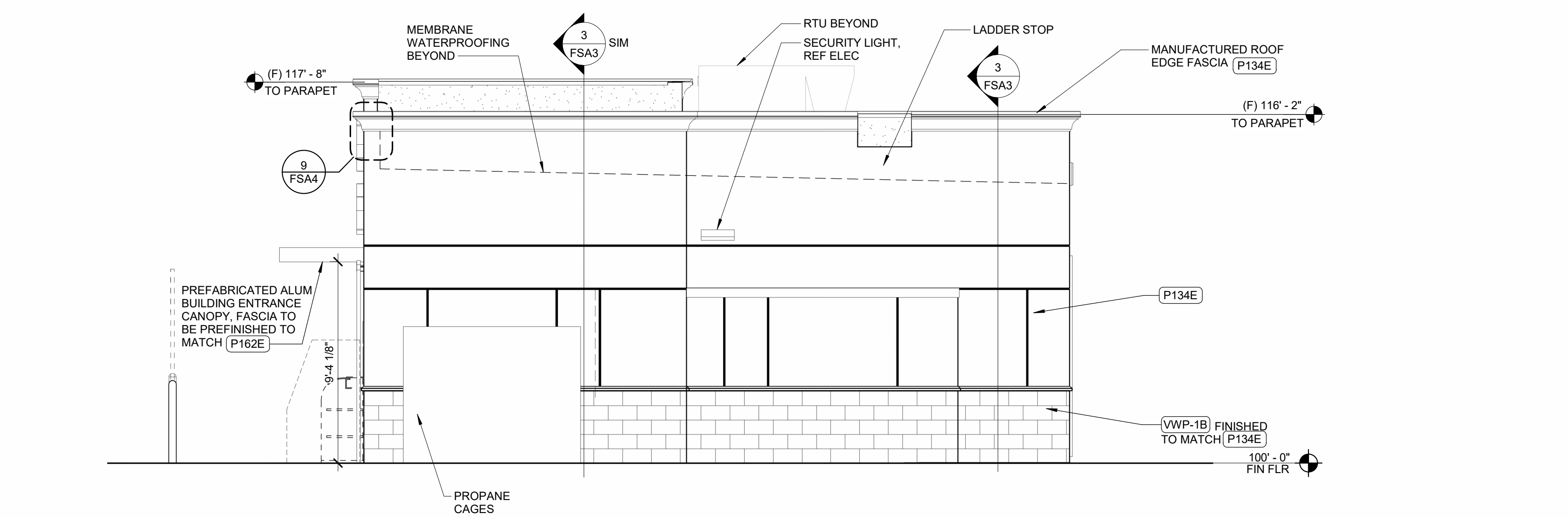
Mesa, AZ - Store #3799

Elevations - Not to Scale

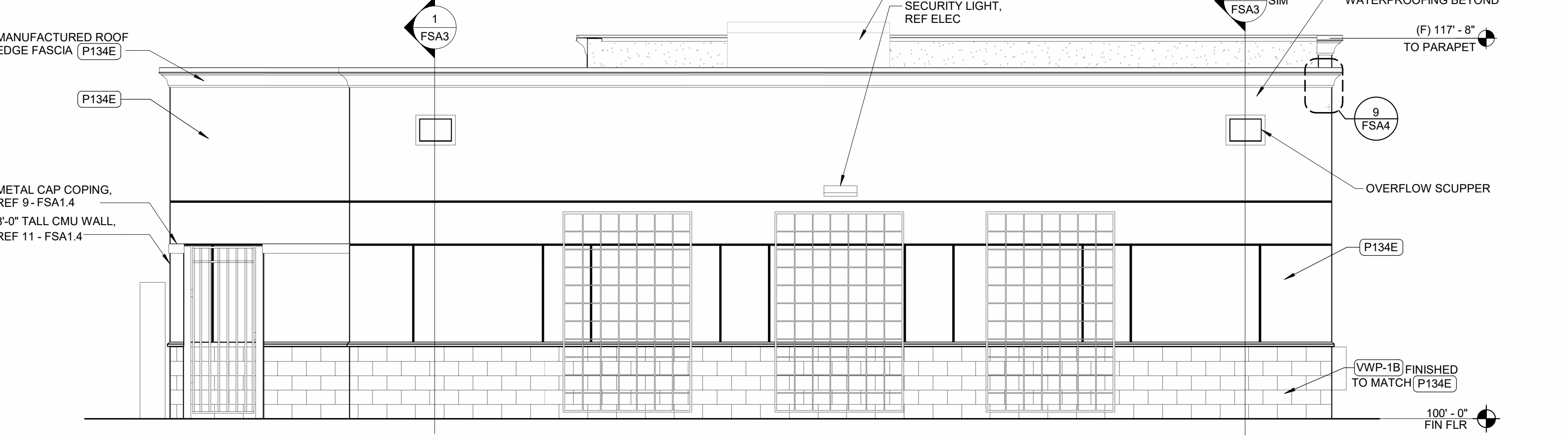
5



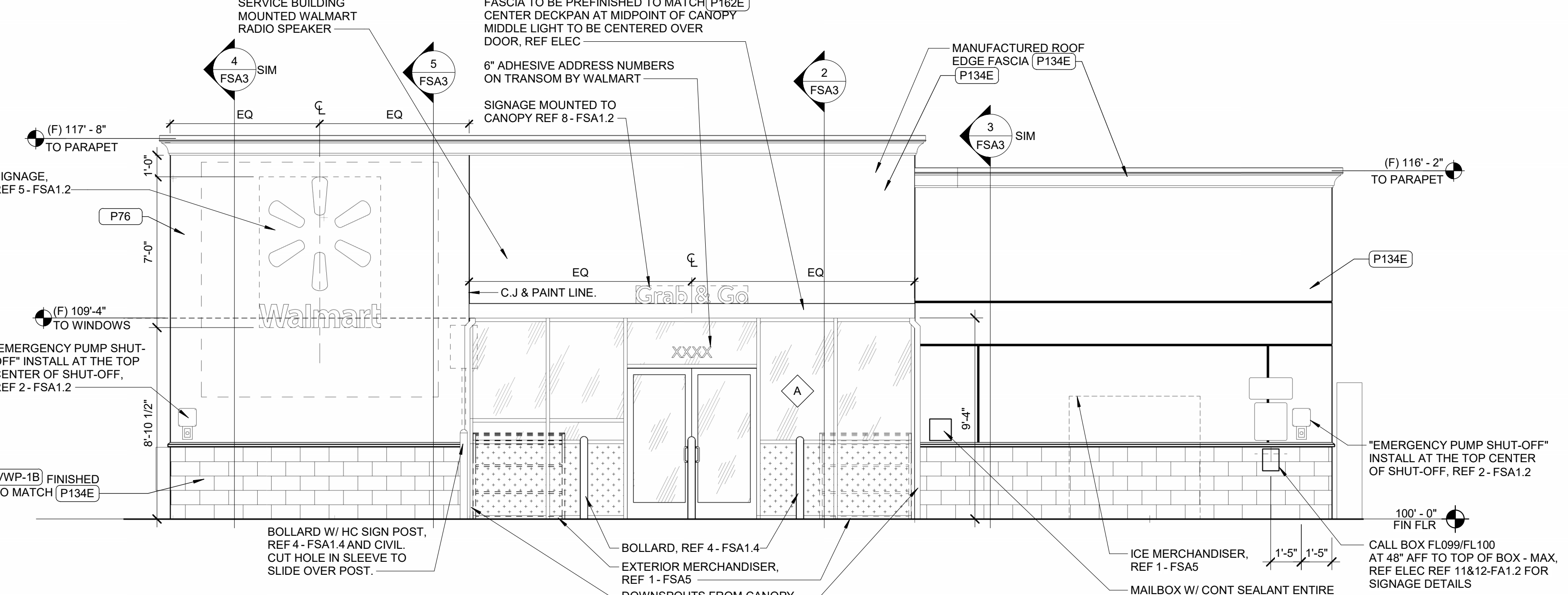
5 WEST ELEVATION
1/4" = 1'-0"



4 EAST ELEVATION
1/4" = 1'-0"

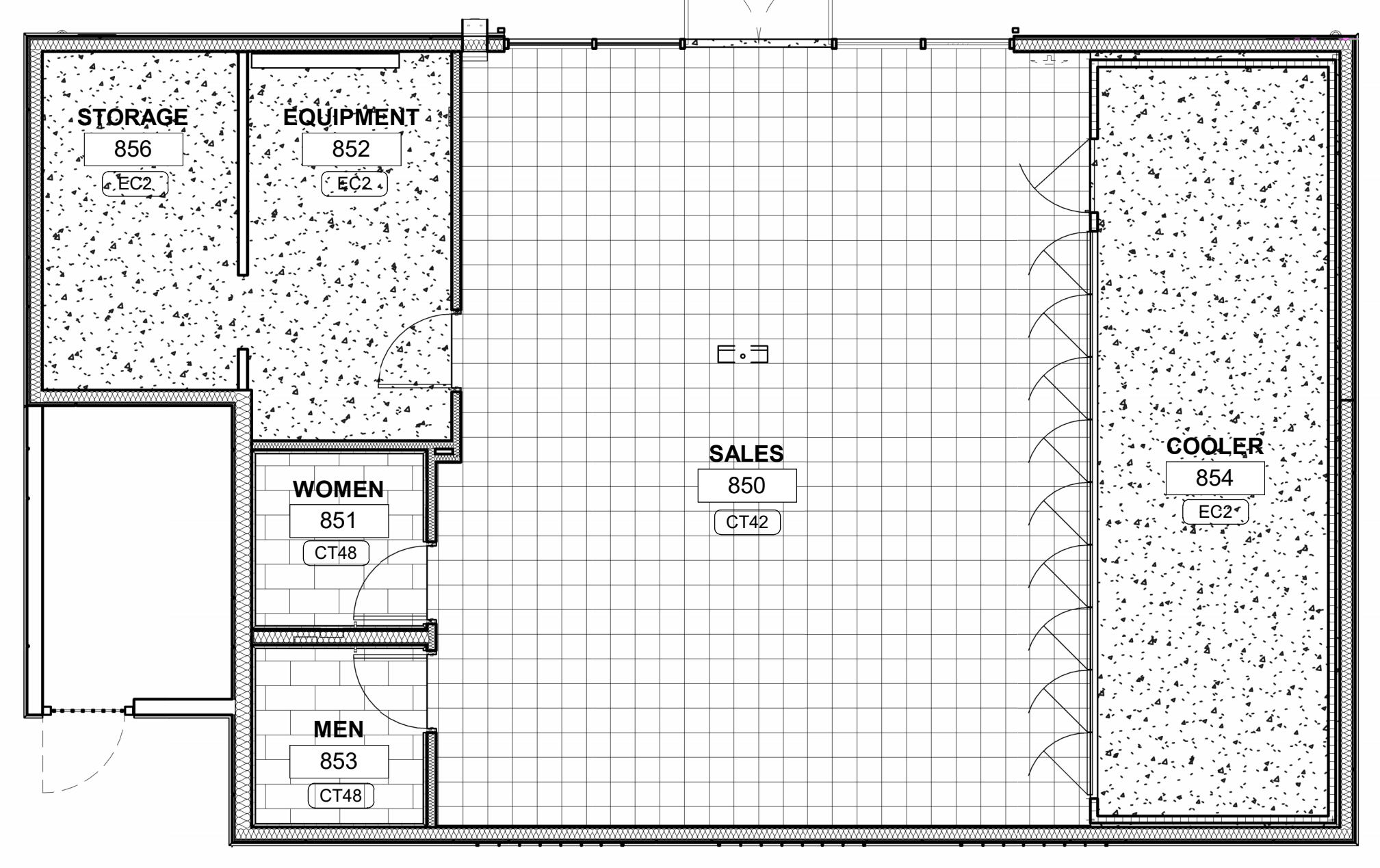


3 SOUTH ELEVATION
1/4" = 1'-0"



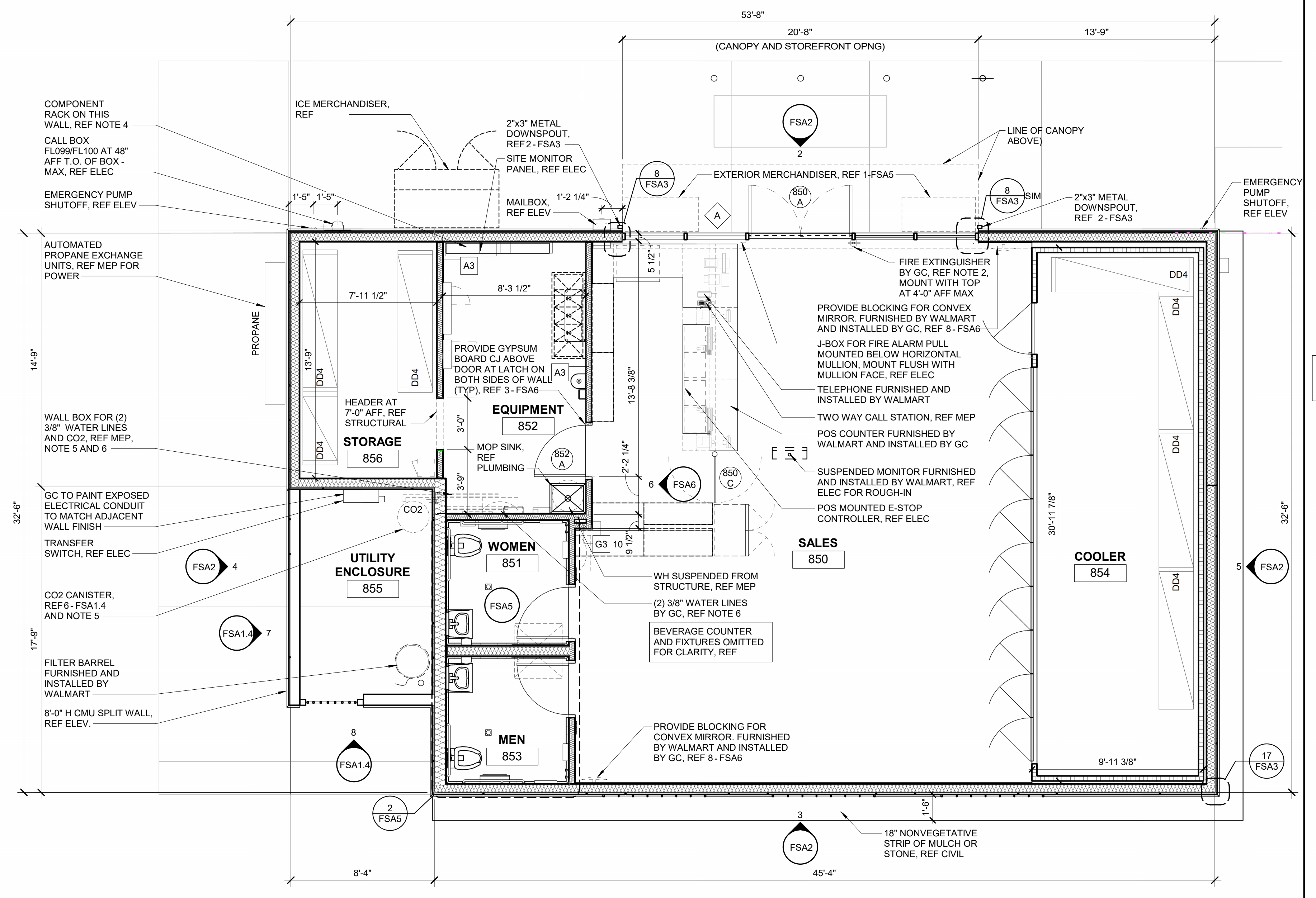
2 NORTH ELEVATION
1/4" = 1'-0"

COLOR LEGEND		SHEET NOTES	
EC2	EXPOSED CONCRETE	1	REFER TO MEP FOR MORE INFORMATION. REF SHEET FS76 FOR EQUIPMENT ITEMS < FLXX > NOT SCHEDULED HERE.
P76	"MEDIUM WAL-MART BLUE" #076	2	4A, 80B/C, 10 LB MINIMUM RATED FIRE EXTINGUISHERS SHALL BE PROVIDED BY G.C. IN ACCORDANCE W/ NFPA 10. FIRE EXTINGUISHER LOCATIONS AND SIZE SHALL BE APPROVED BY THE OFFICE OF THE FIRE MARSHAL PRIOR TO OCCUPANCY.
P134E	LIGHT GRAY	3	INTERIOR PLAN DIMENSIONS ARE TO FACE OF STUD UNO.
P162E	BLACK GRAY	4	INSTALL COMPONENT RACK SUPPLIED WITH DATA DISCONNECT (FLO91) AND UPS (FLO88) REF ELEC FOR LOCATION. DVR WILL BE INSTALLED IN RACK BY WALMART.
VENEER WALL LEGEND		5	CO2 CANISTER BY VENDOR. GC TO PROVIDE STRAPS PER 6. FSA1.4 AND 2" PVC THRU WALL AT 2'-4" TO WALL BOX AT BEVERAGE COUNTER FOR CANISTER INSTALL BY VENDOR (WITH SEALANT AFTER INSTALL).
VWP-1B	SPLIT FACE FIBER CEMENT WALL PANEL	6	PROVIDE (2) 3/8" ID BRAIDED FOOD GRADE VINYL TUBING RUNS FROM FILTERS IN EQUIPMENT ROOM TO WALL BOX AT BEVERAGE COUNTER (W/ 8" EXTRA BEYOND WALL BOX). REF MEP.
		7	REFERENCE SHEET FSA6 FOR PARTITION TYPE INFORMATION.
		8	ALL WOOD BLOCKING BELOW ROOF DECK BY GC UNO.
		9	G.C. TO COORDINATE WITH STORE MANAGER ON PREFERRED TYPE OF PADLOCK TO BE USED ON REQUIRED FUEL ITEMS



FLOOR FINISH LEGEND	
REF SHEET AS FOR ADDITIONAL FINISH INFORMATION	
CT53	PORCELAIN FLOOR TILE
EC2	EXPOSED CONCRETE
LV3	CREAM TERRAZO LVT

6 FLOOR FINISH PLAN
3/16" = 1'-0"



1 FLOOR PLAN
1/4" = 1'-0"



7007 DISCOVERY BLVD
DUBLIN, OH 43017
614.634.7000 T
WDPARTNERS.COM

STIPULATION FOR REUSE
THIS DRAWING IS INTENDED FOR THE EXCLUSIVE USE OF THE PROJECT ONLY. IT IS NOT TO BE REPRODUCED OR TRANSMITTED IN ANY FORM OR BY ANY MEANS, ELECTRONIC OR MECHANICAL, WITHOUT THE WRITTEN PERMISSION OF WDPARTNERS.COM. ANY REUSE OF THIS DRAWING FOR ANY OTHER PROJECT WITHOUT THE WRITTEN PERMISSION OF WDPARTNERS.COM IS STRICTLY PROHIBITED AND WILL BE CONSIDERED A VIOLATION OF THE LAW.

CONSULTANTS
Walmart
MESA, ARIZONA
STORE NO. 3799 - 1002
JOB NUMBER: WALFS020 | PHOTO: FSXX-44HR-WD

ISSUE BLOCK	

CHECKED BY: SME
DRAWN BY: SMIS/PLP
FILE NAME: 1440-FSA2
PROTO CYCLE: 07/26/24
DOCUMENT DATE: XX/XX/XX

NOT FOR CONSTRUCTION

SERVICE BUILDING

SHEET: **FSA2**