

Shopping, Dining, Events & More...

www.DowntownMesa.com



METRO



Central Mesa Light Rail Extension

**Mesa City Council
May 10, 2012**





Project Update

- **Design-Build contractor selected**
 - **Valley Transit Constructors (VTC)**
 - Kiewit/Mass. Joint Venture, Parsons Transportation Group
 - **Received limited notice to proceed to continue design and complete utility relocations**
- **Contractor Meet & Greet – April 24 and 25**
- **Construction Groundbreaking event – May 30**
- **Federal funding**
 - **Project Construction Grant Agreement anticipated for summer 2012**



Project Update

- **Continuing design plans**
 - Architecture/art
 - Roadway design
 - Final design review meeting fall 2012
- **Real estate acquisition**
 - Legal descriptions, appraisals
 - All property acquired July 2013
- **Continuing outreach, business assistance**





Business Assistance Toolbox

- Communications/staffing
- Signs and banners, way finding
- Community Advisory Board (CAB)
- METRO MAX Rewards program
- Web-based business directory
- Customer postcards
- General marketing support
- Multi-media marketing campaigns
- Business assistance seminars, business counseling
- Financial grants/loans
- Utility rebate program





METRO & VTC Field Offices

South Center Complex

METRO Field Office





METRO Team

- Martin Spong – Project Manager
- Luis Mota – Resident Engineer
- Lisa Procknow – Public Outreach
- Gary Flunoy – Business Assistance

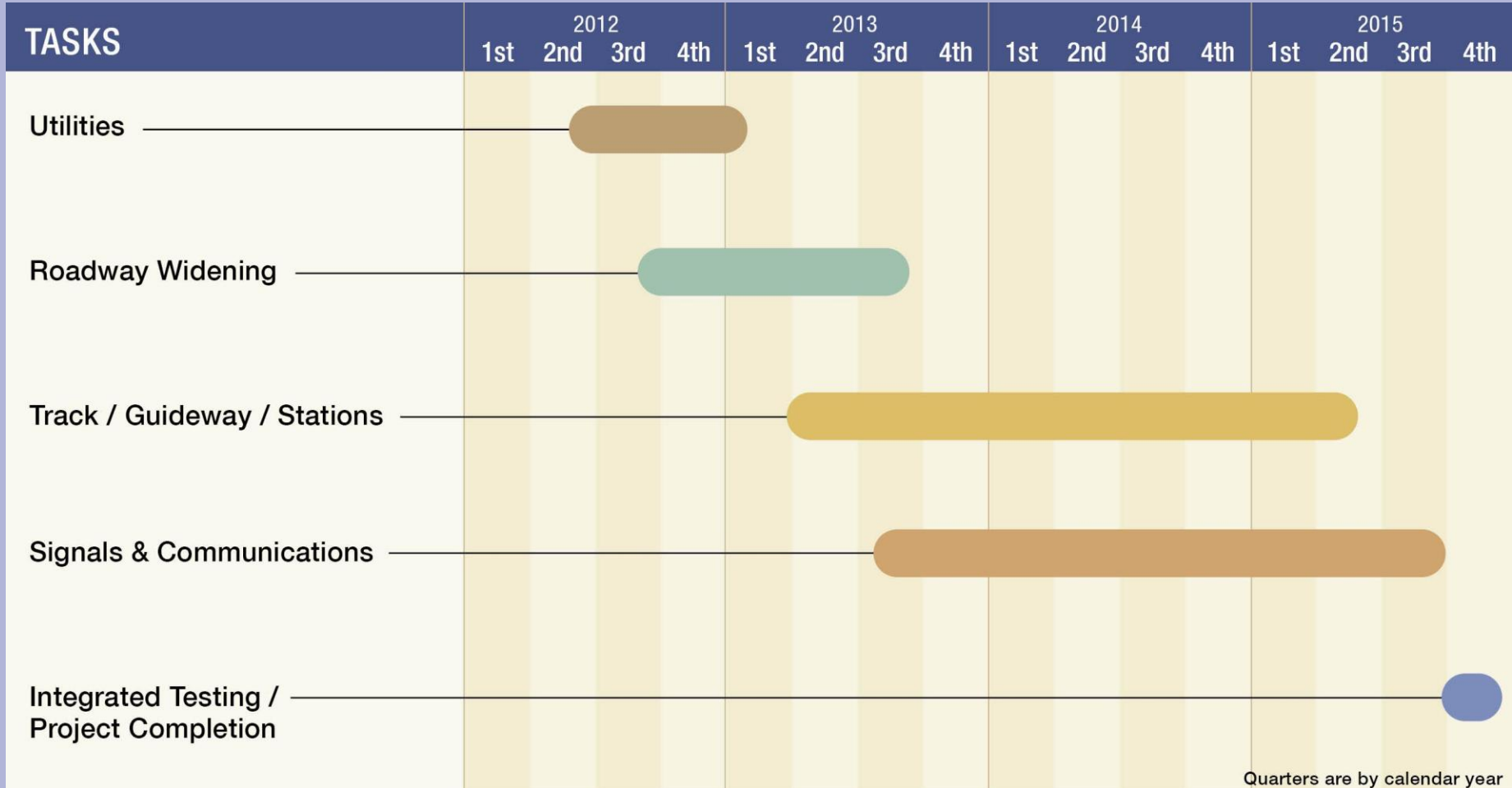


VTC Team

- **Spencer Cruse - Project Manager**
- **Justin Hansen - Construction Manager**
- **Charles Phillips – Operations Manager**
- **Bob Becky – Civil and Utility Superintendent**
- **Adam Barrier – Traffic Control Superintendent**
- **Avrum Loewenstein – Design Manager**
- **Bryan Scalzo – Public Outreach**

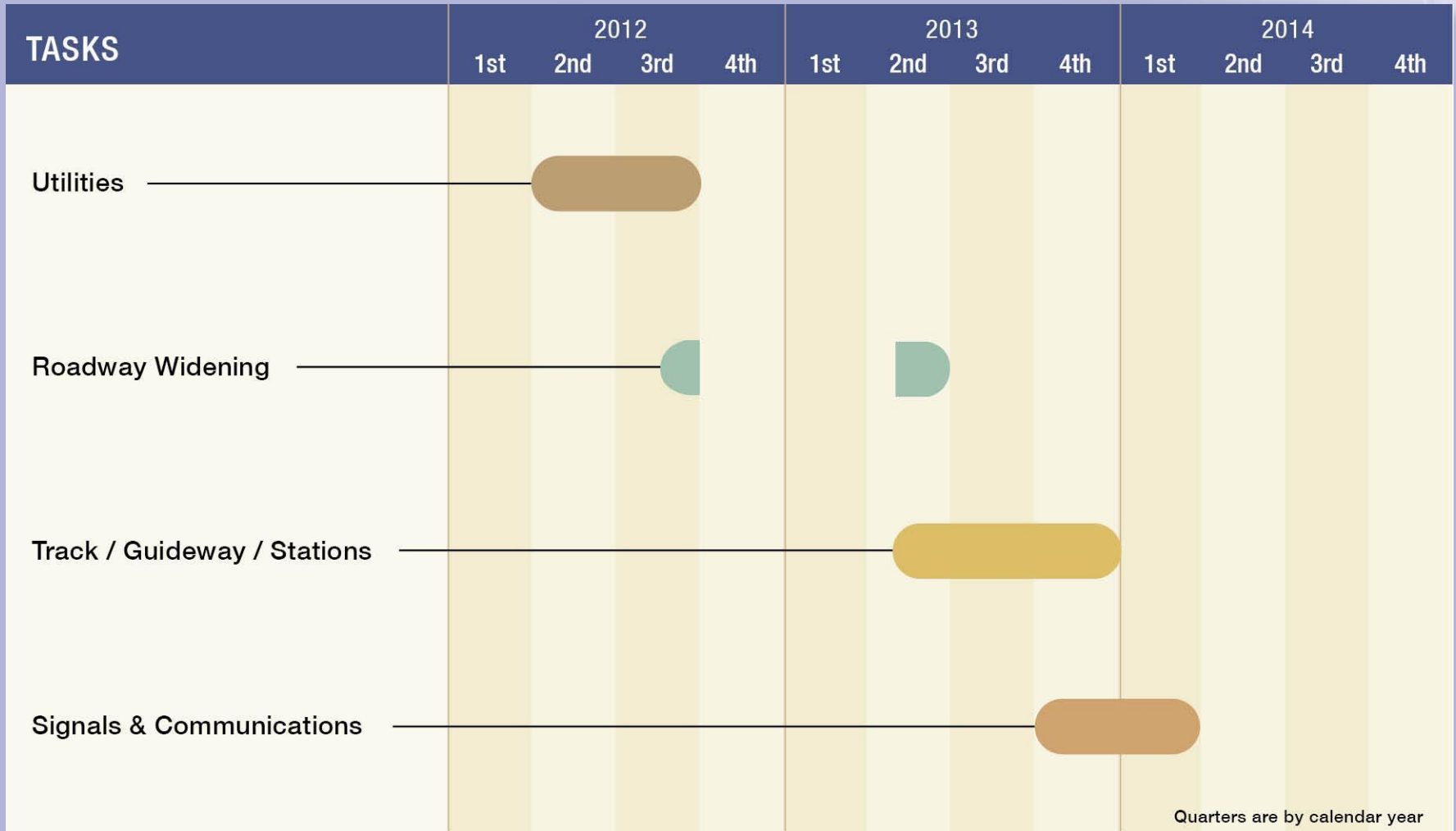


Project Construction Schedule





Downtown Construction Schedule

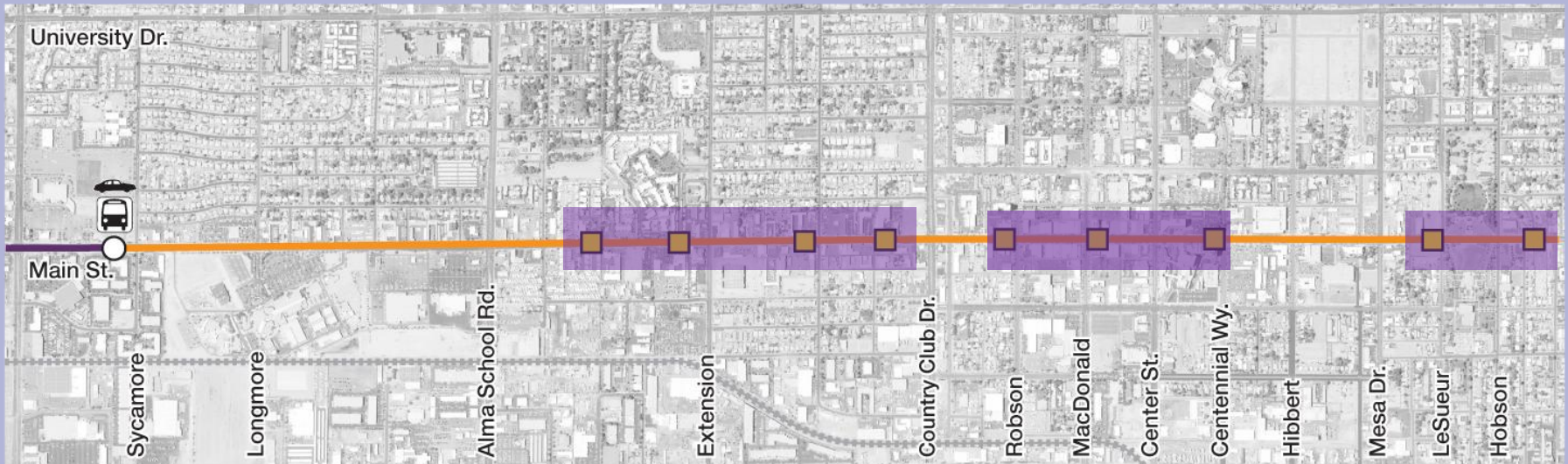




Initial Construction Activities

- Survey, potholing
- Relocate storm drain manholes to outside the trackway
 1. Country Club to Centennial – 3 locations
 2. Mesa Drive to Ashland – 2 locations
 3. Alma School to Country Club – 4 locations

■ Storm drain manhole





Initial Construction Activities

- Relocate water, sewer and gas lines
 - Country Club to Ashland
- Relocate street lighting from median to sidewalks
 - Sycamore to Country Club



Sewer line relocation



Coming Soon



This is a photo simulation. Design will be finalized in 2013.

Shopping, Dining, Events & More...

www.DowntownMesa.com



METRO