



# Final Design Package - Mesa, AZ - Store #3799



**Design Presentation Only - Not For Construction**

The building images shown are a representation of the final design intent only. The building images may not reflect construction variations required by building codes or inspectors, material availability or final design detailing.

**Confidential**

This document contains information that is privileged and confidential. Any unauthorized disclosure, reproduction, distribution or use of this information without express written authorization is strictly prohibited.

Issued:

August 6, 2024



EXPIRES: March 31, 2027

**08/06/2024**

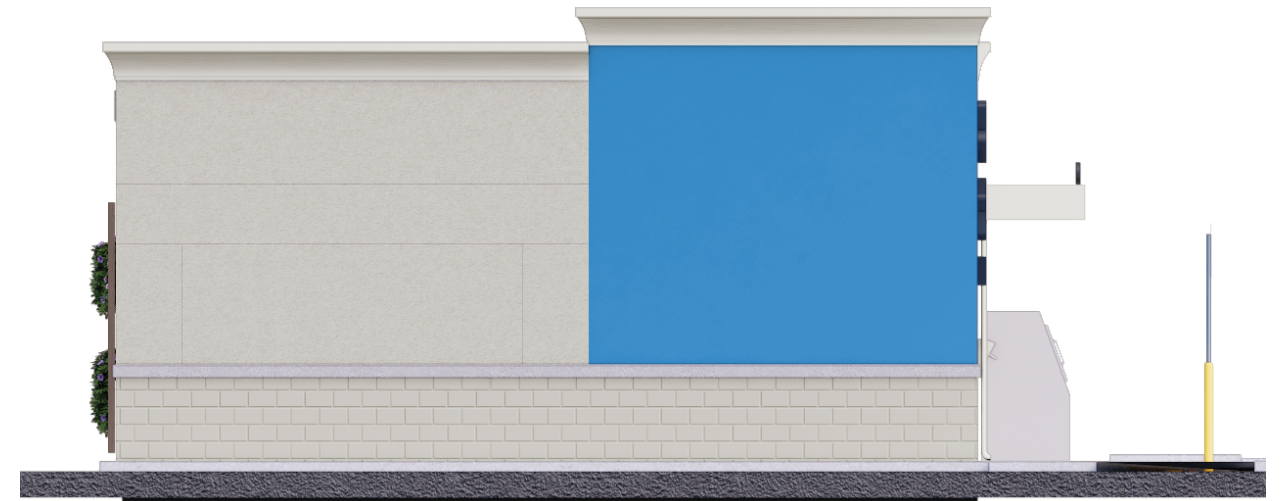


Match exterior fuel center with similar design principles found within the existing 3799 Mesa Walmart store.





Proposed North Side Elevation



Proposed West Side Elevation

**Material Legend:**


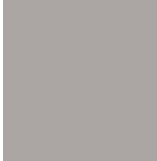
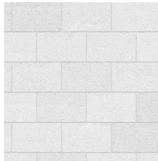
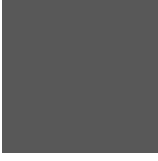
- North Elevation - 25% Split Faced CMU Wall Panel, 50% Painted EIFS Wall Panel, 25% Glazing, Aluminum Entrance Canopy and Cornices
- West Elevation - 35% Split Faced CMU Wall Panel, 50% Painted EIFS Wall Panel, 15% Aluminum Fascia Cap.
- South Elevation - 35% Split Faced CMU Wall Panel, 50% Painted EIFS Wall Panel, 15% Aluminum Fascia Cap.
- East Elevation - 35% Split Faced CMU Wall Panel, 50% Painted EIFS Wall Panel, 15% Aluminum Fascia Cap.



Proposed South Side Elevation

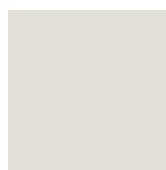


Proposed East Side Elevation

 P49E Dark Gray Painted EIFS	 P134E Light Gray Painted EIFS	 P135E Medium Gray	 P162E Black Gray	 CMU Wainscot	 P76 Walmart Blue	 Wood Composite Trellis. Painted to match P162E - Black Gray
---	---	---	---	--	---	--



P49E  
Dark Gray  
Painted EIFS



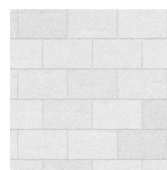
P134E  
Light Gray  
Painted EIFS



P135E  
Medium Gray



P162E  
Black Gray



CMU Wainscot



P76  
Walmart Blue



Wood Composite  
Trellis. Painted to  
match  
P162E - Black Gray



Confidential

Design Presentation Only - Not For Construction



August 6, 2024

Mesa, AZ - Store #3799

Elevations - Not to Scale

4



P49E  
Dark Gray  
Painted EIFS



P134E  
Light Gray  
Painted EIFS



P135E  
Medium Gray



P162E  
Black Gray



CMU Wainscot



P76  
Walmart Blue



Wood Composite  
Trellis. Painted to  
match  
P162E - Black Gray



Confidential

Design Presentation Only - Not For Construction



August 6, 2024

Mesa, AZ - Store #3799

Elevations - Not to Scale

COLOR LEGEND	
EC2	EXPOSED CONCRETE
P76	"MEDIUM WAL-MART BLUE" #076
P134E	LIGHT GRAY
P162E	BLACK GRAY

- | SHEET NOTES |  | FS-A2-GN<br>102816 |
|-------------|--|--------------------|
| 1.          | REFER TO MEP FOR MORE INFORMATION. REF SHEET FS-T6 FOR EQUIPMENT ITEMS < FLXX > NOT SCHEDULED HERE.  |                    |
| 2.          | 4A, 80B/C, 10 LB MINIMUM RATED FIRE EXTINGUISHERS SHALL BE PROVIDED BY G.C. IN ACCORDANCE W/ NFPA 10. FIRE EXTINGUISHER LOCATIONS AND SIZE SHALL BE APPROVED BY THE OFFICE OF THE FIRE MARSHAL PRIOR TO OCCUPANCY. |                    |
| 3.          | INTERIOR PLAN DIMENSIONS ARE TO FACE OF STUD UNO.  |                    |
| 4.          | INSTALL COMPONENT RACK SUPPLIED WITH DATA DISCONNECT (FLOOR) AND UPS ( FLOOR ) REF ELEC FOR LOCATION. DVR WILL BE INSTALLED IN RACK BY WALMART.  |                    |
| 5.          | CO2 CANISTER BY VENDOR. GC TO PROVIDE STRAPS PER 6. FSA1.4 AND 2" PVC THRU WALL AT 2'-4" TO WALL BOX AT BEVERAGE COUNTER FOR CANISTER INSTALL BY VENDOR (WITH SEALANT AFTER INSTALL).                              |                    |
| 6.          | PROVIDE (2) 3/8" ID BRAIDED FOOD GRADE VINYL TUBING RUNS FROM FILTERS IN EQUIPMENT ROOM TO WALL BOX AT BEVERAGE COUNTER (W/ 8" EXTRA BEYOND WALL BOX). REF MEP.  |                    |
| 7.          | REFERENCE SHEET FS-A6 FOR PARTITION TYPE INFORMATION.  |                    |
| 8.          | ALL WOOD BLOCKING BELOW ROOF DECK BY GC UNO.   |                    |
| 9.          | G.C. TO COORDINATE WITH STORE MANAGER ON PREFERRED TYPE OF PADLOCK TO BE USED ON REQUIRED FUEL ITEMS   |                    |



7007 DISCOVERY BLVD  
DUBLIN, OH 43017  
614.634.7000 T  
WDPARTNERS.COM

STIPULATION FOR REUSE  
THIS DRAWING IS INTENDED FOR THE EXCLUSIVE USE OF THE PROJECT AND NOT BE REPRODUCED OR TRANSMITTED IN ANY FORM OR BY ANY MEANS, ELECTRONIC OR MECHANICAL, INCLUDING PHOTOCOPYING, RECORDING, OR BY ANY INFORMATION STORAGE AND RETRIEVAL SYSTEM, WITHOUT THE WRITTEN PERMISSION OF THE ARCHITECT. ANY REUSE OF THIS DRAWING FOR ANY OTHER PROJECT WITHOUT THE WRITTEN PERMISSION OF THE ARCHITECT IS STRICTLY PROHIBITED AND MAY BE SUBJECT TO LEGAL ACTION.

CONSULTANTS  
**Walmart**  
MESA, ARIZONA  
STORE NO. 3799 - 1002  
JOB NUMBER: WALFS020 | PHOTO: FS-X-44HR-WD

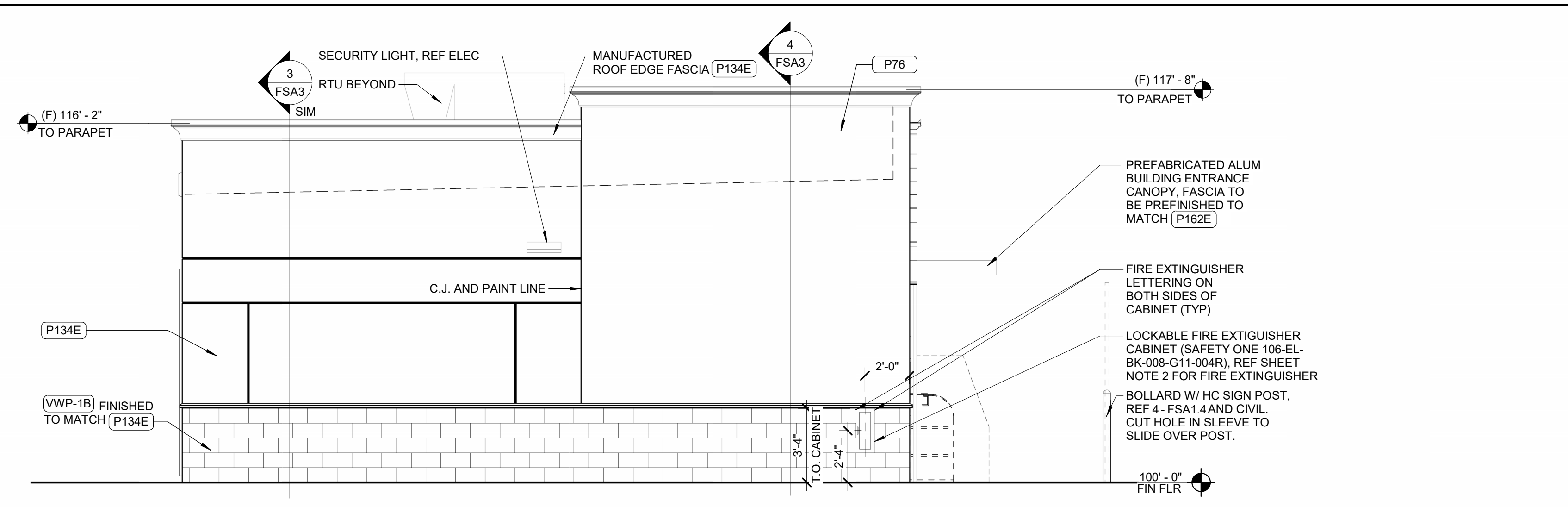
ISSUE BLOCK	

CHECKED BY: SME  
DRAWN BY: SMIS/PLP  
FILE NAME: 1440-FSA2  
PROTO CYCLE: 07/26/24  
DOCUMENT DATE: XX/XX/XX

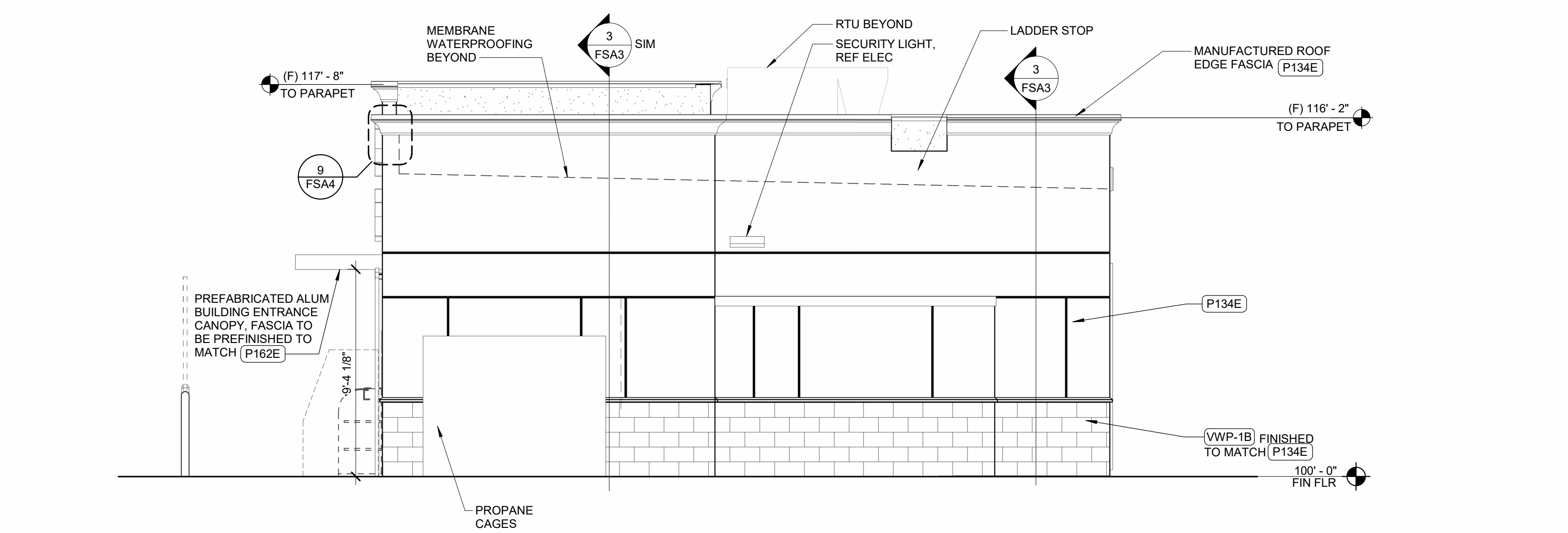
**NOT FOR CONSTRUCTION**

SERVICE BUILDING

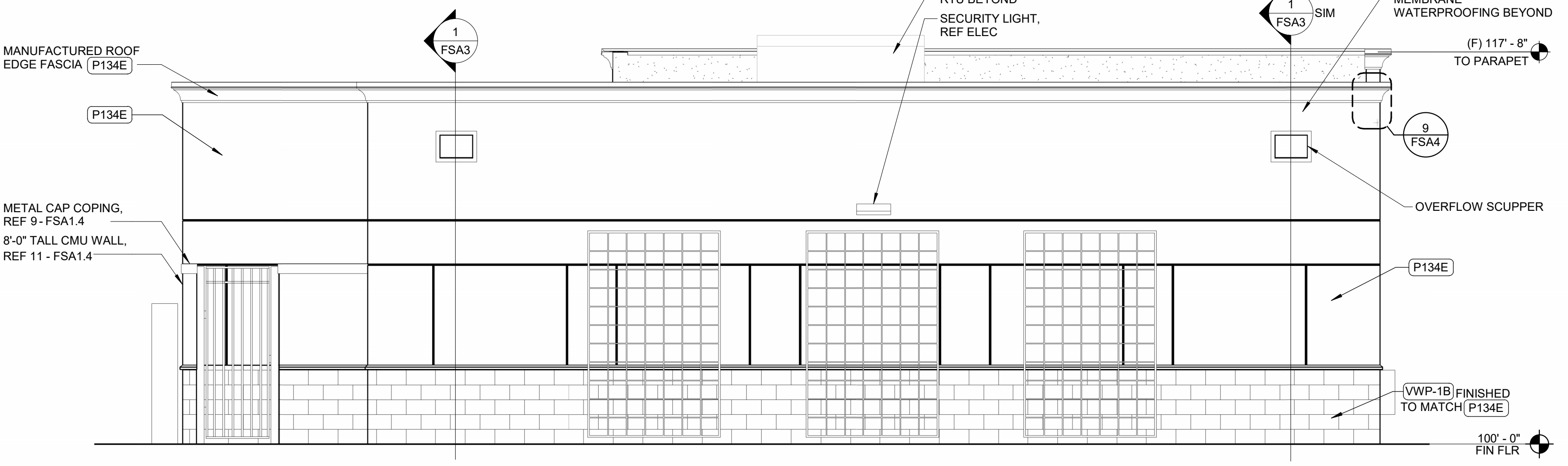
SHEET: **FSA2**



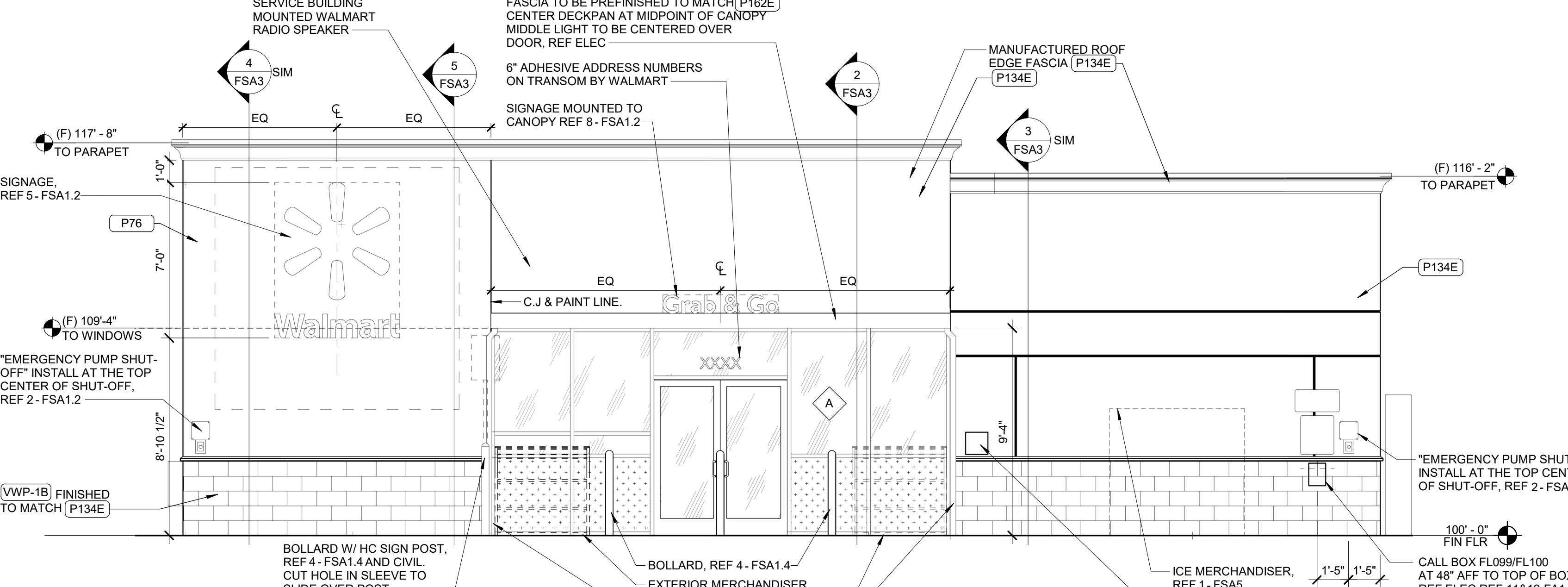
**5 WEST ELEVATION**  
1/4" = 1'-0"



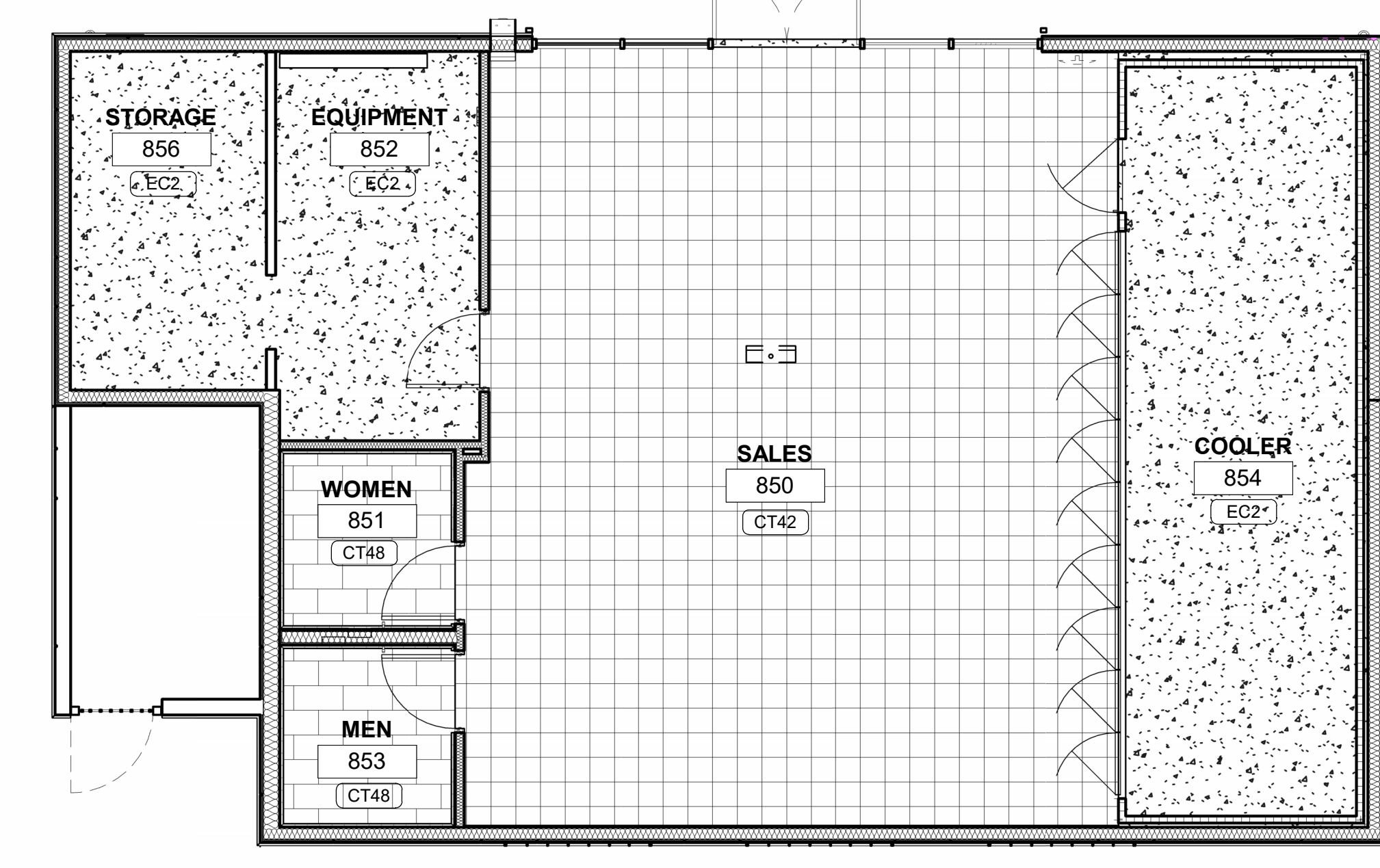
**4 EAST ELEVATION**  
1/4" = 1'-0"



**3 SOUTH ELEVATION**  
1/4" = 1'-0"

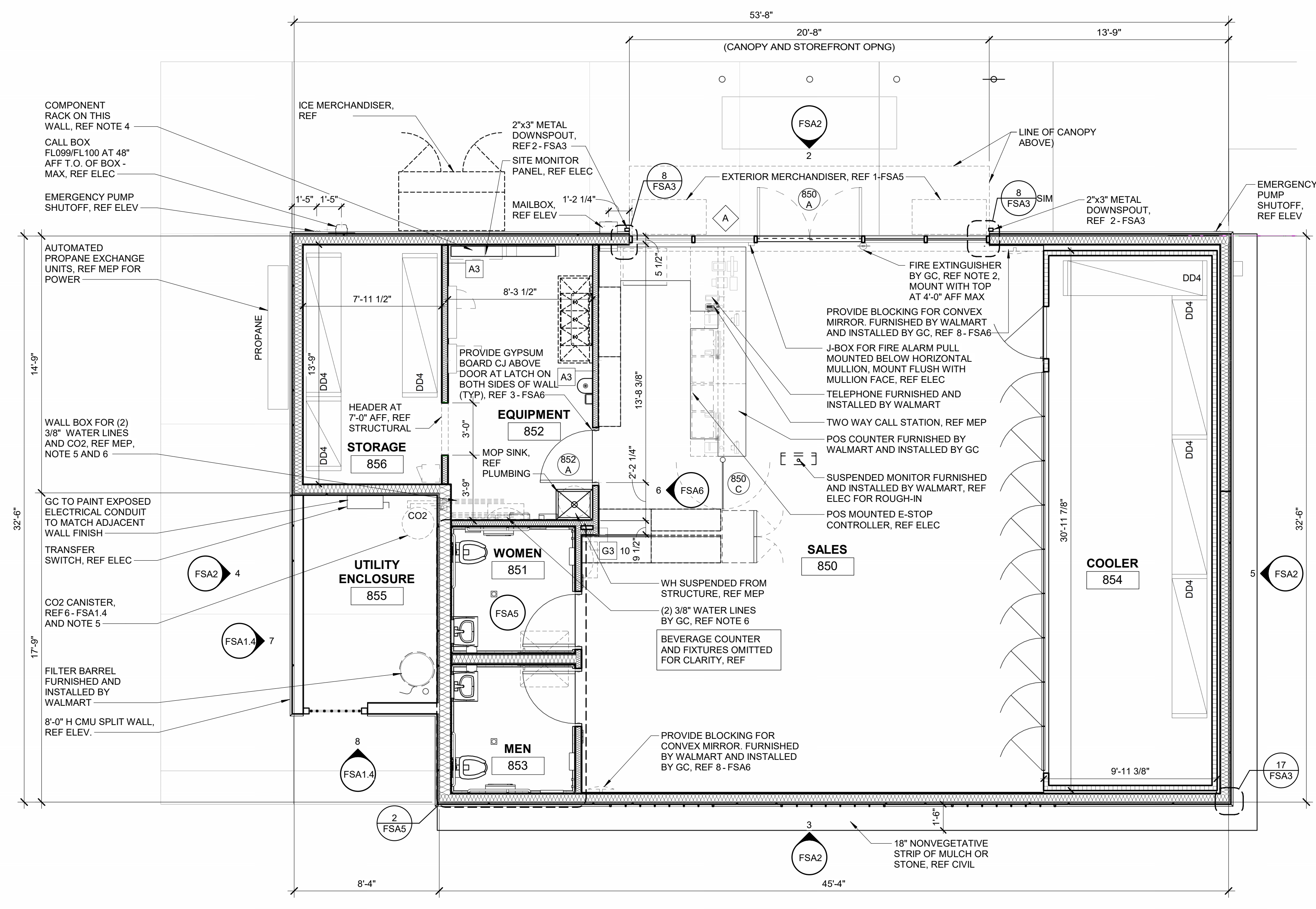


**2 NORTH ELEVATION**  
1/4" = 1'-0"



FLOOR FINISH LEGEND	
REF SHEET AS FOR ADDITIONAL FINISH INFORMATION	
CT53	PORCELAIN FLOOR TILE
EC2	EXPOSED CONCRETE
LV3	CREAM TERRAZO LVT

**6 FLOOR FINISH PLAN**  
3/16" = 1'-0"



**1 FLOOR PLAN**  
1/4" = 1'-0"