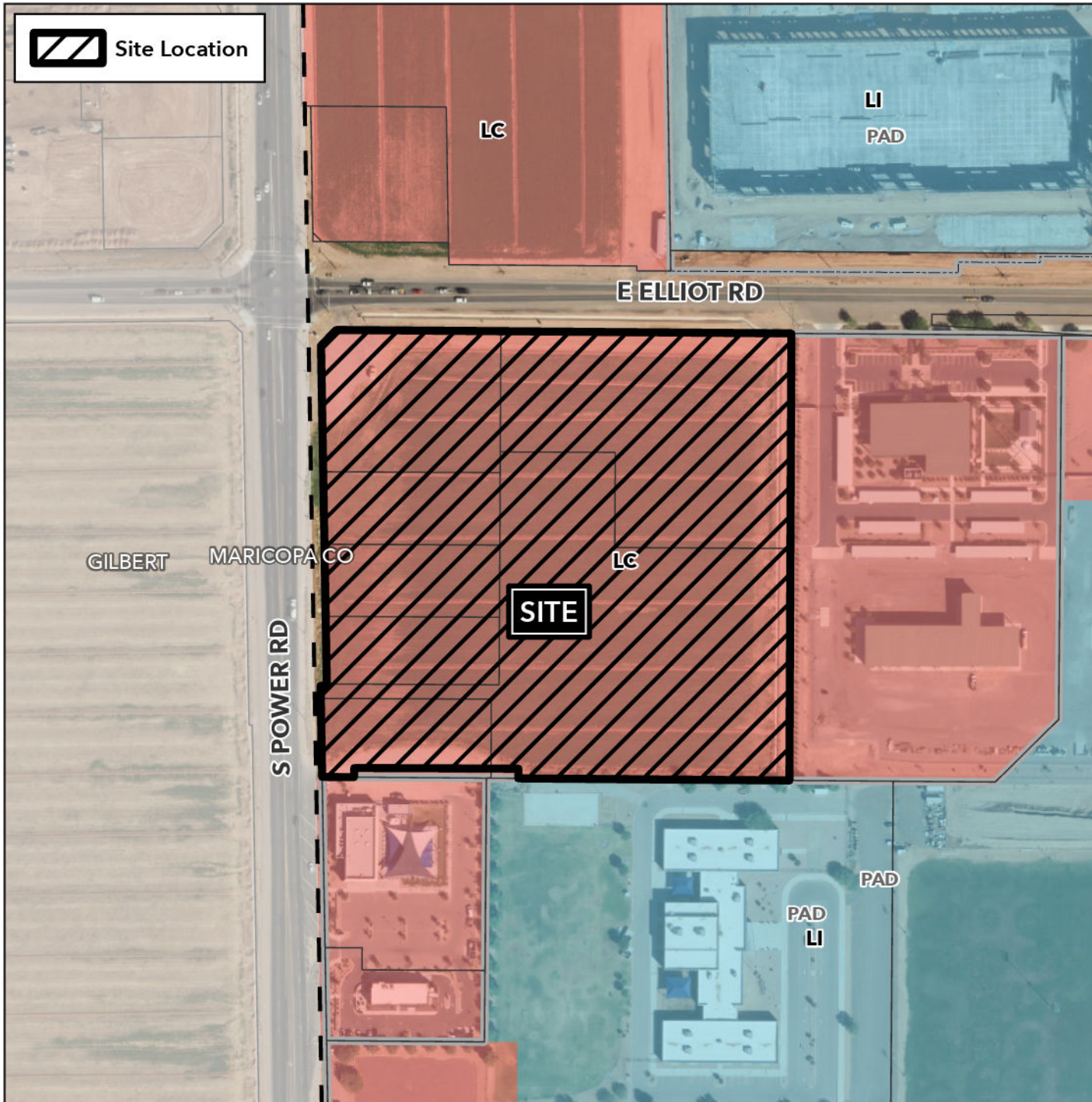


# Board of Adjustment Vicinity Map: BOA24-00550

## Case Details



Site Location



### Case:

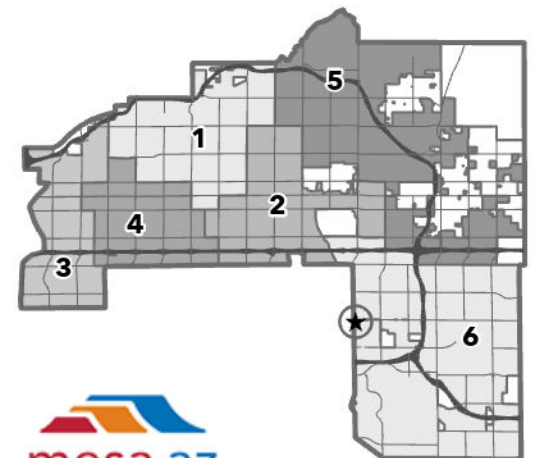
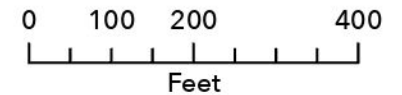
BOA24-00550

### Site / Address:

12± acres located at the southeast corner of East Elliot Road and South Power Road. (District 6)

### Request:

Requesting a Special Use Permit (SUP) for a Comprehensive Sign Plan (CSP) in the Limited Commercial (LC) District.



mesa·az