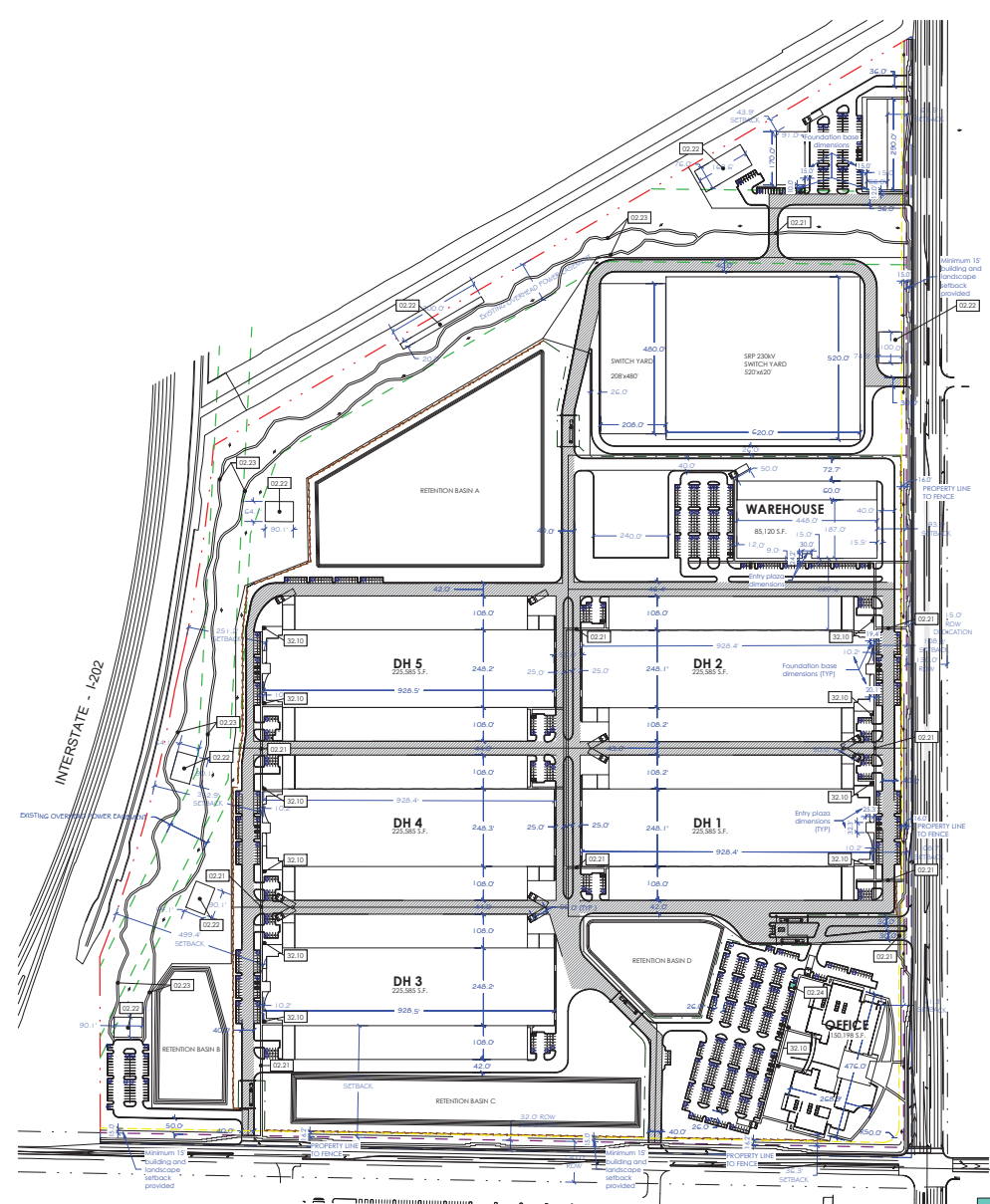


11/22/2024 9:02:22 AM
 10
 11
 12
 13
 14



KEYNOTE LEGEND

02.21	TYPICAL AT ALL PEDESTRIAN CROSSINGS - GRAY W/ EXPOSED AGG. CONC. FINISHED WALKWAY.
02.22	PUBLIC AMENITY GATHERING SPACE
02.23	PUBLIC AMENITY BIKE PARK & TRAIL
02.24	COVERED PARKING SPACES
02.10	BIKE RACK

PROJECT DATA

PROPOSED ZONING: LI
 APN#: 30431-141

GROSS SITE AREA: 6,933,336 SF (159.17 AC)
 TOTAL BUILDING AREA: 1,209,026 SF
 BUILDING COVERAGE: 17.28%
 LOT COVERAGE: 51.8%
 (IMPERVIOUS SURFACES)

COMMON OPEN SPACE REQUIRED:

OFFICE:	130,198 SF @ 1%: 1,302 SF
WAREHOUSE:	85,120 SF @ 1%: 852 SF
DATA HALL 1:	225,585 SF @ 1%: 2,256 SF
DATA HALL 2:	225,585 SF @ 1%: 2,256 SF
DATA HALL 3:	225,585 SF @ 1%: 2,256 SF
DATA HALL 4:	225,585 SF @ 1%: 2,256 SF
DATA HALL 5:	225,585 SF @ 1%: 2,256 SF
RETAIL:	39,200 SF @ 1%: 392 SF

TOTAL COMMON OPEN SPACE REQUIRED: 13,852 SF
 TOTAL COMMON OPEN SPACE PROVIDED: 40,532 SF

OFFICE

BUILDING AREA: LEVEL 1: 74,731 SF
 LEVEL: 2: 78,487 SF

TOTAL (150,198 SF) @ 1/375 SF: 401 SPACES

PARKING REQUIRED

TOTAL PARKING REQUIRED: 401
 PROVIDED: 405
 ACCESSIBLE PARKING REQUIRED: 9
 PROVIDED: 9

WAREHOUSE

OFFICE AREA: (21,380 SF) @ 1/375 SF: 57 SPACES
 INDUSTRIAL SHELL: (63,740 SF) @ 200/1000 SF: 127 SPACES
 TOTAL BUILDING AREA: 85,120 SF

PARKING REQUIRED (CODE): 184
 PARKING PROVIDED: 184
 ACCESSIBLE PARKING REQUIRED: 6
 PROVIDED: 6

DATA HALL 1

OFFICE AREA: (10,104 SF) @ 1/375 SF: 27 SPACES
 WAREHOUSE: (215,525 SF) @ 0.2/1000 SF: 44 SPACES
 TOTAL BUILDING AREA: 225,585 SF

PARKING REQUIRED (CODE): 267
 PARKING PROVIDED: 89
 ACCESSIBLE PARKING REQUIRED: 4
 PROVIDED: 4

*Parking provided per the 2024 Lokaahi Group's Parking Study

DATA HALL 2

OFFICE AREA: (10,104 SF) @ 1/375 SF: 27 SPACES
 WAREHOUSE: (215,525 SF) @ 0.2/1000 SF: 44 SPACES
 TOTAL BUILDING AREA: 225,585 SF

PARKING REQUIRED (CODE): 267
 PARKING PROVIDED: 89
 ACCESSIBLE PARKING REQUIRED: 4
 PROVIDED: 4

*Parking provided per the 2024 Lokaahi Group's Parking Study

DATA HALL 3

OFFICE AREA: (10,104 SF) @ 1/375 SF: 27 SPACES
 WAREHOUSE: (215,525 SF) @ 0.2/1000 SF: 44 SPACES
 TOTAL BUILDING AREA: 225,585 SF

PARKING REQUIRED (CODE): 267
 PARKING PROVIDED: 89
 ACCESSIBLE PARKING REQUIRED: 4
 PROVIDED: 4

*Parking provided per the 2024 Lokaahi Group's Parking Study

DATA HALL 4

OFFICE AREA: (10,104 SF) @ 1/375 SF: 27 SPACES
 WAREHOUSE: (215,525 SF) @ 0.2/1000 SF: 44 SPACES
 TOTAL BUILDING AREA: 225,585 SF

PARKING REQUIRED (CODE): 267
 PARKING PROVIDED: 89
 ACCESSIBLE PARKING REQUIRED: 4
 PROVIDED: 4

*Parking provided per the 2024 Lokaahi Group's Parking Study

DATA HALL 5

OFFICE AREA: (10,104 SF) @ 1/375 SF: 27 SPACES
 WAREHOUSE: (215,525 SF) @ 0.2/1000 SF: 44 SPACES
 TOTAL BUILDING AREA: 225,585 SF

PARKING REQUIRED (CODE): 267
 PARKING PROVIDED: 89
 ACCESSIBLE PARKING REQUIRED: 4
 PROVIDED: 4

*Parking provided per the 2024 Lokaahi Group's Parking Study

RETAIL

BUILDING AREA/RETAIL 1: 21,200 SF + RETAIL 2: 17,000 SF
 TOTAL: 38,200 @ 1/375 SF: 105 SPACES

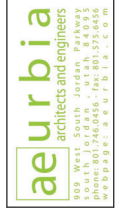
PARKING REQUIRED

TOTAL PARKING REQUIRED: 105
 PROVIDED: 132
 ACCESSIBLE PARKING REQUIRED: 5
 PROVIDED: 6

SITE LEGEND

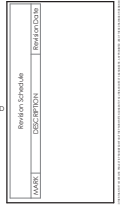
- - - - - PROPERTY LINE
- - - - - PROPERTY LINE - RIGHT-OF-WAY ADJUSTED
- - - - - SETBACK
- - - - - BIGHT-OF-WAY
- - - - - BIGHT-OF-WAY
- - - - - ELECTRICAL EASEMENT

A3 SITE PLAN - OVERALL
 11/22/2024



**PRELIMINARY
 NOT FOR
 CONSTRUCTION**
 11/22/2024 9:02:22 AM

CONFIDENTIAL
 NOVA - MESA ELSWORTH
 MESA, ARIZONA



AE2023.073
SITE PLAN - OVERALL

DATE: 08.09.2024

SHEET #:

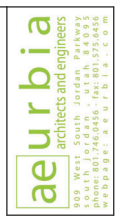
PRO01

Copyright © AEURBIA, LLC.



11/22/2024 9:02:26 AM

KEYNOTE LEGEND	
92.20	COMMON SPACE
92.10	BIKE RACK



**PRELIMINARY
NOT FOR
CONSTRUCTION**
11/22/2024 9:02:26 AM

CONFIDENTIAL
NOVA - MESA ELSWORTH
MESA, ARIZONA

REVISIONS	DATE	BY	APP'D

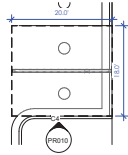
AE2023.073
SITE AMENITIES
PLAN

DATE: 08.09.2024
SHEET #:

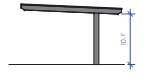
PRO10
COPYRIGHT
AE URBIA, LLC



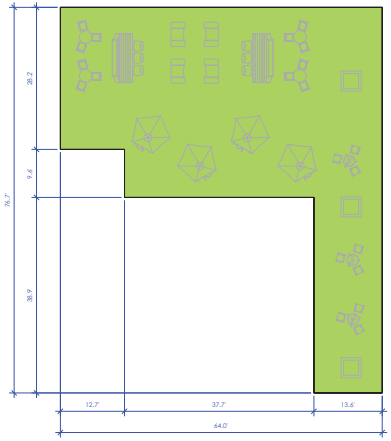
A2 SITE PLAN - OVERALL AMENITIES PLAN
1" = 10'-0"



E5 ENLARGED COVERED PARKING
1" = 10'-0"

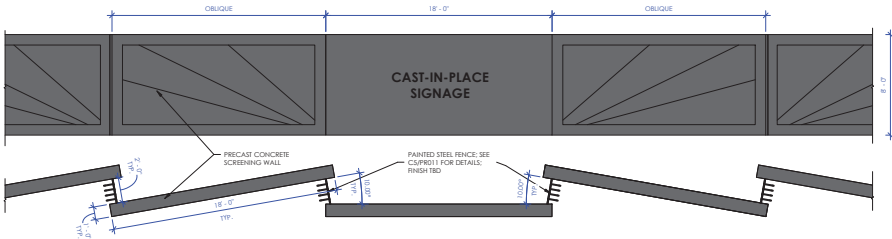


E6 COVERED PARKING ELEVATION
1" = 10'-0"

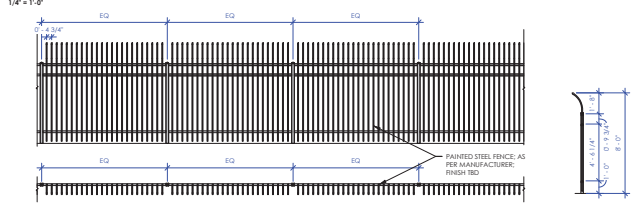


A5 ENLARGED TYP. DATA HALL AMENITY AREA
1" = 10'-0"

FORMAL DESIGN REVIEW



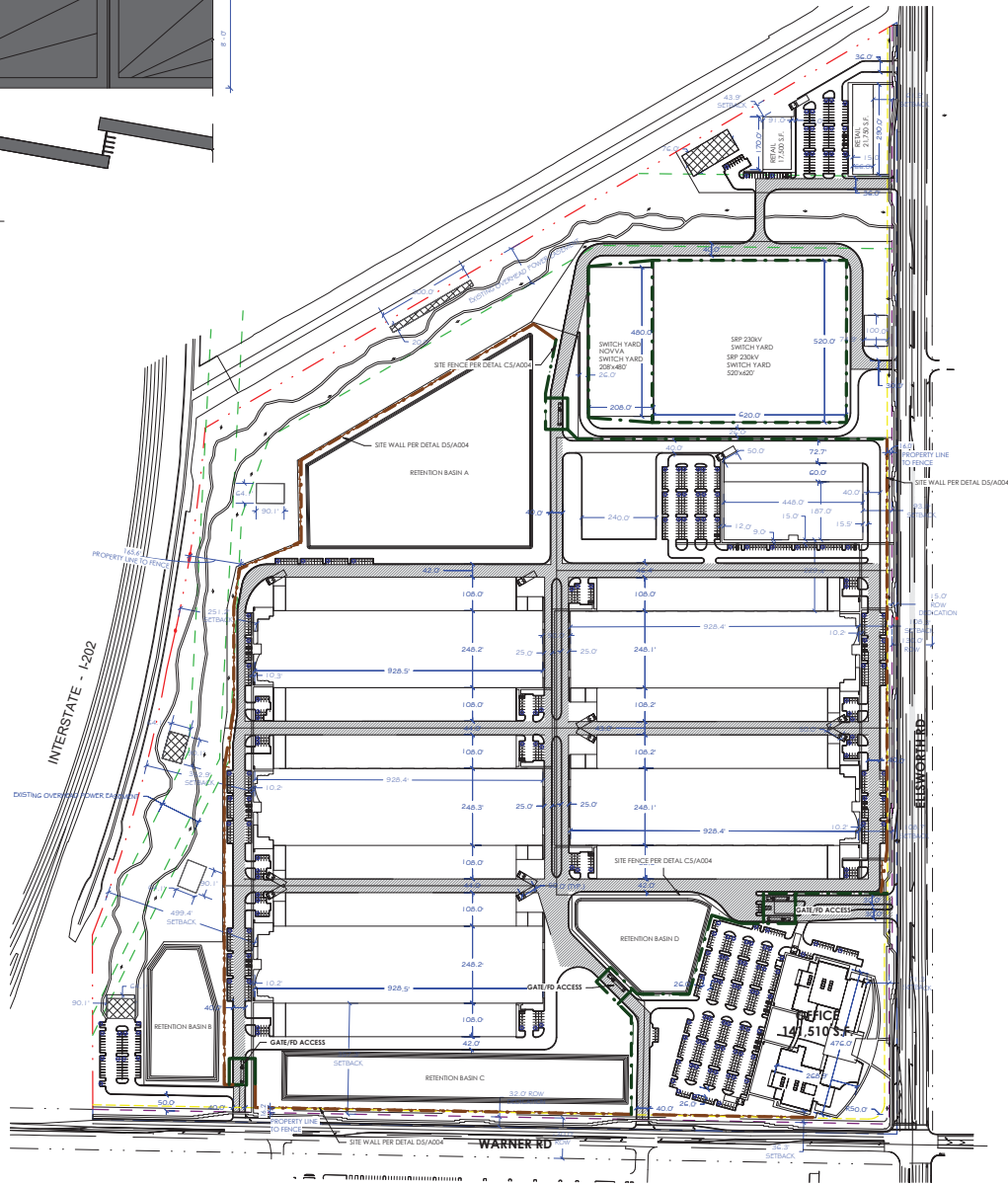
DS
PREL
CONCRETE WALL DETAIL



CS
PREL
METAL FENCE DETAIL

SITE LEGEND

- CONCRETE WALL
- METAL FENCING



AS
PREL
SITE WALL PLAN

DATE	DESCRIPTION	BY

AE2023.073
SITE PLAN -
WALL PLAN

DATE: 08.09.2024

SHEET #:

PRO11

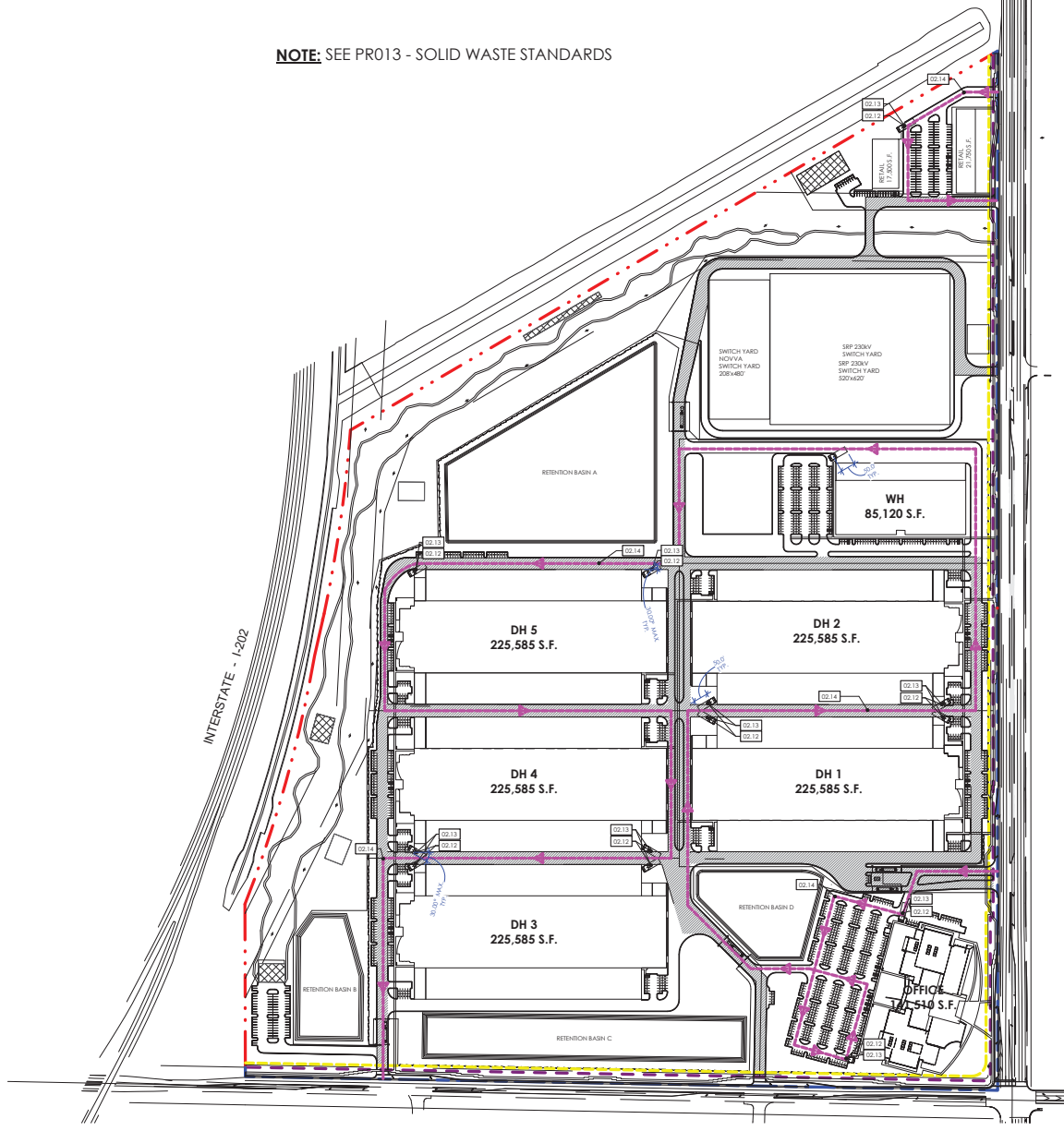
FORMAL DESIGN REVIEW
 COPYRIGHT ©
 AE URBIA, LLC



11/22/2024 9:02:30 AM

NOTE: SEE PR013 - SOLID WASTE STANDARDS

KEYNOTE LEGEND	
02.12	DUMPSITE ENCLOSURE PER M-42.1 & M-42.2
02.13	DUMPSITE ENCLOSURE - 50' CLEARANCE TYP.
02.14	SOLID WASTE ACCESS ROUTE



**PRELIMINARY
NOT FOR
CONSTRUCTION**
11/22/2024 9:02:30 AM

CONFIDENTIAL
NOVA - MESA ELLSWORTH
MESA, ARIZONA

NOVA	NOVA PROJECT	NOVA PROJECT
------	--------------	--------------

AE2023.073
SITE PLAN -
WASTE
ACCESS PLAN

DATE: 08.09.2024

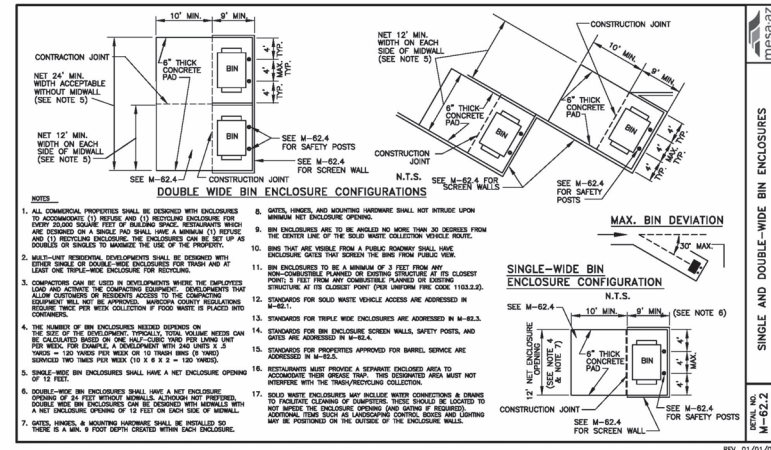
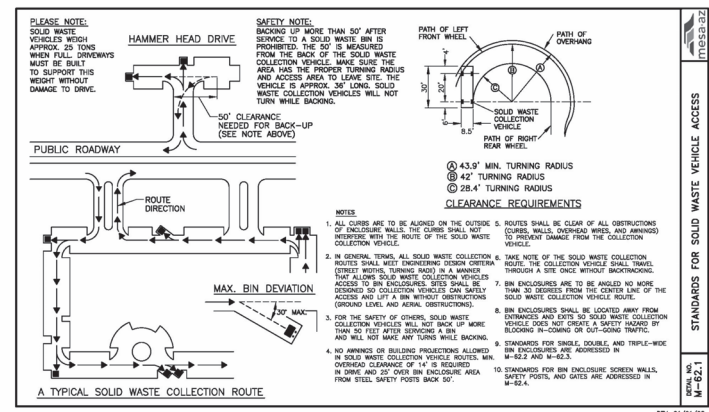
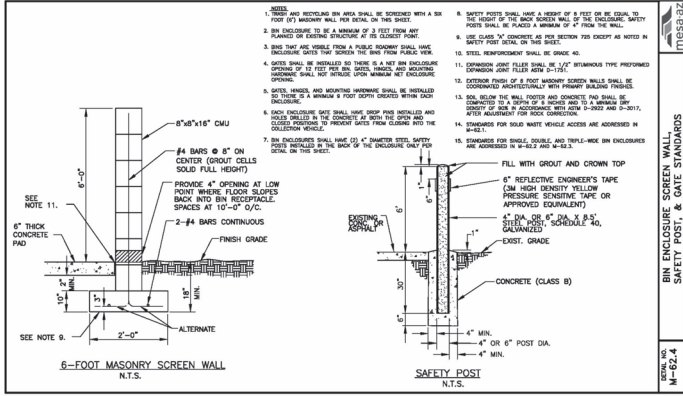
SHEET #:

PR012

FORMAL DESIGN REVIEW
COPYRIGHT © AEURBIA, LLC

AS SITE PLAN - WASTE ACCESS PLAN
PR012





BIKE PARK TRAIL CONCEPTS



AN INCLUSIVE BIKE TRAIL SYSTEM IS PLANNED FOR THIS AREA ALONG THE AMENITIES PATHWAY TRAIL THAT WILL INCLUDE AREAS FOR ALL AGES AND SKILLS

THESE ARE CONCEPT IMAGES THAT WILL HELP INFORM THE FINAL DESIGN BUT DO NOT REPRESENT A FINAL DESIGN IT AT THIS TIME



GATHERING SPACE CONCEPTS



SEATING AND GATHERING SPACES ARE PLANNED INTERMITTENTLY ALONG THE AMENITIES PATHWAY TRAIL

THESE ARE CONCEPT IMAGES THAT WILL HELP INFORM THE FINAL DESIGN BUT DO NOT REPRESENT A FINAL DESIGN IT AT THIS TIME

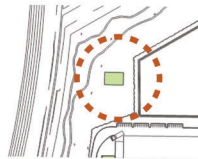


WATER SCULPTURE CONCEPTS



A WATER FEATURE IS PLANNED FOR THIS AREA ALONG THE AMENITIES PATHWAY TRAIL

THESE ARE CONCEPT IMAGES THAT WILL HELP INFORM THE FINAL DESIGN BUT DO NOT REPRESENT A FINAL DESIGN IT AT THIS TIME



CALISTHENICS



A CALISTHENICS AND NATURAL EXERSIZE AREA IS PLANNED ALONG THE AMENITIES PATHWAY TRAIL

THESE ARE CONCEPT IMAGES THAT WILL HELP INFORM THE FINAL DESIGN BUT DO NOT REPRESENT A FINAL DESIGN IT AT THIS TIME

