



Chick-fil-A
5200 Buffington Road
Atlanta, Georgia
30349-2998



111 3rd AVE. S.
SUITE 400
MINNEAPOLIS, MN 55401
www.core-states.com

NOT FOR
REGULATORY
APPROVAL,
BIDDING, OR
CONSTRUCTION

CHICK-FIL-A
ALMA SCHOOL & SOUTHERN
1320 W. SOUTHERN AVE.
MESA, AZ 85202

FSR#05202

BUILDING TYPE / SIZE: P13 LE DTO

RELEASE: 22.05

PRINTED FOR

ENTITLEMENT

REVISION SCHEDULE

NO. DATE DESCRIPTION

CONSULTANT PROJECT # CFA 35892

DATE 02/01/2023

DRAWN BY HHARRIS

INFORMATION CONTAINED ON THIS DRAWING IS THE PROPERTY OF CHICK-FIL-A. IT IS TO BE USED ONLY FOR THE PROJECT AND SITE SPECIFICALLY IDENTIFIED HEREON. NO PART OF THIS DRAWING IS TO BE REPRODUCED OR TRANSMITTED IN ANY FORM OR BY ANY MEANS, ELECTRONIC OR MECHANICAL, WITHOUT PERMISSION IN WRITING FROM CHICK-FIL-A.

EXTERIOR ELEVATIONS (COLOR)

SHEET

EXTERIOR ELEVATIONS (COLOR)

SHEET

EXTERIOR ELEVATIONS (COLOR)

SHEET

EXTERIOR ELEVATIONS (COLOR)

SHEET

EXTERIOR ELEVATIONS (COLOR)

SHEET

EXTERIOR ELEVATIONS (COLOR)

SHEET

EXTERIOR ELEVATIONS (COLOR)

SHEET

EXTERIOR ELEVATIONS (COLOR)

SHEET

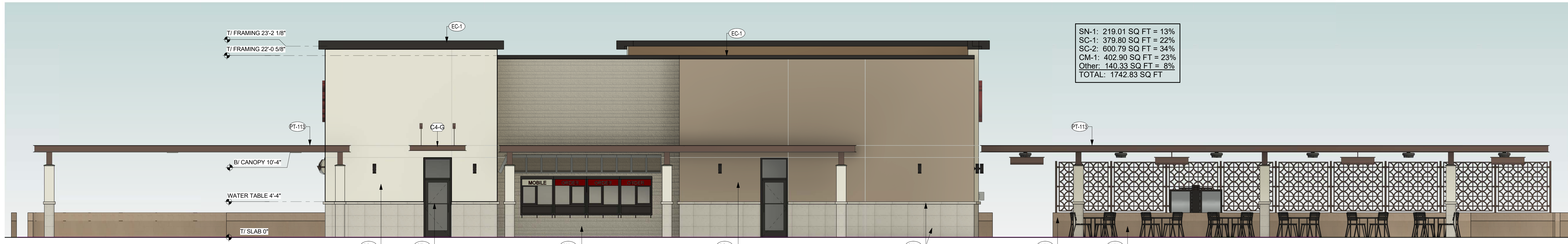
EXTERIOR ELEVATIONS (COLOR)

SHEET



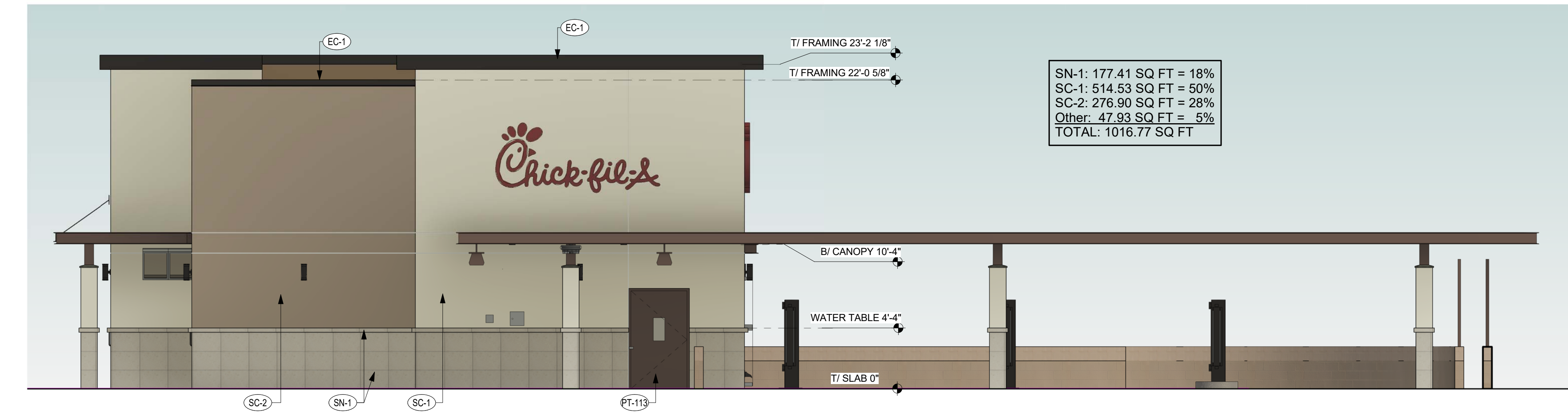
1 EXTERIOR ELEVATION- SOUTH
3/16" = 1'-0"

SN-1: 329.83 SQ FT = 19%
SC-1: 823.19 SQ FT = 46%
SC-2: 530.68 SQ FT = 30%
CM-1: 58.26 SQ FT = 3%
Other: 38.98 SQ FT = 2%
TOTAL: 1778.94 SQ FT



2 EXTERIOR ELEVATION- NORTH
3/16" = 1'-0"

SN-1: 219.01 SQ FT = 13%
SC-1: 379.80 SQ FT = 22%
SC-2: 600.79 SQ FT = 34%
CM-1: 402.90 SQ FT = 23%
Other: 140.33 SQ FT = 8%
TOTAL: 1742.83 SQ FT



3 EXTERIOR ELEVATION- WEST
3/16" = 1'-0"

SN-1: 177.41 SQ FT = 18%
SC-1: 514.53 SQ FT = 50%
SC-2: 276.90 SQ FT = 28%
Other: 47.93 SQ FT = 5%
TOTAL: 1016.77 SQ FT



4 EXTERIOR ELEVATION- EAST
3/16" = 1'-0"

SN-1: 85.03 SQ FT = 8%
SC-1: 417.94 SQ FT = 42%
SC-2: 49.14 SQ FT = 5%
CM-1: 398.99 SQ FT = 39%
Other: 53.99 SQ FT = 5%
TOTAL: 1005.09 SQ FT

FINISH SCHEDULE - EXTERIOR						
MARK	DESCRIPTION	MANUFACTURER	MODEL NAME	MODEL NUMBER	COLOR	NOTE
CM-1	HARD PLANK LAP SIDING	SHERWIN WILLIAMS			DE5T1	
CMU-1	8X8X16 CMU	TBD				MATCH LL SPEC
CMU-2	8X8X16 CMU	TBD				MATCH LL SPEC
CP-1	CANOPY METAL FASCIA					
CP-2	CANOPY METAL DECK				WHITE	SMOOTH WHITE, HIGH GLOSS
EC-1	PARAPET WALL COPING	DUROLAST / EXCEPTIONAL METALS			MIDNIGHT BRONZE	
PT-113	EXTERIOR PAINT	<varies>	<varies>		<varies>	FINISH: SEMI-GLOSS
SC-1	STUCCO	STO	POWERWALL		SW7566- WESTHIGHLAN D WHITE	FINISH: SAND MEDIUM
SC-2	STUCCO	STO	POWERWALL		SW7508- TAVERN TALUPE	FINISH: SAND MEDIUM
SN-1	STONE CLADDING	SHELLSTONE IMPORTS	NATURAL STONE TILE; MARBELLA; SIZE: 16" X 24" X 5/8"			MATCH LL SPEC
ST-1	STOREFRONT	YKK	YES 45		DARK BRONZE (MATT)	

ATTACHED CANOPY SCHEDULE						
Mark	Description	Count	Overall Width	Overall Depth	Tie Back Mounting (Offset From Top)	Integral Lighting
C1-C	Exterior Canopy	2	6'-4"	1'-0"	0"	No
C4-G	Exterior Canopy	1	7'-0"	4'-0"	2'-4"	Yes
Grand total		3				

CANOPY NOTES:
BUILDING MOUNTED CANOPIES - 8" THICK CANOPY - KYNAR FINISH OF STRUCTURE, FASCIA, & DECKING TO MATCH (CP-1)
COLUMN MOUNTED CANOPIES - 10" THICK CANOPY - FINISH OF STRUCTURE TO BE (CP-1) - FINISH OF DECKING TO BE (CP-2)

GENERAL NOTES
1. ALL SIGNAGE PROVIDED BY OTHERS
2. REF FLOOR PLAN AND WINDOW LEGEND FOR STOREFRONT INFORMATION

EXTERIOR FINISHES

(SN-1) STONE CLADDING
NATURAL STONE TILE; MARBELLA
COLOR: SHELLSTONE; HONES AND FILLED
MANUFACTURER: SHELLSTONE IMPORTS
SIZE: 16" X 24" X 5/8"

(SC-1) STUCCO SYSTEM- STO POWERWALL
COLOR: SW7566
"WESTHIGHLAND WHITE"
FINISH: SAND MEDIUM

(SC-2) STUCCO SYSTEM- STO POWERWALL
COLOR: SW7508
"TAVERN TALUPE"
FINISH: SAND MEDIUM

(EC-1) PREFINISHED METAL COPING
COLOR: MIDNIGHT BRONZE

(PT-113) EXTERIOR PAINT
COLOR: DUNN EDWARDS
DEA158 "NORTHERN TERRITORY"
FINISH: SEMI-GLOSS

(CMU-1) CMU WALL MATERIAL
COLOR: MATCH EXISTING
FINISH: MATCH EXISTING

(CMU-2) CMU WALL MATERIAL
COLOR: MATCH EXISTING
FINISH: MATCH EXISTING

(ST-1) STOREFRONT
COLOR: DARK BRONZE

(MS-1) METAL SCREEN
MANUFACTURER: MOZ DESIGNS
CUSTOM LASER CUT METAL
COLOR: DARK BRONZE

(CM-1) HARDPLANK LAP SIDING
MANUF: SHERWIN WILLIAMS
COLOR: SW6274 "DESTINY"

1/31/2023 4:59:48 PM Autodesk Docs://AZ_05202_Alma School & Southern_2022_9 DTO05202_Alma School & Southern_ARC.rvt 10-LE-05202-A-301C-EXTERIOR ELEVATIONS (COLOR)

A-301C