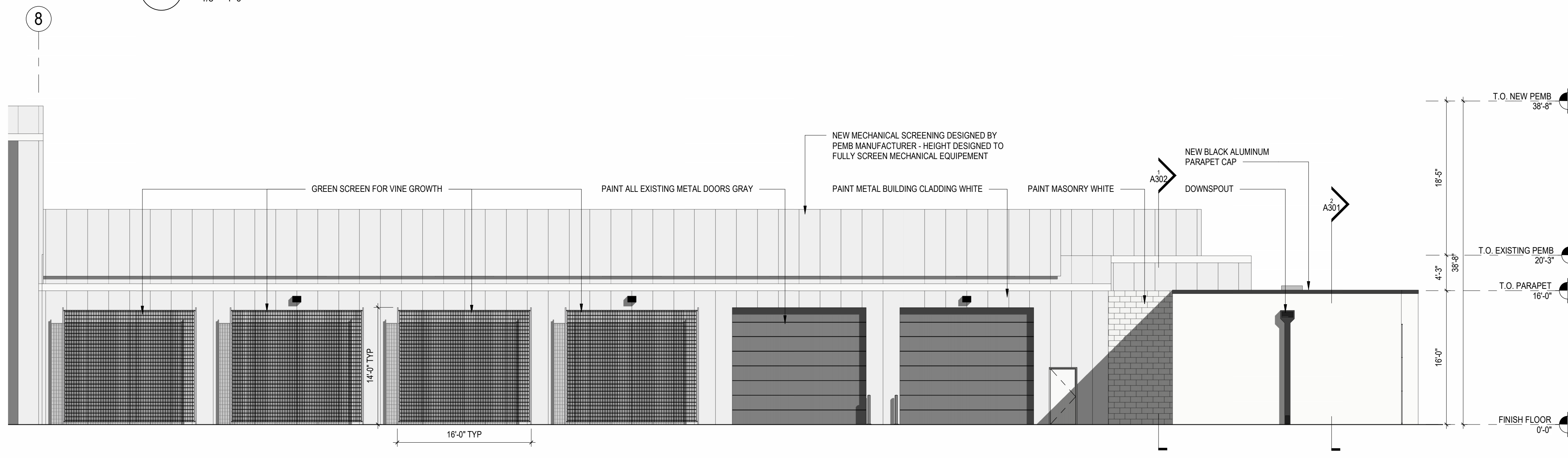


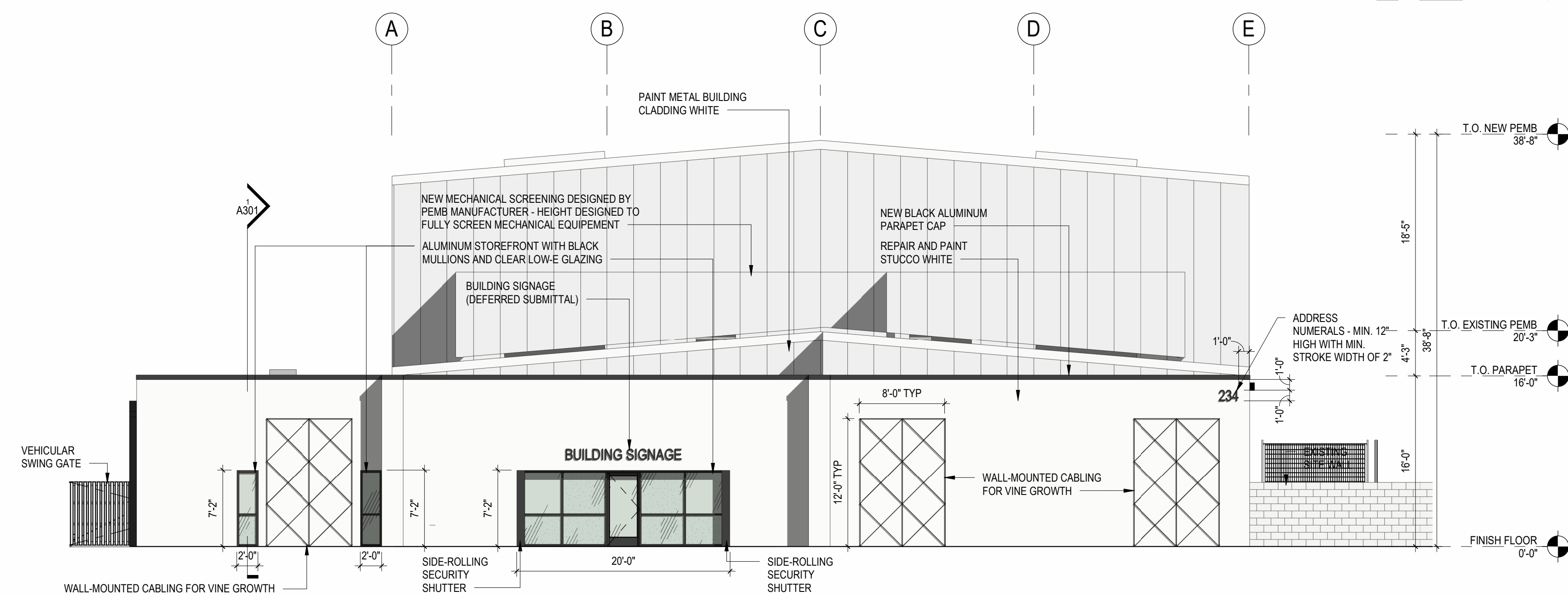
**3 SOUTH EXTERIOR ELEVATION PART 2**  
1/8" = 1'-0"

**MATERIALS BOARD**

- PARAPET CAP  
BLACK FINISH
- STUCCO  
REPAIRED AND PAINTED WHITE
- STOREFRONT  
BLACK ALUMINUM MULLIONS WITH CLEAR LOW-E GLAZING
- METAL BUILDING CLADDING  
REPAIRED AND PAINTED WHITE
- METAL BUILDING CLADDING  
PAINTED GRAY
- MASONRY  
PAINTED WHITE
- GREEN SCREEN  
GREEN WITH VINE GROWTH
- WALL-MOUNTED CABLING  
WITH VINE GROWTH



**2 SOUTH EXTERIOR ELEVATION PART 1**  
1/8" = 1'-0"



**1 EAST EXTERIOR ELEVATION**  
1/8" = 1'-0"

**DAVE DOWNING AND ASSOCIATES WAREHOUSE**

DAVE DOWNING AND ASSOCIATES  
234 SOUTH HIBBERT  
MESA, AZ 85210

**DELTA REVISIONS**

#	DESCRIPTION	DATE

**NOT FOR CONSTRUCTION**

PROJECT # 22128  
ISSUE DATE 04-29-2024  
ISSUE NAME THIRD SUBMITTAL  
PLOT DATE 4/24/2024 3:15:39 PM

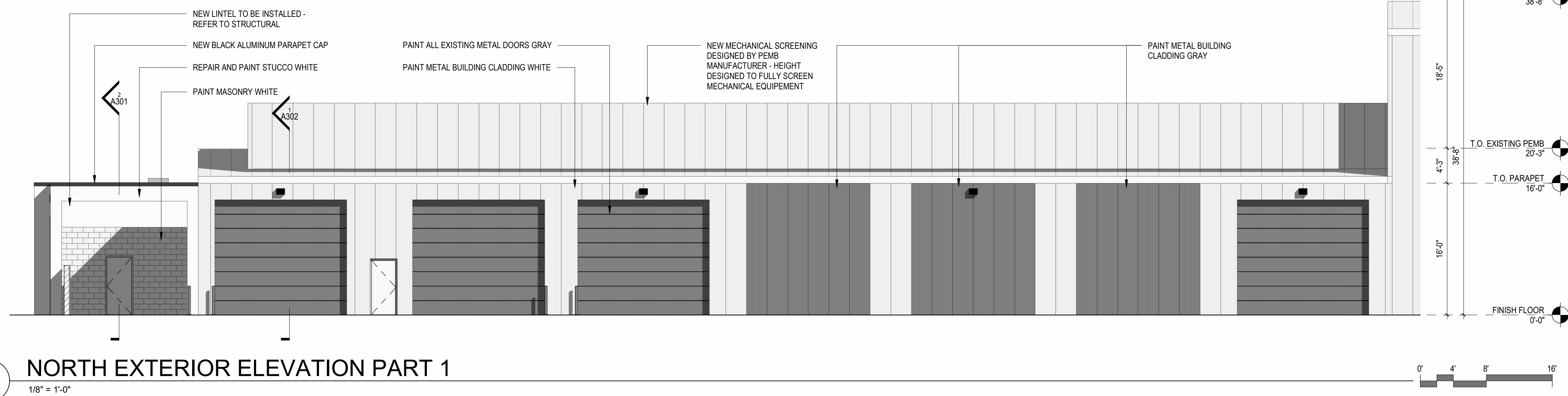
**A201**  
EXTERIOR ELEVATIONS



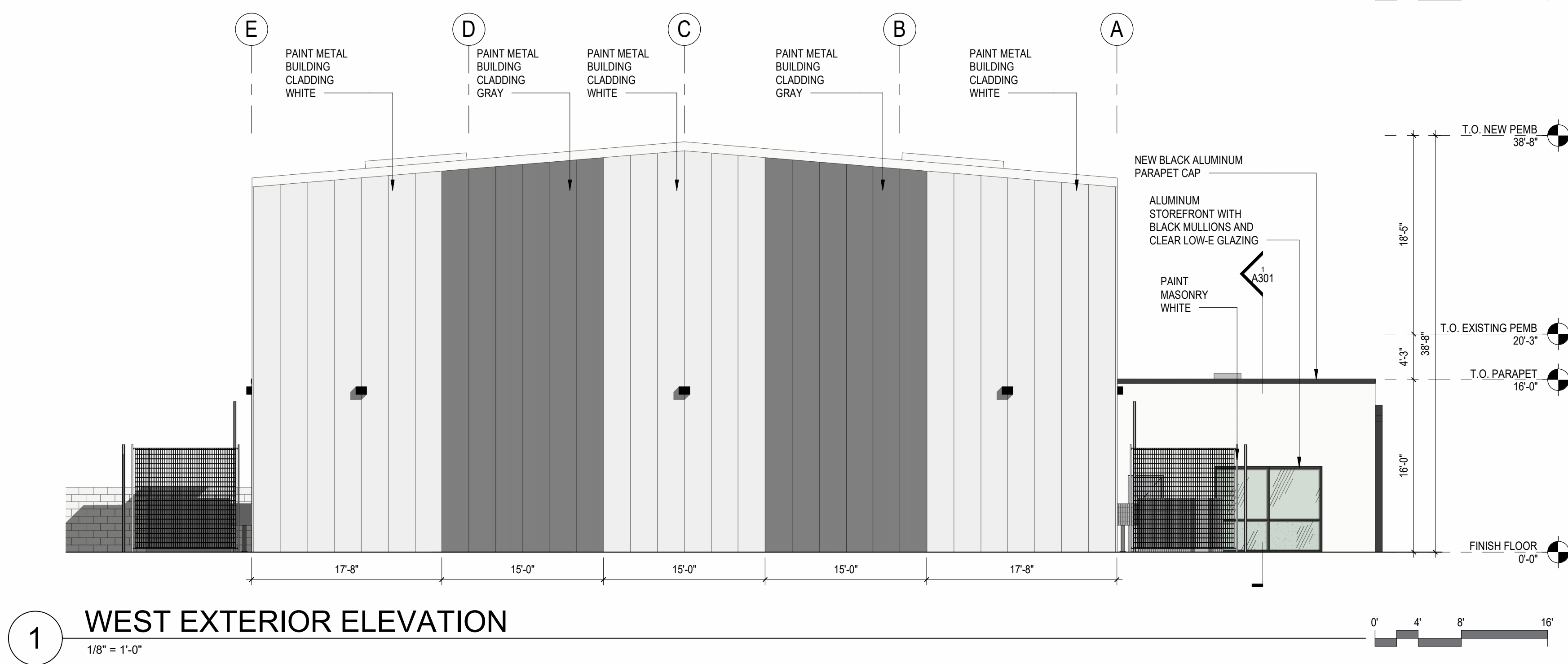
**3 NORTH EXTERIOR ELEVATION PART 2**  
1/8" = 1'-0"

**MATERIALS BOARD**

- PARAPET CAP  
BLACK FINISH
- STUCCO  
REPAIRED AND PAINTED WHITE
- STOREFRONT  
BLACK ALUMINUM MULLIONS WITH CLEAR LOW-E GLAZING
- METAL BUILDING CLADDING  
REPAIRED AND PAINTED WHITE
- METAL BUILDING CLADDING  
PAINTED GRAY
- MASONRY  
PAINTED WHITE
- GREEN SCREEN  
GREEN WITH VINE GROWTH
- WALL-MOUNTED CABLING  
WITH VINE GROWTH



**2 NORTH EXTERIOR ELEVATION PART 1**  
1/8" = 1'-0"



**1 WEST EXTERIOR ELEVATION**  
1/8" = 1'-0"

**DAVE DOWNING AND ASSOCIATES WAREHOUSE**

DAVE DOWNING AND ASSOCIATES  
234 SOUTH HIBBERT  
MESA, AZ 85210

**DELTA REVISIONS**

#	DESCRIPTION	DATE

**NOT FOR CONSTRUCTION**