



CEMENT BOARD	SW 7068 "GRIZZLE GRAY"	29%
STUCCO	SW 9170 "ACIER"	36%
STONE	EL DORADO MADRONA "CUT COARSE STONE"	35%
CEMENT BOARD	WOODTONE "WINCHESTER BROWN"	0%

2 SOUTH ELEVATION
1/8" = 1'-0"



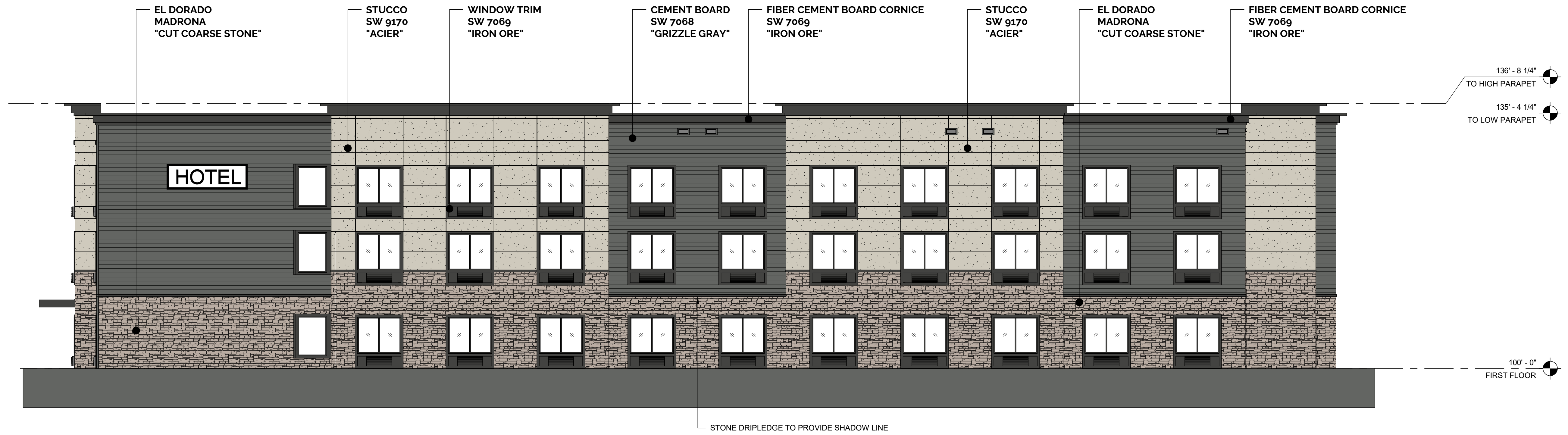
CEMENT BOARD	SW 7068 "GRIZZLE GRAY"	24%
STUCCO	SW 9170 "ACIER"	44%
STONE	EL DORADO MADRONA "CUT COARSE STONE"	28%
CEMENT BOARD	WOODTONE "WINCHESTER BROWN"	4%

1 NORTH ELEVATION
1/8" = 1'-0"

GENERAL NOTES:
1. PER CONDITION OF APPROVAL #7 OF ORD. NO. 4897, NOISE ATTENUATION MEASURES MUST BE INCORPORATED INTO THE DESIGN AND CONSTRUCTION OF THE BUILDING TO ACHIEVE A NOISE REDUCTION OF 25 DECIBELS. ADDITIONALLY, PER THE DMP DESIGN GUIDELINES, BUILDING WALL, ROOF AND WINDOW ASSEMBLIES SHALL ADDRESS METHODS TO ABSORB VIBRATION AND SOUND FROM AIRCRAFT. MINIMUM WINDOW STC RATINGS SHALL BE AN STC OF 30, WITH WALL AND ROOF ASSEMBLIES TO INCLUDE ATTENUATION MEASURES TO MEET THE MINIMUM 25 DECIBEL REDUCTION.

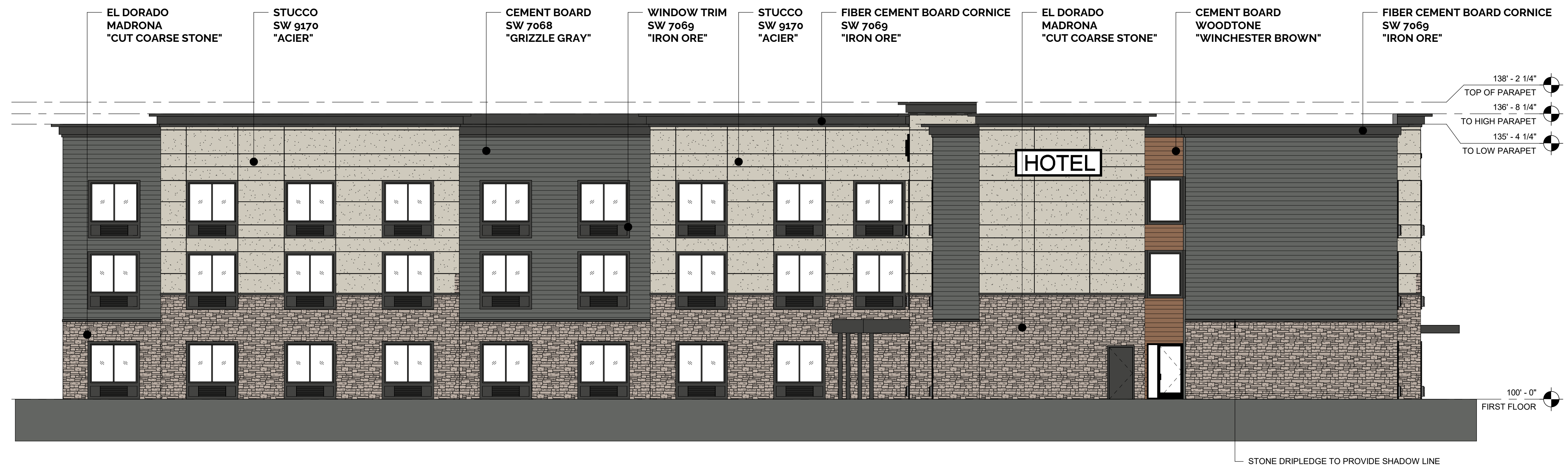
DESIGN REPRESENTATION ONLY - NOT FOR CONSTRUCTION
The building images shown are a representation of the current design intent only. The building images may not reflect variations in color, tone, hue, tint, shading, ambient light intensity, materials, texture, contrast, font style, construction variations required by building codes or inspectors, material availability or final design detailing.

CEMENT BOARD	SW 7068 "GRIZZLE GRAY"	36%
STUCCO	SW 9170 "ACIER"	33%
STONE	EL DORADO MADRONA "CUT COARSE STONE"	31%
CEMENT BOARD	WOODTONE "WINCHESTER BROWN"	0%



2 EAST ELEVATION
1/8" = 1'-0"

CEMENT BOARD	SW 7068 "GRIZZLE GRAY"	31%
STUCCO	SW 9170 "ACIER"	33%
STONE	EL DORADO MADRONA "CUT COARSE STONE"	33%
CEMENT BOARD	WOODTONE "WINCHESTER BROWN"	3%



1 WEST ELEVATION
1/8" = 1'-0"