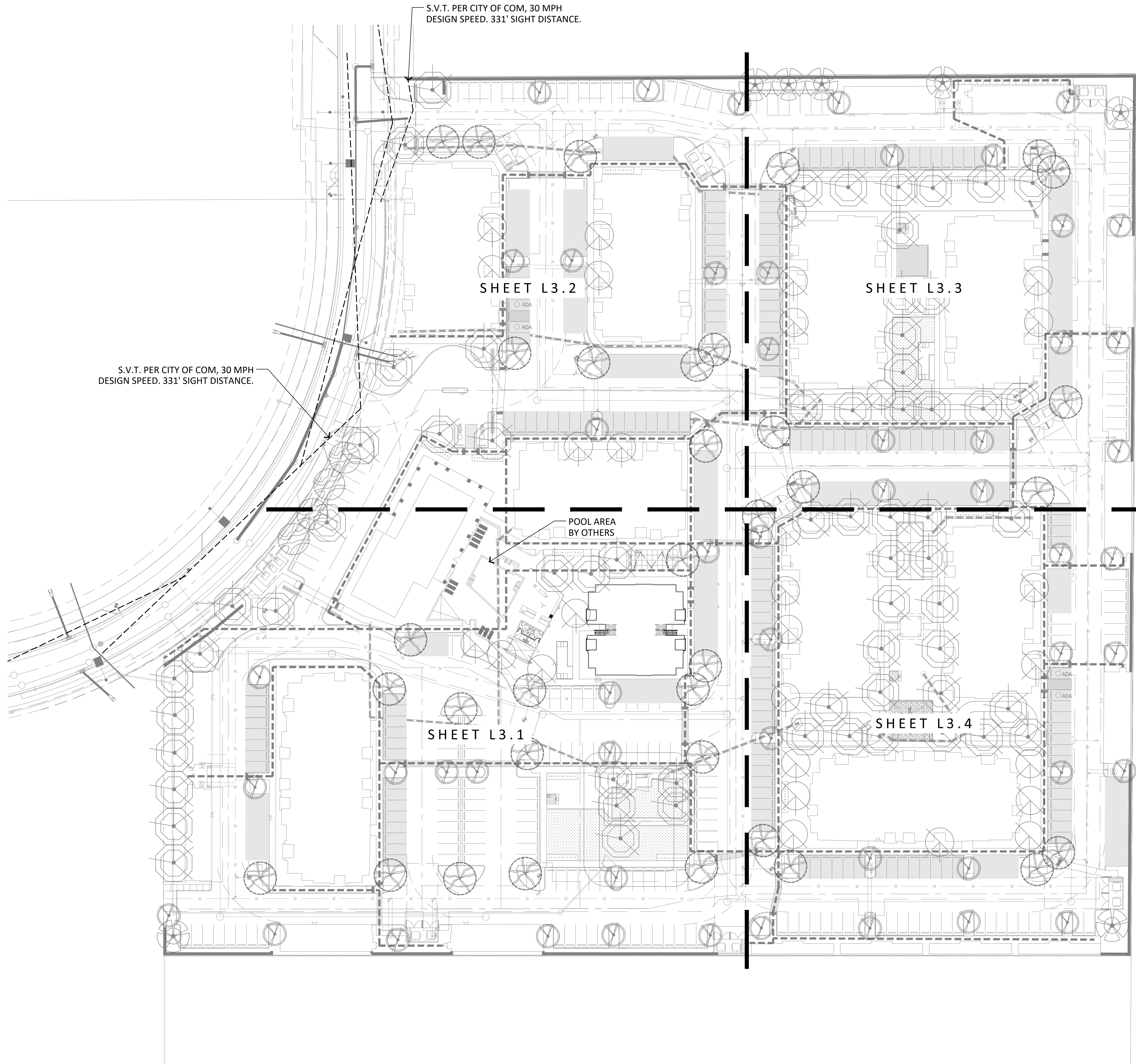


PLANT MATERIALS LEGEND

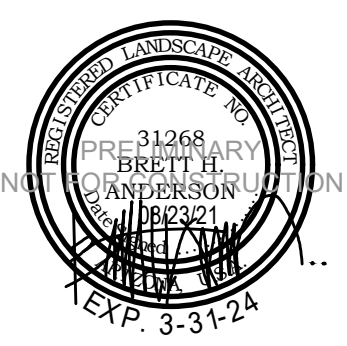
| Trees | Size | Quantity |
|--|---------|----------|
| Acacia aneura Mutiga Acacia | 15 gal. | 50 |
| Chalapa tashkinensis Chalapa | 15 gal. | 27 |
| Parkinsonia hyb. 'Desert Museum' Palo Verde | 24" box | 36 |
| Prosopis hybrid Thornless Mesquite | 15 gal. | 7 |
| Quercus virginiana 'Cathedral' Oak | 24" box | 63 |

| Extra Large Shrubs | Size | Quantity | Groundcovers | Size | Quantity |
|---|-------------|---|---|-------------|----------|
| Tecoma sp. 'Sparky' | 5 gal. | 198 | Eremophila prostrata 'Outback Sunrise' | 1 gal. | 918 |
| Sparky | | | Outback Sunrise Eremophila | | |
| Vauquelinia californica | 5 gal. | 51 | Lantana sp. | 1 gal. | 363 |
| Arizona Rosewood | | | 'New Gold' Lantana | | |
| Large Shrubs | Size | Quantity | Cacti/ Accents | Size | Quantity |
| Leucophyllum langmaniae 'Lynn's Legacy' | 5 gal. | 390 | Agave vilmoriniana | 5 gal. | 5 |
| Lynn's Legacy Sage | | | Octopus Agave | | |
| Simmondsia Chinensis Jojoba | 5 gal. | 39 | Bouteloua gracilis Blond Ambition | 1 gal. | 404 |
| Medium Shrubs | Size | Quantity | Echinocereus grusonii Golden Barrel | 5 gal. | 41 |
| Callistemon citrinus 'Little John' | 5 gal. | 459 | Fouquieria splendens Ocotillo | 8 cane min. | 5 |
| Little John | | | Hesperaloe parviflora 'Brakeights' Red Yucca | 3 gal. | 73 |
| Ruellia brittoniana | 1 gal. | 656 | Hesperaloe sp. Pink Parade | 3 gal. | 314 |
| Ruellia | | | Pink Parade Hesperaloe | | |
| Small Shrubs | Size | Quantity | Opuntia ficus indica Indian Fig Prickly Pear | 8 Pad Min. | 3 |
| Russelia equisetiformis Coral Fountain | 1 gal. | 147 | Opuntia santa rita Purple Prickly Pear | 5 gal. | 4 |
| Inerts | Quantity | Pedilanthus macrocarpus Slipper Plant | 5 gal. | 24 | |
| Decomposed Granite 3" Minus | 83,318 s.f. | Stenocereus thurberi Organ Pipe Cactus | 3 Arm, 4' Min. | 47 | |
| Express Carmel - See Detail 1, Sheet L7.1 | | Yucca pallida Pale Leaf Yucca | 5 gal. | 9 | |
| Turf- Mid-Iron Sod | 7,018 s.f. | | | | |
| See Detail 3, Sheet L7.2 | | | | | |
| Artificial Turf | 565 s.f. | | | | |
| See Detail 2, Sheet L7.2 | | | | | |
| Concrete Header Standard Color and Finish | | | | | |
| See Detail 2, Sheet L7.2 | | | | | |

- LANDSCAPE NOTES:**
- ALL QUANTITIES SHOWN ARE FOR THE LANDSCAPE ARCHITECT'S ESTIMATING AND SUBMITTAL PURPOSES ONLY AND THEREFORE ARE NOT GUARANTEED. THE CONTRACTOR SHALL CALCULATE QUANTITIES BASED ON THIS DRAWING SET AND SHALL CONTACT THE LANDSCAPE ARCHITECT WITH ANY DISCREPANCIES.
 - ALL TREE HEIGHTS AND CALIPERS SHALL COMPLY WITH THE LATEST AMENDED EDITION OF THE 'ARIZONA NURSERY ASSOCIATION - RECOMMENDED TREE SPECIFICATIONS' FOR THAT TYPE AND SIZE OF TREE. SEE SECTION 1903(6)(A), ZONING CODE.
 - LOCATION OF ALL TREES IN SVT TO BE SURVEYED AND STAKED BY CONTRACTOR. ONCE STAKED, THE LOCATIONS ARE TO BE APPROVED BY CITY TRANSPORTATION DEPARTMENT PRIOR TO INSTALLATION. ALL TREES LOCATED IN THE SVT ARE OF SPECIES THAT WHEN FULLY MATURE WILL HAVE A TRUNK DIAMETER OF LESS THAN 12". BY TIME OF SCHEDULED COMPLETION ALL TREES IN SVT TO BE PRUNED TO 8'-0" AS MEASURED FROM TOP OF CURB OR SIDEWALK. TREES WITH CANOPY OVER PAVEMENT SHALL BE PRUNED TO 14'-0" AS MEASURED FROM THE HIGHEST POINT OF ADJACENT PAVEMENT. ALL TREES LOCATED WITHIN SVT TO BE 36" BOX AND STANDARD TRUNKS.
 - ALL TREES AND SHRUBS LOCATED IN THE LINE-OF-SIGHT/SIGHT VISIBILITY TRIANGLES WILL BE MAINTAINED FOR A CLEAR AREA BETWEEN 3' AND 7'.
 - ALL BACKFLOW PREVENTERS 2" OR LARGER SHALL BE SCREENED WITH LANDSCAPE MATERIALS LOCATED WITHIN A 6' RADIUS OF THE BACKFLOW PREVENTER. ALL BACKFLOW PREVENTER THAN 2" SHALL BE PLACED IN A WIRE MESH BASKET AND PAINTED GREEN (CITY OF MESA HAS REQUESTED THE CHANGE TO GREEN TO DISCOURAGE THEFT).
 - ALL LANDSCAPE MATERIAL INSTALLED SHALL BE MAINTAINED BY OWNER/OR LESSEE IN ACCORDANCE WITH THE APPROVED LANDSCAPE PLAN.
 - ALL TRACTS SHALL BE OWNED AND MAINTAINED BY THE HOMEOWNER'S ASSOCIATION.
 - NO TREES ARE TO BE PLANTED WITHIN 6'-0" OF ANY WATER METER BOX PER CITY OF MESA DETAILS M-49.01, M-103.2, AND M-103.3.



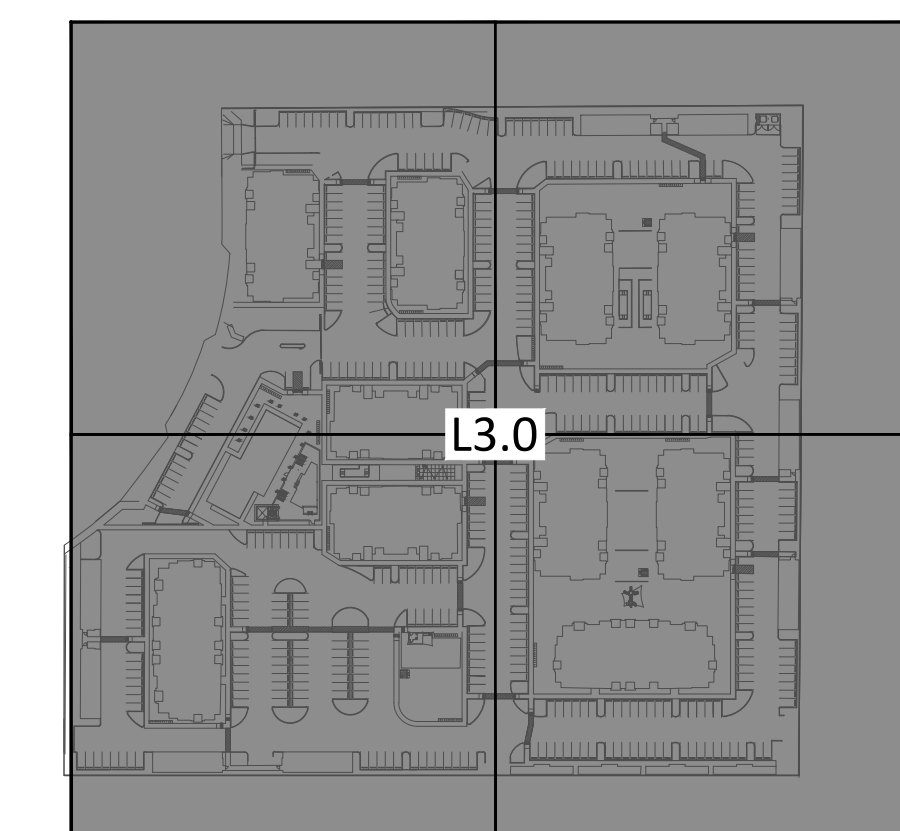
The Premiere at Eastmark 2.0
Multi-Family
Mesa, Arizona
Overall Planting Plan



- revisions
- △
 - △
 - △
 - △

- issued for
- design dev. ○
 - permit set ●
 - bid package ○
 - construction ○

date issued 08.23.2021
scale 1:40
drawn by jd, la, jc, sb
checked by ba
project number 217-002-19
sheet number





revisions

| | |
|---|--|
| △ | |
| △ | |
| △ | |

issued for

| | |
|--------------|---|
| design dev. | ○ |
| permit set | ● |
| bid package | ○ |
| construction | ○ |

date issued 08.23.2021

scale 1:20

drawn by jd, la, jc, sb

checked by ba

project number 217-002-19

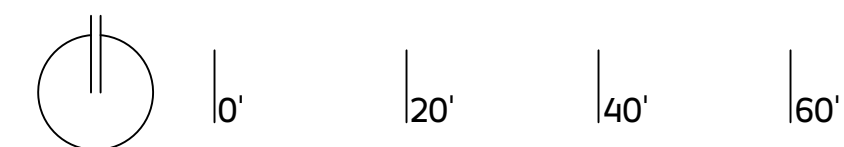
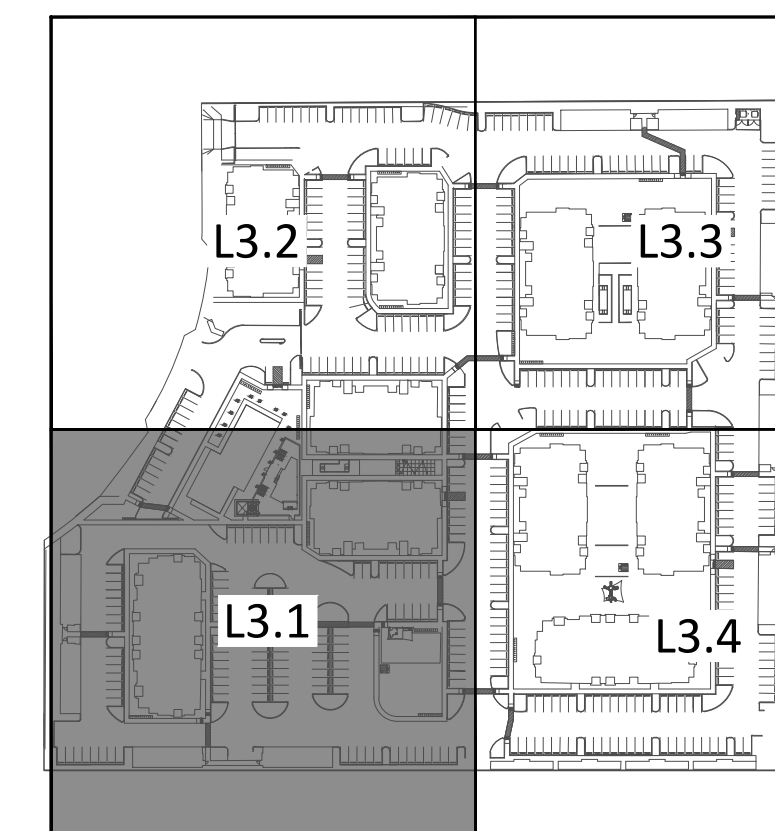
sheet number

PLANT MATERIALS LEGEND

| Trees | Size | Quantity |
|----------------------------|---------|----------|
| Acacia aneura | 15 gal. | 50 |
| Mulga Acacia | | |
| Chalapa tashkinensis | 15 gal. | 27 |
| Chalapa | | |
| Parkinsonia hyb. | 24" box | 36 |
| 'Desert Museum' Palo Verde | | |
| Prosopis hybrid | 15 gal. | 7 |
| Thornless Mesquite | | |
| Quercus virginiana | 24" box | 63 |
| 'Cathedral' Oak | | |

| Extra Large Shrubs | Size | Quantity | Groundcovers | Size | Quantity |
|---|-------------|-------------------------|--|-------------|----------|
| Tecoma sp. 'Sparky' | 5 gal. | 198 | Eremophila prostrata 'Outback Sunrise' | 1 gal. | 918 |
| Sparky | | | Outback Sunrise Eremophila | | |
| Vauquelinia californica | 5 gal. | 51 | Lantana sp. | 1 gal. | 363 |
| Arizona Rosewood | | | 'New Gold' Lantana | | |
| Large Shrubs | Size | Quantity | Cacti/ Accents | Size | Quantity |
| Leucophyllum langmaniae 'Lynn's Legacy' | 5 gal. | 390 | Agave vilmoriniana | 5 gal. | 5 |
| Lynn's Legacy Sage | | | Octopus Agave | | |
| Simmondsia Chinensis | 5 gal. | 39 | Bouteloua gracilis | 1 gal. | 404 |
| Joboba | | | Blond Ambition | | |
| Medium Shrubs | Size | Quantity | Echinocereus grusonii | 5 gal. | 41 |
| Callistemon citrinus 'Little John' | 5 gal. | 459 | Golden Barrel | | |
| Little John | | | Fouquieria splendens | 8 cane min. | 5 |
| Ruellia brittoniana | 1 gal. | 656 | Ocotillo | | |
| Ruellia | | | Hesperaloe parviflora | 3 gal. | 73 |
| Small Shrubs | Size | Quantity | 'Brakeights' Red Yucca | | |
| Russelia equisetiformis | 1 gal. | 147 | Hesperaloe sp. Pink Parade | 3 gal. | 314 |
| Coral Fountain | | | Pink Parade Hesperaloe | | |
| Inerts | Quantity | Opuntia ficus indica | 8 Pad Min. | 3 | |
| Decomposed Granite 3" Minus | 83,318 s.f. | Indian Fig Prickly Pear | | | |
| Express Carmel - See Detail 1, Sheet L7.1 | | Opuntia santa rita | 5 gal. | 4 | |
| Turf- Mid-Iron Sod | 7,018 s.f. | Purple Prickly Pear | | | |
| See Detail 3, Sheet L7.2 | | Pedilanthus macrocarpus | 5 gal. | 24 | |
| Artificial Turf | 565 s.f. | Slipper Plant | | | |
| Concrete Header Standard Color and Finish | | Stenocereus thurberi | 3 Arm, 4" Min. | 47 | |
| See Detail 2, Sheet L7.2 | | Organ Pipe Cactus | | | |
| | | Yucca pallida | 5 gal. | 9 | |
| | | Pale Leaf Yucca | | | |

- LANDSCAPE NOTES:
- ALL QUANTITIES SHOWN ARE FOR THE LANDSCAPE ARCHITECT'S ESTIMATING AND SUBMITTAL PURPOSES ONLY AND THEREFORE ARE NOT GUARANTEED. THE CONTRACTOR SHALL CALCULATE QUANTITIES BASED ON THIS DRAWING SET AND SHALL CONTACT THE LANDSCAPE ARCHITECT WITH ANY DISCREPANCIES.
 - ALL TREE HEIGHTS AND CALIPERS SHALL COMPLY WITH THE LATEST AMENDED EDITION OF THE 'ARIZONA NURSERY ASSOCIATION - RECOMMENDED TREE SPECIFICATIONS' FOR THAT TYPE AND SIZE OF TREE. SEE SECTION 1903(6)(A), ZONING CODE.
 - LOCATION OF ALL TREES IN SVT TO BE SURVEYED AND STAKED BY CONTRACTOR. ONCE STAKED, THE LOCATIONS ARE TO BE APPROVED BY CITY TRANSPORTATION DEPARTMENT PRIOR TO INSTALLATION. ALL TREES LOCATED IN THE SVT ARE OF SPECIES THAT WHEN FULLY MATURE WILL HAVE A TRUNK DIAMETER OF LESS THAN 12". BY TIME OF SCHEDULED COMPLETION ALL TREES IN SVT TO BE PRUNED TO 8'-0" AS MEASURED FROM TOP OF CURB OR SIDEWALK. TREES WITH CANOPY OVER PAVEMENT SHALL BE PRUNED TO 14'-0" AS MEASURED FROM THE HIGHEST POINT OF ADJACENT PAVEMENT. ALL TREES LOCATED WITHIN SVT TO BE 36" BOX AND STANDARD TRUNKS.
 - ALL TREES AND SHRUBS LOCATED IN THE LINE-OF-SIGHT/SIGHT VISIBILITY TRIANGLES WILL BE MAINTAINED FOR A CLEAR AREA BETWEEN 3' AND 7'.
 - ALL BACKFLOW PREVENTERS 2" OR LARGER SHALL BE SCREENED WITH LANDSCAPE MATERIALS LOCATED WITHIN A 6' RADIUS OF THE BACKFLOW PREVENTER. ALL BACKFLOW PREVENTER THAN 2" SHALL BE PLACED IN A WIRE MESH BASKET AND PAINTED GREEN (CITY OF MESA HAS REQUESTED THE CHANGE TO GREEN TO DISCOURAGE THEFT).
 - ALL LANDSCAPE MATERIAL INSTALLED SHALL BE MAINTAINED BY OWNER/OR LESSEE IN ACCORDANCE WITH THE APPROVED LANDSCAPE PLAN.
 - ALL TRACTS SHALL BE OWNED AND MAINTAINED BY THE HOMEOWNER'S ASSOCIATION.
 - NO TREES ARE TO BE PLANTED WITHIN 6'-0" OF ANY WATER METER BOX PER CITY OF MESA DETAILS M-49.01, M-103.2, AND M-103.3.



Key Map

Not To Scale

MATCHLINE - SEE SHEET L3.2

POOL AREA BY OTHERS

S.V.T. PER CITY OF COM, 30 MPH
DESIGN SPEED. 331' SIGHT DISTANCE.

MATCHLINE - SEE SHEET L3.4



PLANT MATERIALS LEGEND

| Trees | Size | Quantity |
|--|---------|----------|
| Acacia aneura Mullea Acacia | 15 gal. | 50 |
| Chitalpa tashkinensis Chitalpa | 15 gal. | 27 |
| Parkinsonia hyb. 'Desert Museum' Palo Verde | 24" box | 36 |
| Prosopis hybrid Thornless Mesquite | 15 gal. | 7 |
| Quercus virginiana 'Cathedral' Oak | 24" box | 63 |

| Extra Large Shrubs | Size | Quantity | Groundcovers | Size | Quantity |
|---|-------------|----------|---|----------------|----------|
| Tecoma sp. 'Sparky' | 5 gal. | 198 | Eremophila prostrata 'Outback Sunrise' | 1 gal. | 918 |
| Sparky | | | Outback Sunrise Eremophila | | |
| Vauquelinia californica Arizona Rosewood | 5 gal. | 51 | Lantana sp. | 1 gal. | 363 |
| Large Shrubs | Size | Quantity | 'New Gold' Lantana | | |
| Leucophyllum langmaniae 'Lynn's Legacy' | 5 gal. | 390 | Cacti/ Accents | Size | Quantity |
| Lynn's Legacy Sage | | | Agave vilmoriniana | 5 gal. | 5 |
| Simmondsia Chinensis Jojoba | 5 gal. | 39 | Octopus Agave | | |
| Medium Shrubs | Size | Quantity | Bouteloua gracilis Blond Ambition | 1 gal. | 404 |
| Callistemon citrinus 'Little John' | 5 gal. | 459 | Echinocereus grusonii Golden Barrel | 5 gal. | 41 |
| Little John | | | Fouquieria splendens Ocotillo | 8 cane min. | 5 |
| Ruellia brittoniana | 1 gal. | 656 | Hesperaloe parviflora 'Brakeights' Red Yucca | 3 gal. | 73 |
| Ruellia | | | Hesperaloe sp. Pink Parade | 3 gal. | 314 |
| Small Shrubs | Size | Quantity | Pink Parade Hesperaloe | | |
| Russelia equisetiformis Coral Fountain | 1 gal. | 147 | Opuntia ficus indica Indian Fig Prickly Pear | 8 Pad Min. | 3 |
| Inerts | Quantity | | Opuntia santa rita Purple Prickly Pear | 5 gal. | 4 |
| Decomposed Granite 3" Minus | 83,318 s.f. | | Pedilanthus macrocarpus Slipper Plant | 5 gal. | 24 |
| Express Carmel - See Detail 1, Sheet L7.1 | 7,018 s.f. | | Stenocereus thurberi Organ Pipe Cactus | 3 Arm, 4' Min. | 47 |
| Turf- Mid-Iron Sod | | | Yucca pallida | 5 gal. | 9 |
| See Detail 3, Sheet L7.2 | | | Pale Leaf Yucca | | |
| Artificial Turf | 565 s.f. | | | | |
| See Detail 2, Sheet L7.2 | | | | | |
| Concrete Header Standard Color and Finish | | | | | |
| See Detail 2, Sheet L7.2 | | | | | |

- No Symbol
- Express Carmel - See Detail 1, Sheet L7.1
- Turf- Mid-Iron Sod
- See Detail 3, Sheet L7.2
- Artificial Turf
- Concrete Header Standard Color and Finish
- See Detail 2, Sheet L7.2

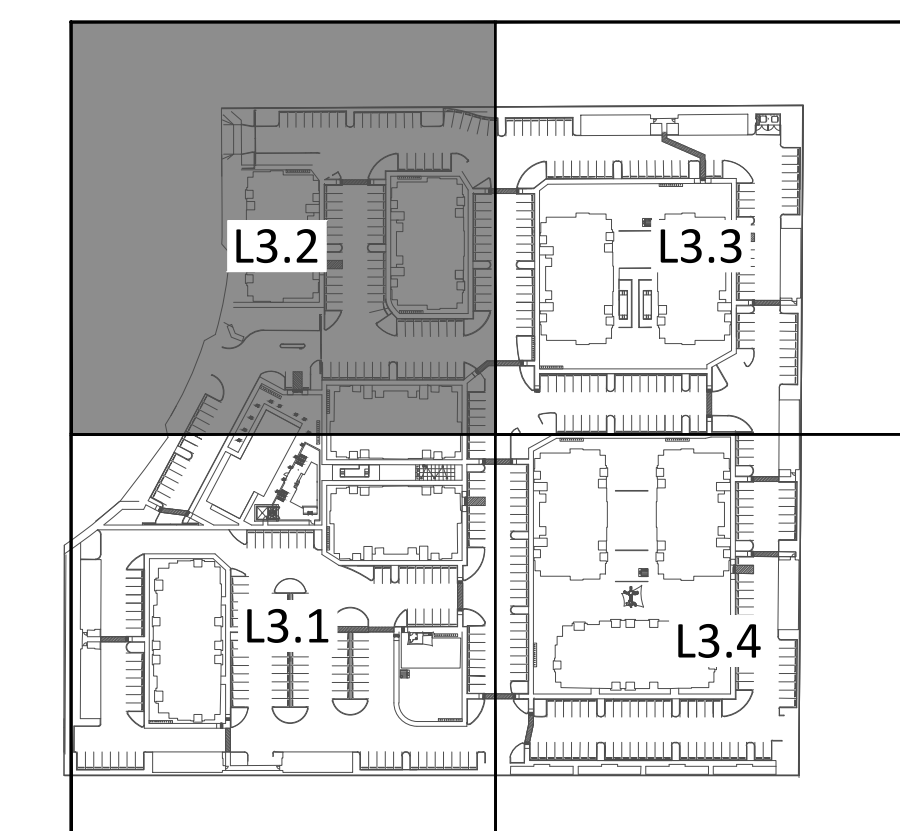
LANDSCAPE NOTES:

- ALL QUANTITIES SHOWN ARE FOR THE LANDSCAPE ARCHITECT'S ESTIMATING AND SUBMITTAL PURPOSES ONLY AND THEREFORE ARE NOT GUARANTEED. THE CONTRACTOR SHALL CALCULATE QUANTITIES BASED ON THIS DRAWING SET AND SHALL CONTACT THE LANDSCAPE ARCHITECT WITH ANY DISCREPANCIES.
- ALL TREE HEIGHTS AND CALIPERS SHALL COMPLY WITH THE LATEST AMENDED EDITION OF THE 'ARIZONA NURSERY ASSOCIATION - RECOMMENDED TREE SPECIFICATIONS' FOR THAT TYPE AND SIZE OF TREE. SEE SECTION 1903(6)(A), ZONING CODE.
- LOCATION OF ALL TREES IN SVT TO BE SURVEYED AND STAKED BY CONTRACTOR. ONCE STAKED, THE LOCATIONS ARE TO BE APPROVED BY CITY TRANSPORTATION DEPARTMENT PRIOR TO INSTALLATION. ALL TREES LOCATED IN THE SVT ARE OF SPECIES THAT WHEN FULLY MATURE WILL HAVE A TRUNK DIAMETER OF LESS THAN 12". BY TIME OF SCHEDULED COMPLETION ALL TREES IN SVT TO BE PRUNED TO 8'-0" AS MEASURED FROM TOP OF CURB OR SIDEWALK. TREES WITH CANOPY OVER PAVEMENT SHALL BE PRUNED TO 14'-0" AS MEASURED FROM THE HIGHEST POINT OF ADJACENT PAVEMENT. ALL TREES LOCATED WITHIN SVT TO BE 36" BOX AND STANDARD TRUNKS.
- ALL TREES AND SHRUBS LOCATED IN THE LINE-OF-SIGHT/SIGHT VISIBILITY TRIANGLES WILL BE MAINTAINED FOR A CLEAR AREA BETWEEN 3' AND 7'.
- ALL BACKFLOW PREVENTERS 2" OR LARGER SHALL BE SCREENED WITH LANDSCAPE MATERIALS LOCATED WITHIN A 6' RADIUS OF THE BACKFLOW PREVENTER. ALL BACKFLOW PREVENTER THAN 2" SHALL BE PLACED IN A WIRE MESH BASKET AND PAINTED GREEN (CITY OF MESA HAS REQUESTED THE CHANGE TO GREEN TO DISCOURAGE THEFT).
- ALL LANDSCAPE MATERIAL INSTALLED SHALL BE MAINTAINED BY OWNER/OR LESSEE IN ACCORDANCE WITH THE APPROVED LANDSCAPE PLAN.
- ALL TRACTS SHALL BE OWNED AND MAINTAINED BY THE HOMEOWNER'S ASSOCIATION.
- NO TREES ARE TO BE PLANTED WITHIN 6'-0" OF ANY WATER METER BOX PER CITY OF MESA DETAILS M-49.01, M-103.2, AND M-103.3.

MATCHLINE - SEE SHEET L3.3

S.V.T. PER CITY OF COM, 30 MPH
DESIGN SPEED. 331' SIGHT DISTANCE.

MATCHLINE - SEE SHEET L3.1



Key Map Not To Scale

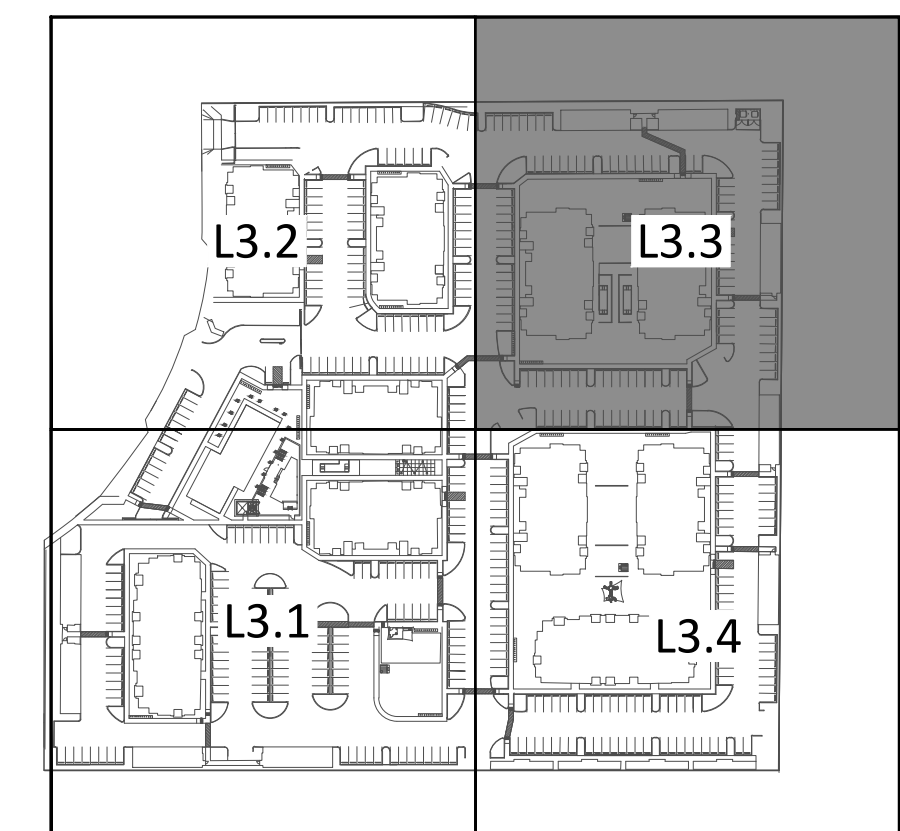
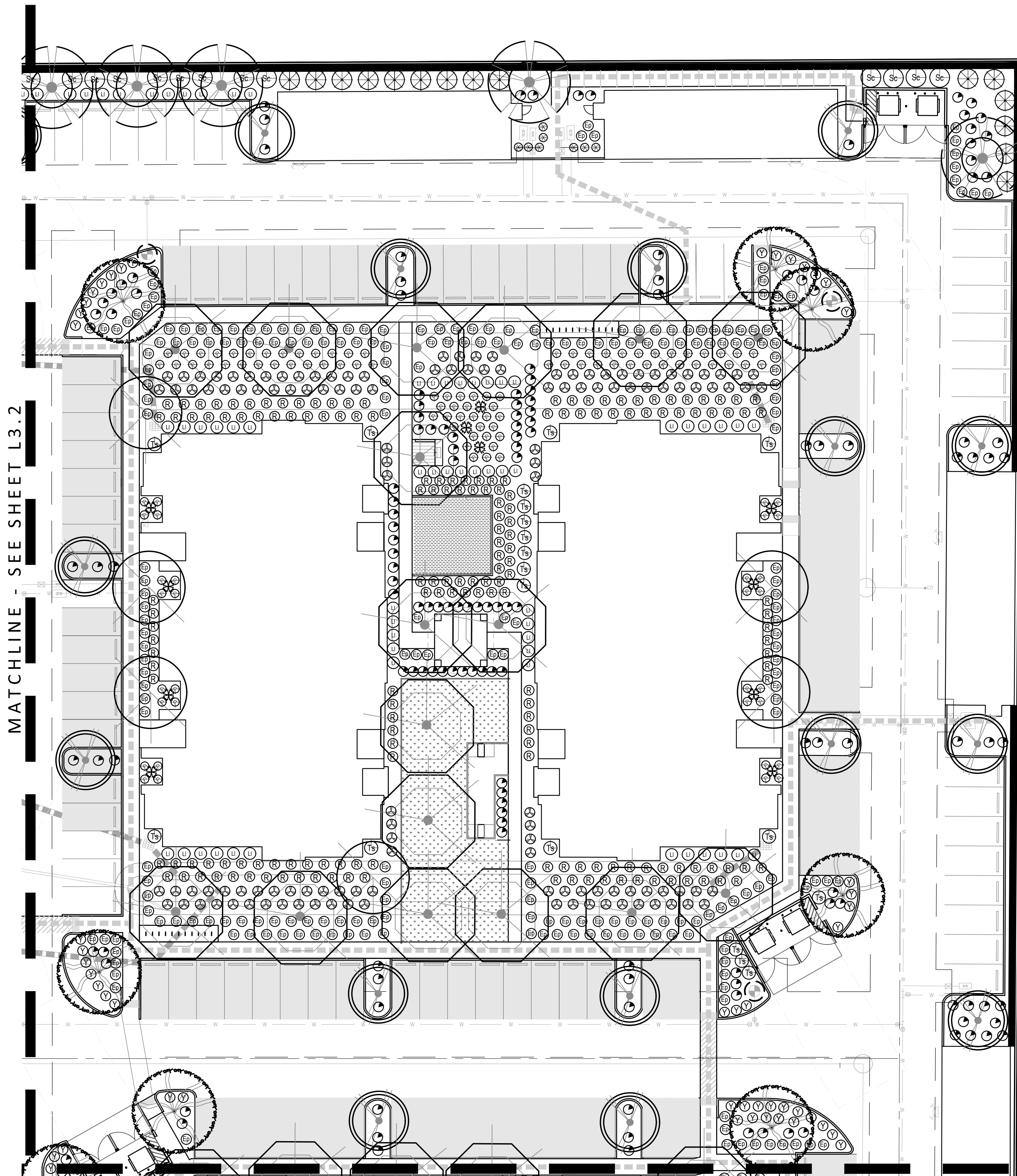
PLANT MATERIALS LEGEND

| Trees | Size | Quantity |
|--|---------|----------|
| Acacia aneura Mullea Acacia | 15 gal. | 50 |
| Chalapa tashkinensis Chalapa | 15 gal. | 27 |
| Parkinsonia hyb. "Desert Museum" Palo Verde | 24" box | 36 |
| Prosopis hybrid Thornless Mesquite | 15 gal. | 7 |
| Quercus virginiana "Cathedral" Oak | 24" box | 63 |

| Extra Large Shrubs | Size | Quantity | Groundcovers | Size | Quantity |
|---|-------------|---|---|-------------|----------|
| Tecoma sp. 'Sparky' | 5 gal. | 198 | Eremophila prostrata 'Outback Sunrise' | 1 gal. | 918 |
| Sparky | | | Outback Sunrise Eremophila | | |
| Vauquelinia californica | 5 gal. | 51 | Lantana sp. | 1 gal. | 363 |
| Arizona Rosewood | | | 'New Gold' Lantana | | |
| Large Shrubs | Size | Quantity | Cacti/ Accents | Size | Quantity |
| Leucophyllum langmaniae 'Lynn's Legacy' | 5 gal. | 390 | Agave vilmoriniana | 5 gal. | 5 |
| Lynn's Legacy Sage | | | Octopus Agave | | |
| Simmondsia Chinensis Jojoba | 5 gal. | 39 | Bouteloua gracilis Blond Ambition | 1 gal. | 404 |
| Medium Shrubs | Size | Quantity | Echinocereus grusonii Golden Barrel | 5 gal. | 41 |
| Callistemon citrinus 'Little John' | 5 gal. | 459 | Fouquieria splendens Ocotillo | 8 cane min. | 5 |
| Little John | | | Hesperaloe parviflora 'Brakeights' Red Yucca | 3 gal. | 73 |
| Ruellia brittoniana | 1 gal. | 656 | Hesperaloe sp. Pink Parade | 3 gal. | 314 |
| Ruellia | | | Pink Parade Hesperaloe | | |
| Small Shrubs | Size | Quantity | Opuntia ficus indica | 8 Pad Min. | 3 |
| Russelia equisetiformis Coral Fountain | 1 gal. | 147 | Indian Fig Prickly Pear | | |
| Inerts | Quantity | Opuntia santa rita | 5 gal. | 4 | |
| Decomposed Granite 3" Minus | 83,318 s.f. | Purple Prickly Pear | | | |
| Express Carmel - See Detail 1, Sheet L7.1 | | Pedilanthus macrocarpus Slipper Plant | 5 gal. | 24 | |
| Turf- Mid-Iron Sod See Detail 3, Sheet L7.2 | 7,018 s.f. | Stenocereus thurberi Organ Pipe Cactus | 3 Arm, 4" Min. | 47 | |
| Artificial Turf | 565 s.f. | Yucca pallida | 5 gal. | 9 | |
| Concrete Header Standard Color and Finish See Detail 2, Sheet L7.2 | | Pale Leaf Yucca | | | |

LANDSCAPE NOTES:

- ALL QUANTITIES SHOWN ARE FOR THE LANDSCAPE ARCHITECT'S ESTIMATING AND SUBMITTAL PURPOSES ONLY AND THEREFORE ARE NOT GUARANTEED. THE CONTRACTOR SHALL CALCULATE QUANTITIES BASED ON THIS DRAWING SET AND SHALL CONTACT THE LANDSCAPE ARCHITECT WITH ANY DISCREPANCIES.
- ALL TREE HEIGHTS AND CALIPERS SHALL COMPLY WITH THE LATEST AMENDED EDITION OF THE 'ARIZONA NURSERY ASSOCIATION - RECOMMENDED TREE SPECIFICATIONS' FOR THAT TYPE AND SIZE OF TREE. SEE SECTION 1903(6)(A), ZONING CODE.
- LOCATION OF ALL TREES IN SVT TO BE SURVEYED AND STAKED BY CONTRACTOR. ONCE STAKED, THE LOCATIONS ARE TO BE APPROVED BY CITY TRANSPORTATION DEPARTMENT PRIOR TO INSTALLATION. ALL TREES LOCATED IN THE SVT ARE OF SPECIES THAT WHEN FULLY MATURE WILL HAVE A TRUNK DIAMETER OF LESS THAN 12". BY TIME OF SCHEDULED COMPLETION ALL TREES IN SVT TO BE PRUNED TO 8'-0" AS MEASURED FROM TOP OF CURB OR SIDEWALK. TREES WITH CANOPY OVER PAVEMENT SHALL BE PRUNED TO 14'-0" AS MEASURED FROM THE HIGHEST POINT OF ADJACENT PAVEMENT. ALL TREES LOCATED WITHIN SVT TO BE 36" BOX AND STANDARD TRUNKS.
- ALL TREES AND SHRUBS LOCATED IN THE LINE-OF-SIGHT/SIGHT VISIBILITY TRIANGLES WILL BE MAINTAINED FOR A CLEAR AREA BETWEEN 3' AND 7'.
- ALL BACKFLOW PREVENTERS 2" OR LARGER SHALL BE SCREENED WITH LANDSCAPE MATERIALS LOCATED WITHIN A 6' RADIUS OF THE BACKFLOW PREVENTER. ALL BACKFLOW PREVENTER 2" SHALL BE PLACED IN A WIRE MESH BASKET AND PAINTED GREEN (CITY OF MESA HAS REQUESTED THE CHANGE TO GREEN TO DISCOURAGE THEFT).
- ALL LANDSCAPE MATERIAL INSTALLED SHALL BE MAINTAINED BY OWNER/OR LESSEE IN ACCORDANCE WITH THE APPROVED LANDSCAPE PLAN.
- ALL TRACTS SHALL BE OWNED AND MAINTAINED BY THE HOMEOWNER'S ASSOCIATION.
- NO TREES ARE TO BE PLANTED WITHIN 6'-0" OF ANY WATER METER BOX PER CITY OF MESA DETAILS M-49.01, M-103.2, AND M-103.3.



revisions

| | |
|---|--|
| △ | |
| △ | |
| △ | |
| △ | |

issued for

| | |
|--------------|---|
| design dev. | ○ |
| permit set | ● |
| bid package | ○ |
| construction | ○ |

date issued 08.23.2021

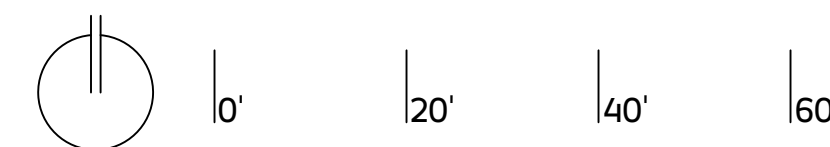
scale 1:20

drawn by jd, la, jc, sb

checked by ba

project number 217-002-19

sheet number



Key Map

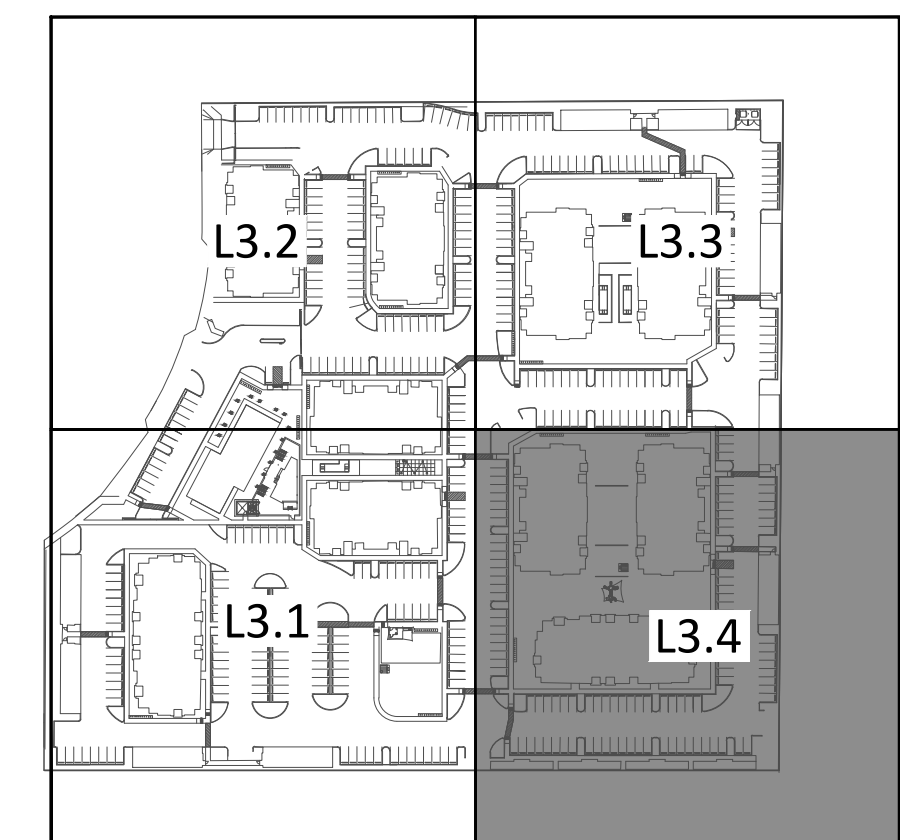
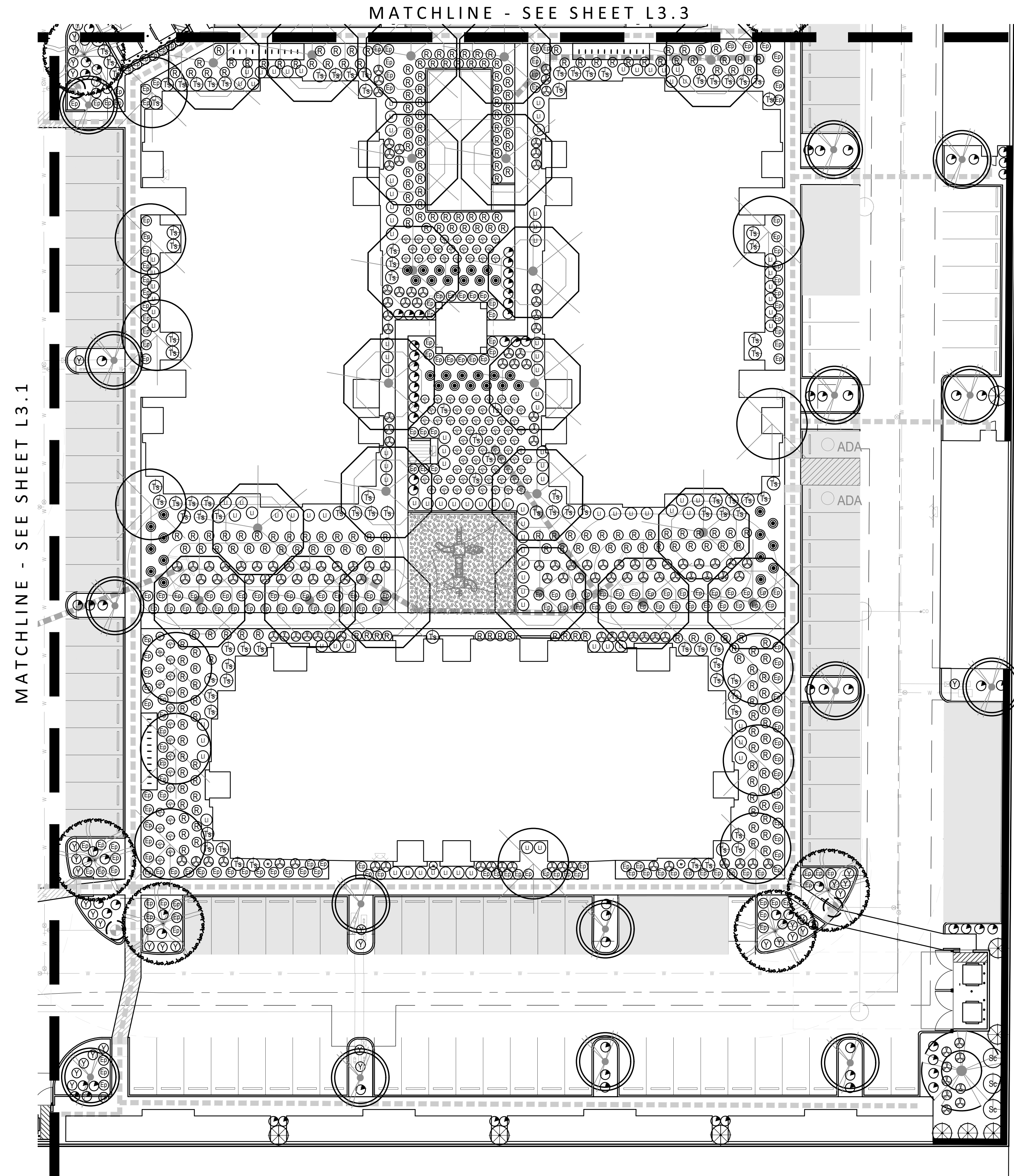
Not To Scale ↑

PLANT MATERIALS LEGEND

| Trees | Size | Quantity |
|--|---------|----------|
| Acacia aneura Mulga Acacia | 15 gal. | 50 |
| Chalipa tashkinensis Chalipa | 15 gal. | 27 |
| Parkinsonia hyb. 'Desert Museum' Palo Verde | 24" box | 36 |
| Prosopis hybrid Thornless Mesquite | 15 gal. | 7 |
| Quercus virginiana 'Cathedral' Oak | 24" box | 63 |

| Extra Large Shrubs | Size | Quantity | Groundcovers | Size | Quantity |
|--|-------------|---|---|-------------|----------|
| Tecoma sp. 'Sparky' | 5 gal. | 198 | Eremophila prostrata 'Outback Sunrise' | 1 gal. | 918 |
| Sparky | | | Outback Sunrise Eremophila | | |
| Vauquelinia californica Arizona Rosewood | 5 gal. | 51 | Lantana sp. 'New Gold' Lantana | 1 gal. | 363 |
| Large Shrubs | Size | Quantity | Cacti/ Accents | Size | Quantity |
| Leucophyllum langmaniae 'Lynn's Legacy' | 5 gal. | 390 | Agave vilmoriniana Octopus Agave | 5 gal. | 5 |
| Lynn's Legacy Sage | | | Bouteloua gracilis Blond Ambition | 1 gal. | 404 |
| Simmondsia Chinensis Jojoba | 5 gal. | 39 | Echinocereus grusonii Golden Barrel | 5 gal. | 41 |
| Medium Shrubs | Size | Quantity | Fouquieria splendens Ocotillo | 8 cane min. | 5 |
| Callistemon citrinus 'Little John' | 5 gal. | 459 | Hesperaloe parviflora 'Brakeights' Red Yucca | 3 gal. | 73 |
| Little John | | | Hesperaloe sp. Pink Parade | 3 gal. | 314 |
| Ruellia brittoniana Ruellia | 1 gal. | 656 | Pink Parade Hesperaloe | | |
| Small Shrubs | Size | Quantity | Opuntia ficus indica Indian Fig Prickly Pear | 8 Pad Min. | 3 |
| Russelia equisetiformis Coral Fountain | 1 gal. | 147 | Opuntia santa rita Purple Prickly Pear | 5 gal. | 4 |
| Inerts | Quantity | Pedilanthus macrocarpus Slipper Plant | 5 gal. | 24 | |
| Decomposed Granite 3" Minus | 83,318 s.f. | Stenocereus thurberi Organ Pipe Cactus | 3 Arm, 4" Min. | 47 | |
| Express Carmel - See Detail 1, Sheet L7.1 | 7,018 s.f. | Yucca pallida Pale Leaf Yucca | 5 gal. | 9 | |
| Turf- Mid-Iron Sod See Detail 3, Sheet L7.2 | 565 s.f. | | | | |
| Artificial Turf See Detail 2, Sheet L7.2 | | | | | |

- LANDSCAPE NOTES:**
- ALL QUANTITIES SHOWN ARE FOR THE LANDSCAPE ARCHITECT'S ESTIMATING AND SUBMITTAL PURPOSES ONLY AND THEREFORE ARE NOT GUARANTEED. THE CONTRACTOR SHALL CALCULATE QUANTITIES BASED ON THIS DRAWING SET AND SHALL CONTACT THE LANDSCAPE ARCHITECT WITH ANY DISCREPANCIES.
 - ALL TREE HEIGHTS AND CALIPERS SHALL COMPLY WITH THE LATEST AMENDED EDITION OF THE 'ARIZONA NURSERY ASSOCIATION - RECOMMENDED TREE SPECIFICATIONS' FOR THAT TYPE AND SIZE OF TREE. SEE SECTION 1903(6)(A), ZONING CODE.
 - LOCATION OF ALL TREES IN SVT TO BE SURVEYED AND STAKED BY CONTRACTOR. ONCE STAKED, THE LOCATIONS ARE TO BE APPROVED BY CITY TRANSPORTATION DEPARTMENT PRIOR TO INSTALLATION. ALL TREES LOCATED IN THE SVT ARE OF SPECIES THAT WHEN FULLY MATURE WILL HAVE A TRUNK DIAMETER OF LESS THAN 12". BY TIME OF SCHEDULED COMPLETION ALL TREES IN SVT TO BE PRUNED TO 8'-0" AS MEASURED FROM TOP OF CURB OR SIDEWALK. TREES WITH CANOPY OVER PAVEMENT SHALL BE PRUNED TO 14'-0" AS MEASURED FROM THE HIGHEST POINT OF ADJACENT PAVEMENT. ALL TREES LOCATED WITHIN SVT TO BE 36" BOX AND STANDARD TRUNKS.
 - ALL TREES AND SHRUBS LOCATED IN THE LINE-OF-SIGHT/SIGHT VISIBILITY TRIANGLES WILL BE MAINTAINED FOR A CLEAR AREA BETWEEN 3' AND 7'.
 - ALL BACKFLOW PREVENTERS 2" OR LARGER SHALL BE SCREENED WITH LANDSCAPE MATERIALS LOCATED WITHIN A 6' RADIUS OF THE BACKFLOW PREVENTER. ALL BACKFLOW PREVENTER THAN 2" SHALL BE PLACED IN A WIRE MESH BASKET AND PAINTED GREEN (CITY OF MESA HAS REQUESTED THE CHANGE TO GREEN TO DISCOURAGE THEFT).
 - ALL LANDSCAPE MATERIAL INSTALLED SHALL BE MAINTAINED BY OWNER/OR LESSEE IN ACCORDANCE WITH THE APPROVED LANDSCAPE PLAN.
 - ALL TRACTS SHALL BE OWNED AND MAINTAINED BY THE HOMEOWNER'S ASSOCIATION.
 - NO TREES ARE TO BE PLANTED WITHIN 6'-0" OF ANY WATER METER BOX PER CITY OF MESA DETAILS M-49.01, M-103.2, AND M-103.3.



revisions

| | |
|---|--|
| △ | |
| △ | |
| △ | |
| △ | |

issued for

| | |
|--------------|---|
| design dev. | ○ |
| permit set | ● |
| bid package | ○ |
| construction | ○ |

| | |
|----------------|----------------|
| date issued | 08.23.2021 |
| scale | 1:20 |
| drawn by | jd, la, jc, sb |
| checked by | ba |
| project number | 217-002-19 |
| sheet number | |