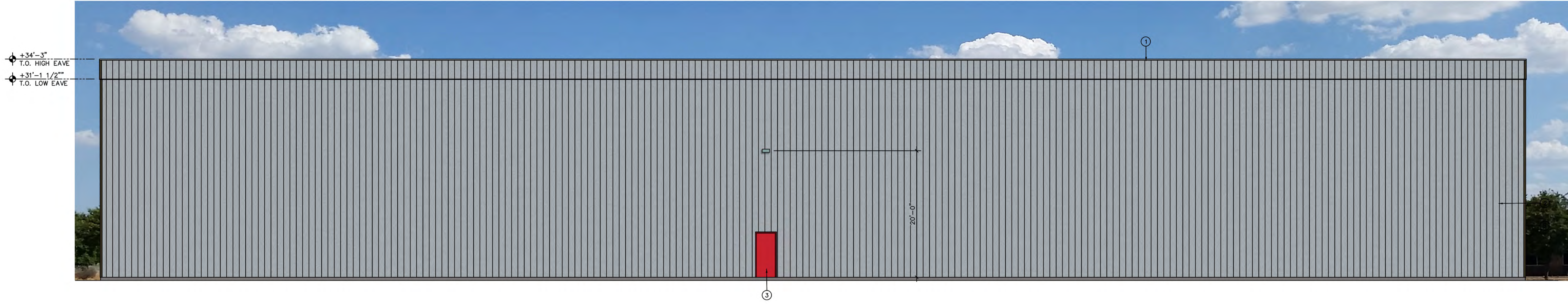
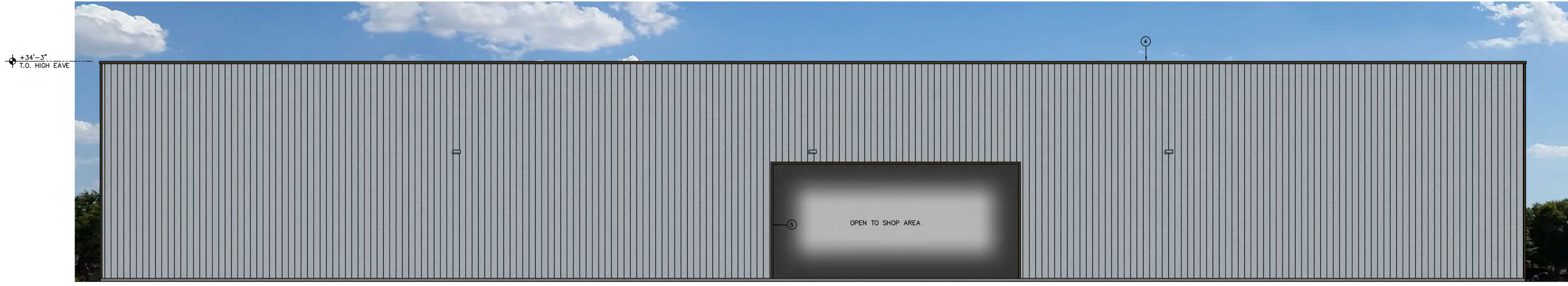


This drawing is the property of the Architect and unauthorized reproduction is prohibited under the Copyright Act. Electronic files when provided are instruments of service and the sole property of Hitchhens Associates Architects. No alteration or reproduction shall be made without written authorization from Hitchhens Associates Architects. The Contractor shall check and verify all dimensions and report any discrepancies to the Architect prior to construction. Do not scale this drawing.



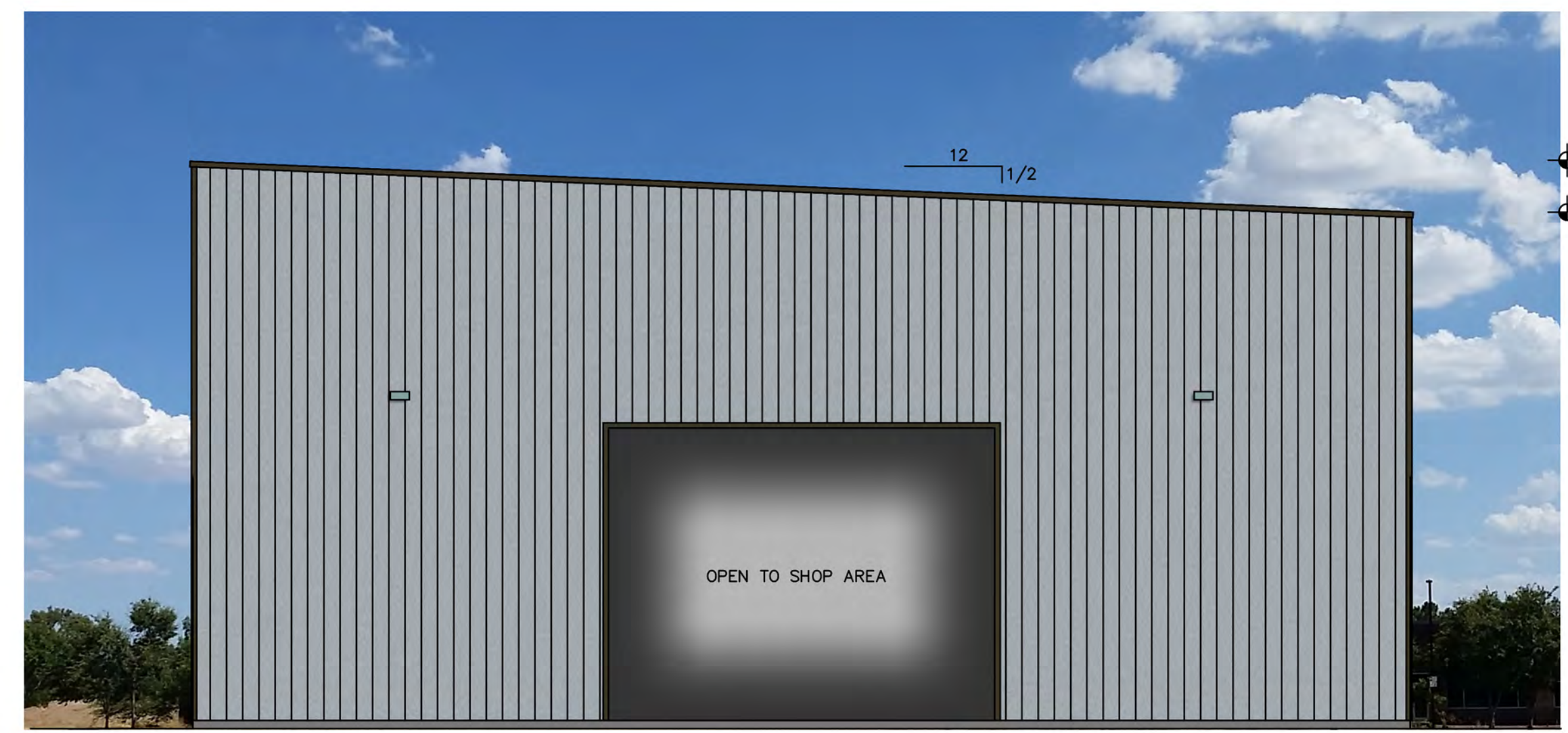
WEST ELEVATION

SCALE: 1/8" = 1'-0"



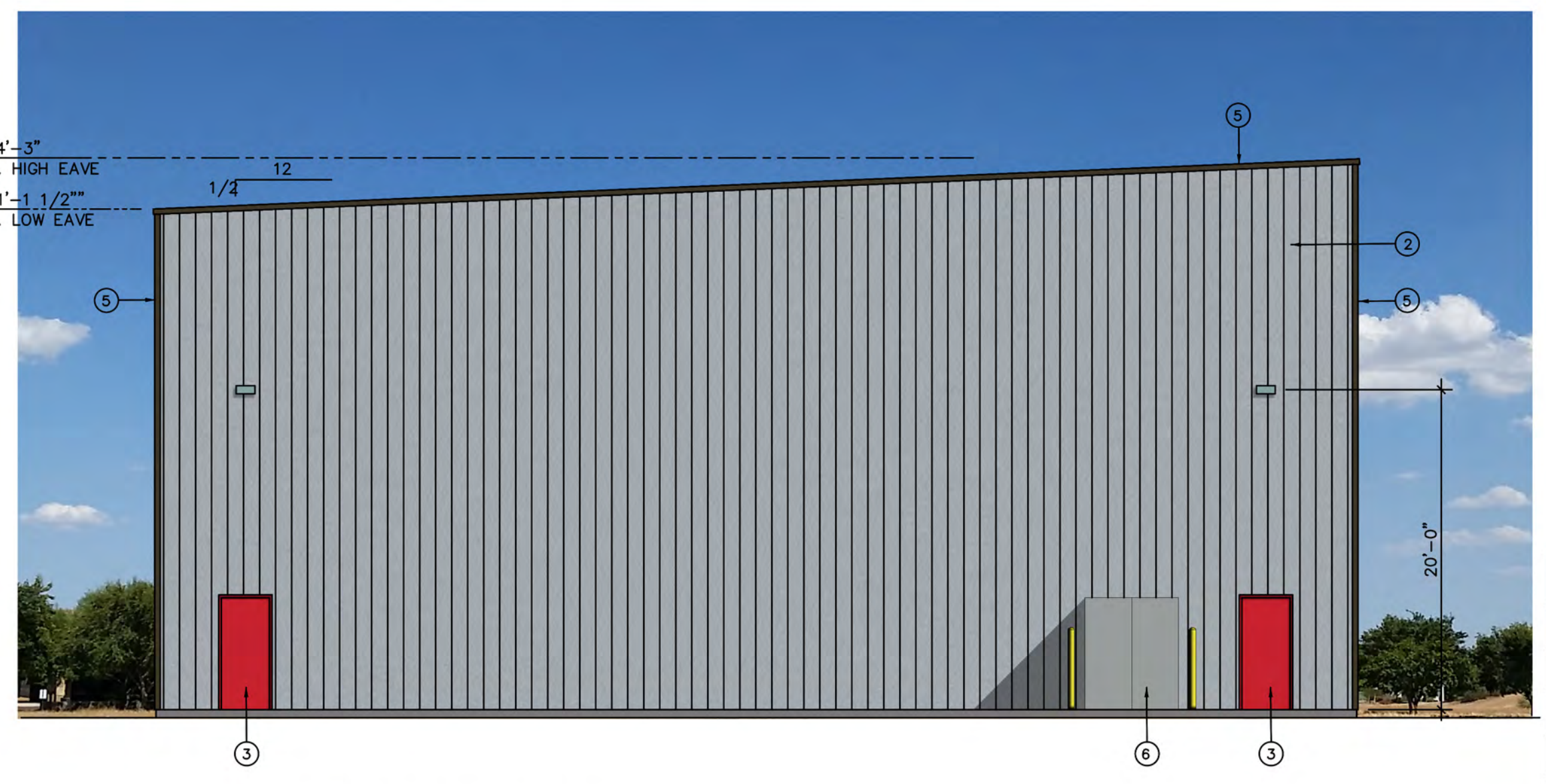
EAST ELEVATION

SCALE: 1/8" = 1'-0"



NORTH ELEVATION

SCALE: 1/8" = 1'-0"

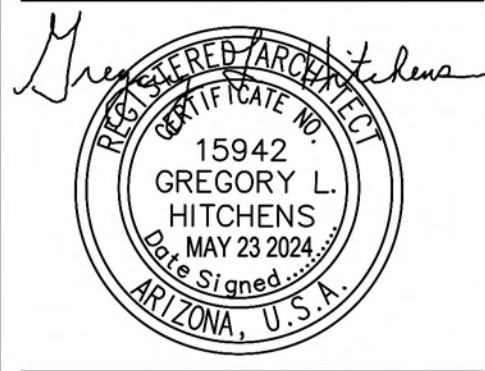


SOUTH ELEVATION

SCALE: 1/8" = 1'-0"

MATERIAL/COLOR SCHEDULE:	
① METAL ROOF	AEP SPAN NU-WAVE CORRUGATED METAL SIDING COLOR: ZINCALUME PLUS
② VERTICAL METAL SIDING	AEP SPAN NU-WAVE CORRUGATED METAL SIDING COLOR: ZINCALUME PLUS
③ DOORS	SHERWIN WILLIAMS SW 6568 - REAL RED
④ METAL CAP FLASHING	COLOR: DARK BRONZE
⑤ METAL TRIM	COLOR: DARK BRONZE
⑥ S.E.S	SHERWIN WILLIAMS SW 7860 - EARL GRAY

HITCHCHENS ASSOCIATES ARCHITECTS
 3126 N. LOS ALAMOS
 MESA, ARIZONA 85213
 TELEPHONE: 602.615.0204



REVISIONS

NEW BUILDING FOR
 ABLE STEEL FABRICATORS
 4150 E. Quartz Circle
 Mesa, Arizona

PROJECT NO: 22303
 DRAWN BY: GLH
 DATE: 5-23-2024