



Design Review Board



DRB24-00791

Downtown Façade

101 W Main

Emily Johnson, Planner I

October 8, 2024



Request

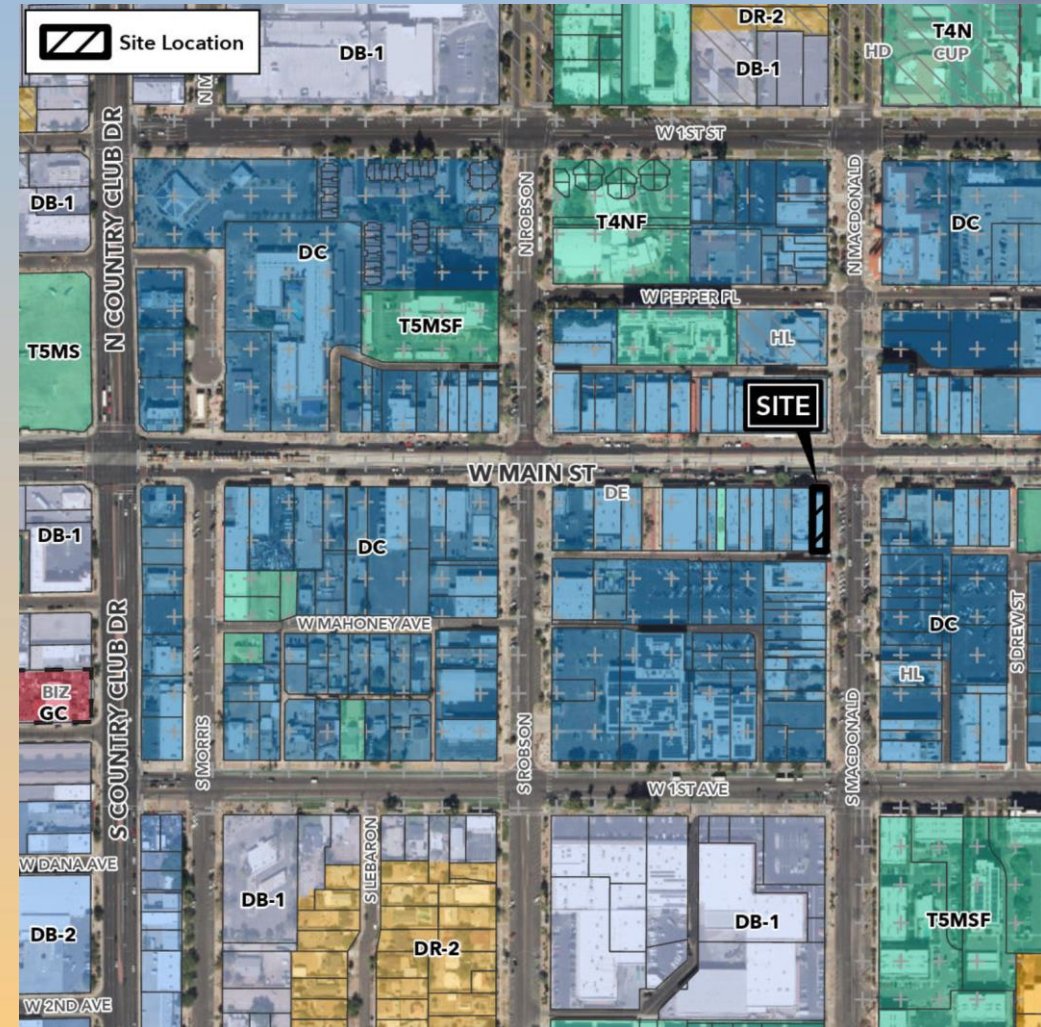
- Design Review
- Downtown façade improvement to existing storefront





Location

- South side of Main Street
- West of Center Street
- East of Country Club Drive





Site Photo



Looking south from Main Street



Site Photo

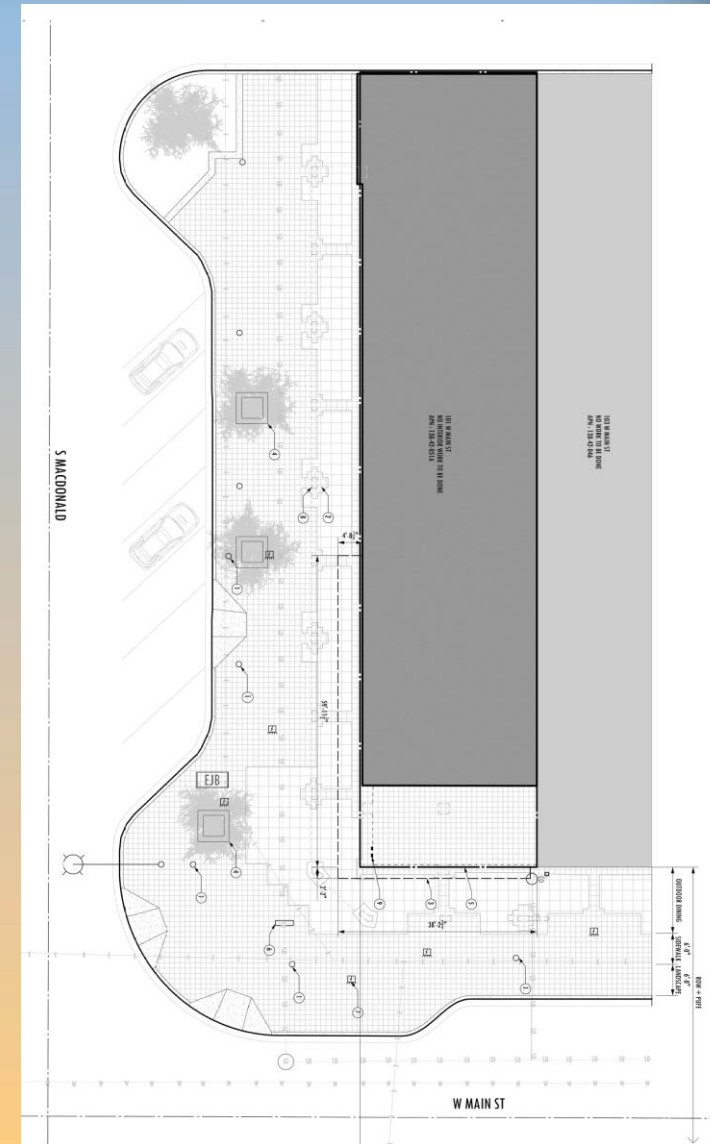


Looking west from MacDonaldd



Site Plan

- No change to building footprint
- Remove existing colonnade and corner tower element
- New parapet corner to match
- New trellis consisting of angle iron





Elevations





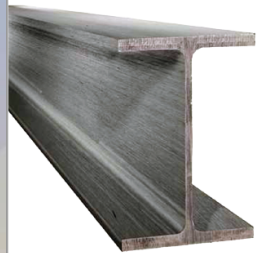
Elevations





Material Board

DESIGN + BUILD



"I" BEAM PROFILE

BLACK OF NIGHT (SW6993)

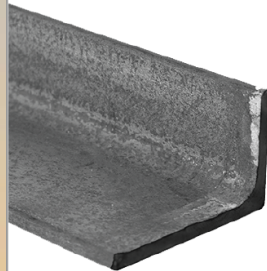
- STEEL TRELLIS
- STEEL DOUBLE COLUMN
- STEEL I BEAM
- STOREFRONT

NETWORK GRAY (SW7073)

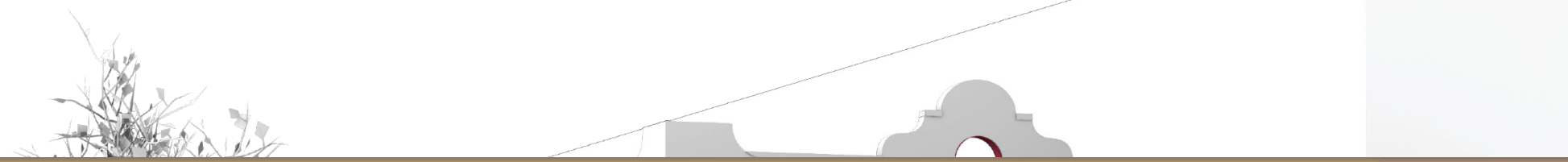
- ALL STUCCO

JUNE BERRY (SW6573)

- ACCENT WALL
- WINDOW AND PARAPET CUT OUT



TRELLIS PROFILE





Findings

Staff is seeking your review and recommendation on the following:

- ✓ Proposed façade improvement

Staff welcomes any feedback



Design Review Board



Historic Photos








Context Photos



Status

-  Future
-  Current
-  Reviewed

