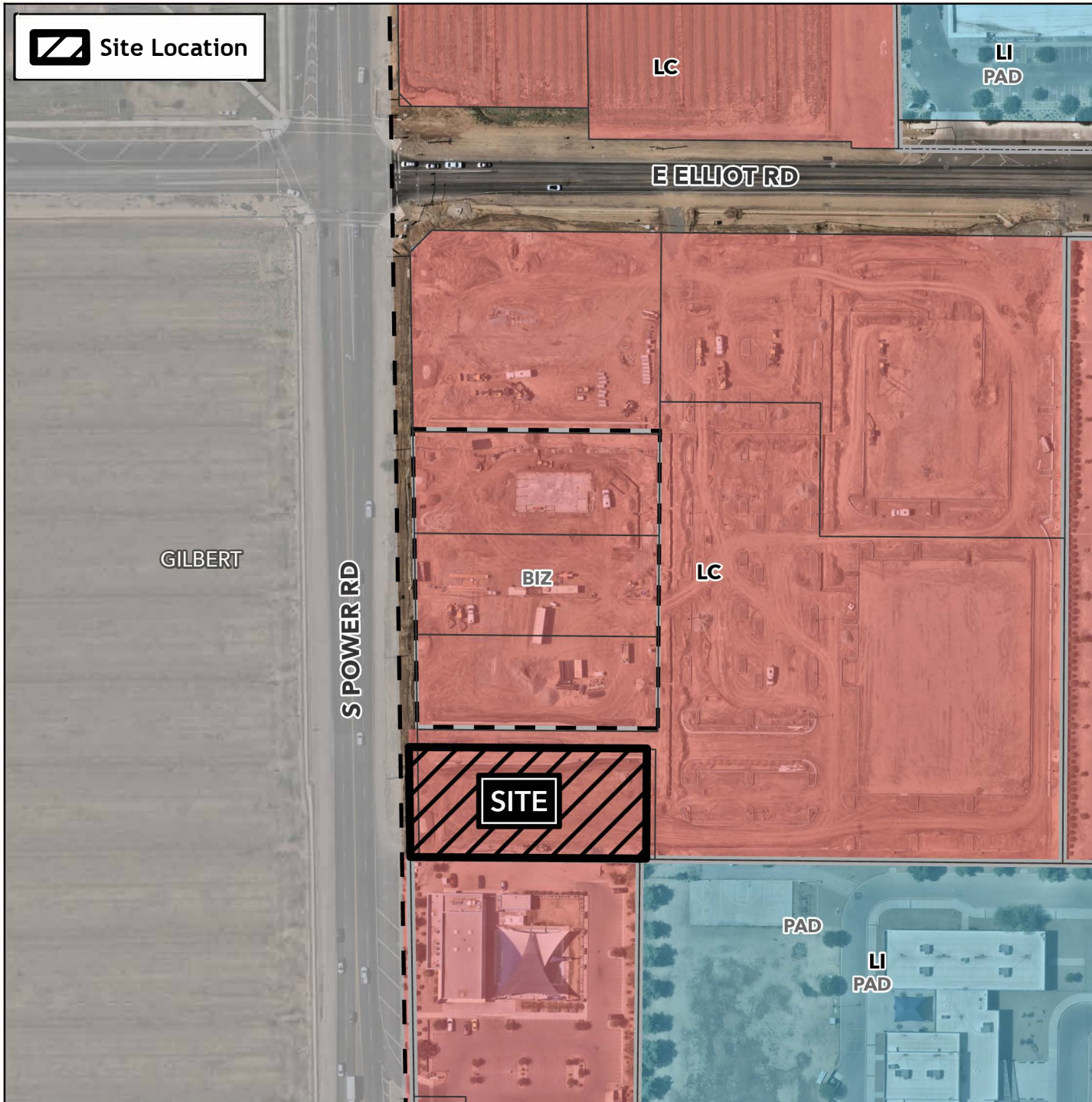


# Planning and Zoning Vicinity Map: ZON25-00309

## Case Details

 Site Location



### Case:

ZON25-00309

### Site / Address:

(District 6). 0.8± acres located approximately 560 feet south of the southeast corner of East Elliot Road and South Power Road.

### Request:

Major Site Plan Modification for a Coffee Shop with Drive-Thru Facilities and amending condition of approval No. 1 of Ordinance No. 5781.

