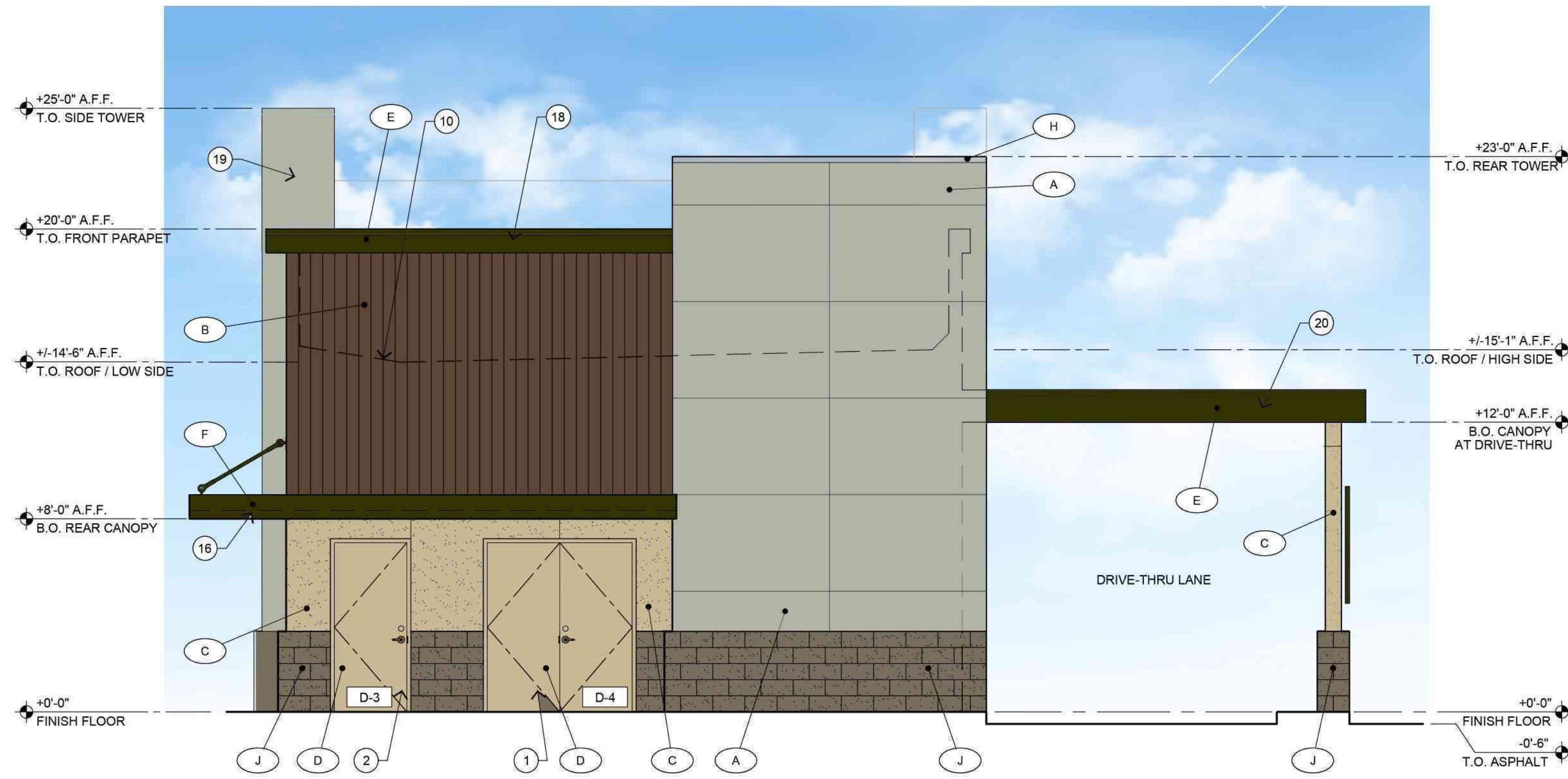


NORTH ELEVATION - 695 SQ. FT.

SYMBOL	MATERIAL	SQ. FT.	PERCENT
A	CONCRETE	291	41.9%
B	VERTICAL WOOD PLANK	160	23.0%
C	STUCCO	113	15.3%
E/F	METAL CANOPIES & FLASHING	58	8.3%
J	SPLIT-FACED CMU WAINSCOT	73	10.5%



3 NORTH ELEVATION - REAR

SCALE: 1/4"=1'-0"

KEYED NOTES
(APPLIES TO SHEETS A6.0 & A6.1)

- S.E.S. CLOSET DOORS TO HAVE SIGNAGE AS REQUIRED BY THE ELECTRIC SERVICE.
- FIRE RISER ROOM DOOR TO HAVE SIGNAGE AS REQUIRED BY THE FIRE DEPARTMENT.
- SPEAKER ORDER STAND W/ CREDIT CARD READER AND WEATHER SHIELD.
- EXTERIOR RATED WALK-IN COOLER PANEL & DOOR WITH BLACK FACTORY FINISH.
- DELIVERY DOOR BELL BUTTON AT +48" A.F.F. AT REAR SERVICE DOOR.
- EXTERIOR WALL MOUNTED AIR CURTAIN, RECESSED INTO METAL CANOPY. REFER TO MECHANICAL DRAWINGS.
- EXTERIOR WALL MOUNTED AIR CURTAIN, RECESSED INTO TOWER WALL ABOVE DRIVE-THRU WINDOW. REFER TO MECHANICAL DRAWINGS.
- DRIVE-THRU WINDOW RECESSED INTO TOWER, SILL TO BE CLAD WITH 16 GA. S/S WITH 2" EDGE TURN DOWN.
- DASHED LINE INDICATES OUTLINE OF ROOFTOP EQUIPMENT.
- LINE OF ROOF DECK, SHOWN DASHED.
- EXTERIOR LIGHTING, REFER TO ELECTRICAL DRAWINGS.
- HOSE BIBB, REFER TO PLUMBING DRAWINGS.
- BOLLARD W/ 2" REFLECTIVE YELLOW TAPE AT TOP EDGE.
- 12" TALL BLACK HELVETICA BUILDING ADDRESS NUMBERS ON CONTRASTING BACKGROUND.
- MENUBOARD, ILLUMINATED FROM FIXTURES ABOVE.
- METAL CANOPY.
- METAL CLAD WATERFALL WALL. COORDINATE WITH METAL CANOPY ABOVE AND FINISH TO MATCH. MAKE WATER TIGHT.
- PARAPET CORNICE ABOVE WOOD PLANK FINISH TO HAVE RECESSED LED STRIP LIGHTING.
- BACKSIDE OF TOWER BEYOND TO BE FINISHED TO MATCH FRONT FACE AND SIDES.
- DRIVE-THRU CANOPY.
- QUARTZ COUNTERTOP TO EXTEND THROUGH WALL OPENING AT ROLL-UP DOOR.
- ROOF DRAIN OUTLETS. ROOF DRAINS TO BE CONCEALED IN EXTERIOR WALL CONSTRUCTION.

SCALE: AS NOTED
DRAWN BY:
DATE: 06.10.2024

PROJECT NUMBER: **23-267**

#	DATE	DESCRIPTION

Angie's PRIME GRILL

STORE NO. **11124**

PROJECT: **ANGIE'S PRIME GRILL**
ALMA SCHOOL & GUADALUPE
1118 WEST GUADALUPE ROAD
MESA, ARIZONA 85021

SHEET TITLE: **EXTERIOR ELEVATIONS**

ideation
DESIGN GROUP

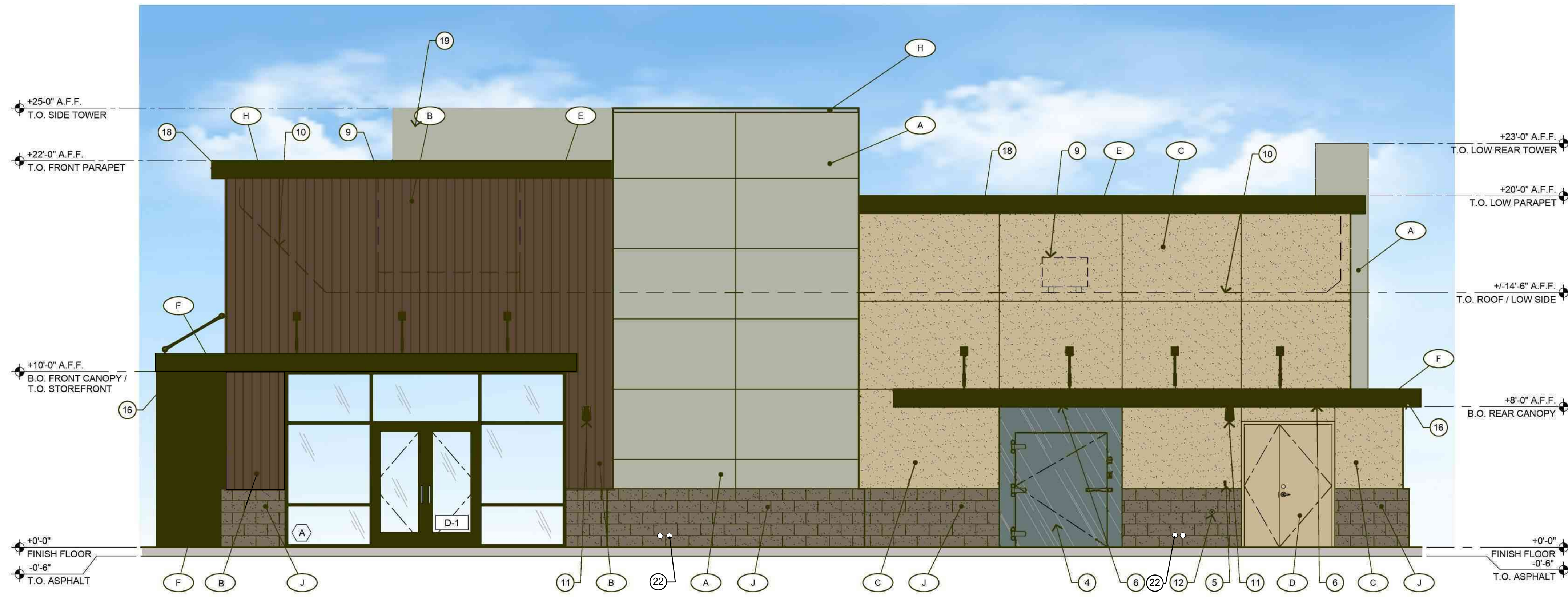
PHOENIX, ARIZONA 85034
4885 EAST WASHINGTON STREET
PHOENIX, ARIZONA 85034
480.792.1781
INTERIOR DESIGN | FOODSERVICE DESIGN | ARCHITECTURE



A6.1

EAST ELEVATION - 1,449.5 SQ. FT.

SYMBOL	MATERIAL	SQ. FT.	PERCENT
A	CONCRETE	322.5	22.2%
B	VERTICAL WOOD PLANK	262.0	18.0%
C	STUCCO	373.5	25.8%
E/F	METAL CANOPIES & FLASHING	144.5	10.0%
J	SPLIT-FACED CMU WAINSCOT	131.0	9.0%
	STOREFRONT & WALK-IN DOOR	216.0	15.0%



4 EAST ELEVATION - ENTRANCE SIDENOR

SCALE: 1/4"=1'-0"

EXTERIOR FINISH SCHEDULE

MARK	MATERIAL (NO ALTERNATIVES ALLOWED)
(A)	CONCRETE LOOK WALL PANELS ON TOWERS KOL PANELS - COLOR: TELEGREY - FINISH: SMOOTH
(B)	VERTICAL WOOD PLANKS (ENGINEERED) NEW TECHWOOD, ULTRASHIELD NATURALE, COMPOSITE SIDING TONGUE & GROOVE US09, 5-9/16" X 1/2". COLOR: PERUVIAN TEAK (TK) USE COMPLETE SYSTEM COMPONENTS AND TRIMS.
(C)	DRYVIT E.I.F.S. STUCCO SYSTEM W/ SANDBLAST TEXTURE SANDBLAST NTX 108ST MANOR WHITE BATCH #7264-QT - PASTEL BASE STRATATONE
(D)	METAL DOORS & FRAMES, PAINT TO MATCH 'C' ABOVE
(E)	ATAS POWDERCOATED METAL PARAPET CORNICE, WALL CAP, DRIVE-THRU CANOPY FASCIA, PAINT LOUVER STRAP TO MATCH. COLOR: CLASSIC BRONZE
(F)	METAL CANOPY W/ PAINT FINISH TO MATCH 'E' ABOVE
(G)	METAL LOUVERS W/ KOROSEAL, REALTEC ARCHITECTURAL FILM. COLOR: TEC-9070 WALNUT SG, CUSTOM SIZE CONTACT: MICHAEL FOCKLER - KOROSEAL #480.753.5474; MFOCKLER@KOROSEAL.COM
(H)	METAL PARAPET CAP AT TOWER. COLOR TO MATCH 'A'
(J)	OLDCASTLE SUPERLITE, SPLIT FACE C.M.U., - 4" X 8" X 16" SERIES: ECHELON - COLOR: OPAL

NOTES:

- E.I.F.S. SYSTEM TO BE DRYVIT OUTSULATION SYSTEM OR EQUAL, INSTALLED PER ICC-ESR 1543.
- MANUFACTURER'S PRODUCT INSTALLATION SPECIFICATIONS SHALL BE MADE AVAILABLE TO FIELD INSPECTOR UPON REQUEST.

DRB SUBMITTAL - 06.17.2024

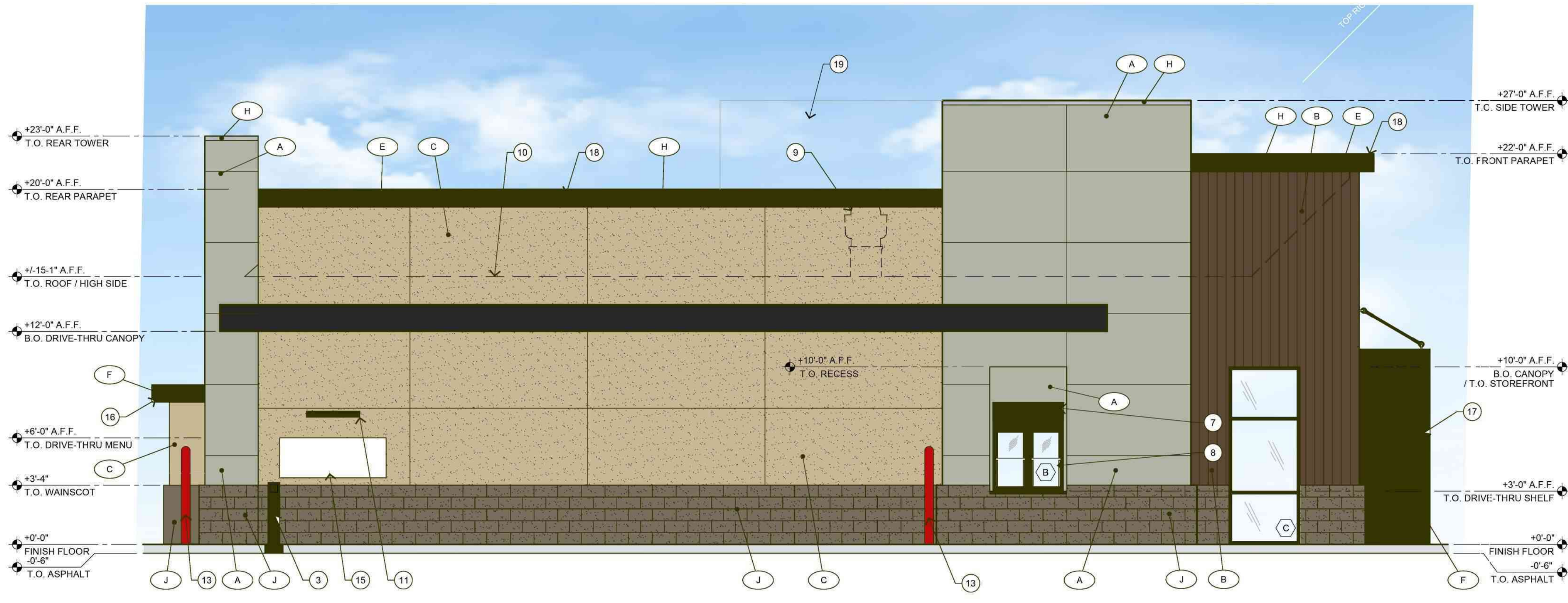
#	DATE	DESCRIPTION

Angie's
PRIME GRILL
 STORE NO. 11124

PROJECT: **ANGIE'S PRIME GRILL**
 ALMA SCHOOL & GUADALUPE
 1118 WEST GUADALUPE ROAD
 MESA, ARIZONA 85021
 SHEET TITLE: EXTERIOR ELEVATIONS

KEYED NOTES
 (APPLIES TO SHEETS A6.0 & A6.1)

- S.E.S. CLOSET DOORS TO HAVE SIGNAGE AS REQUIRED BY THE ELECTRIC SERVICE.
- FIRE RISER ROOM DOOR TO HAVE SIGNAGE AS REQUIRED BY THE FIRE DEPARTMENT.
- SPEAKER ORDER STAND W/ CREDIT CARD READER AND WEATHER SHIELD.
- EXTERIOR RATED WALK-IN COOLER PANEL & DOOR WITH BLACK FACTORY FINISH.
- DELIVERY DOOR BELL BUTTON AT +48" A.F.F. AT REAR SERVICE DOOR.
- EXTERIOR WALL MOUNTED AIR CURTAIN, RECESSED INTO METAL CANOPY. REFER TO MECHANICAL DRAWINGS.
- EXTERIOR WALL MOUNTED AIR CURTAIN, RECESSED INTO TOWER WALL ABOVE DRIVE-THRU WINDOW. REFER TO MECHANICAL DRAWINGS.
- DRIVE-THRU WINDOW RECESSED INTO TOWER, SILL TO BE CLAD WITH 16 GA. S/S WITH 2" EDGE TURN DOWN.
- DASHED LINE INDICATES OUTLINE OF ROOFTOP EQUIPMENT.
- LINE OF ROOF DECK, SHOWN DASHED.
- EXTERIOR LIGHTING, REFER TO ELECTRICAL DRAWINGS.
- HOSE BIBB, REFER TO PLUMBING DRAWINGS.
- BOLLARD W/ 2" REFLECTIVE YELLOW TAPE AT TOP EDGE.
- 12" TALL BLACK HELVETICA BUILDING ADDRESS NUMBERS ON CONTRASTING BACKGROUND.
- MENUBOARD, ILLUMINATED FROM FIXTURES ABOVE.
- METAL CANOPY.
- METAL CLAD WATERFALL WALL. COORDINATE WITH METAL CANOPY ABOVE AND FINISH TO MATCH. MAKE WATER TIGHT.
- PARAPET CORNICE ABOVE WOOD PLANK FINISH TO HAVE RECESSED LED STRIP LIGHTING.
- BACKSIDE OF TOWER BEYOND TO BE FINISHED TO MATCH FRONT FACE AND SIDES.
- DRIVE-THRU CANOPY.
- QUARTZ COUNTERTOP TO EXTEND THROUGH WALL OPENING AT ROLL-UP DOOR.

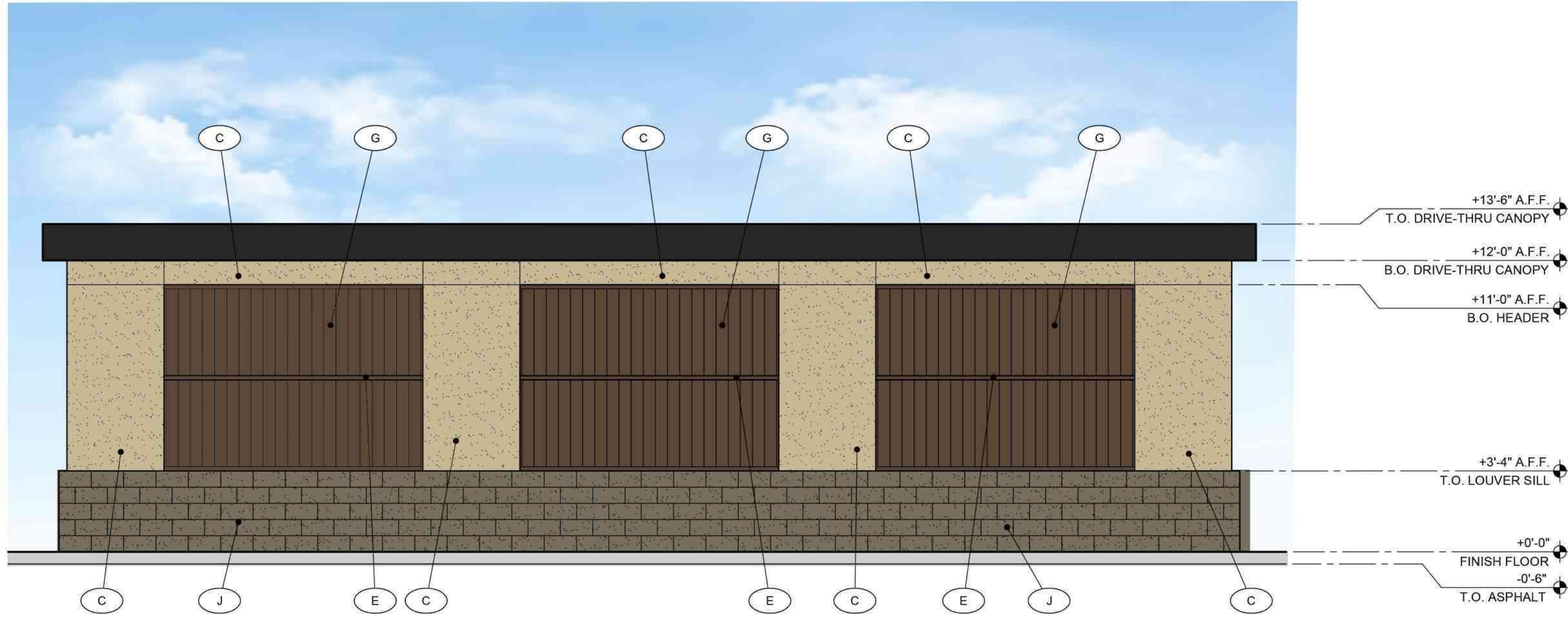


5 WEST ELEVATION - INSIDE DRIVE-THRU BUILDING WALL

SCALE: 1/4"=1'-0"

WEST ELEVATION

SYMBOL	MATERIAL	SQ. FT.	PERCENT
A	CONCRETE	263	18.4%
B	VERTICAL WOOD PLANK	143	10.0%
C	STUCCO or DOORS	391	27.4%
E/F	METAL CANOPIES & FLASHING	169	11.8%
G	LOUVERS	245	17.2%
J	SPLIT-FACED CMU WAINSCOT	212	14.9%



6 WEST ELEVATION - INSIDE DRIVE-THRU OUTER WALL

SCALE: 1/4"=1'-0"

EXTERIOR FINISH SCHEDULE

MARK	MATERIAL (NO ALTERNATIVES ALLOWED)
(A)	CONCRETE LOOK WALL PANELS ON TOWERS KOL PANELS - COLOR: TELEGREY - FINISH: SMOOTH
(B)	VERTICAL WOOD PLANKS (ENGINEERED) NEW TECHWOOD, ULTRASHIELD NATURALE, COMPOSITE SIDING TONGUE & GROOVE US09, 5-9/16" X 1/2", COLOR: PERUVIAN TEAK (TK) USE COMPLETE SYSTEM COMPONENTS AND TRIMS.
(C)	DRYVIT E.I.F.S. STUCCO SYSTEM W/ SANDBLAST TEXTURE SANDBLAST NTX 108ST MANOR WHITE BATCH #7264-QT - PASTEL BASE STRATATONE
(D)	METAL DOORS & FRAMES, PAINT TO MATCH 'C' ABOVE
(E)	ATAS POWDERCOATED METAL PARAPET CORNICE, WALL CAP, DRIVE-THRU CANOPY FASCIA. PAINT LOUVER STRAP TO MATCH. COLOR: CLASSIC BRONZE
(F)	METAL CANOPY W/ PAINT FINISH TO MATCH 'E' ABOVE
(G)	METAL LOUVERS W/ KOROSEAL, REALTEC ARCHITECTURAL FILM. COLOR: TEC-5070 WALNUT SG, CUSTOM SIZE CONTACT: MICHAEL FOCKLER - KOROSEAL #480.753.5474; MFOCKLER@KOROSEAL.COM
(H)	METAL PARAPET CAP AT TOWER. COLOR TO MATCH 'A'
(J)	OLDCASTLE SUPERLITE, SPLIT FACE C.M.U. - 4" X 8" X 16" SERIES: ECHIELON - COLOR: OPAL

NOTES:
 1. E.I.F.S. SYSTEM TO BE DRYVIT OUTSULATION SYSTEM OR EQUAL, INSTALLED PER ICC-ESR 1543.
 2. MANUFACTURER'S PRODUCT INSTALLATION SPECIFICATIONS SHALL BE MADE AVAILABLE TO FIELD INSPECTOR UPON REQUEST.

DRB SUBMITTAL - 06.17.2024

ideation
 DESIGN GROUP

4885 EAST WASHINGTON STREET
 PHOENIX, ARIZONA 85034
 tel 602.792.1781 fax 602.792.1846
 INTERIOR DESIGN | FOODSERVICE DESIGN | ARCHITECTURE



A6.2

Angie's

PRIME

GRILL 

ALMA SCHOOL & GUADALUPE ROAD, MESA
ANGIE'S PRIME GRILL



