

**EXTERIOR ELEVATIONS - MATERIAL LEGEND**

PAINTED TILT-UP CONCRETE	INSULATED METAL WALL PANELS	METAL COMPOSITE MATERIAL PANEL	METAL COPING	FORMED METAL PANEL SCREEN WALL	INSULATED GLASS UNIT CURTAIN WALL SYSTEM AND WINDOWS	EQUIPMENT YARD WALL
<p>1a SILVER POLISH (DE6374)</p> <p>1b WALRUS (DE6368)</p> <p>1c IGLoo (DEW379)</p> <p>1d BOAT ANCHOR (DE6377)</p> <p>1e IGLoo (DEW379) FORMLINER - RECKLI 21241 HAWAII</p>	<p>2a SILVER POLISH (DE6374)</p> <p>2b IGLoo (DEW379)</p> <p>2c BOAT ANCHOR (DE6377)</p>	<p>3a NTT BLUE PANTONE 285C</p> <p>3b NTT BLUE PANTONE 285C VERTICAL FIN / DOWNSPOUT ENCLOSURE</p> <p>3c RICH BLACK CENTRIA - 9916 EYEBROW</p> <p>3d IGLoo (DEW379) EYEBROW</p>	<p>4a WALRUS (DE6368)</p> <p>4b BOAT ANCHOR (DE6377)</p>	<p>5a SILVER POLISH (DE6374)</p> <p>5b BOAT ANCHOR (DE6377)</p> <p>5c IGLoo (DEW379) PRODUCT - ARTISAN PANELS INC., 65 - MATRIX</p> <p>5d SILVER POLISH (DE6374) PRODUCT - ARTISAN PANELS INC., 65 - MATRIX</p>	<p>6 BLUE GLASS UNIT</p> <p>6f RICH BLACK CENTRIA - 9916 MULLION FRAMING</p> <p>6s BLUE SPANDREL GLASS UNIT</p> <p>6m CLEAR ANODIZED MULLION FRAMING</p> <p>6c CLEAR GLASS UNIT</p>	<p>7 MINI CHAIN LINK SECURITY FENCE</p> <p>GALVANIZED POSTS</p>

**FAÇADE MATERIAL CALCULATIONS**

NORTH FAÇADE		TOTAL AREA = 55,380 SF	
1a	1a - PAINTED TILT-UP CONCRETE =	23,631 SF - 42.67%	
1b	1b - PAINTED TILT-UP CONCRETE =	12,031 SF - 21.72%	
1d	1d - PAINTED TILT-UP CONCRETE =	3,005 SF - 5.43%	
2a	2a - INSULATED METAL WALL PANELS =	234 SF - 0.42%	
2c	2c - INSULATED METAL WALL PANELS =	2,463 SF - 4.45%	
3a	3a - METAL COMPOSITE MATERIAL PANEL =	3,070 SF - 5.54%	
3b	3b - METAL COMPOSITE MATERIAL PANEL =	4,572 SF - 8.26%	
3c	3c - METAL COMPOSITE MATERIAL PANEL =	96 SF - 0.17%	
4a	4a - METAL COPING =	400 SF - 0.72%	
4b	4b - METAL COPING =	66 SF - 0.12%	
6/	6/ - INSULATED GLASS UNIT CURTAIN WALL SYSTEM AND WINDOWS =	4,578 SF - 8.27%	
6m	6m - WALL SYSTEM AND WINDOWS =	1,234 SF - 2.23%	

EAST FAÇADE		TOTAL AREA = 15,709 SF	
1a	1a - PAINTED TILT-UP CONCRETE =	4,149 SF - 26.41%	
1b	1b - PAINTED TILT-UP CONCRETE =	1,995 SF - 12.70%	
1c	1c - PAINTED TILT-UP CONCRETE =	2,518 SF - 16.03%	
1d	1d - PAINTED TILT-UP CONCRETE =	1,011 SF - 6.44%	
1e	1e - PAINTED TILT-UP CONCRETE WITH FORMLINER =	1,518 SF - 9.66%	
2a	2a - INSULATED METAL WALL PANELS =	88 SF - 0.56%	
2c	2c - INSULATED METAL WALL PANELS =	1,320 SF - 8.40%	
3a	3a - METAL COMPOSITE MATERIAL PANEL =	794 SF - 4.86%	
3b	3b - METAL COMPOSITE MATERIAL PANEL =	987 SF - 6.28%	
4a	4a - METAL COPING =	329 SF - 2.09%	
4b	4b - METAL COPING =	37 SF - 0.44%	
5d	5d - FORMED METAL PANEL SCREEN WALL =	828 SF - 5.27%	
6s/	6s/ - INSULATED GLASS UNIT CURTAIN WALL SYSTEM AND WINDOWS =	135 SF - 0.86%	

**OPENING CALCULATIONS**

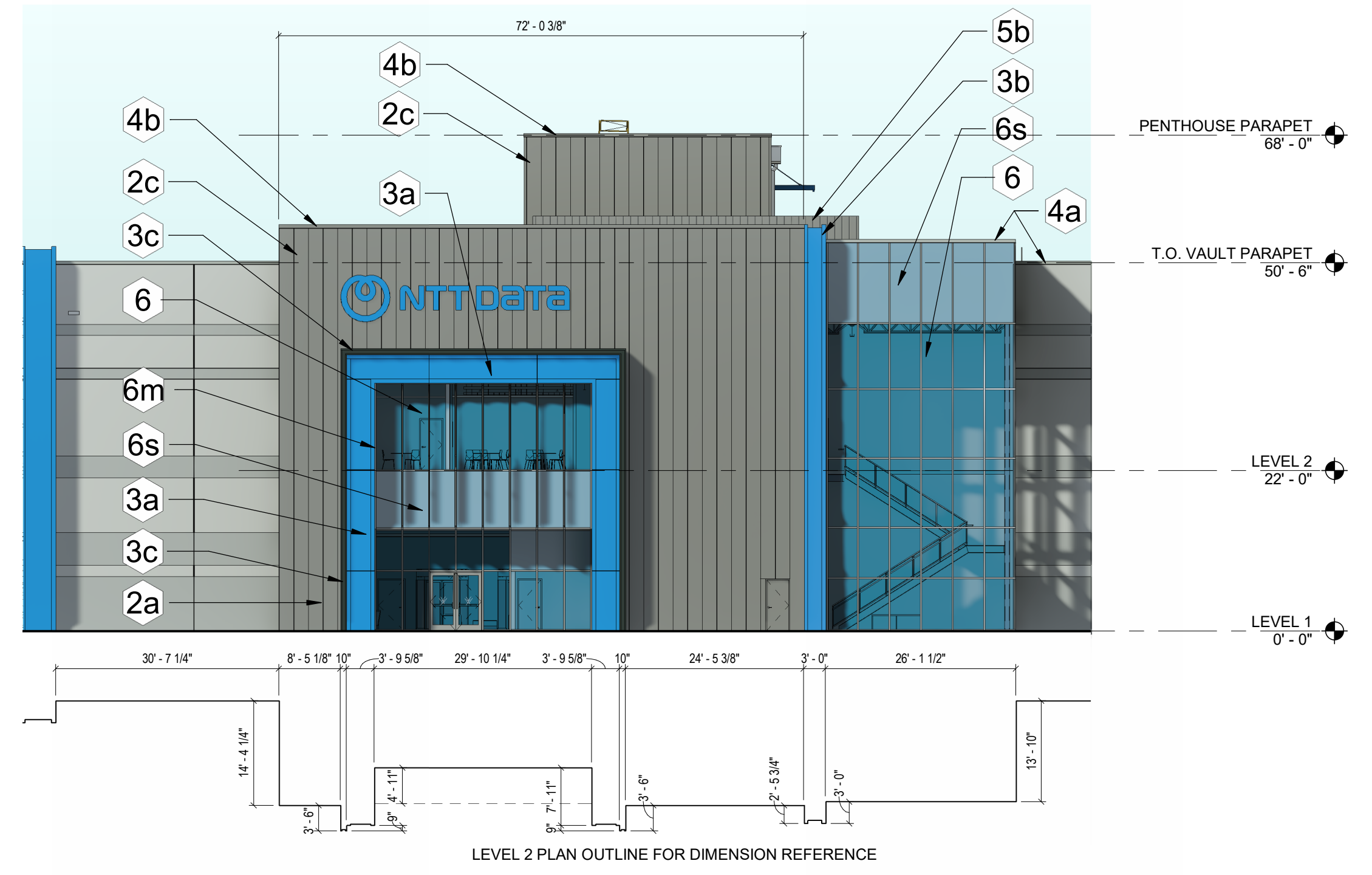
no.	date	by	ckd	description

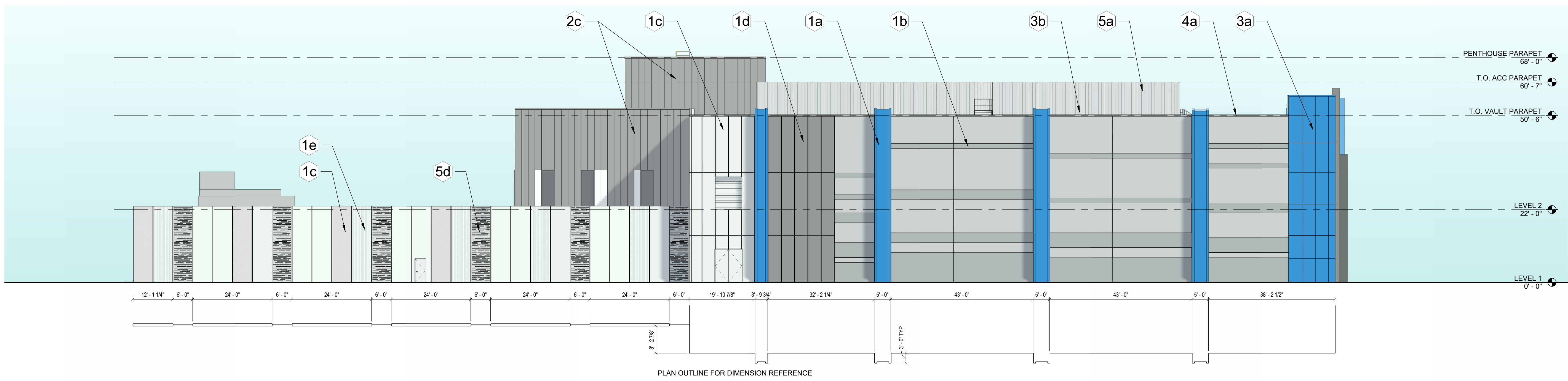
EAST FAÇADE	
TOTAL AREA =	15,709 SF
OPENING AREA =	998 SF
OPENING PERCENTAGE =	6.35%

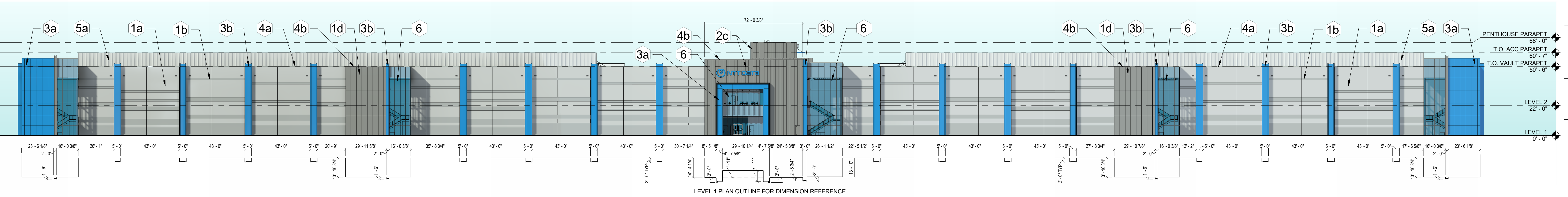
NORTH FAÇADE	
TOTAL AREA =	55,380 SF
OPENING AREA =	5,833 SF
OPENING PERCENTAGE =	10.53%



3 PARTIAL ENLARGED NORTH ELEVATION  
1/16" = 1'-0"



2 EAST ELEVATION  
1/16" = 1'-0"



1 NORTH ELEVATION  
1/32" = 1'-0"

**BURNS & MCDONNELL**  
 9400 WARD PARKWAY  
 KANSAS CITY, MO 64114  
 816-333-9400  
 Burns & McDonnell Engineering Co, Inc.  
 LICENSEE NO. 000165

date	10/09/2025	detailed	BF
designed	JL	checked	AP

**PRELIMINARY - NOT FOR CONSTRUCTION**

PROJECT NAME  
NTT GLOBAL MESA PH 10

EXTERIOR ELEVATIONS  
DC 1

project	187028	contract	
drawing	A00-02A	rev.	
sheet	of	BF	sheets
file			





**EXTERIOR ELEVATIONS - MATERIAL LEGEND**

**PAINTED TILT-UP CONCRETE**

- 1a SILVER POLISH (DE6374)
- 1b WALRUS (DE6368)
- 1c IGLoo (DEW379)
- 1d BOAT ANCHOR (DE6377)
- 1e IGLoo (DEW379) FORMLINER - RECKLI 2/241 HAWAII

**INSULATED METAL WALL PANELS**

- 2a SILVER POLISH (DE6374)
- 2b IGLoo (DEW379)
- 2c BOAT ANCHOR (DE6377)

**METAL COMPOSITE MATERIAL PANEL**

- 3a NTT BLUE PANTONE 285C
- 3b NTT BLUE PANTONE 285C VERTICAL FIN / DOWNSPOUT ENCLOSURE
- 3c RICH BLACK CENTRIA - 9916 EYEBROW
- 3d IGLoo (DEW379) EYEBROW

**METAL COPING**

- 4a WALRUS (DE6368)
- 4b BOAT ANCHOR (DE6377)

**FORMED METAL PANEL SCREEN WALL**

- 5a SILVER POLISH (DE6374)
- 5b BOAT ANCHOR (DE6377)
- 5c IGLoo (DEW379) PRODUCT - ARTISAN PANELS INC., 65 - MATRIX
- 5d SILVER POLISH (DE6374) PRODUCT - ARTISAN PANELS INC., 65 - MATRIX

**INSULATED GLASS UNIT CURTAIN WALL SYSTEM AND WINDOWS**

- 6 BLUE GLASS UNIT
- 6s BLUE SPANDREL GLASS UNIT
- 6c CLEAR GLASS UNIT
- 6f RICH BLACK CENTRIA - 9916 MULLION FRAMING
- 6m CLEAR ANODIZED MULLION FRAMING

**EQUIPMENT YARD WALL**

- 7 MINI CHAIN LINK SECURITY FENCE
- GALVANIZED POSTS

**FACADE MATERIAL CALCULATIONS**

**NORTH FACADE**

TOTAL AREA = 41,725 SF

1a - PAINTED TILT-UP CONCRETE	=	18,960 SF - 45.44%
1b - PAINTED TILT-UP CONCRETE	=	9,553 SF - 22.90%
1c - PAINTED TILT-UP CONCRETE	=	8,274 SF - 19.83%
1d - PAINTED TILT-UP CONCRETE	=	1,205 SF - 2.89%
2b - INSULATED METAL WALL PANELS	=	191 SF - 0.46%
2c - INSULATED METAL WALL PANELS	=	2,754 SF - 6.60%
3a - METAL COMPOSITE MATERIAL PANEL	=	37 SF - 0.09%
3d - METAL COMPOSITE MATERIAL PANEL	=	75 SF - 0.18%
4a - METAL COPING	=	375 SF - 0.90%
4b - METAL COPING	=	43 SF - 0.10%
6c/ - INSULATED GLASS UNIT CURTAIN WALL SYSTEM AND WINDOWS	=	258 SF - 0.62%

**EAST FACADE**

TOTAL AREA : 13,788 SF

1a - PAINTED TILT-UP CONCRETE	=	4,099 SF - 29.73%
1b - PAINTED TILT-UP CONCRETE	=	2,042 SF - 14.81%
1c - PAINTED TILT-UP CONCRETE	=	3,216 SF - 23.32%
1e - PAINTED TILT-UP CONCRETE WITH FORMLINER	=	1,518 SF - 11.00%
3b - METAL COMPOSITE MATERIAL PANEL	=	987 SF - 7.16%
4a - METAL COPING	=	88 SF - 0.64%
5d - FORMED METAL PANEL SCREEN WALL	=	828 SF - 6.01%

**OPENING CALCULATIONS**

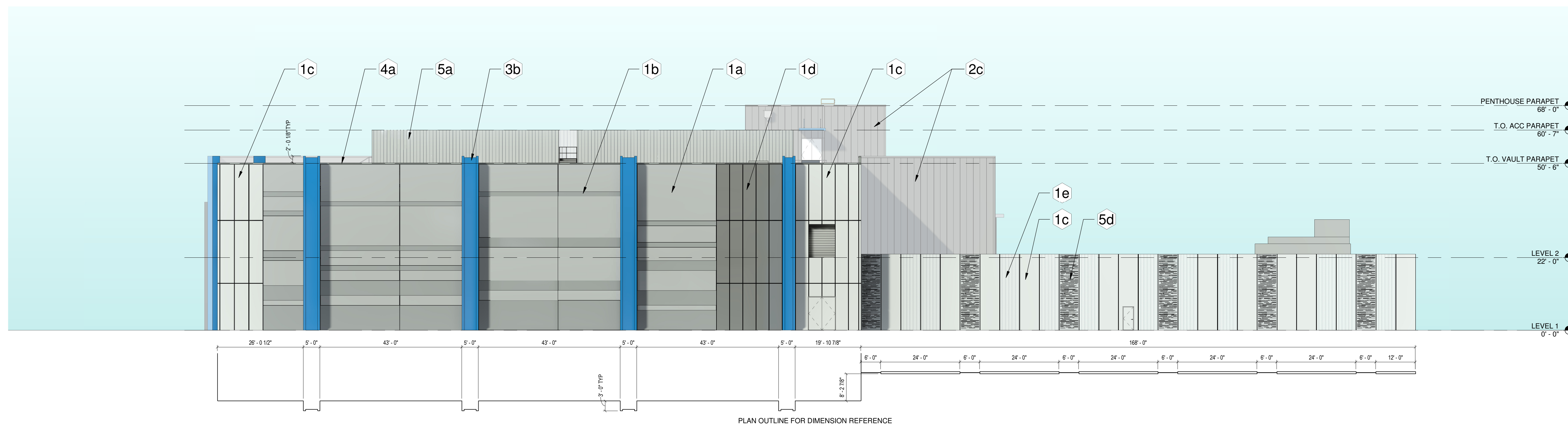
**EAST FACADE**

TOTAL AREA	=	13,788 SF
OPENING AREA	=	165 SF
OPENING PERCENTAGE	=	1.20%

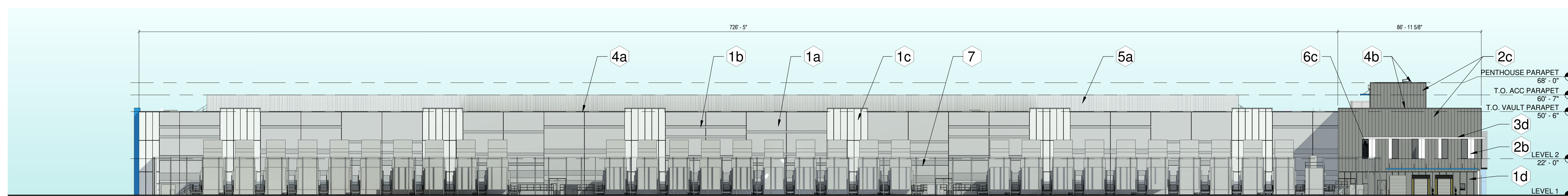
**NORTH FACADE**

TOTAL AREA	=	41,725 SF
OPENING AREA	=	785 SF
OPENING PERCENTAGE	=	1.88%

no.	date	by	ckd	description



2 EAST ELEVATION  
1/16" = 1'-0"



1 NORTH ELEVATION  
1/32" = 1'-0"

**BURNS & MCDONNELL**  
9400 WARD PARKWAY  
KANSAS CITY, MO 64114  
816-333-9400  
Burns & McDonnell Engineering Co, Inc.  
LICENSEE NO. 000165

date	11/21/2025	detailed	BF
designed	JL	checked	AP

**PRELIMINARY - NOT FOR CONSTRUCTION**

**PROJECT NAME**  
NTT GLOBAL MESA PH 10

**EXTERIOR ELEVATIONS**  
DC 2, 3, 4, 5, 6, 7

project 187028 contract

drawing A00-01B rev.

sheet of BF sheets

file