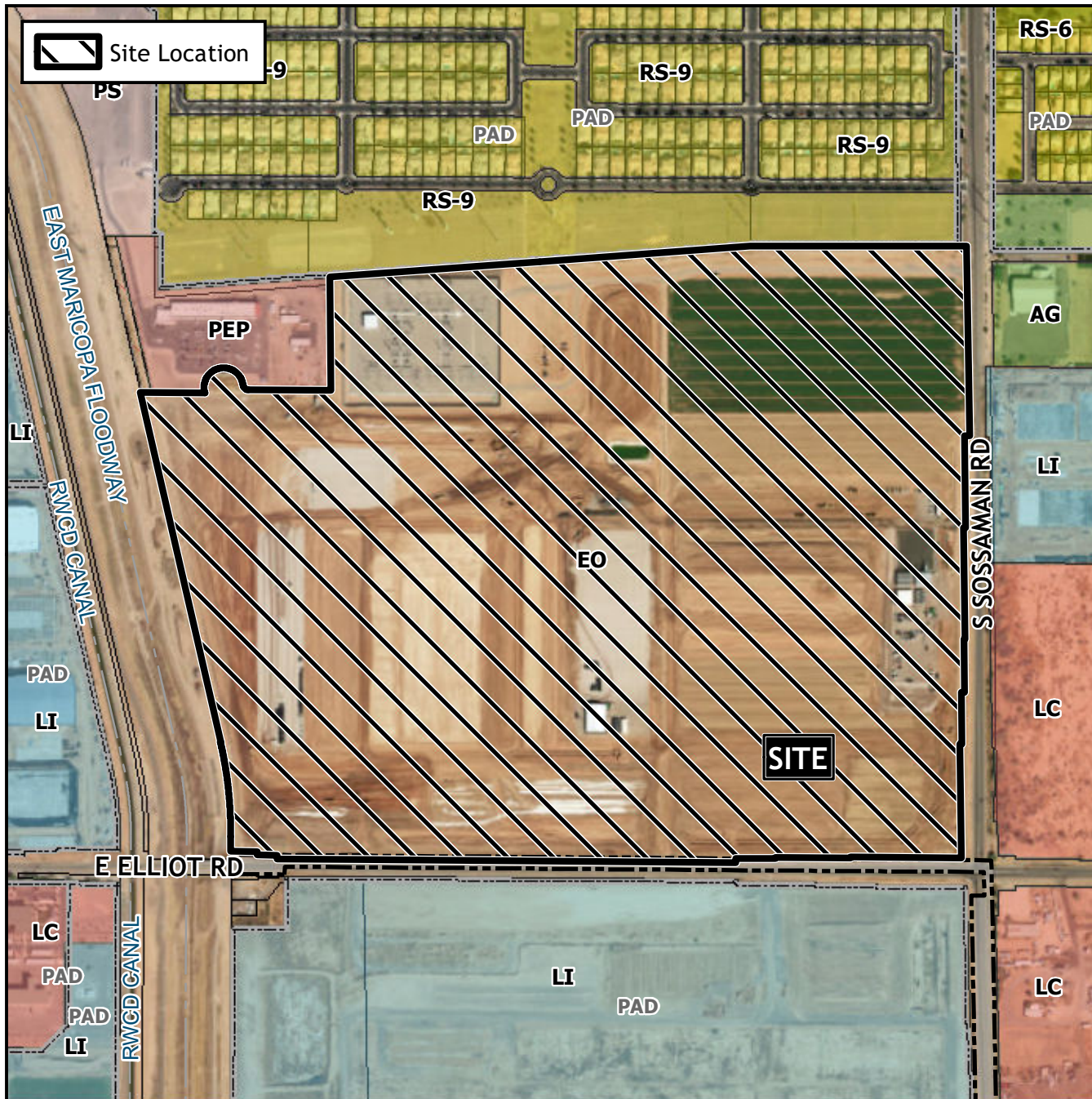


Design Review Vicinity Map: DRB24-00194

Case Details



Case:
DRB24-00194

Site / Address:
(District 6). Within the 7100 to 7600 blocks of East Elliot Road (north side) and within the 3100 to 3500 blocks of South Sossaman Road (west side). Located west of Sossaman Road on the north side of Elliot Road. (187± acres).

Request:
Design Review for an office development.

