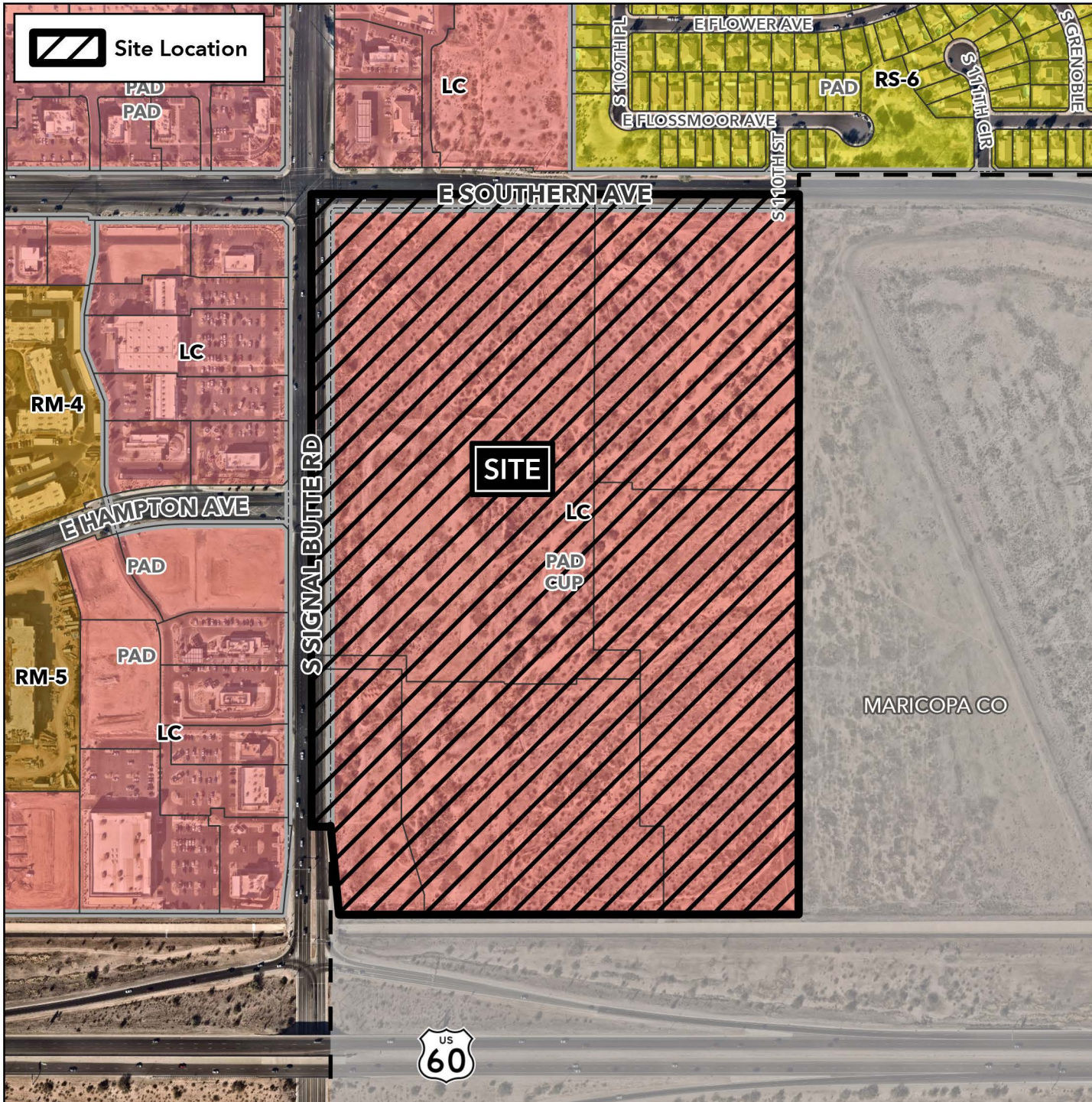


Planning and Zoning Vicinity Map: ZON25-00208

Case Details



Site Location



Case:

ZON25-00208

Site / Address:

(District 5). 61± acres located at the southeast corner of East Southern Avenue and South Signal Butte Road.

Request:

Major Site Plan Modification and amending Condition of Approval No. 1 for case ZON23-00691 to allow for a mixed-use development.

