

DESIGN T-480-894-1680 F-480-894-2529
PROFESSIONALS, L.L.C.
 4542 E. McKELLIPS RD., STE. 101, MESA, AZ 85215

ENTERPRISE NETWORKS SOLUTIONS
 FOR: LARRY POTTHOFF
 3633 NORTH 55TH PLACE MESA, AZ 85215

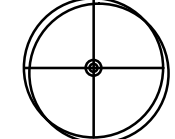


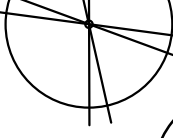




SHEET LI
 LANDSCAPE PLAN
 DATE 8-26-24 DWN. BY j_m

PROJECT NO
 1707

LANDSCAPE CALCULATIONS

ON-SITE LANDSCAPING AREA: 61,208 S.F. (10.5% ON SITE)
 OFF-SITE LANDSCAPING AREA: 8,918 S.F.
 TOTAL LANDSCAPE AREA: 70,126 S.F.

PLANT PALETTE

-  TEXAS EBONY EBENOPSIS EBANO 2 - 24" BOX, LOW BREAKER
-  DESERT MUSEUM PALO PARKINSONIA FLORIDA 4 - 24" BOX, STANDARD
-  PALO BREA PARKINSONIA PREACOX 6 - 24" BOX, STANDARD
-  RED PUSH PISTACHE PISTACIA X 'RED PUSH' 6 - 24" BOX, STANDARD
-  THORNLESS CASCALOTE CAESALPINIA CACALAGO (SMOOTHIE) 2 - 24" BOX, STANDARD
-  SWEET KATIE DESERT WILLOW CHILOPSIS LINEARIS 17 - 15 GAL, MULTI TRUNK
-  SAGUARO CARNEGIEA GIGANTEA 12 - VARY HEIGHTS AND ARMS 60% 8' TO 20' 3@4'-8' NO ARM, 3@8' TO 12' DBL. ARM & 6@8'-20' W/ VARY HEIGHTS AND ARMS OWNER TO SELECT AND FIELD VERIFY LOCATION.
-  OCOTILLO FEUQUIERIA SPLENDENS 15 - 15 GAL, 14 - 24" BOX

PLANT PALETTE

-  8 - BAJA FAIRY DUSTER CALLIANDRA CALIFORNICA
-  25 - BAJA RUELLA, RUELLIA PENINSULARIS
-  21 - RED HESPERALOE HESPERALOE PARVILORA
-  42 - RED BIRD OF PARADISE CAESALPINIA PULCHERRIMA
-  21 - MEXICAN HONEYSUCKLE CHUPAROSA
-  31 - BRITTLE BUSH ENCELIA FARINOSA
-  63 - REGAL MIST MUHLENBERGIA CAPILLARIS
-  16 - CORAL FOUNTAIN RUSSELLIA EQUISETIFORMIS
-  33 - SPARKY TECOMA TECOMA X "SPARKY"
-  29 - PRICKLY PEAR OPUNTIA
-  40 - AGAVE AGAVE FILIFERA
-  28 - YUCCA YUCCA GLORIOSA VARIEGATA
-  15 - BARREL CACTUS FEROCACTUS WISIEZENI
-  30 - BARREL CACTUS ECHINOACTUS GRUSONII
-  7 - BAUER VINE PANDOREA JASMINOIDES

-  NEW GOLD LANTANA LANTANA "NEW GOLD"
-  LANTANA MONTEVIDENSIS LANTANA "TRAILING PURPLE"

ALL LANDSCAPE & PLANTER AREAS SHALL BE COVERED WITH 2" MIN. 1/4" SCREENED MADISON GOLD DECOMPOSED GRANITE.
 SHRUBS SHALL BE 5 GAL. SIZE EACH. LOCATIONS TO BE PER APPROVED PLANS
 ALL GROUND COVER SHALL BE 1 GAL. CONTAINERS AT 3'-0" O.C. TYP.

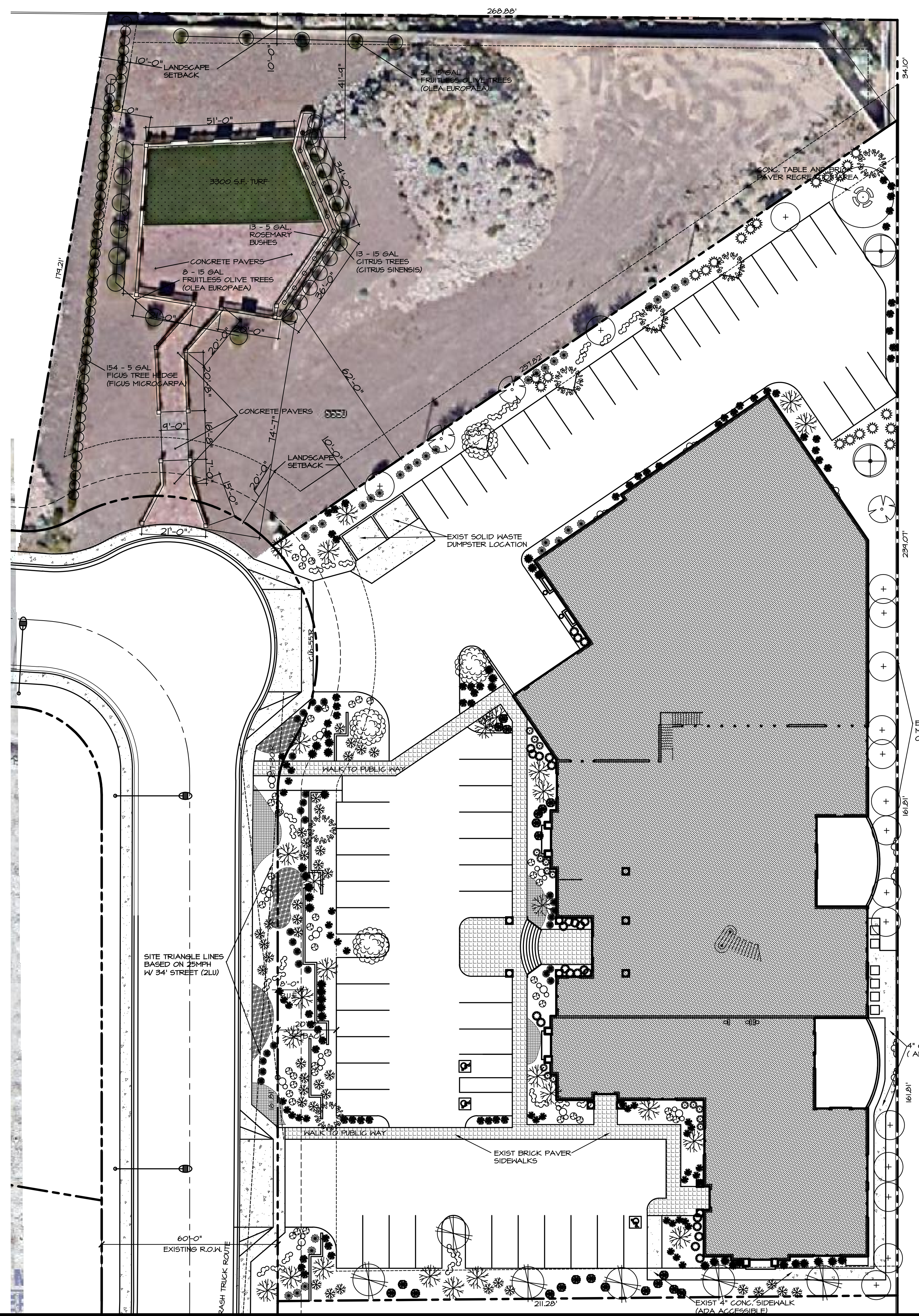
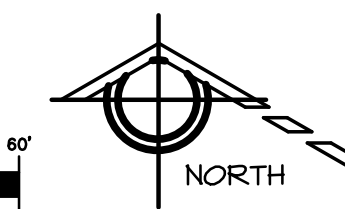
LANDSCAPE PLAN

SCALE: 1" = 20'-0"

GRAPHIC SCALE



(IN FEET)
1 inch = 20' ft.



PRE SUBMITTAL # PS17-031 (PLN2017-00264)
 P & Z CASE NUMBER #217-042