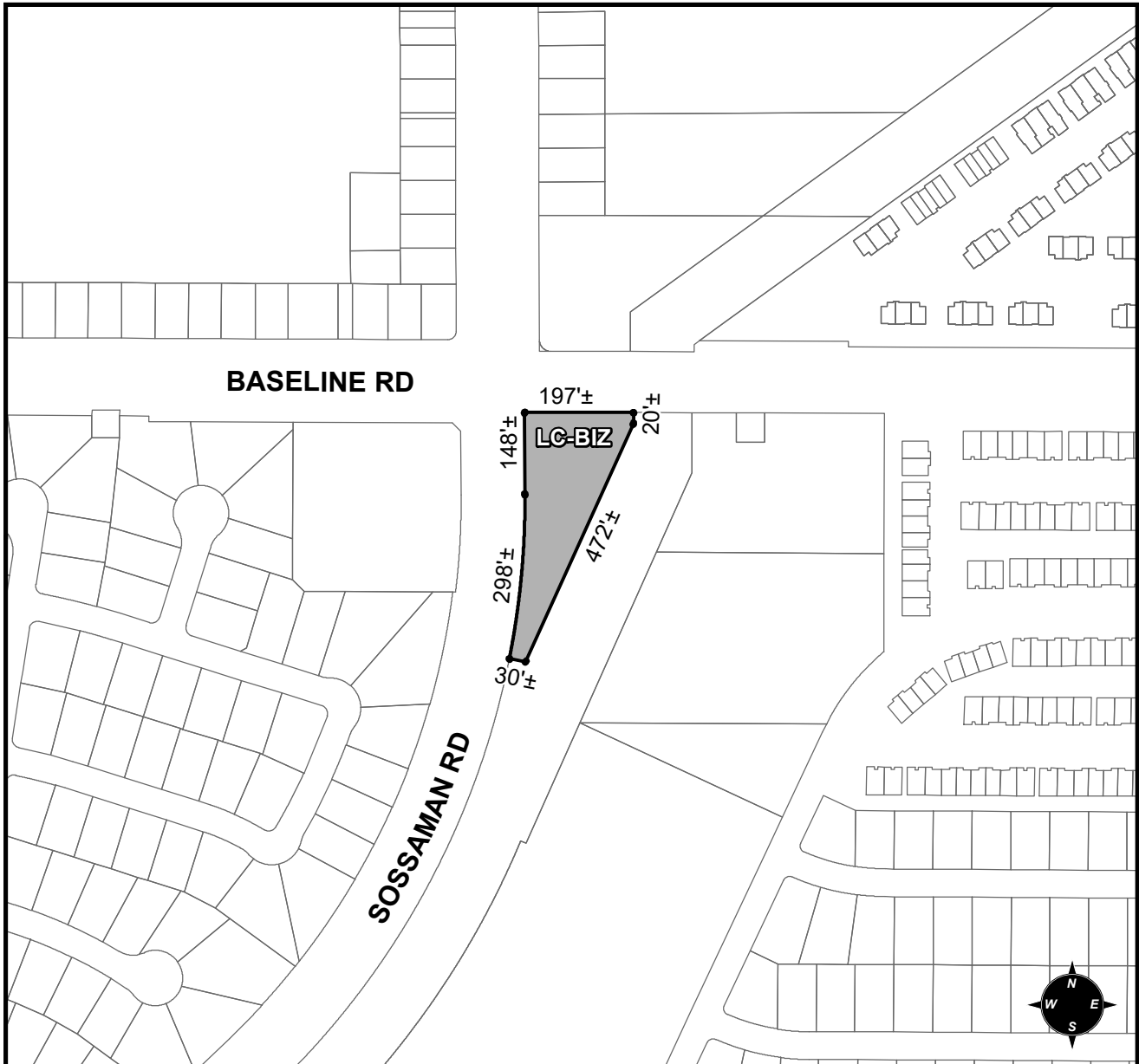




**OFFICIAL SUPPLEMENTARY ZONING MAP
AMENDING THE CITY OF MESA ZONING MAP**



CASE: ZON18-00061
ACREAGE: 1.1±
REQUEST: REZONE FROM LC TO LC-BIZ

ORDINANCE: _____

Please be advised that the attached zoning changes were approved by the Mesa City Council on _____, 2018 by Ordinance # _____. If you have any questions concerning these changes, contact the City of Mesa Planning Division at 480-644-2385.

_____ **ATTEST:** _____ **DATE:** _____
MAYOR **CITY CLERK**