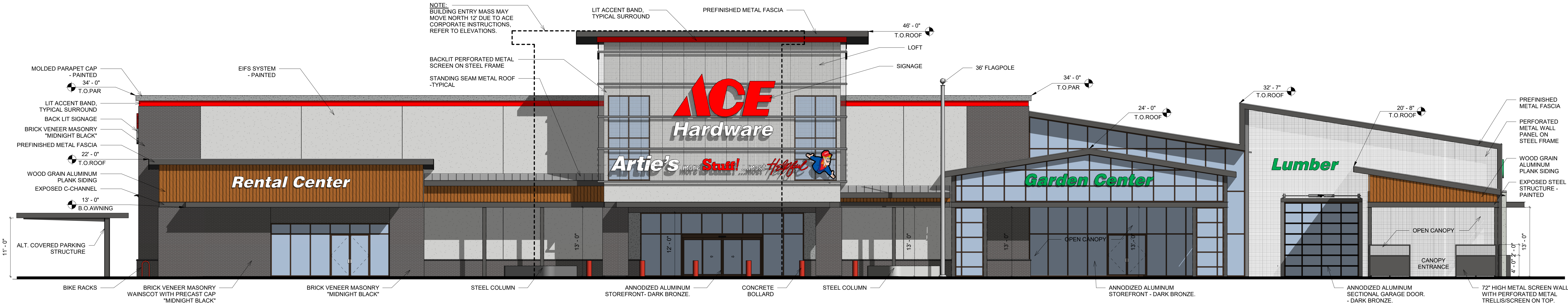


2 ACE HARDWARE - SOUTH (SIDE) ELEVATION
 A201 1/8" = 1'-0"



1 ACE HARDWARE - WEST (FRONT) ELEVATION
 A201 1/8" = 1'-0"

MATERIAL CALCULATIONS

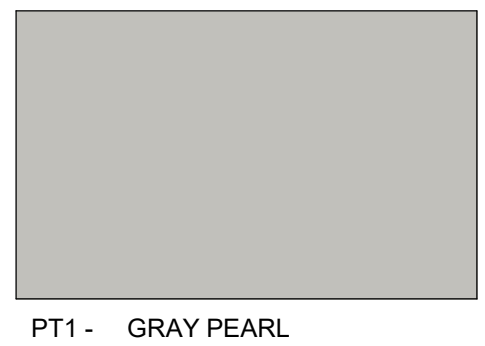
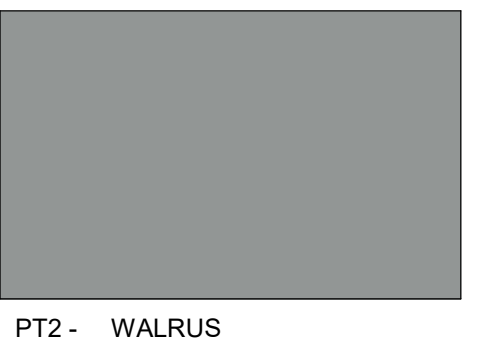

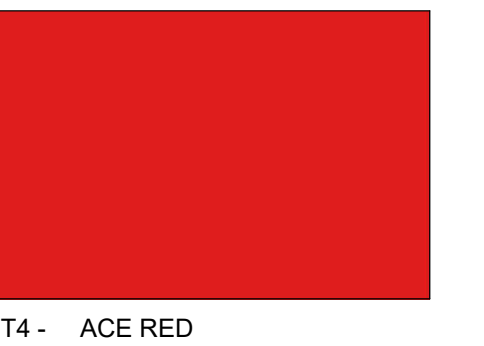
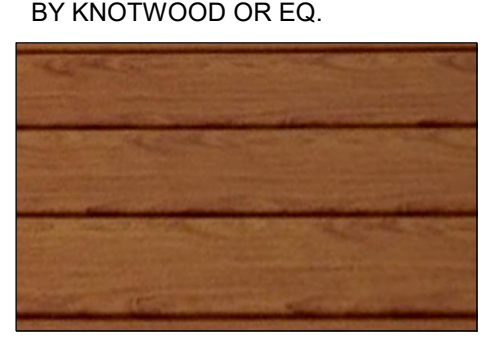


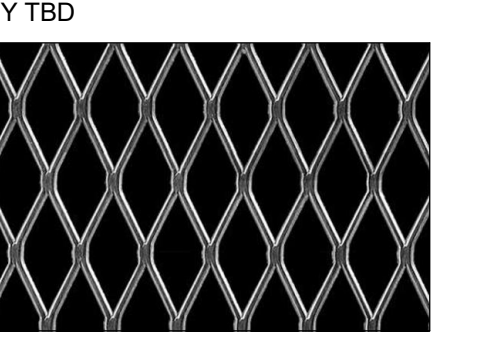
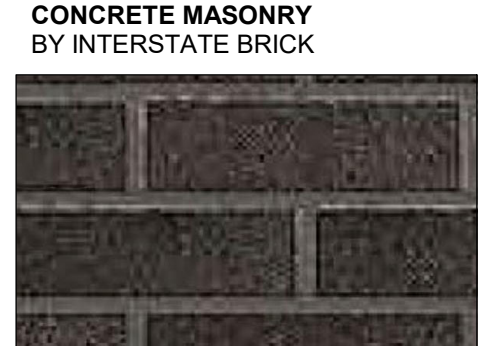
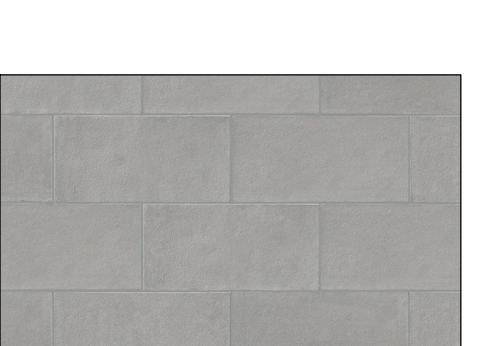


SOUTH ELEVATION

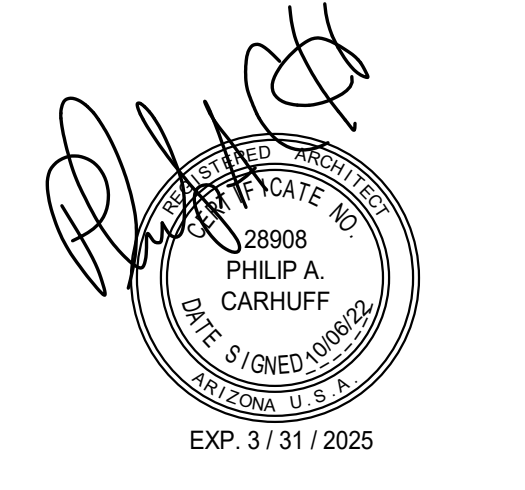
- BRICK VENEER MASONRY - 770.11 SF (11.71%)
- EXPOSED CMU - 963.50 SF (14.65%)
- STANDING SEAM - 2,571.97 SF (39.10%)
- EIFS PAINTED - 985.31 SF (14.99%)
- WOOD GRAIN ALUMINUM PLANK SIDING - 35.32 SF (0.54%)
- PERFORATED METAL SCREEN - 400.14 SF (6.08%)
- ANODIZED ALUMINUM STOREFRONT - 507.41 SF (7.72%)
- PREFINISHED METAL FASCIA/AWNING - 106.78 SF (1.62%)
- METAL PLANTER - 153.39 SF (2.33%)
- METAL DOOR - 82.99 SF (1.26%)
- TOTAL AREA - 6,676.92 SF (100%)**

WEST ELEVATION

- BRICK VENEER MASONRY - 1,199.99 SF (13.76%)
- EIFS PAINTED - 2,212.18 SF (25.37%)
- WOOD GRAIN ALUMINUM PLANK SIDING - 543.02 SF (6.23%)
- PERFORATED METAL SCREEN - 2,184.41 SF (25.05%)
- ANODIZED ALUMINUM STOREFRONT/SECTIONAL GARAGE DOOR - 2,052.99 SF (23.54%)
- PREFINISHED METAL FASCIA/AWNING - 527.94 SF (6.05%)
- TOTAL AREA - 8,720.49 SF (100%)**

EXTERIOR FINISHES

<p>PAINT BY DUNN EDWARDS</p>  <p>PT1 - GRAY PEARL DEC795</p>  <p>PT2 - WALRUS DE6368</p>  <p>PT3 - JET DE6378</p>  <p>PT4 - ACE RED</p>	<p>WOOD PLANK SIDING BY KNOTWOOD OR EQ.</p>  <p>WD1 - YELLOW CEDAR OR EQ. ALUMINUM PLANK</p> <p>METAL WALL/ROOF PANEL BY TBD</p>  <p>MT3 - SILVER</p> <p>ALUMINUM STOREFRONT BY ARCADIA</p>  <p>MT4 - DARK BRONZE</p> <p>PERFORATED METAL WALL PANEL BY TBD</p>  <p>PM1 - STAINLESS STEEL</p>
<p>CONCRETE MASONRY BY INTERSTATE BRICK</p>  <p>MU1 - MIDNIGHT BLACK INTERSTATE BRICK</p>  <p>MU2 - STANDARD BLOCK INTERSTATE BRICK</p> <p>GLAZING BY TBD</p>  <p>GL1 - SOLARBAN 70</p> <p>SPANDREL GLASS BY TBD</p>  <p>SG1 - SOLARBAN 70</p>	<p>PT1 FIELD PAINT - EIFS MFR: DUNN EDWARDS COLOR: DEC795 GRAY PEARL COLOR FINISH: MATTE/FLAT MATERIAL FINISH: SAND NOTES: APPLY SEMI-GLOSS FINISH TO METALS.</p> <p>PT2 FIELD & ACCENT PAINT MFR: DUNN EDWARDS COLOR: DE6368 WALRUS COLOR FINISH: FLAT/MATTE MATERIAL FINISH: SAND NOTES: APPLY SEMI-GLOSS FINISH TO METALS.</p> <p>PT3 ACCENT PAINT - STEEL MFR: DUNN EDWARDS COLOR: DE6378 JET COLOR FINISH: SEMI-GLOSS NOTES: APPLY SEMI-GLOSS FINISH TO METALS.</p> <p>PT4 ACCENT PAINT - MOLDED TRIM MFR: DUNN EDWARDS COLOR: ACE RED COLOR FINISH: SATIN MATERIAL FINISH: SMOOTH/SAND NOTES: APPLY SEMI-GLOSS FINISH TO METALS.</p> <p>WD1 WOOD PLANK SIDING (ALUMINUM) MFR: KNOTWOOD OR EQ. COLOR: YELLOW CEDAR OR EQ. MODEL: KEC-150 (6" CLADDING)</p> <p>MT3 METAL ROOF/WALL PANEL MFR: AEP SPAN TYPE: SPAN-LOK, 24ga COLOR: SILVERSMITH OR EQ.</p> <p>MT4 ALUMINUM STOREFRONT MFR: ARCADIA COLOR: STANDARD DARK BRONZE</p> <p>MU1 BRICK VENEER ALL HORIZONTAL JOINTS RAKED MFR: INTERSTATE BRICK COLOR: MIDNIGHT BLACK</p> <p>MU2 STANDARD MASONRY BLOCK BLOCK FILLED PRIMER AND PAINTED ALL HORIZONTAL JOINTS RAKED MFR: INTERSTATE BRICK COLOR: DE6368 WALRUS</p>



carhuff+cueva
 architects, llc
 2930 n swan rd #210
 tucson, arizona 85712
 phone 520.577.4560
 www.cca-az.com

ACE HARDWARE + SHOPS

CADENCE CENTER PHASE 2

RAY ROAD & ELLSWORTH ROAD

SCHEMATIC DESIGN

REVISION	DATE	DESCRIPTION	BY

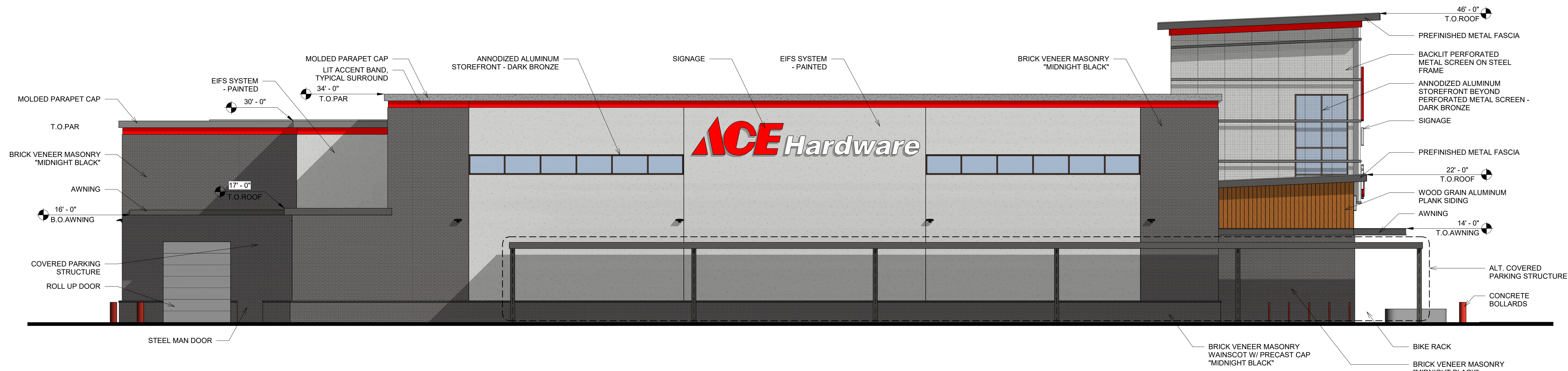
PROJECT NO: **22-1000**

DATE: **10.06.2022**

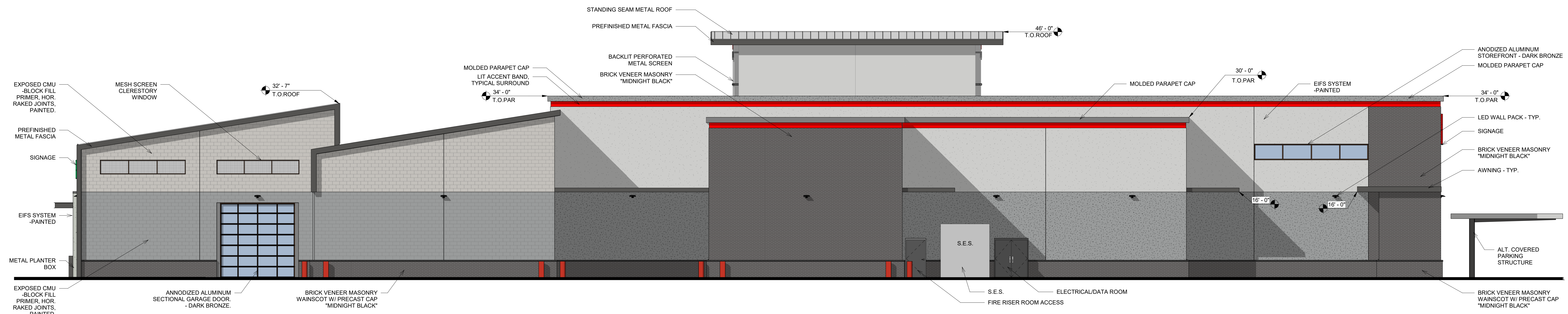
SCALE: **As indicated** DRAWN BY: **AK**

DRAWING TITLE: **SCHEMATIC ELEVATIONS ACE HARDWARE**

DRAWING NUMBER: **A201**



1 **ACE HARDWARE - NORTH (SIDE) ELEVATION**
 A202 1/8" = 1'-0"



2 **ACE HARDWARE - EAST (REAR) ELEVATION**
 A202 1/8" = 1'-0"

MATERIAL CALCULATIONS

NORTH ELEVATION

BRICK VENEER MASONRY - 2,153.12 SF (34.52%)
 EIFS PAINTED - 2,998.33 SF (48.07%)
 WOOD GRAIN ALUMINUM PLANK SIDING - 130.72 SF (2.10%)
 PERFORATED METAL SCREEN - 527.58 SF (8.46%)
 ANODIZED ALUMINUM STOREFRONT - 192.00 SF (3.08%)
 PREFINISHED METAL FASCIA/AWNING - 115.91 SF (1.86%)
 METAL DOOR - 119.53 SF (1.91%)
TOTAL AREA - 6,237.19 SF (100%)

EAST ELEVATION

BRICK VENEER MASONRY - 2,016.59 SF (24.61%)
 EIFS PAINTED - 3,682.51 SF (44.94%)
 EXPOSED CMU - 1,879.41 SF (22.93%)
 MESH SCREEN - 83.71 (1.02%)
 ANODIZED ALUMINUM STOREFRONT/SECTIONAL GARAGE DOOR - 276.99 SF (3.40%)
 PREFINISHED METAL FASCIA/AWNING - 179.44 SF (2.19%)
 METAL DOOR - 74.56 SF (0.91%)
TOTAL AREA - 8,195.2 SF (100%)

EXTERIOR FINISHES

PAINT BY DUNN EDWARDS

PT1 - GRAY PEARL DEC795	PT2 - WALRUS DE6368	PT3 - JET DE6378	PT4 - ACE RED
----------------------------	------------------------	---------------------	---------------

WOOD PLANK SIDING BY KNOTWOOD OR EQ.

WD1 - YELLOW CEDAR OR EQ. ALUMINUM PLANK

METAL WALL/ROOF PANEL BY TBD

MT3 - SILVER

ALUMINUM STOREFRONT BY ARCADIA

MT4 - DARK BRONZE

PERFORATED METAL WALL PANEL BY TBD

PM1 - STAINLESS STEEL

CONCRETE MASONRY BY INTERSTATE BRICK

MU1 - MIDNIGHT BLACK INTERSTATE BRICK

MU2 - STANDARD BLOCK INTERSTATE BRICK

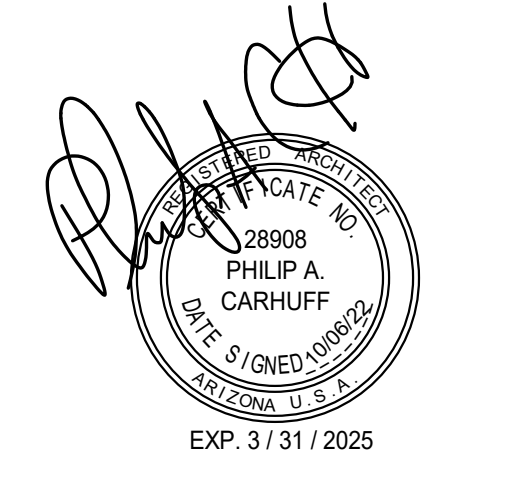
GLAZING BY TBD

GL1 - SOLARBAN 70

SPANDREL GLASS BY TBD

SG1 - SOLARBAN 70

- PT1 FIELD PAINT - EIFS
MFR: DUNN EDWARDS
COLOR: DEC795 GRAY PEARL
COLOR FINISH: MATTE/FLAT
MATERIAL FINISH: SAND
NOTES: APPLY SEMI-GLOSS FINISH TO METALS.
- PT2 FIELD & ACCENT PAINT
MFR: DUNN EDWARDS
COLOR: DE6368 WALRUS
COLOR FINISH: FLAT/MATTE
MATERIAL FINISH: SAND
NOTES: APPLY SEMI-GLOSS FINISH TO METALS.
- PT3 ACCENT PAINT - STEEL
MFR: DUNN EDWARDS
COLOR: DE6378 JET
COLOR FINISH: SEMI-GLOSS
NOTES: APPLY SEMI-GLOSS FINISH TO METALS.
- PT4 ACCENT PAINT - MOLDED TRIM
MFR: DUNN EDWARDS
COLOR: ACE RED
COLOR FINISH: SATIN
MATERIAL FINISH: SMOOTH/SAND
NOTES: APPLY SEMI-GLOSS FINISH TO METALS.
- WD1 WOOD PLANK SIDING (ALUMINUM)
MFR: KNOTWOOD OR EQ.
COLOR: YELLOW CEDAR OR EQ.
MODEL: KEC150 (6" CLADDING)
- MT3 METAL ROOF/WALL PANEL
MFR: AEP SPAN
TYPE: SPAN-LOK, 24ga
COLOR: SILVERSMITH OR EQ.
- MT4 ALUMINUM STOREFRONT
MFR: ARCADIA
COLOR: STANDARD DARK BRONZE
- MU1 BRICK VENEER
ALL HORIZONTAL JOINTS RAKED
MFR: INTERSTATE BRICK
COLOR: MIDNIGHT BLACK
- MU2 STANDARD MASONRY BLOCK
BLOCK FILLED PRIMER AND PAINTED
ALL HORIZONTAL JOINTS RAKED
MFR: INTERSTATE BRICK
COLOR: DE6368 WALRUS



carhuff+cueva
 architects, llc
 2930 n swan rd #210
 tucson, arizona 85712
 phone 520.577.4560
 www.cca-az.com

ACE HARDWARE + SHOPS
 CADENCE CENTER PHASE 2
 RAY ROAD & ELLSWORTH ROAD

SCHEMATIC DESIGN

REVISION	DATE	DESCRIPTION	BY

PROJECT NO: **22-1000**

DATE: **10.06.2022**

SCALE: **As indicated** DRAWN BY: **AK**

DRAWING TITLE: **SCHEMATIC ELEVATIONS ACE HARDWARE - CONT.**

DRAWING NUMBER: **A202**



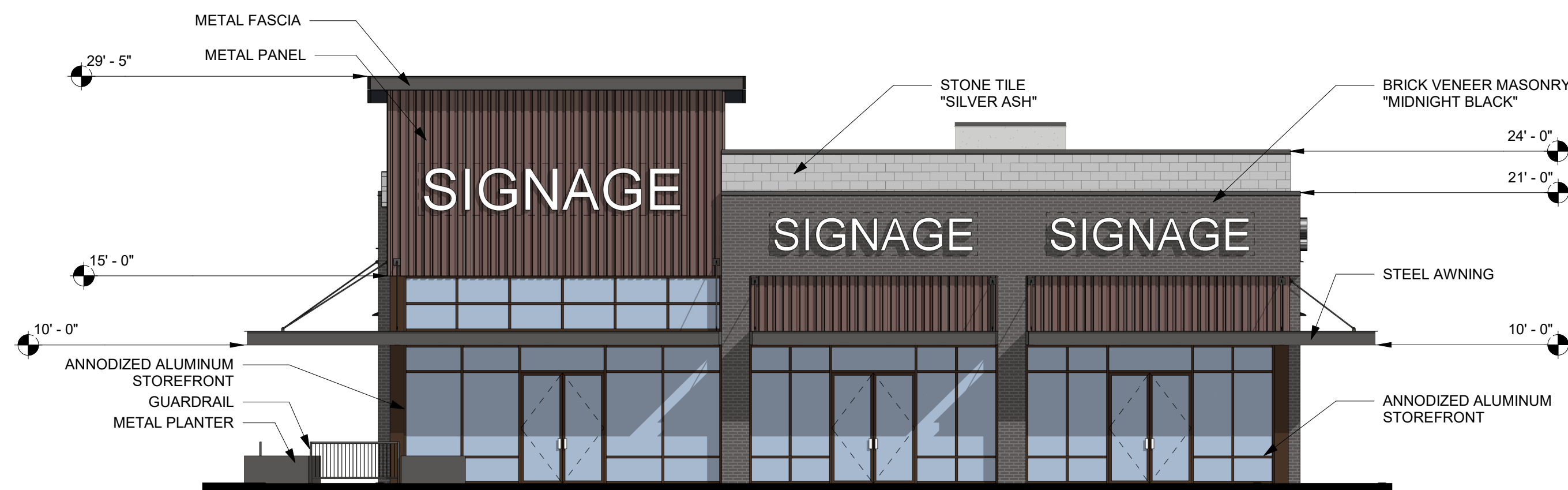
4 CADENCE SHOPS - WEST ELEVATION
A201 1/8" = 1'-0"



3 CADENCE SHOPS - SOUTH ELEVATION
A201 1/8" = 1'-0"



2 CADENCE SHOPS - EAST ELEVATION
A201 1/8" = 1'-0"



1 CADENCE SHOPS - NORTH ELEVATION
A201 1/8" = 1'-0"

MATERIAL CALCULATIONS

NORTH ELEVATION

BRICK VENEER MASONRY - 327.05 SF (18.85%)
 STONE TILE - 123.38 (7.11%)
 METAL WALL PANEL - 473.66 SF (27.30%)
 PREFINISHED METAL FASCIA/AWNING - 104.78 SF (6.04%)
 ANODIZED ALUMINUM STOREFRONT - 706.00 SF (40.70%)
TOTAL AREA - 1,734.87 SF (100%)

EAST ELEVATION

BRICK VENEER MASONRY - 190.80 SF (11.77%)
 STONE TILE - 202.21 (12.48%)
 METAL WALL PANEL - 320.15 SF (19.76%)
 EIFS PAINTED - 349.42 SF (21.57%)
 PREFINISHED METAL FASCIA/AWNING - 111.78 SF (6.90%)
 ANODIZED ALUMINUM STOREFRONT - 445.99 SF (27.52%)
TOTAL AREA - 1,620.35 SF (100%)

SOUTH ELEVATION

BRICK VENEER MASONRY - 211.79 SF (13.15%)
 STONE TILE - 407.19 SF (25.28%)
 EIFS PAINTED - 555.05 SF (34.46%)
 PREFINISHED METAL FASCIA/AWNING - 152.54 SF (9.47%)
 ANODIZED ALUMINUM STOREFRONT - 260.00 SF (16.14%)
 METAL DOOR - 23.89 SF (1.50%)
TOTAL AREA - 1,610.46 SF (100%)

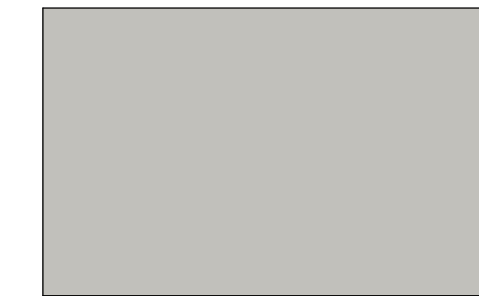
WEST ELEVATION

BRICK VENEER MASONRY - 163.24 SF (10.04%)
 STONE TILE - 341.79 SF (21.02%)
 EIFS PAINTED - 649.27 SF (39.93%)
 METAL WALL PANEL - 150.80 SF (9.27%)
 PREFINISHED METAL FASCIA/AWNING - 130.74 SF (8.04%)
 ANODIZED ALUMINUM STOREFRONT - 190.00 SF (11.70%)
TOTAL AREA - 1,625.84 SF (100%)

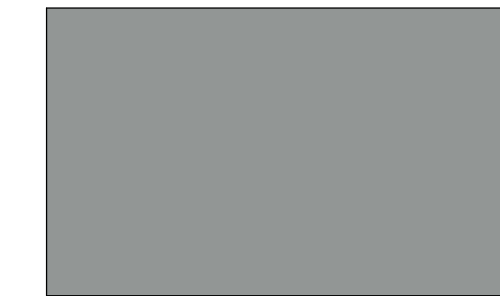
EXTERIOR FINISHES

- PT1 FIELD PAINT - EIFS & CMU
MFR: DUNN EDWARDS
COLOR: DEC795 GRAY PEARL
COLOR FINISH: MATTE/FLAT
MATERIAL FINISH: SAND
NOTES: APPLY SEMI-GLOSS FINISH TO METALS.
- PT2 ACCENT PAINT - MOLDED TRIM
MFR: DUNN EDWARDS
COLOR: DE6368 WALRUS
COLOR FINISH: FLAT/MATTE
MATERIAL FINISH: SAND
NOTES: APPLY SEMI-GLOSS FINISH TO METALS.
- PT3 ACCENT PAINT - STEEL
MFR: DUNN EDWARDS
COLOR: DE6378 JET
COLOR FINISH: SEMI-GLOSS
NOTES: APPLY SEMI-GLOSS FINISH TO METALS.
- MT2 METAL WALL PANEL (PAINTED)
MFR: AEP SPAN
TYPE: BOX RIB, 24ga
COLOR: DE6034 RAISIN IN THE SUN
COLOR FINISH: SEMI-GLOSS
- MT4 ALUMINUM STOREFRONT
MFR: ARCADIA
COLOR: STANDARD DARK BRONZE
- MU1 BRICK VENEER
ALL HORIZONTAL JOINTS RAKED
MFR: INTERSTATE BRICK
COLOR: MIDNIGHT BLACK
- SV1 STONE TILE
MFR: CORONADO OR EQ.
COLOR: SILVER ASH OR EQ.
STONE TILE (SIM. TO EXPOSED CMU)

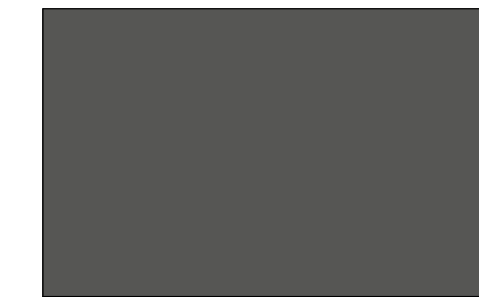
PAINT
BY DUNN EDWARDS



PT1 - GRAY PEARL
DEC795



PT2 - WALRUS
DE6368



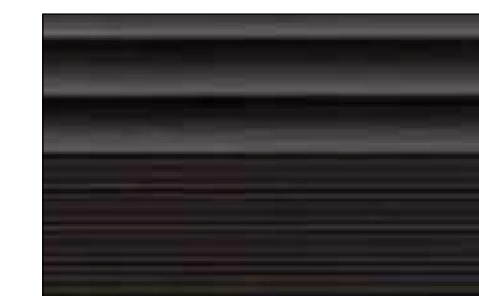
PT3 - JET
DE6378

METAL WALL PANEL
BY TBD



MT2 - RAISIN IN THE SUN
DE6034

ALUMINUM STOREFRONT
BY ARCADIA



MT4 - DARK BRONZE

GLAZING
BY TBD



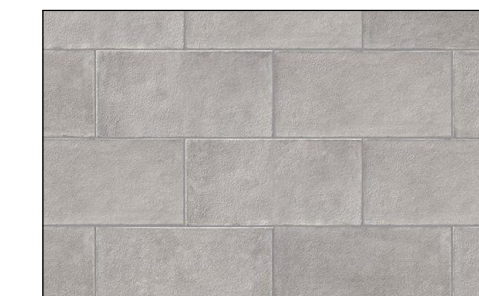
MT4 - DARK BRONZE

CONCRETE MASONRY
BY INTERSTATE BRICK

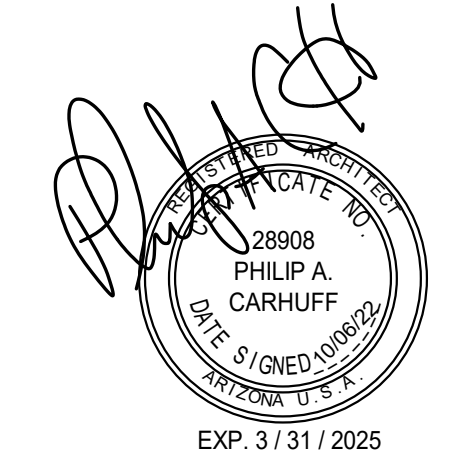


MU1 - MIDNIGHT BLACK
INTERSTATE BRICK

STONE TILE
BY CORONADO OR EQ.



SV1 - SILVER ASH OR EQ.
STONE TILE (SIM. TO EXPOSED CMU)



2930 n swan rd #210
tucson, arizona 85712
phone 520.577.4560
www.cca-az.com

ACE HARDWARE + SHOPS
CADENCE CENTER PHASE 2
RAY ROAD & ELLSWORTH ROAD

SCHEMATIC DESIGN

REVISION	DATE	DESCRIPTION	BY

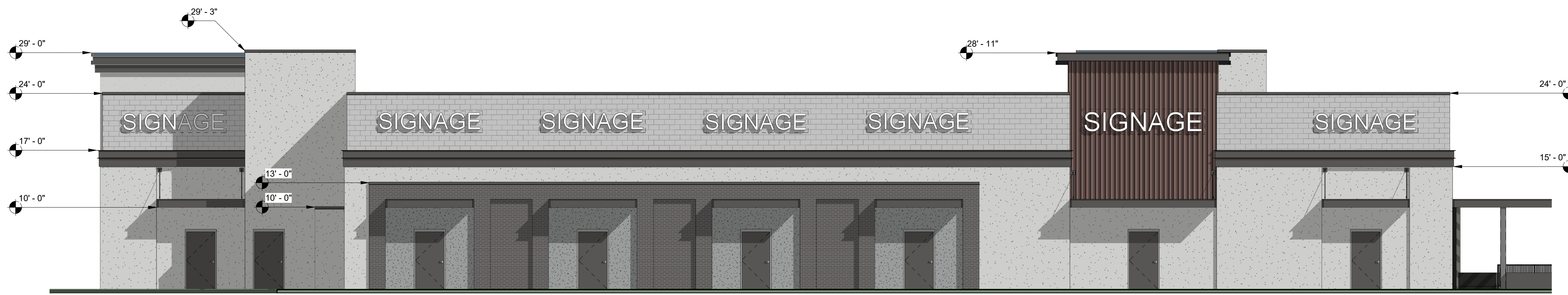
PROJECT NO. **22-1000**

DATE **10.06.2022**

SCALE **As indicated** DRAWN BY **AK**

DRAWING TITLE
CADENCE SHOPS SCHEMATIC ELEVATIONS

DRAWING NUMBER
A201



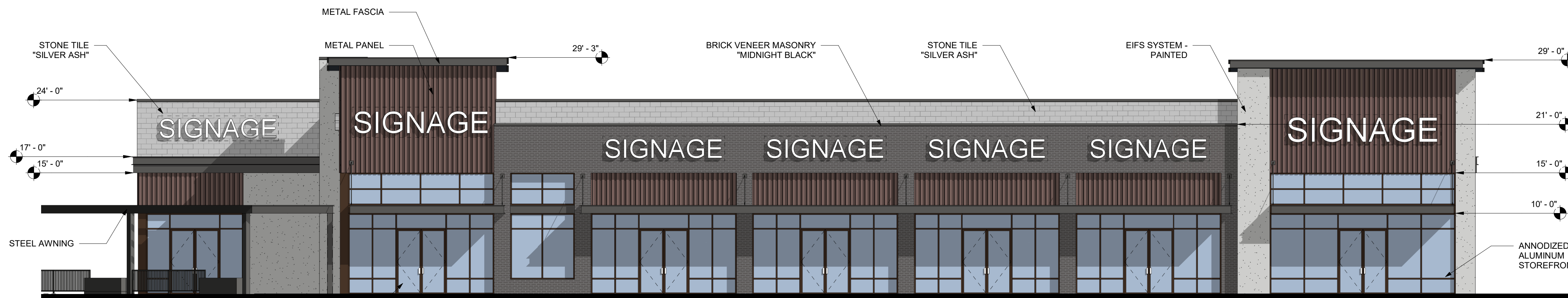
1 RAY SHOPS - NORTH ELEVATION
A201 1/8" = 1'-0"



3 RAY SHOPS - WEST ELEVATION
A201 1/8" = 1'-0"



2 RAY SHOPS - EAST ELEVATION
A201 1/8" = 1'-0"



4 RAY SHOPS - SOUTH ELEVATION
A201 1/8" = 1'-0"

MATERIAL CALCULATIONS

NORTH ELEVATION

BRICK VENEER MASONRY - 504.42 SF (11.51%)
 STONE TILE - 957.82 (21.86%)
 EIFS PAINTED - 1,787.98 SF (40.81%)
 METAL WALL PANEL - 305.02 SF (6.97%)
 PREFINISHED METAL FASCIA/AWNING - 601.26 SF (13.72%)
 METAL DOOR - 224.89 SF (5.13%)
TOTAL AREA - 4,381.39 SF (100%)

EAST ELEVATION

BRICK VENEER MASONRY - 401.72 SF (24.83%)
 STONE TILE - 316.68 (19.57%)
 EIFS PAINTED - 727.68 SF (44.98%)
 PREFINISHED METAL FASCIA/AWNING - 122.89 SF (7.60%)
 METAL DOOR - 48.89 SF (3.02%)
TOTAL AREA - 1,617.86 SF (100%)

WEST ELEVATION

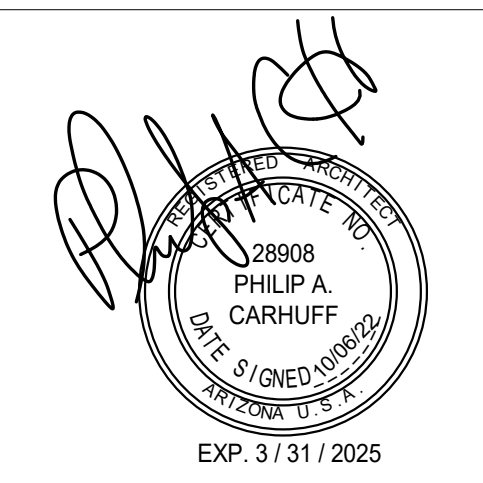
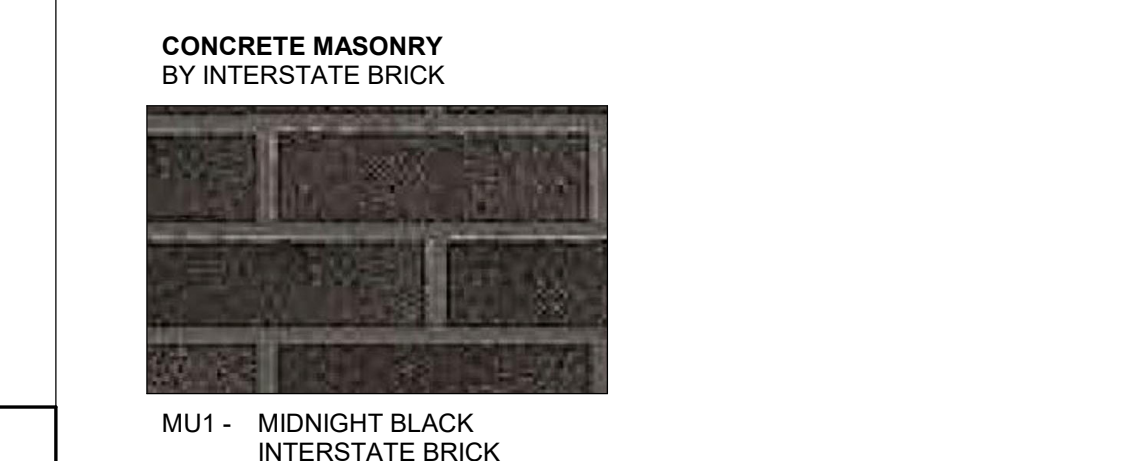
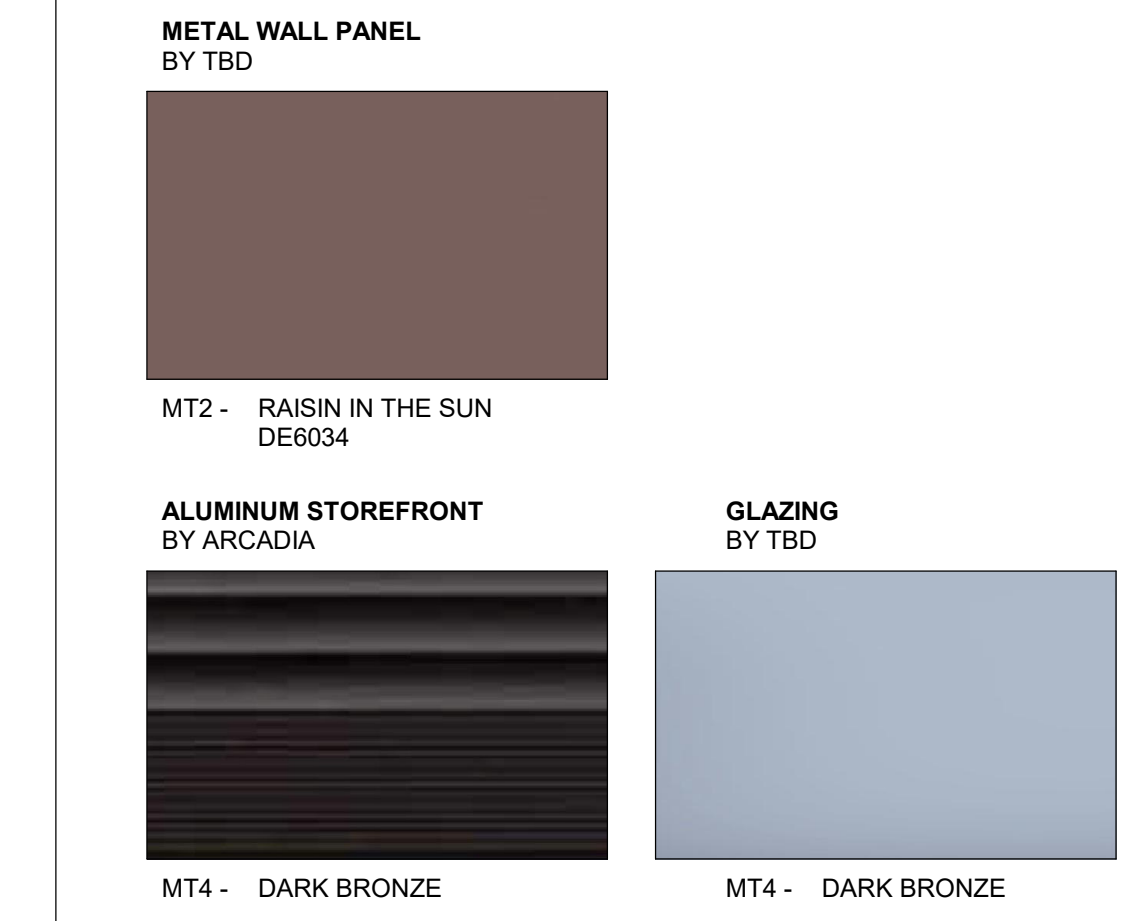
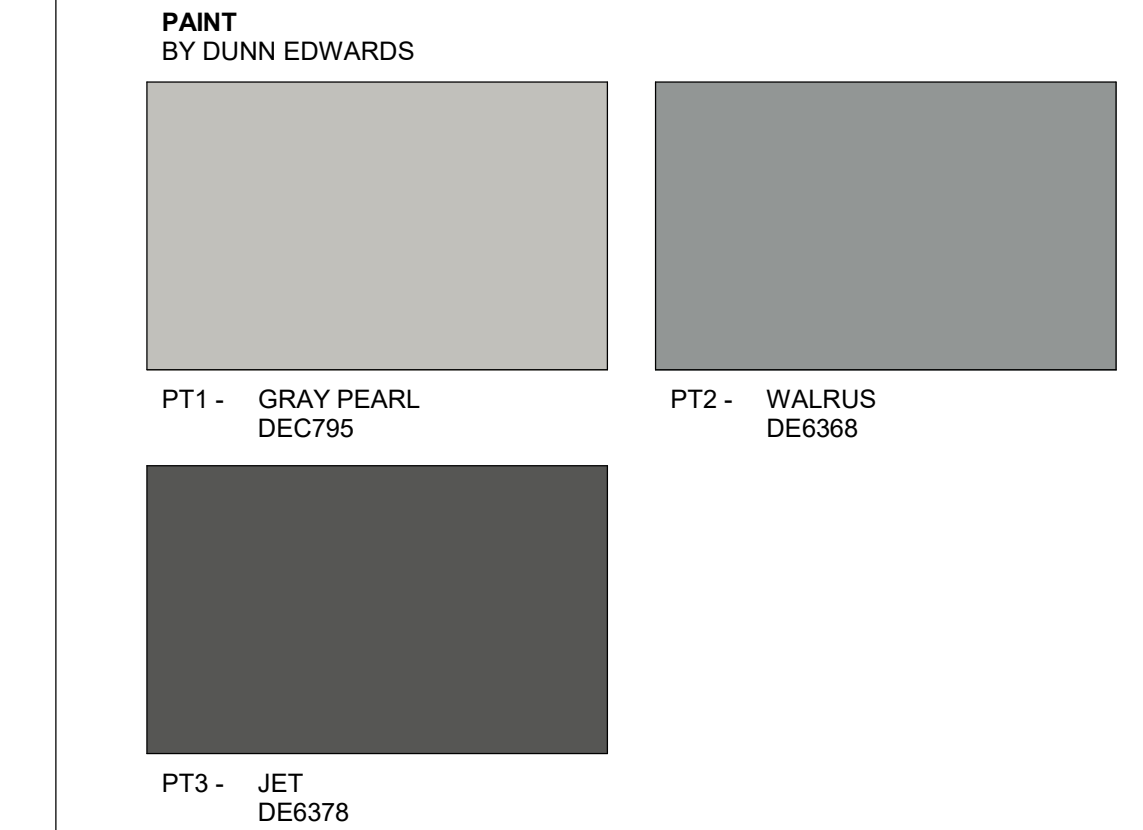
STONE TILE - 288.48 SF (18.44%)
 EIFS PAINTED - 505.34 SF (32.31%)
 METAL WALL PANEL - 253.94 SF (16.24%)
 PREFINISHED METAL FASCIA/AWNING - 108.09 SF (6.91%)
 ANODIZED ALUMINUM STOREFRONT - 408.13 SF (26.10%)
TOTAL AREA - 1,563.98 SF (100%)

SOUTH ELEVATION

BRICK VENEER MASONRY - 746.28 SF (17.57%)
 STONE TILE - 435.55 SF (10.25%)
 EIFS PAINTED - 394.48 SF (9.30%)
 METAL WALL PANEL - 904.75 SF (21.30%)
 PREFINISHED METAL FASCIA/AWNING - 230.09 SF (5.42%)
 ANODIZED ALUMINUM STOREFRONT - 1,535.97 SF (36.16%)
TOTAL AREA - 4,247.12 SF (100%)

EXTERIOR FINISHES

- PT1 FIELD PAINT - EIFS & CMU
MFR: DUNN EDWARDS
COLOR: DEC795 GRAY PEARL
COLOR FINISH: MATTE/FLAT
MATERIAL FINISH: SAND
NOTES: APPLY SEMI-GLOSS FINISH TO METALS.
- PT2 ACCENT PAINT - MOLDED TRIM
MFR: DUNN EDWARDS
COLOR: DE6388 WALRUS
COLOR FINISH: FLAT/MATTE
MATERIAL FINISH: SAND
NOTES: APPLY SEMI-GLOSS FINISH TO METALS.
- PT3 ACCENT PAINT - STEEL
MFR: DUNN EDWARDS
COLOR: DE6378 JET
COLOR FINISH: SEMI-GLOSS
NOTES: APPLY SEMI-GLOSS FINISH TO METALS.
- MT2 METAL WALL PANEL (PAINTED)
MFR: AEP SPAN
TYPE: BOX RIB, 24ga
COLOR: DE6034 RAISIN IN THE SUN
COLOR FINISH: SEMI-GLOSS
- MT4 ALUMINUM STOREFRONT
MFR: ARCADIA
COLOR: STANDARD DARK BRONZE
- MU1 BRICK VENEER
ALL HORIZONTAL JOINTS RAKED
MFR: INTERSTATE BRICK
COLOR: MIDNIGHT BLACK
- SV1 STONE TILE
MFR: CORONADO OR EQ.
COLOR: SILVER ASH OR EQ.
STONE TILE (SIM. TO EXPOSED CMU)



2930 n swan rd #210
 tucson, arizona 85712
 phone 520.577.4560
 www.cca-az.com
 © carhuff + cueva architects, llc 2022 all rights reserved

ACE HARDWARE + SHOPS
 CADENCE CENTER PHASE 2
 RAY ROAD & ELLSWORTH ROAD

SCHEMATIC DESIGN

REVISION	DATE	DESCRIPTION	BY

PROJECT NO. **22-1000**

DATE **10.06.2022**

SCALE **As indicated** DRAWN BY **AK**

DRAWING TITLE
RAY SHOPS SCHEMATIC ELEVATIONS

DRAWING NUMBER
A201