

# Downtown Façade Improvement Program

**Jeff McVay**

Manager of Downtown Transformation

**Anthony Rodriguez**

Downtown Transformation Project Manager

**Bryce Albretsen**

Engineering Sr. Civil Engineer

# PROGRAM OVERVIEW

---

- Preference for properties with colonnade
- Program Area: Country Club to Center, 1st St to 1st Ave
- City managed design and construction
- Historically sensitive design
- Private participants must contribute 5% of the total estimated direct construction cost





# PROPERTIES





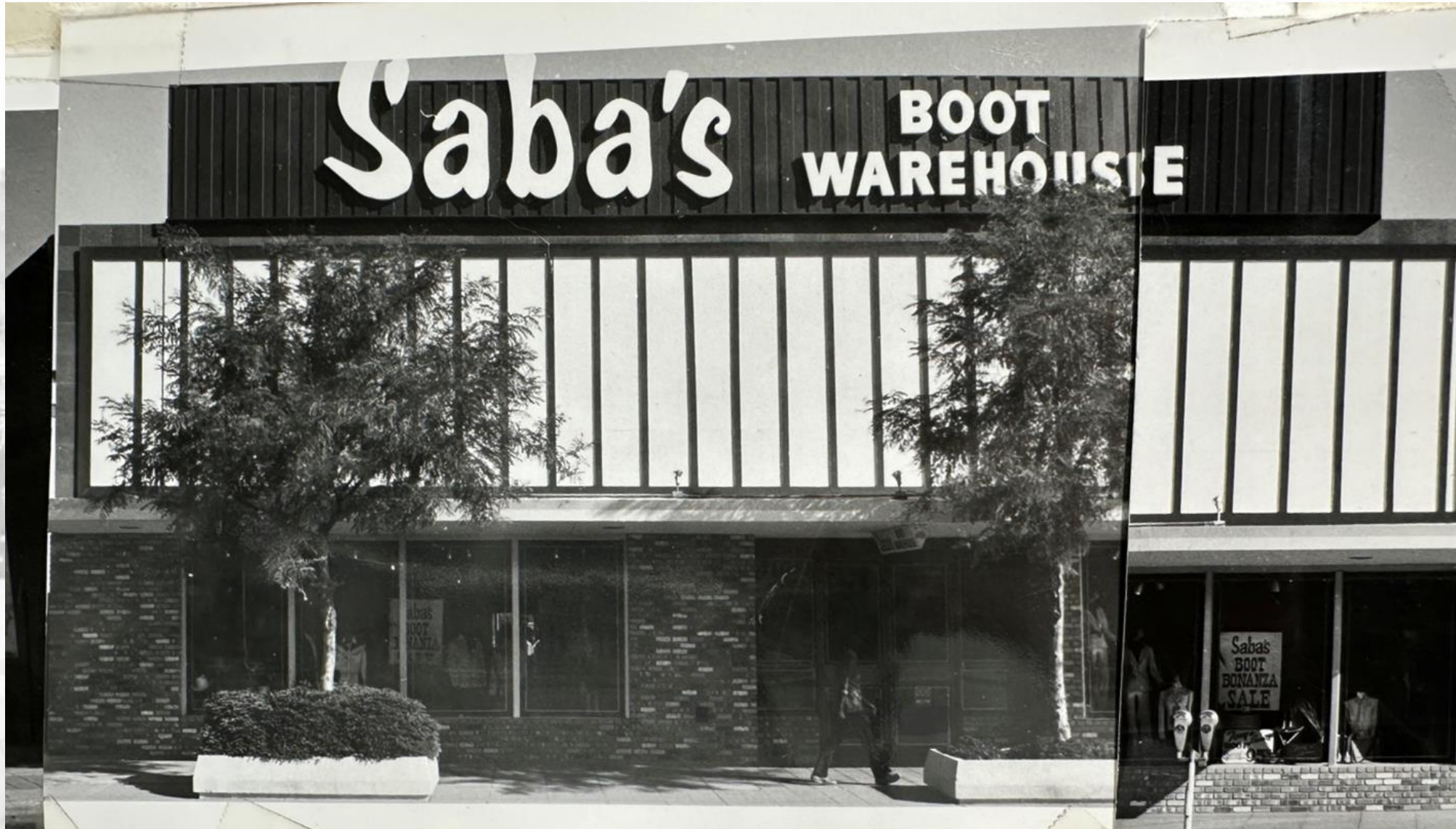
# 18 W. MAIN ST



- 18 W. Main St-  
Sonoran Rows (lease  
signed)



# 18 W. MAIN ST





# 18 W. MAIN ST





# 45 & 47 W. MAIN ST



- 45 W. Main St- Linton-Milano Pianos
- 47 W. Main St- Le Studio Salon



# 45 & 47 W. MAIN ST





# 45 & 47 W. MAIN ST





# 113-119 W. MAIN ST



- 113-119 W. Main St- Tre Bella
- Would be part of removing colonnade from MacDonald to Robson



113-119 W. MAIN ST





113-119 W. MAIN ST





# 149 W. MAIN ST



- 149 W. Main St-  
Shirttail
- Would be part of  
removing colonnade  
from MacDonald to  
Robson



# 149 W. MAIN ST



# 149 W. MAIN ST

---





# 155 W. MAIN ST



- 155 W. Main St- AZ Distilling Co.
- Would be part of removing colonnade from MacDonald to Robson

# 155 W. MAIN ST





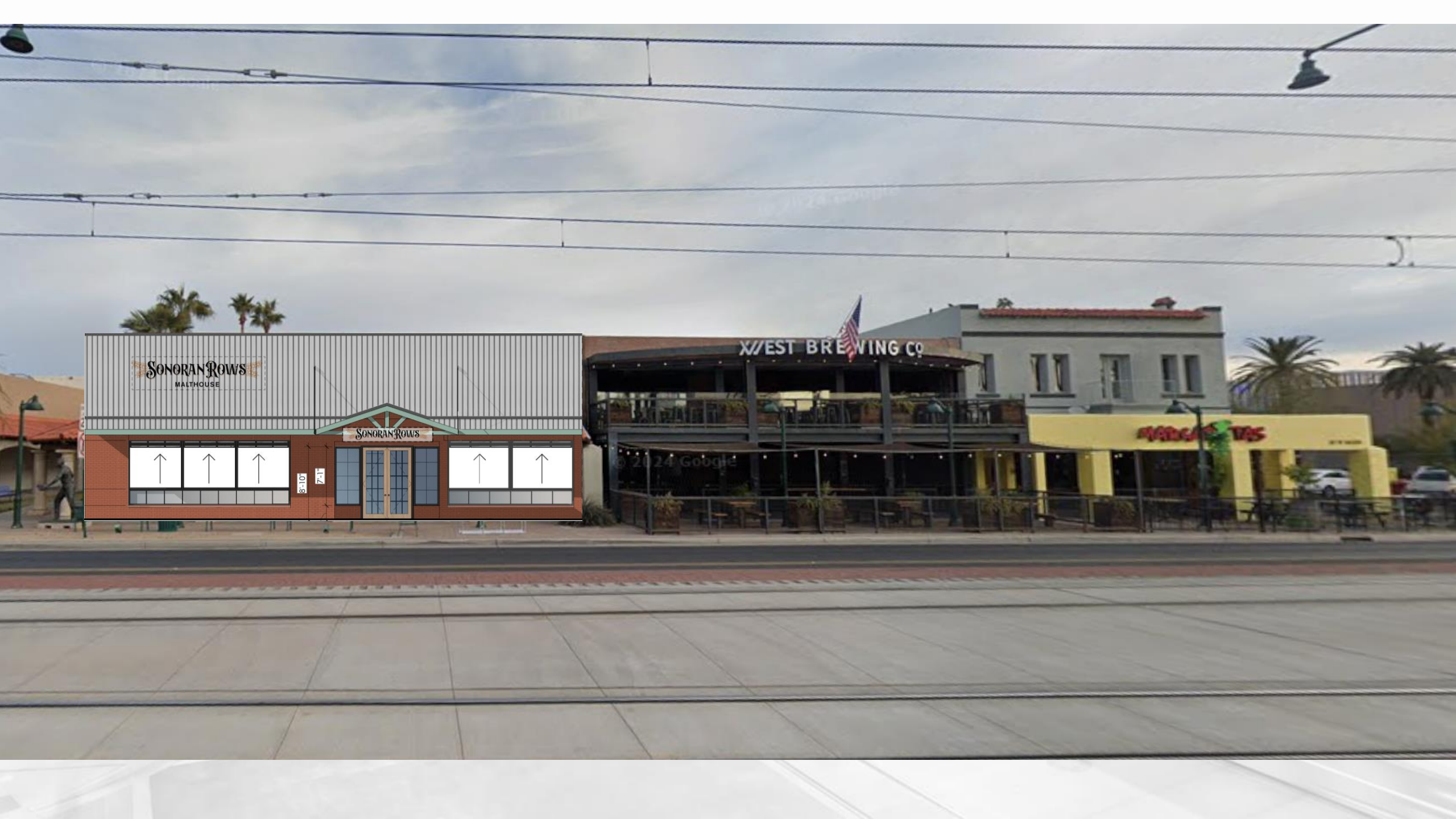
155 W. MAIN ST



A grayscale photograph of a city street scene. In the foreground, a tram is moving from left to right, blurred to indicate motion. The street has multiple lanes and a crosswalk. In the background, there are several buildings, including a large, ornate one on the left and a modern, glass-fronted one on the right. Palm trees and other vegetation are scattered throughout the scene. The word "QUESTIONS" is overlaid in the center in a bold, orange, sans-serif font.

QUESTIONS









© 2022 Google

PIANOS

le studio



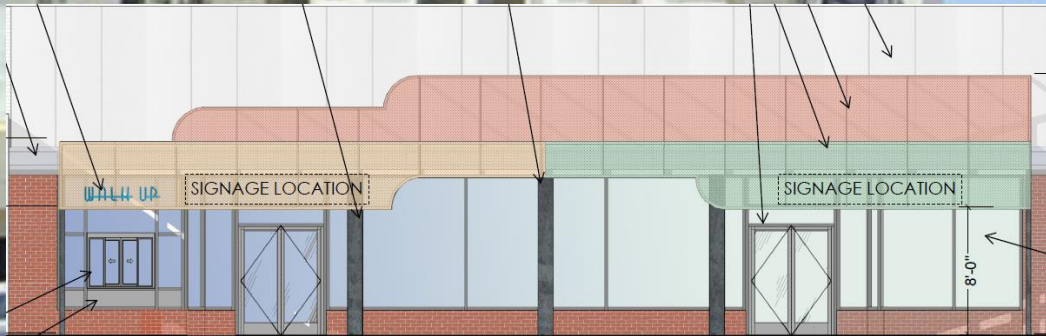








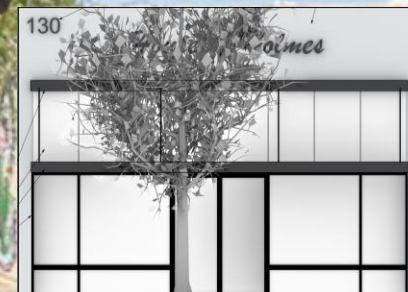


















as 3024 couple

ARIZONA DISTILLING CO





PHANTOM FOX  
BEER CO