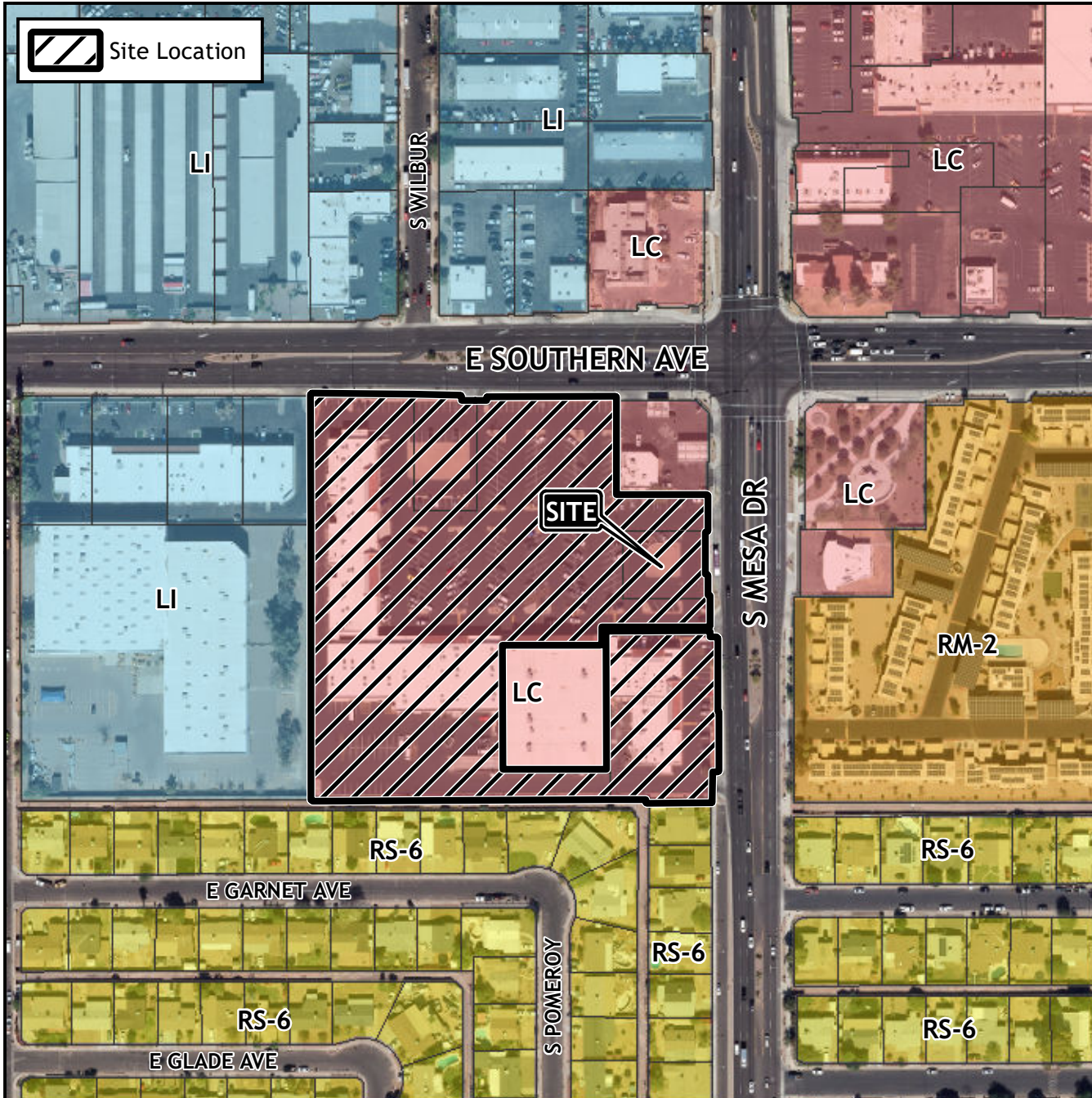


# Board of Adjustment Vicinity Map: BOA24-00435

# Case Details



### Case:

BOA24-00435

### Site / Address:

(District 4). Within the 300 Block of East Southern Avenue (south side) and the 1200 block of South Mesa Drive (west side). Located west of Mesa Drive and south of Southern Avenue.

### Request:

Requesting a Development Incentive Permit (DIP) for a limited service restaurant with drive-thru facilities in the Limited Commercial (LC) District, and a Substantial Conformance Improvement Permit (SCIP) to allow deviations from certain development standards for site improvements associated with the development of a limited service restaurant with drive-thru facilities in the Limited Commercial (LC) District.

