

KEYNOTES LEGEND

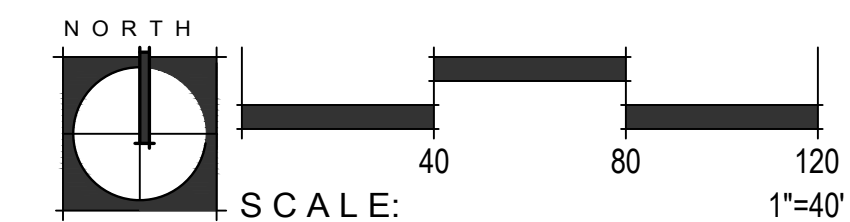
- ① MONUMENT SIGNAGE, SEE DETAIL 1 ON SHEET H201
- ② 24" STEEL PLANTER, NATURAL FINISH
- ③ ENTRY MONUMENT, SEE DETAIL 2 ON SHEET H201
- ④ 6" CMU PERIMETER WALL, SEE DETAIL 3 ON SHEET H201
- ⑤ PATIO WALL, PER ARCHITECTURE
- ⑥ STABILIZED DG PATH
- ⑦ PEDESTRIAN WALKWAY
- ⑧ SIDEWALK
- ⑨ EXISTING SIDEWALK TO REMAIN
- ⑩ PARKING
- ⑪ LOADING
- ⑫ BIKE RACKS
- ⑬ STOOP WITH RAILING, PER ARCHITECTURE

NOTE:
SEE LANDSCAPE PLANS FOR PLANTING

HARDSCAPE LEGEND

- PAVING**
- [MAIN STREET VEHICULAR CONCRETE PAVING]
INTEGRAL COLOR: PEWTER BY DAVIS COLORS,
FINISH: EXPOSED AGGREGATE.
 - [MAIN STREET CONCRETE PEDESTRIAN PAVING]
INTEGRAL COLOR: OUTBACK BY DAVIS COLORS,
FINISH: ACID ETCH
 - [CONCRETE PEDESTRIAN WALKWAY PAVING]
COLOR: STANDARD GRAY
FINISH: ACID ETCH
 - [MAIN STREET PARKING VEHICULAR PAVER]
4" X 8" HOLLAND STONE, COLOR: CHARCOAL
PATTERN: HERRINGBONE
 - [POOL DECK PAVER]
ARTISTIC PAVERS DESERTLOCK,
COLOR: COOL WHITE, POLISHED AND ANTIQUED
 - [FEATURE PEDESTRIAN & VEHICULAR PAVER]
4" X 20" LINEAR PAVER BY ACKERSTONE
COLOR: GRANADA WHITE
PATTERN: RUNNING BOND
 - [NORDIC SPA ENTRY FAUX WOOD FEATURE PAVER]
STEPSTONE MADERASTONE PAVERS,
COLOR: CAFE BROWN
 - [DECOMPOSED GRANITE] WITH PLANTING
1" SCREENED SANTA FE BROWN
SEE LANDSCAPE PLANS FOR PLANTING
 - [STABILIZED DECOMPOSED GRANITE]
1/4" MINUS SANTA FE BROWN
 - [ARTIFICIAL TURF AT COURTYARDS]
PLAY LAWN. DUPONT™ FOREVERLAWN®
SELECT HD. 115 OUNCE. 1-3/4" BLADE HEIGHT.
BY FOREVER LAWN. PHONE: 623.764.1208
 - [ARTIFICIAL TURF AT DOG RUN]
K9GRASS CLASSIC. 87 OUNCE. 3/4" BLADE HEIGHT.
BY FOREVER LAWN. PHONE: 623.764.1208
 - [DETECTABLE WARNING PLATE]
NEENAH ENTERPRISES INC.

- NOTE:
1. ALL PEDESTRIAN WALKWAYS ARE 5' MIN. IN WIDTH.
 2. MAIN STREET VEHICULAR DRIVE TO BE FLUSH WITH ADJACENT PEDESTRIAN WALKWAYS.





KEYNOTES LEGEND

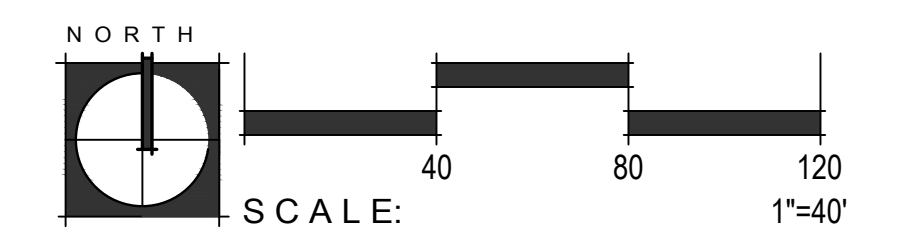
- ① MONUMENT SIGNAGE, SEE DETAIL 1 ON SHEET H201
- ② 24" STEEL PLANTER, NATURAL FINISH
- ③ ENTRY MONUMENT, SEE DETAIL 2 ON SHEET H201
- ④ 6" CMU PERIMETER WALL, SEE DETAIL 3 ON SHEET H201
- ⑤ PATIO WALL, PER ARCHITECTURE
- ⑥ STABILIZED DG PATH
- ⑦ PEDESTRIAN WALKWAY
- ⑧ SIDEWALK
- ⑨ EXISTING SIDEWALK TO REMAIN
- ⑩ PARKING
- ⑪ LOADING
- ⑫ BIKE RACKS
- ⑬ STOOP WITH RAILING, PER ARCHITECTURE

NOTE:
SEE LANDSCAPE PLANS FOR PLANTING

HARDSCAPE LEGEND

- PAVING**
- [MAIN STREET VEHICULAR CONCRETE PAVING]
INTEGRAL COLOR: PEWTER BY DAVIS COLORS,
FINISH: EXPOSED AGGREGATE.
 - [MAIN STREET CONCRETE PEDESTRIAN PAVING]
INTEGRAL COLOR: OUTBACK BY DAVIS COLORS,
FINISH: ACID ETCH
 - [CONCRETE PEDESTRIAN WALKWAY PAVING]
COLOR: STANDARD GRAY
FINISH: ACID ETCH
 - [MAIN STREET PARKING VEHICULAR PAVER]
4" X 8" HOLLAND STONE, COLOR: CHARCOAL
PATTERN: HERRINGBONE
 - [POOL DECK PAVER]
ARTISTIC PAVERS DESERTLOCK,
COLOR: COOL WHITE, POLISHED AND ANTIQUED
 - [FEATURE PEDESTRIAN & VEHICULAR PAVER]
4" X 20" LINEAR PAVER BY ACKERSTONE
COLOR: GRANADA WHITE
PATTERN: RUNNING BOND
 - [NORDIC SPA ENTRY FAUX WOOD FEATURE PAVER]
STEPSTONE MADERASTONE PAVERS,
COLOR: CAFE BROWN
 - [DECOMPOSED GRANITE] WITH PLANTING
1" SCREENED SANTA FE BROWN
SEE LANDSCAPE PLANS FOR PLANTING
 - [STABILIZED DECOMPOSED GRANITE]
1/4" MINUS SANTA FE BROWN
 - [ARTIFICIAL TURF AT COURTYARDS]
PLAY LAWN. DUPONT™ FOREVERLAWN®
SELECT HD. 115 OUNCE. 1-3/4" BLADE HEIGHT.
BY FOREVER LAWN. PHONE: 623.764.1208
 - [ARTIFICIAL TURF AT DOG RUN]
K9GRASS CLASSIC. 87 OUNCE. 3/4" BLADE HEIGHT.
BY FOREVER LAWN. PHONE: 623.764.1208
 - [DETECTABLE WARNING PLATE]
NEENAH ENTERPRISES INC.

- NOTE:
1. ALL PEDESTRIAN WALKWAYS ARE 5' MIN. IN WIDTH.
 2. MAIN STREET VEHICULAR DRIVE TO BE FLUSH WITH ADJACENT PEDESTRIAN WALKWAYS.



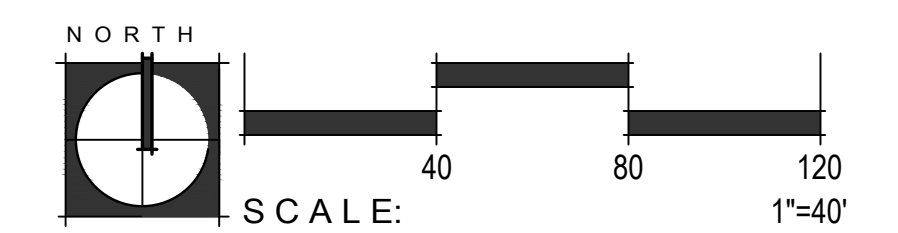


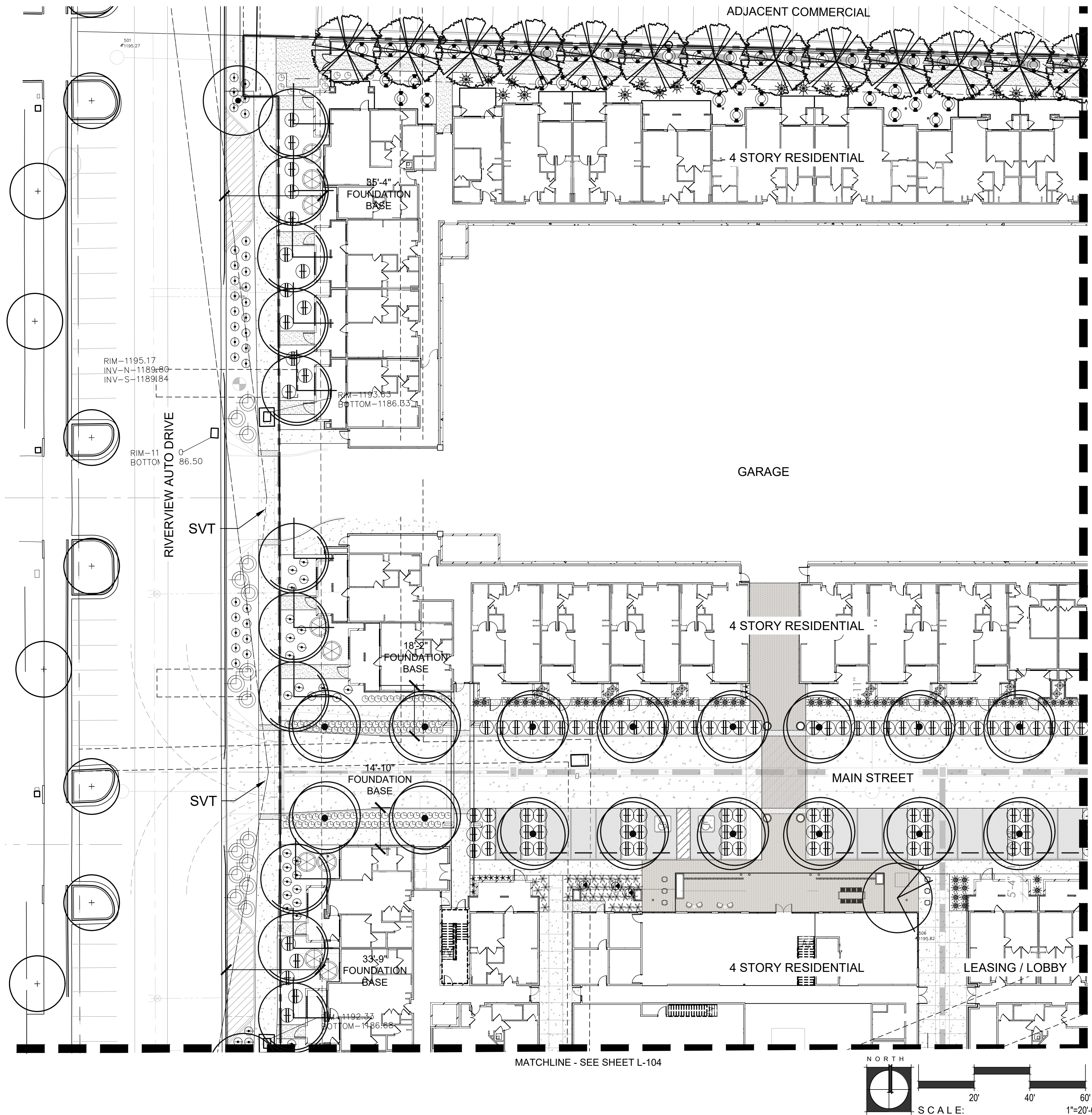
PLANT LEGEND

BOTANICAL NAME SYM. COMMON NAME	SIZE	MIN. CAL HT X W	QTY.
TREES			
<i>EXISTING TREE</i>			
<i>EXISTING PALM</i>			
CHAMAEROPS HUMILIS MEDITERRANEAN FAN PALM	24" BOX AS NOTED		5
CAESALPINIA CACALACO SMOOTHIE THORNLESS CASCALOTE	24" BOX MULTI	1.5" CAL. 7'H X 4'W	6
CITRUS SPP. CITRUS	TBD	TBD	11
FICUS NITIDA INDIAN LAUREL	60" BOX	4.0" CAL. 12'H X 6'W	5
FRAXINUS VELUTINA 'FAN TEX' FAN TEX ASH	36" BOX	2.5" CAL. 4.0" CAL.	26
MAGNOLIA GRANDIFLORA SOUTHERN MAGNOLIA	48" BOX	14'H X 8'W	1
PHOENIX DACTYLIFERA DATE PALM	18" TRUNK HT	12'H X 6'W	21
PISTACIA X 'RED PUSH' RED PUSH PISTACHE	36" BOX	2.25" CAL. 11'H X 5'W	26
QUERCUS VIRGINIANA HERITAGE LIVE OAK	TBD	TBD	6
ULMUS PARVIFOLIA CHINESE ELM	36" BOX	2.5" CAL. 12'H X 8'W	54
SHRUBS			
BOUGAINVILLEA 'LA JOLLA' LA JOLLA BOUGAINVILLEA	5 GAL		62
CARISSA MACROCARPA NATAL PLUM	5 GAL		56
LEUCOPHYLLUM LANGMANIAE 'RIO BRAVO' TEXAS RANGER	5 GAL		72
MUHLENBERGIA CAPILLARIS 'REGAL MIST' REGAL MIST MUHLY	5 GAL		153
MUHLENBERGIA DUBIA PINE MUHLY	5 GAL		274
RUELLIA PENINSULARIS BAJA RUELLIA	5 GAL		50
RUELLIA SIMPLEX MEXICAN PETUNIA	1 GAL		156
PHYLLOSTACHYS AUREA GOLDEN BAMBOO	15 GAL 30" DEEP ROOT BARRIER		25
ACCENTS			
AGAVE GEMINIFLORA TWIN-FLOWERED AGAVE	5 GAL		14
AGAVE WEBERI WEBER'S AGAVE	5 GAL		5
ALOE BARBADENSIS MEDICAL ALOE VERA 'ORANGE'	5 GAL		62
ALOE BARBADENSIS MEDICAL ALOE VERA 'YELLOW'	5 GAL		295
ALOE 'BLUE ELF' BLUE ELF ALOE	1 GAL		154
CEREUS HILDMANNIANUS HEDGE CACTUS	15 GAL		24
CYCAS REVOLUTA SAGO PALM	15 GAL		11
DASYLIRION WHEELERI DESERT SPOON	5 GAL		167
DIETES BICOLOR EVERGREEN IRIS	5 GAL		161
ECHINOCACTUS GRUSONII GOLDEN BARREL CACTUS	12" DIA.		15
HEPERALOE PARVIFLORA 'DESERT DUSK' DESERT DUSK HEPERALOE	5 GAL		148
HEPERALOE FUNIFERA GIANT HEPERALOE	5 GAL		14
PHOENIX ROBELENII PYGMY DATE PALM	24" BOX		3
PACHYCREUS MARGINATUS MEXICAN FENCE POST	15 GAL (3) ARMS MIN.		8
YUCCA ROSTRATA BEAKED YUCCA	24" BOX TRIMMED TRUNKS		5
YUCCA RUPICOLA TWISTED LEAF YUCCA	5 GAL		49
VINES			
FICUS PUMILA CREEPING FIG VINE	15 GAL		42
GROUNDCOVER			
LANTANA X 'NEW GOLD' NEW GOLD LANTANA	5 GAL		517
EREMOPHILA GLABRA 'MINGENEW GOLD' OUTBACK SUNRISE EMU	5 GAL		80
PEDILANTHUS BRACTEATUS TALL SLIPPER PLANT	15 GAL		113
RUELLIA BRITANNIANA 'KATIE' BLUE DWARF RUELLIA	5 GAL		24
SPHAGNETICOLA TRILOBATA YELLOW DOT	5 GAL		377
TRACHELOSPERMUM JASMINOIDES STAR JASMINE	5 GAL		28
TOPDRESS			
1" SCREENED DECOMPOSED GRANITE; 2" DEPTH MIN. COLOR: SANTA FE BROWN; WWW.PIONEERSAND.COM			
2"-3" UNPOLISHED BEACH PEBBLE; COLOR: BLACK; WWW.PIONEERSAND.COM			

CITY OF MESA		PLANTING REQUIREMENTS (PROV./REQ'D)		
LOCATION	LF	TREES	SHRUBS	
N. DOBSON RD REQ'D: 1 TREE AND 6 SHRUBS PER 25 LINEAR FEET OF STREET FRONTAGE (4 TREES AND 16 SHRUBS PER 100')	500 FT	23 / 20	295 / 80	
CUBS WAY REQ'D: 1 TREE AND 4 SHRUBS PER 25 LINEAR FEET OF STREET FRONTAGE (4 TREES AND 16 SHRUBS PER 100')	225 FT	9 / 9	117 / 36	
RIVERVIEW AUTO DRIVE REQ'D: 1 TREE AND 4 SHRUBS PER 25 LINEAR FEET OF STREET FRONTAGE (4 TREES AND 16 SHRUBS PER 100')	580 FT	26 / 24	250 / 93	
PERIMETER REQ'D: A MINIMUM OF 3 NON-DECIDUOUS TREES AND 20 SHRUBS PER 100 LINEAR FEET OF ADJACENT PROPERTY LINE SHALL BE PROVIDED.	650 FT	26 / 20	215 / 130	
BUILDING FOUNDATION REQ'D: A MINIMUM ONE (1) TREE PER 50 LINEAR FEET OR LESS OF EXTERIOR WALL LENGTH OF A BUILDING SHALL BE PROVIDED.	3575 FT	86 / 72		

NOTE: ALL TREES NEXT TO UNDERGROUND UTILITIES WILL HAVE APPROVED ROOT BARRIERS.





PLANT LEGEND

BOTANICAL NAME SYM. COMMON NAME	SIZE	MIN. CAL HT X W	QTY.
TREES			
<i>EXISTING TREE</i>			
<i>EXISTING PALM</i>			
CHAMAEROPS HUMILIS MEDITERRANEAN FAN PALM	24" BOX AS NOTED		5
CAESALPINIA CACALACO SMOOTHIE THORNLESS CASCALOTE	24" BOX MULTI	1.5" CAL. 7'H X 4'W	6
CITRUS SPP. CITRUS	TBD	TBD	11
FICUS NITIDA INDIAN LAUREL	60" BOX	4.0" CAL. 12'H X 6'W	5
FRAXINUS VELUTINA 'FAN TEX' FAN TEX ASH	36" BOX	2.5" CAL. 14'H X 8'W	26
MAGNOLIA GRANDIFLORA SOUTHERN MAGNOLIA	48" BOX	4.0" CAL. 12'H X 6'W	1
PHOENIX DACTYLIFERA DATE PALM	18" TRUNK HT		21
PISTACIA X 'RED PUSH' RED PUSH PISTACHE	36" BOX	2.25" CAL. 11'H X 5'W	26
QUERCUS VIRGINIANA HERITAGE LIVE OAK	TBD	TBD	6
ULMUS PARVIFOLIA CHINESE ELM	36" BOX	2.5" CAL. 12'H X 8'W	54
SHRUBS			
BOUGAINVILLEA 'LA JOLLA' LA JOLLA BOUGAINVILLEA	5 GAL		62
CARISSA MACROCARPA NATAL PLUM	5 GAL		56
LEUCOPHYLLUM LANGMANIAE 'RIO BRAVO' TEXAS RANGER	5 GAL		72
MUHLBERGIA CAPILLARIS 'REGAL MIST' REGAL MIST MUHLY	5 GAL		153
MUHLBERGIA DUBIA PINE MUHLY	5 GAL		274
RUPELLIA PENINSULARIS BAJA RUELLIA	5 GAL		50
RUPELLIA SIMPLEX MEXICAN PETUNIA	1 GAL		156
PHYLLOSTACHYS AUREA GOLDEN BAMBOO	15 GAL		25
ACCENTS			
AGAVE GEMINIFLORA TWIN-FLOWERED AGAVE	5 GAL		14
AGAVE WEBERI WEBER'S AGAVE	5 GAL		5
ALOE BARBADENSIS MEDICAL ALOE VERA 'ORANGE'	5 GAL		62
ALOE BARBADENSIS MEDICAL ALOE VERA 'YELLOW'	5 GAL		295
ALOE 'BLUE ELF' BLUE ELF ALOE	1 GAL		154
CEREUS HILDMANNIANUS HEDGE CACTUS	15 GAL		24
CYCAS REVOLUTA SAGO PALM	15 GAL		11
DASYLIIRION WHEELERI DESERT SPOON	5 GAL		167
DIETES BICOLOR EVERGREEN IRIS	5 GAL		161
ECHINOCACTUS GRUSONII GOLDEN BARREL CACTUS	12" DIA.		15
HESPERALOE PARVIFLORA 'DESERT DUSK' DESERT DUSK HESPERALOE	5 GAL		148
HESPERALOE FUNIFERA GIANT HESPERALOE	5 GAL		14
PHOENIX ROBELENI PYGMY DATE PALM	24" BOX		3
PACHYCEREUS MARGINATUS MEXICAN FENCE POST	15 GAL (3) ARMS MIN.		8
YUCCA ROSTRATA BEAKED YUCCA	24" BOX TRIMMED TRUNKS		5
YUCCA RUPICOLA TWISTED LEAF YUCCA	5 GAL		49
VINES			
FICUS PUMILA CREEPING FIG VINE	15 GAL		42
GROUNDCOVER			
LANTANA X 'NEW GOLD' NEW GOLD LANTANA	5 GAL		517
EREMOPHILA GLABRA 'MINGENW GOLD' OUTBACK SUNRISE EMU	5 GAL		80
PEDILANTHUS BRACTEATUS TALL SLIPPER PLANT	15 GAL		113
RUPELLIA BRITONNIANA 'KATIE' BLUE DWARF RUELLIA	5 GAL		24
SPHAGNETICOLA TRILOBATA YELLOW DOT	5 GAL		377
TRACHELOSPERMUM JASMINOIDES STAR JASMINE	5 GAL		28
TOPDRESS			
1" SCREENED DECOMPOSED GRANITE; 2" DEPTH MIN. COLOR: SANTA FE BROWN; WWW.PIONEERSAND.COM			
2"-3" UNPOLISHED BEACH PEBBLE; COLOR: BLACK; WWW.PIONEERSAND.COM			

NOTE: ALL TREES NEXT TO UNDERGROUND UTILITIES WILL HAVE APPROVED ROOT BARRIERS.



RESIDENCES AT DOBSON ROAD AND CUBS WAY

MESA, ARIZONA
GPA/REZONING/SITE PLAN SUBMITTAL

APRIL 19, 2023

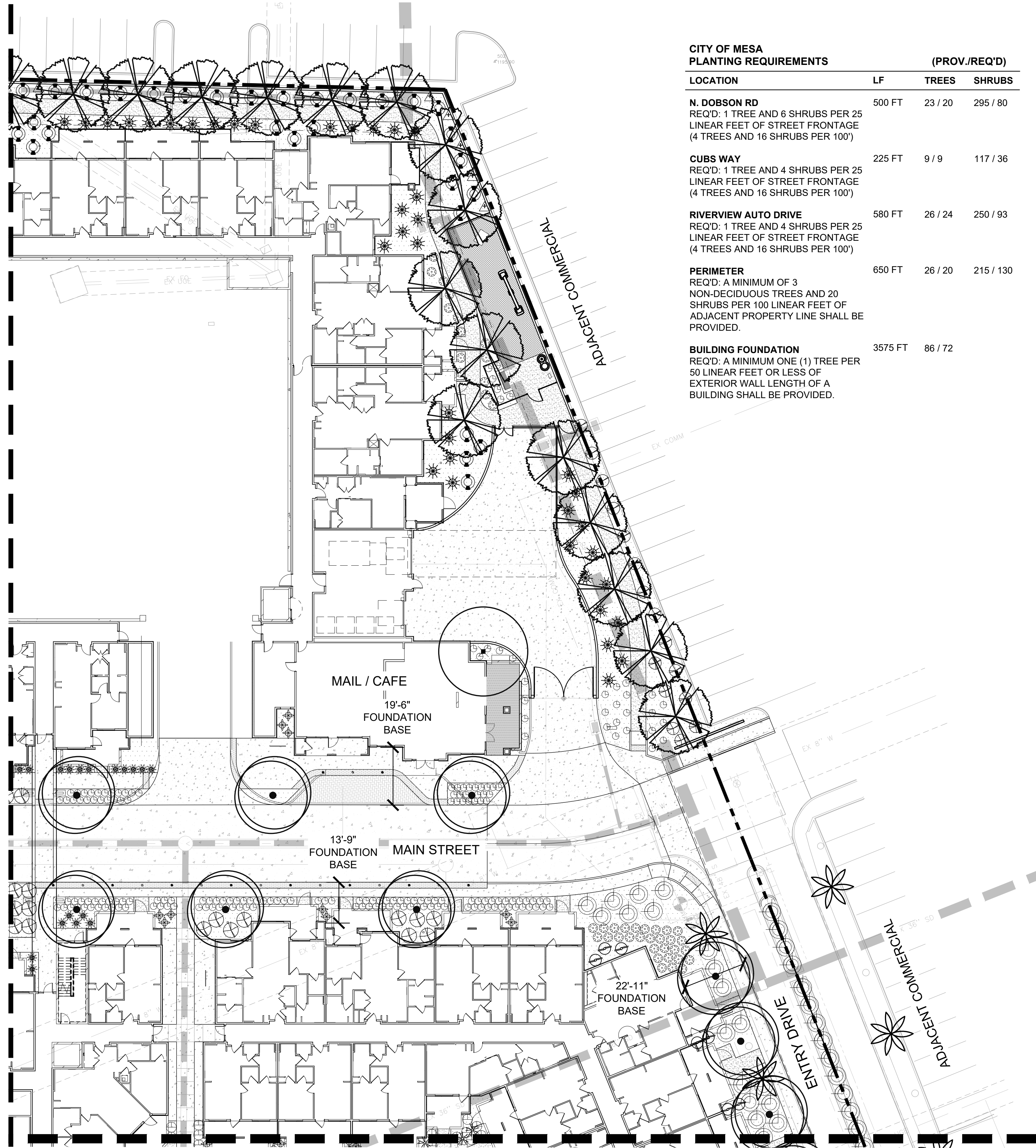
PARTIAL
LANDSCAPE PLAN

L101

Not For Construction



MATCHLINE - SEE SHEET L-101



MATCHLINE - SEE SHEET L-103

LOCATION	LF	(PROV./REQ'D)	
		TREES	SHRUBS
N. DOBSON RD REQ'D: 1 TREE AND 6 SHRUBS PER 25 LINEAR FEET OF STREET FRONTAGE (4 TREES AND 16 SHRUBS PER 100')	500 FT	23 / 20	295 / 80
CUBS WAY REQ'D: 1 TREE AND 4 SHRUBS PER 25 LINEAR FEET OF STREET FRONTAGE (4 TREES AND 16 SHRUBS PER 100')	225 FT	9 / 9	117 / 36
RIVERVIEW AUTO DRIVE REQ'D: 1 TREE AND 4 SHRUBS PER 25 LINEAR FEET OF STREET FRONTAGE (4 TREES AND 16 SHRUBS PER 100')	580 FT	26 / 24	250 / 93
PERIMETER REQ'D: A MINIMUM OF 3 NON-DECIDUOUS TREES AND 20 SHRUBS PER 100 LINEAR FEET OF ADJACENT PROPERTY LINE SHALL BE PROVIDED.	650 FT	26 / 20	215 / 130
BUILDING FOUNDATION REQ'D: A MINIMUM ONE (1) TREE PER 50 LINEAR FEET OR LESS OF EXTERIOR WALL LENGTH OF A BUILDING SHALL BE PROVIDED.	3575 FT	86 / 72	

PLANT LEGEND

SYM.	BOTANICAL NAME COMMON NAME	SIZE	MIN. CAL HT X W
TREES			
	EXISTING TREE		
	EXISTING PALM		
	CHAMAEROPS HUMILIS MEDITERRANEAN FAN PALM	24" BOX AS NOTED	
	CAESALPINIA CACALACO SMOOTHIE THORNLESS CASCALOTE	24" BOX MULTI TBD	1.5" CAL. 7'H X 4'W
	CITRUS SPP. CITRUS		TBD
	FIGUS NITIDA INDIAN LAUREL	60" BOX	4.0" CAL. 12'H X 6'W
	FRAXINUS VELUTINA 'FAN TEX' FAN TEX ASH	36" BOX	2.5" CAL. 14'H X 8'W
	MAGNOLIA GRANDIFLORA SOUTHERN MAGNOLIA	48" BOX	4.0" CAL. 12'H X 6'W
	PHOENIX DACTYLIFERA DATE PALM	18" TRUNK HT	
	PISTACIA X 'RED PUSH' RED PUSH PISTACHE	36" BOX	2.25" CAL. 11'H X 5'W
	QUERCUS VIRGINIANA HERITAGE LIVE OAK	TBD	TBD
	ULMUS PARVIFOLIA CHINESE ELM	36" BOX	2.5" CAL. 12'H X 8'W
SHRUBS			
	BOUGAINVILLEA 'LA JOLLA' LA JOLLA BOUGAINVILLEA	5 GAL	
	CARISSA MACROCARPA NATAL PLUM	5 GAL	
	LEUCOPHYLLUM LANGMANIAE 'RIO BRAVO' TEXAS RANGER	5 GAL	
	MUHLENBERGIA CAPILLARIS 'REGAL MIST' REGAL MIST MUHLY	5 GAL	
	MUHLENBERGIA DUBIA PINE MUHLY	5 GAL	
	RUELLIA PENINSULARIS BAJA RUELLIA	5 GAL	
	PHYLLOSTACHYS AUREA GOLDEN BAMBOO	15 GAL 30" DEEP ROOT BARRIER	
ACCENTS			
	AGAVE GEMINIFLORA TWIN-FLOWERED AGAVE	5 GAL	
	AGAVE WEBERI WEBER'S AGAVE	5 GAL	
	ALOE BARBADENSIS MEDICAL ALOE VERA 'ORANGE'	5 GAL	
	ALOE BARBADENSIS MEDICAL ALOE VERA 'YELLOW'	5 GAL	
	ALOE 'BLUE ELF' BLUE ELF ALOE	1 GAL	
	CEREUS HILDMANNIANUS HEDGE CACTUS	15 GAL	
	CYCAS REVOLUTA SAGO PALM	15 GAL	
	DASYLIRION WHEELERI DESERT SPOON	5 GAL	
	DIETES BICOLOR EVERGREEN IRIS	5 GAL	
	ECHINOCACTUS GRUSONII GOLDEN BARREL CACTUS	12" DIA.	
	EUPHORBIA TIRUCALLI FIRE STICK	15 GAL	
	HESPERALOE PARVIFLORA 'DESERT DUSK' DESERT DUSK HESPERALOE	5 GAL	
	HESPERALOE FUNIFERA GIANT HESPERALOE	5 GAL	
	PHOENIX ROBELINII PYGMY DATE PALM	24" BOX	
	PACHYCEREUS MARGINATUS MEXICAN FENCE POST	15 GAL (3) ARMS MIN.	
	YUCCA ROSTRATA BEAKED YUCCA	24" BOX TRIMMED TRUNKS	
	YUCCA RUPICOLA TWISTED LEAF YUCCA	5 GAL	
VINES			
	FIGUS PUMILA CREEPING FIG VINE	15 GAL	
GROUNDCOVER			
	LANTANA X 'NEW GOLD' NEW GOLD LANTANA	5 GAL	
	EREMOPHILA GLABRA 'MINGENEW GOLD' OUTBACK SUNRISE EMU	5 GAL	
	PORTULACARIA AFRA ELEPHANT FOOT	5 GAL	
	PEDILANTHUS BRACTEATUS TALL SLIPPER PLANT	15 GAL	
	RUELLIA BRITTONIANA 'KATIE' BLUE DWARF RUELLIA	5 GAL	
	SPHAGNETICOLA TRILOBATA YELLOW DOT	5 GAL	
	TRACHELOSPERMUM JASMINOIDES STAR JASMINE	5 GAL	
TOPDRESS			
	1" SCREENED DECOMPOSED GRANITE, 2" DEPTH MIN. COLOR: SANTA FE BROWN; WWW.PIONEERSAND.COM ALL PLANTING AREAS UNLESS OTHERWISE NOTED		
	2'-3" UNPOLISHED BEACH PEBBLE; COLOR: BLACK; WWW.PIONEERSAND.COM PALM PLANTING AREAS AT POOL		
	1'-2" UNPOLISHED BEACH PEBBLE; COLOR: BLACK; WWW.PIONEERSAND.COM PALM PLANTING AREAS AT POOL		

NOTE: ALL TREES NEXT TO UNDERGROUND UTILITIES WILL HAVE APPROVED ROOT BARRIERS.

NO.
**RESIDENCES
AT
DOBSON**
Mesa, AZ

Okland Construction Co.
1700 N McClintock Dr, Tempe, AZ
85281
4809903330

SCHEMATIC NOT
FOR CONSTRUCTION
OR RECORDING

TODD + ASSOCIATES
CRITICAL THINKING / CREATIVE DESIGN

ARCHITECTURE. PLANNING.
LANDSCAPE ARCHITECTURE.
4019 N. 44TH ST. / PHOENIX, AZ 85018
602-952-8280 / TODDASSOC.COM
Copyright 2023 Todd & Associates, Inc.

FLOOR associates
1425 N. First Street / 602.462.1425
Second Floor / 602.462.1427
Phoenix, AZ 85004

100% DD Set
Construction Documents

Proj Mgr.: KF
Drawn By: WY, IK
Rev. Date: Description:
04.27.2023 100% DD Set

PARTIAL
LANDSCAPE
PLAN
L-102
Sheet 34 of 43

PLANT LEGEND

SYM.	BOTANICAL NAME COMMON NAME	SIZE	MIN. CAL HT X W
TREES			
(+)	EXISTING TREE		
(*)	EXISTING PALM		
(x)	CHAMAEROPS HUMILIS MEDITERRANEAN FAN PALM	24" BOX AS NOTED	
(o)	CAESALPINIA CACALACO SMOOTHIE THORNLESS CASCALOTE	24" BOX MULTI	1.5" CAL. 7'H X 4'W
(o)	CITRUS SPP. CITRUS	TBD	TBD
(o)	FICUS NITIDA INDIAN LAUREL	60" BOX	4.0" CAL. 12'H X 6'W
(o)	FRAXINUS VELUTINA 'FAN TEX' FAN TEX ASH	36" BOX	2.5" CAL. 14'H X 8'W
(o)	MAGNOLIA GRANDIFLORA SOUTHERN MAGNOLIA	48" BOX	4.0" CAL. 12'H X 6'W
(o)	PHOENIX DACTYLIFERA DATE PALM	18" TRUNK HT	
(o)	PISTACIA X 'RED PUSH' RED PUSH PISTACHE	36" BOX	2.25" CAL. 11'H X 5'W
(o)	QUERCUS VIRGINIANA HERITAGE LIVE OAK	TBD	TBD
(o)	ULMUS PARVIFOLIA CHINESE ELM	36" BOX	2.5" CAL. 12'H X 8'W

SHRUBS			
(x)	BOUGAINVILLEA 'LA JOLLA' LA JOLLA BOUGAINVILLEA	5 GAL	
(x)	CARISSA MACROCARPA NATAL PLUM	5 GAL	
(x)	LEUCOPHYLLUM LANGMANIAE 'RIO BRAVO' TEXAS RANGER	5 GAL	
(x)	MUHLENBERGIA CAPILLARIS 'REGAL MIST' REGAL MIST MUHLY	5 GAL	
(x)	MUHLENBERGIA DUBIA PINE MUHLY	5 GAL	
(x)	RUELLIA PENINSULARIS BAJA RUELLIA	5 GAL	
(x)	PHYLLOSTACHYS AUREA GOLDEN BAMBOO	15 GAL 30" DEEP ROOT BARRIER	

ACCENTS			
(x)	AGAVE GEMINIFLORA TWIN-FLOWERED AGAVE	5 GAL	
(x)	AGAVE WEBERI WEBER'S AGAVE	5 GAL	
(x)	ALOE BARBADENSIS MEDICAL ALOE VERA 'ORANGE'	5 GAL	
(x)	ALOE BARBADENSIS MEDICAL ALOE VERA 'YELLOW'	5 GAL	
(x)	ALOE 'BLUE ELF' BLUE ELF ALOE	1 GAL	
(x)	CEREUS HILDMANNIANUS HEDGE CACTUS	15 GAL	
(x)	CYCAS REVOLUTA SAGO PALM	15 GAL	
(x)	DASYLIRION WHEELERI DESERT SPOON	5 GAL	
(x)	DIETES BICOLOR EVERGREEN IRIS	5 GAL	
(x)	ECHINOCACTUS GRUSONII GOLDEN BARREL CACTUS	12" DIA.	
(x)	EUPHORBIA TIRUCALLI FIRE STICK	15 GAL	
(x)	HESPERALOE PARVIFLORA 'DESERT DUSK' DESERT DUSK HEPERALOE	5 GAL	
(x)	HESPERALOE FUNIFERA GIANT HESPERALOE	5 GAL	
(x)	PHOENIX ROBELENI PYGMY DATE PALM	24" BOX	
(x)	PACHYCEREUS MARGINATUS MEXICAN FENCE POST	15 GAL (3) ARMS MIN.	
(x)	YUCCA ROSTRATA BEAKED YUCCA	24" BOX TRIMMED TRUNKS	
(x)	YUCCA RUPICOLA TWISTED LEAF YUCCA	5 GAL	

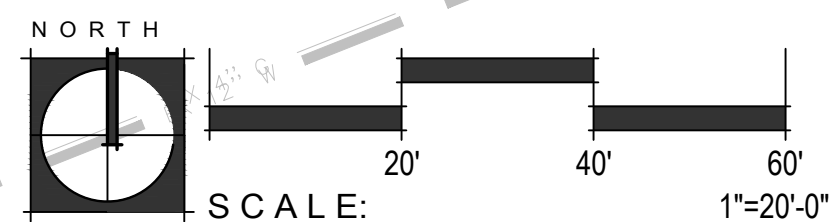
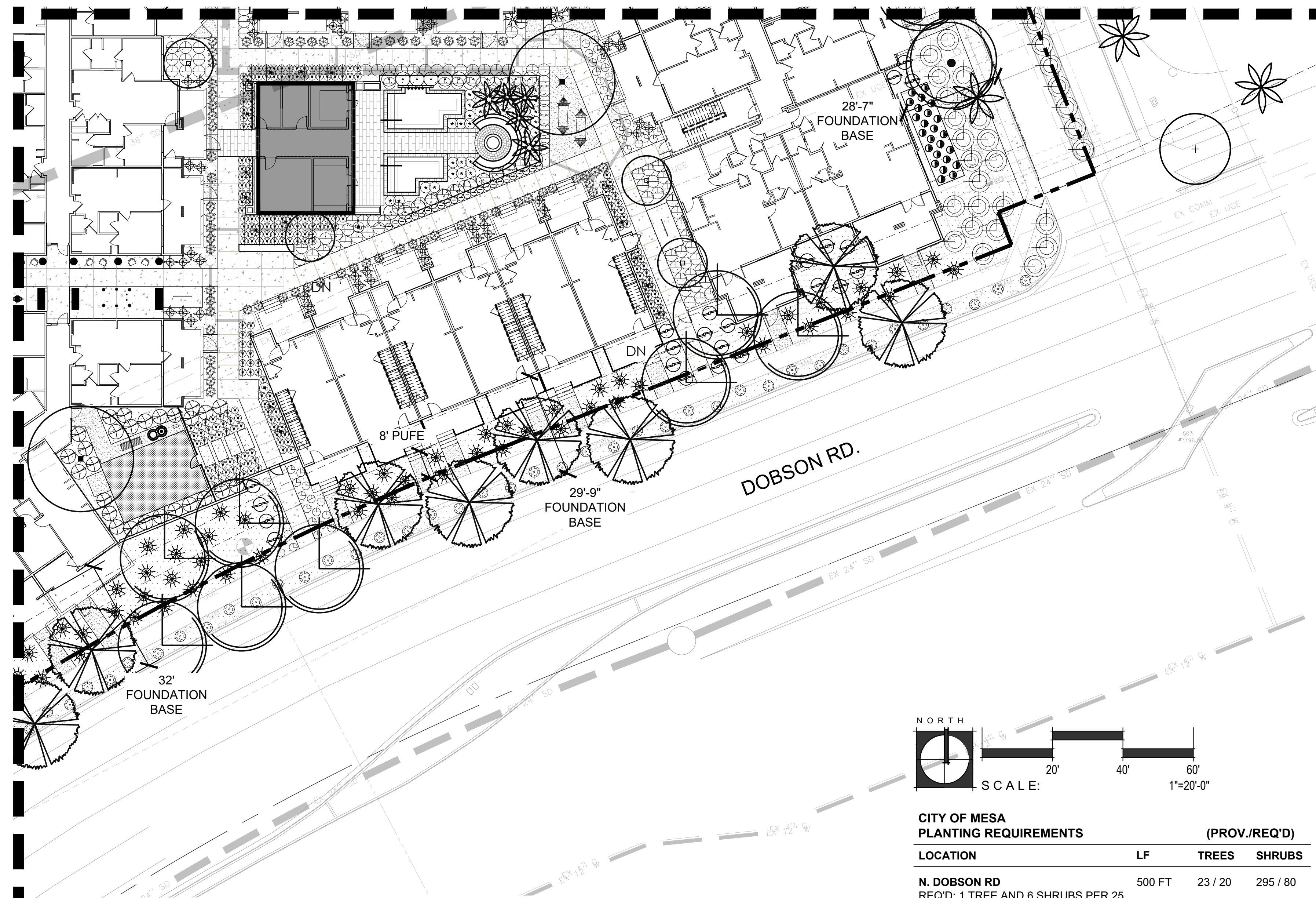
VINES			
(x)	FICUS PUMILA CREEPING FIG VINE	15 GAL	
GROUNDCOVER			
(x)	LANTANA X 'NEW GOLD' NEW GOLD LANTANA	5 GAL	
(x)	EREMOPHILA GLABRA 'MINGENEW GOLD' OUTBACK SUNRISE EMU	5 GAL	
(x)	PORTULACARIA AFRA ELEPHANT FOOT	5 GAL	
(x)	PEDILANTHUS BRACTEATUS TALL SLIPPER PLANT	15 GAL	
(x)	RUELLIA BRITONNIANA 'KATIE' BLUE DWARF RUELLIA	5 GAL	
(x)	SPHAGNETICOLA TRILOBATA YELLOW DOT	5 GAL	
(x)	TRACHELOSPERMUM JASMINOIDES STAR JASMINE	5 GAL	

TOPDRESS			
(x)	1" SCREENED DECOMPOSED GRANITE, 2" DEPTH MIN. COLOR: SANTA FE BROWN; WWW.PIONEERSAND.COM ALL PLANTING AREAS UNLESS OTHERWISE NOTED		
(x)	2'-3" UNPOLISHED BEACH PEBBLE; COLOR: BLACK; WWW.PIONEERSAND.COM PALM PLANTING AREAS AT POOL		
(x)	1'-2" UNPOLISHED BEACH PEBBLE; COLOR: BLACK; WWW.PIONEERSAND.COM PALM PLANTING AREAS AT POOL		

NOTE: ALL TREES NEXT TO UNDERGROUND UTILITIES WILL HAVE APPROVED ROOT BARRIERS.

MATCHLINE - SEE SHEET L-102

MATCHLINE - SEE SHEET L-103



CITY OF MESA PLANTING REQUIREMENTS (PROV./REQ'D)			
LOCATION	LF	TREES	SHRUBS
N. DOBSON RD REQ'D: 1 TREE AND 6 SHRUBS PER 25 LINEAR FEET OF STREET FRONTAGE (4 TREES AND 16 SHRUBS PER 100')	500 FT	23 / 20	295 / 80
CUBS WAY REQ'D: 1 TREE AND 4 SHRUBS PER 25 LINEAR FEET OF STREET FRONTAGE (4 TREES AND 16 SHRUBS PER 100')	225 FT	9 / 9	117 / 36
RIVERVIEW AUTO DRIVE REQ'D: 1 TREE AND 4 SHRUBS PER 25 LINEAR FEET OF STREET FRONTAGE (4 TREES AND 16 SHRUBS PER 100')	580 FT	26 / 24	250 / 93
PERIMETER REQ'D: A MINIMUM OF 3 NON-DECIDUOUS TREES AND 20 SHRUBS PER 100 LINEAR FEET OF ADJACENT PROPERTY LINE SHALL BE PROVIDED.	650 FT	26 / 20	215 / 130
BUILDING FOUNDATION REQ'D: A MINIMUM ONE (1) TREE PER 50 LINEAR FEET OR LESS OF EXTERIOR WALL LENGTH OF A BUILDING SHALL BE PROVIDED.	3575 FT	86 / 72	

NO.
**RESIDENCES
AT
DOBSON**
Mesa, AZ

Okland Construction Co.
1700 N McClintock Dr, Tempe, AZ 85281
4809903330

SCHEMATIC NOT FOR CONSTRUCTION OR RECORDING



ARCHITECTURE. PLANNING.
LANDSCAPE ARCHITECTURE.
4019 N. 44TH ST. / PHOENIX, AZ 85018
602-952-8280 / TODDASSOC.COM
Copyright 2023 Todd & Associates, Inc.



100% DD Set
Construction Documents

Proj Mgr.: KF
Drawn By: WY, IK
Rev. Date: Description:
04.27.2023 100% DD Set

PARTIAL
LANDSCAPE
PLAN
L-103
Sheet 35 of 43

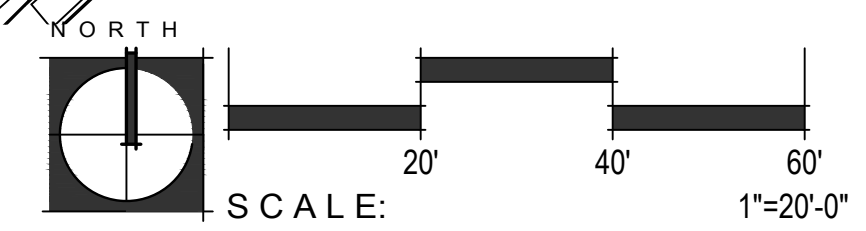
MATCHLINE - SEE SHEET L-101



MATCHLINE - SEE SHEET L-103

PLANT LEGEND

SYM.	BOTANICAL NAME COMMON NAME	SIZE	MIN. CAL HT X W	QTY.
TREES				
(Symbol)	EXISTING TREE			
(Symbol)	EXISTING PALM			
(Symbol)	CHAMAEROPS HUMILIS MEDITERRANEAN FAN PALM	24" BOX AS NOTED		5
(Symbol)	CAESALPINIA CACALACO SMOOTHIE THORNLESS CASCALOTE	24" BOX MULTI	1.5" CAL. 7'H X 4'W	6
(Symbol)	CITRUS SPP. CITRUS	TBD	TBD	11
(Symbol)	FIGUS NITIDA INDIAN LAUREL	60" BOX	4.0" CAL.	5
(Symbol)	FRAXINUS VELUTINA 'FAN TEX' FAN TEX ASH	36" BOX	12'H X 6'W 2.5" CAL.	26
(Symbol)	MAGNOLIA GRANDIFLORA SOUTHERN MAGNOLIA	48" BOX	14'H X 8'W 4.0" CAL.	1
(Symbol)	PHOENIX DACTYLIFERA DATE PALM	18" TRUNK HT	12'H X 6'W	21
(Symbol)	PISTACIA X 'RED PUSH' RED PUSH PISTACHE	36" BOX	2.25" CAL. 11'H X 5'W	26
(Symbol)	QUERCUS VIRGINIANA HERITAGE LIVE OAK	TBD	TBD	6
(Symbol)	ULMUS PARVIFOLIA CHINESE ELM	36" BOX	2.5" CAL. 12'H X 8'W	54
SHRUBS				
(Symbol)	BOUGAINVILLEA 'LA JOLLA' LA JOLLA BOUGAINVILLEA	5 GAL		62
(Symbol)	CARISSA MACROCARPA NATAL PLUM	5 GAL		56
(Symbol)	LEUCOPHYLLUM LANGMANIAE 'RIO BRAVO' TEXAS RANGER	5 GAL		72
(Symbol)	MUHLENBERGIA CAPILLARIS 'REGAL MIST' REGAL MIST MUHLY	5 GAL		153
(Symbol)	MUHLENBERGIA DUBIA PINE MUHLY	5 GAL		274
(Symbol)	RUPELLIA PENINSULARIS BAJA RUELLIA	5 GAL		50
(Symbol)	RUPELLIA SIMPLEX MEXICAN PETUNIA	1 GAL		156
(Symbol)	PHYLLOSTACHYS AUREA GOLDEN BAMBOO	15 GAL 30" DEEP ROOT BARRIER		25
ACCENTS				
(Symbol)	AGAVE GEMINIFLORA TWIN-FLOWERED AGAVE	5 GAL		14
(Symbol)	AGAVE WEBERI WEBER'S AGAVE	5 GAL		5
(Symbol)	ALOE BARBADENSIS MEDICAL ALOE VERA 'ORANGE'	5 GAL		62
(Symbol)	ALOE BARBADENSIS MEDICAL ALOE VERA 'YELLOW'	5 GAL		295
(Symbol)	ALOE 'BLUE ELF' BLUE ELF ALOE	1 GAL		154
(Symbol)	CEREUS HILDMANNIANUS HEDGE CACTUS	15 GAL		24
(Symbol)	CYCAS REVOLUTA SAGO PALM	15 GAL		11
(Symbol)	DASYLIRION WHEELERI DESERT SPOON	5 GAL		167
(Symbol)	DIETES BICOLOR EVERGREEN IRIS	5 GAL		161
(Symbol)	ECHINOCACTUS GRUSONII GOLDEN BARREL CACTUS	12" DIA.		15
(Symbol)	HESPERALOE PARVIFLORA 'DESERT DUSK' DESERT DUSK HESPERALOE	5 GAL		148
(Symbol)	HESPERALOE FUNIFERA GIANT HESPERALOE	5 GAL		14
(Symbol)	PHOENIX ROBELNII PYGMY DATE PALM	24" BOX		3
(Symbol)	PACHYCREUS MARGINATUS MEXICAN FENCE POST	15 GAL (3) ARMS MIN.		8
(Symbol)	YUCCA ROSTRATA BEAKED YUCCA	24" BOX TRIMMED TRUNKS		5
(Symbol)	YUCCA RUPICOLA TWISTED LEAF YUCCA	5 GAL		49
VINES				
(Symbol)	FIGUS PUMILA CREEPING FIG VINE	15 GAL		42
GROUNDCOVER				
(Symbol)	LANTANA X 'NEW GOLD' NEW GOLD LANTANA	5 GAL		517
(Symbol)	EREMOPHILA GLABRA 'MINGENEW GOLD' OUTBACK SUNRISE EMU	5 GAL		80
(Symbol)	PEDILANTHUS BRACTEATUS TALL SLIPPER PLANT	15 GAL		113
(Symbol)	RUPELLIA BRITONNIANA 'KATIE' BLUE DWARF RUELLIA	5 GAL		24
(Symbol)	SPHAGNETICOLA TRILOBATA YELLOW DOT	5 GAL		377
(Symbol)	TRACHELOSPERMUM JASMINOIDES STAR JASMINE	5 GAL		28



NOTE: ALL TREES NEXT TO UNDERGROUND UTILITIES WILL HAVE APPROVED ROOT BARRIERS.



RESIDENCES AT DOBSON ROAD AND CUBS WAY

MESA, ARIZONA
GPA/REZONING/SITE PLAN SUBMITTAL

APRIL 19, 2023

PARTIAL
LANDSCAPE PLAN

L104

Not For Construction

