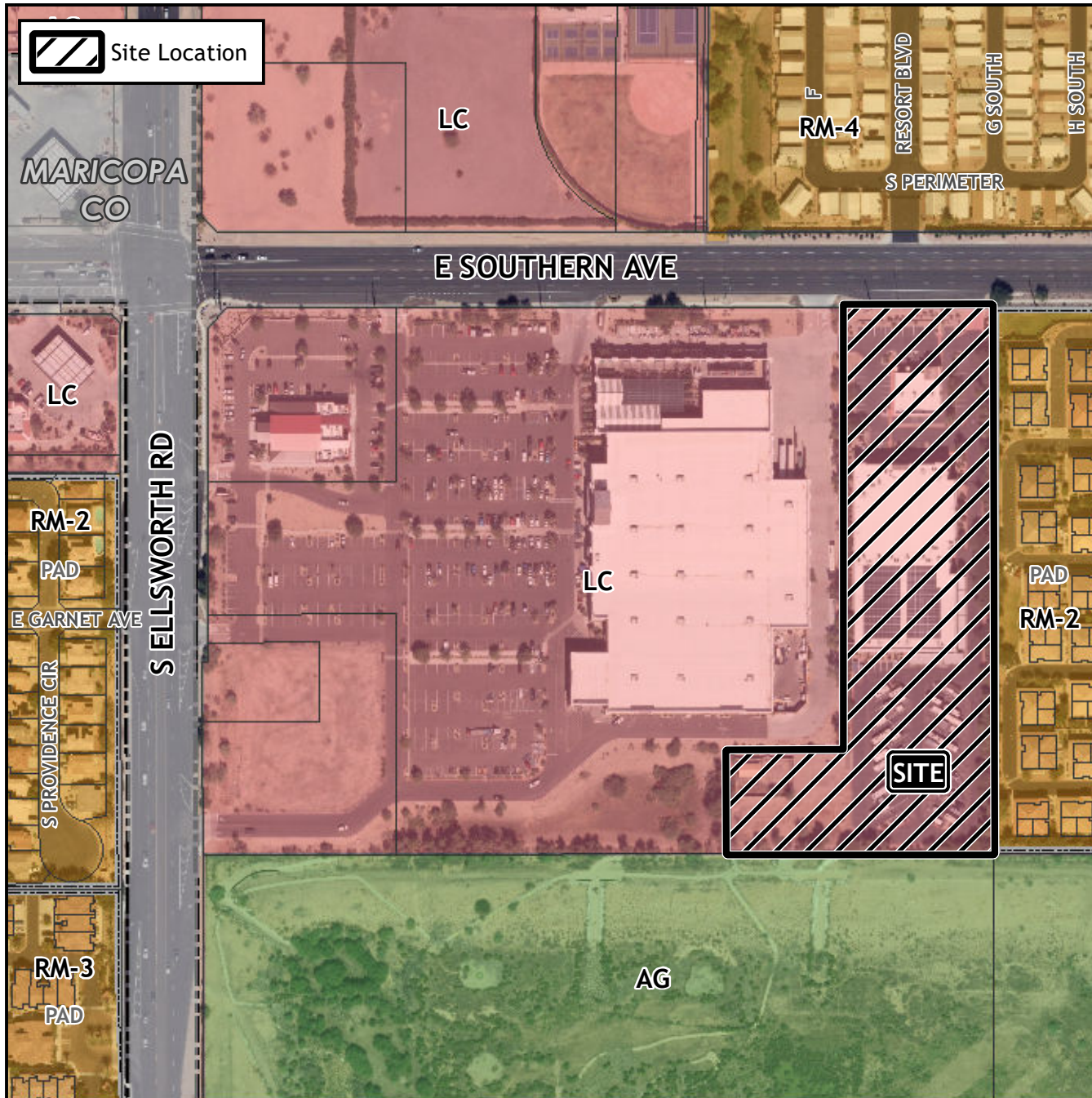


Board of Adjustment Vicinity Map: BOA23-00660

Case Details



Case:

BOA23-00660

Site / Address:

(District 5). Within the 9300 block of East Southern Avenue (south side). Located east of Ellsworth Road on the south side of Southern Avenue (5.4± acres).

Request:

Requesting a Substantial Conformance Improvement Permit (SCIP) to allow deviations from certain development standards for a storage facility in the Limited Commercial (LC) zoning district.

