



Design Review Board



DRB24-00990

Taco Bell at Avalon Ranch



Request

- Design Review
- To all for a limited-service restaurant with drive-thru facilities



45315 | **Front Entry Corner**
Taco Bell
S. Power Rd., Mesa, AZ 85212

 Charles William Pope
& Associates
224 Gardenview
San Antonio, Texas 78213
Tel: (210) 349-6005 Fax: (210) 349-6025
e-mail: charles@cpope.com

Jan. 16, 2025

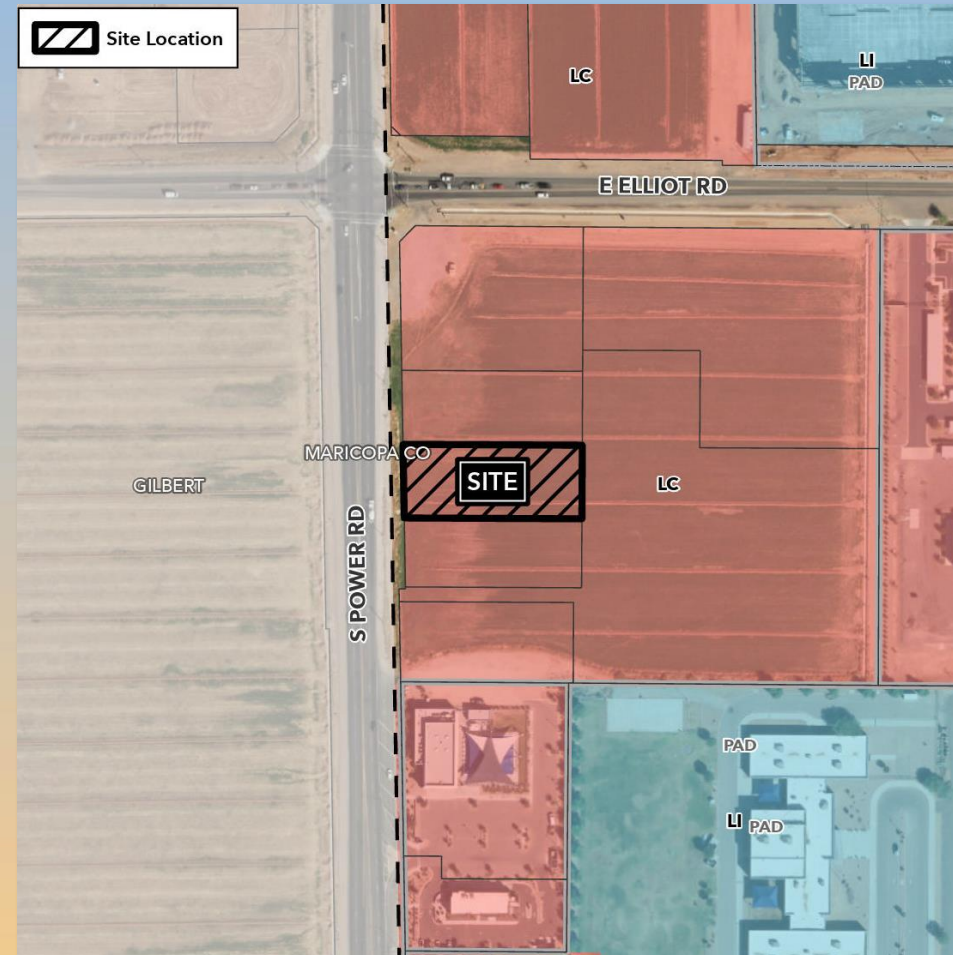
Version "B"

1



Location

- South of Elliot Road
- East side of Power Road





Site Photo

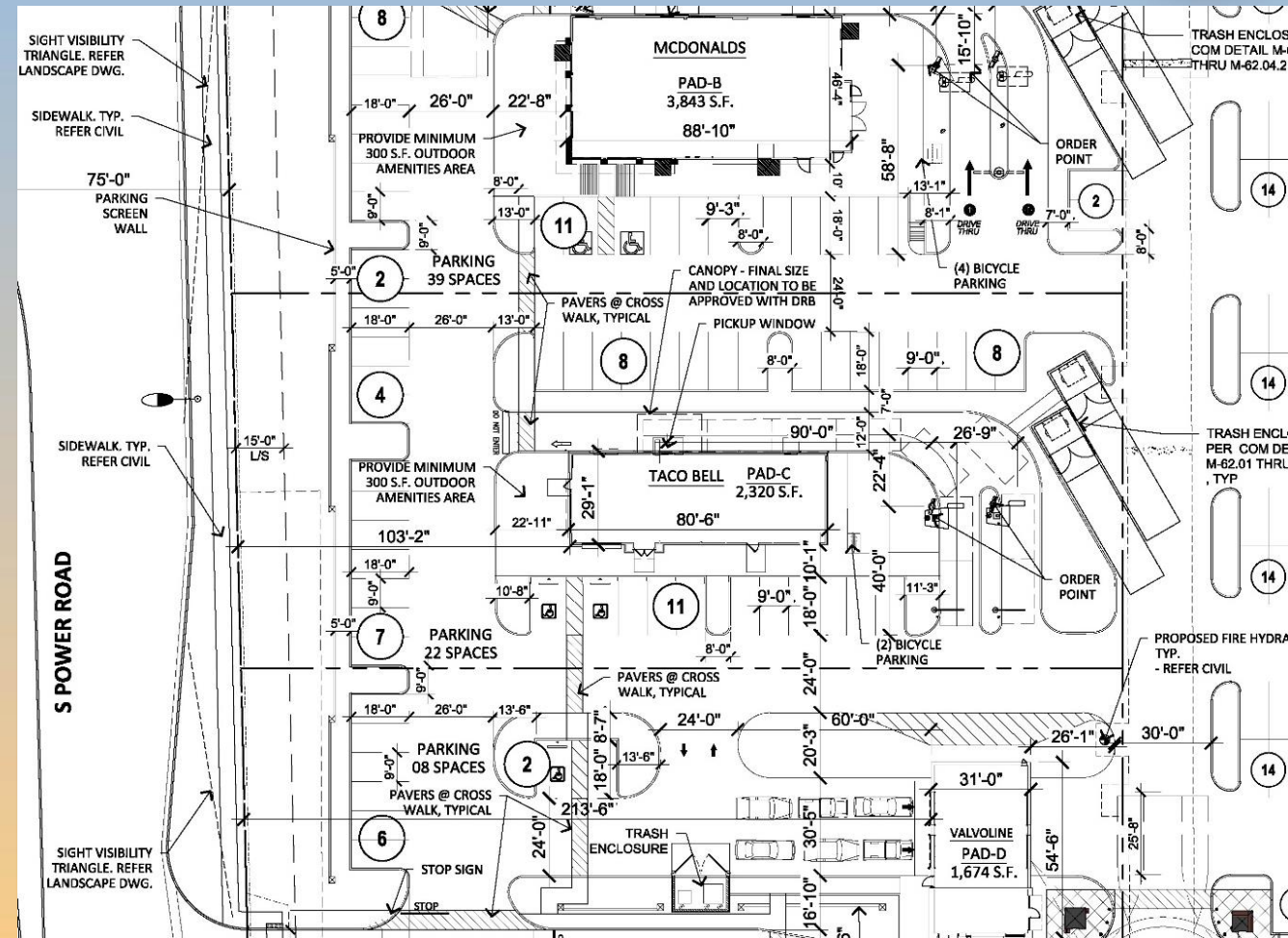


Looking east from Power Road



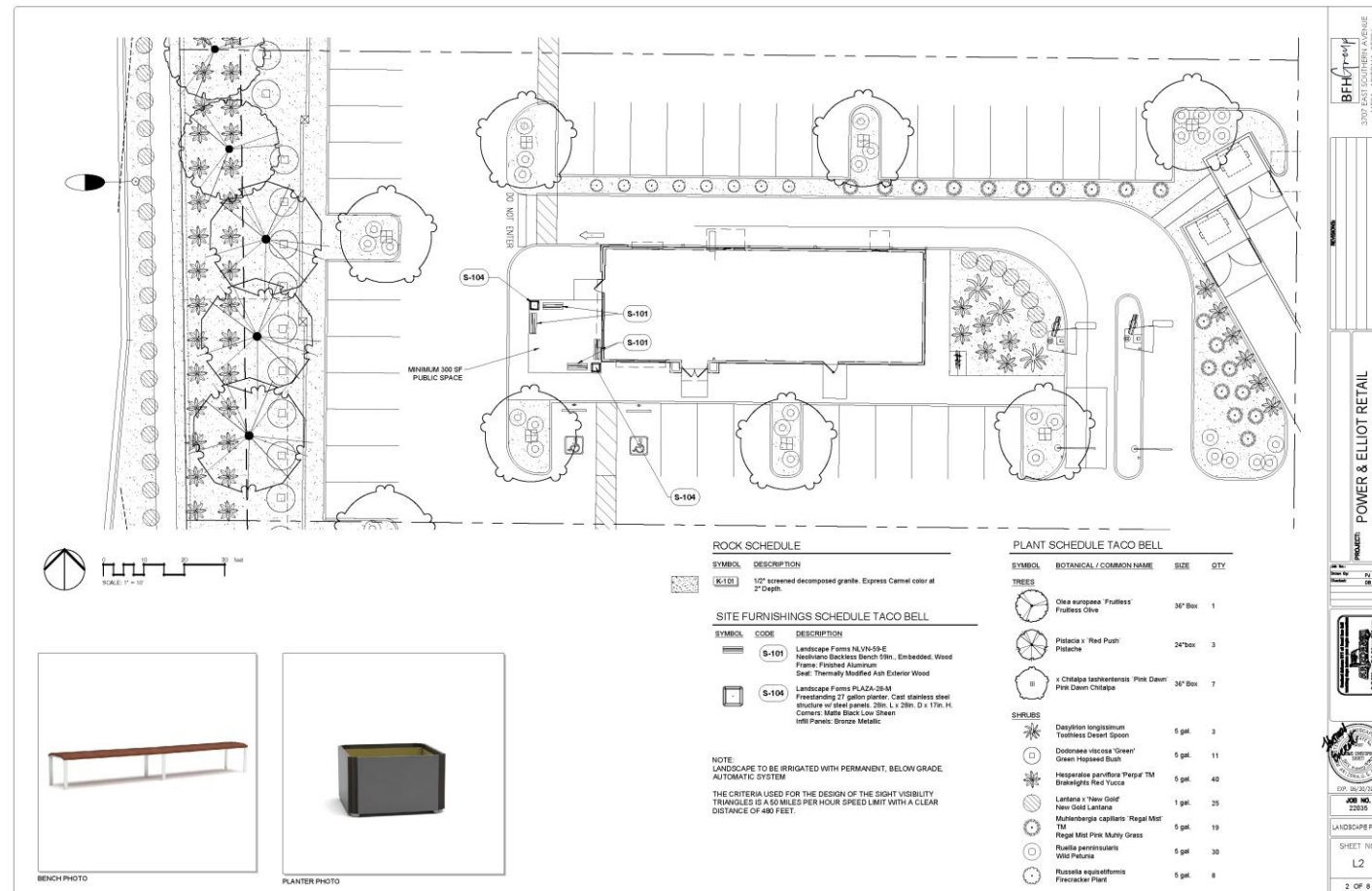
Site Plan

- 2,320 sq. ft. building with drive-thru
- 300 sq. ft. amenity area
- 38 parking spaces



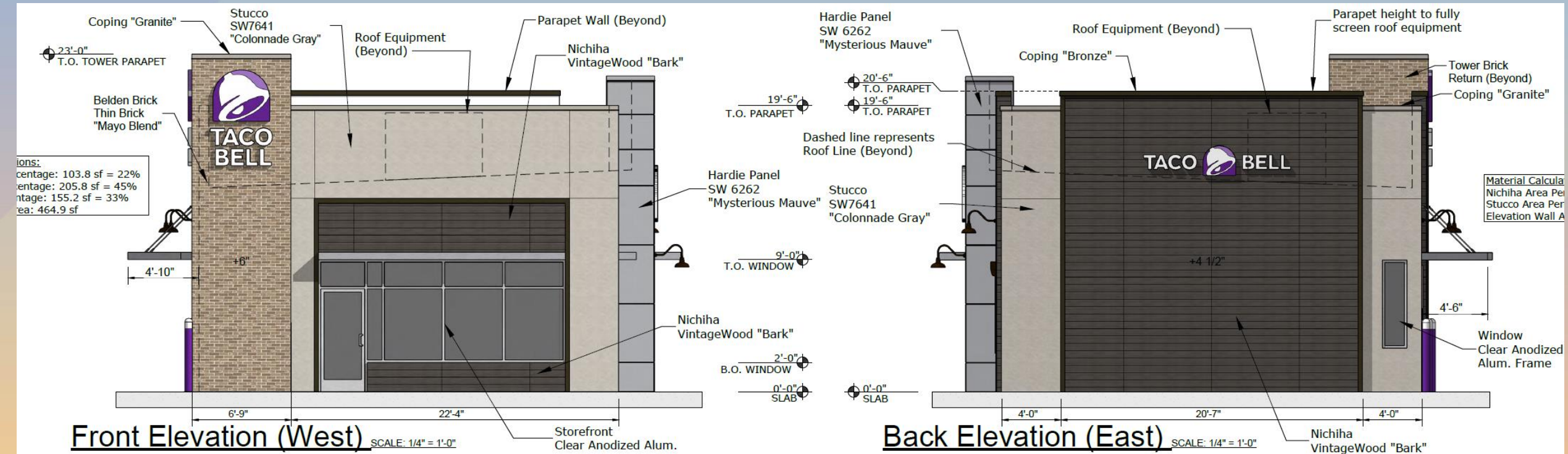


Landscape Plan



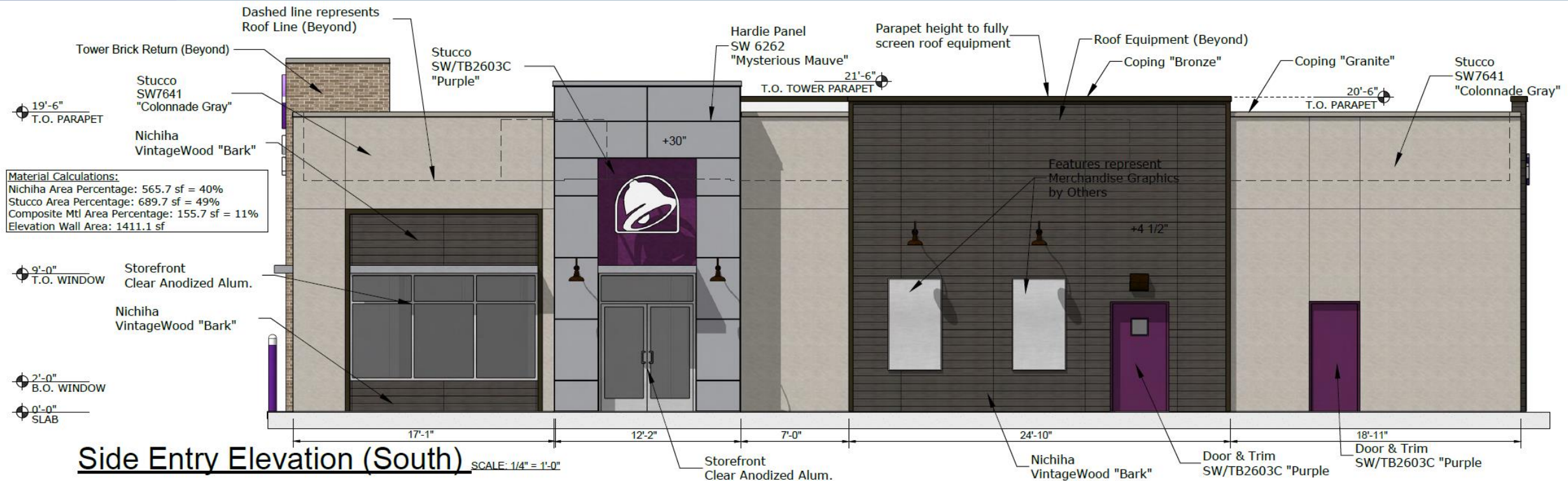


Elevations



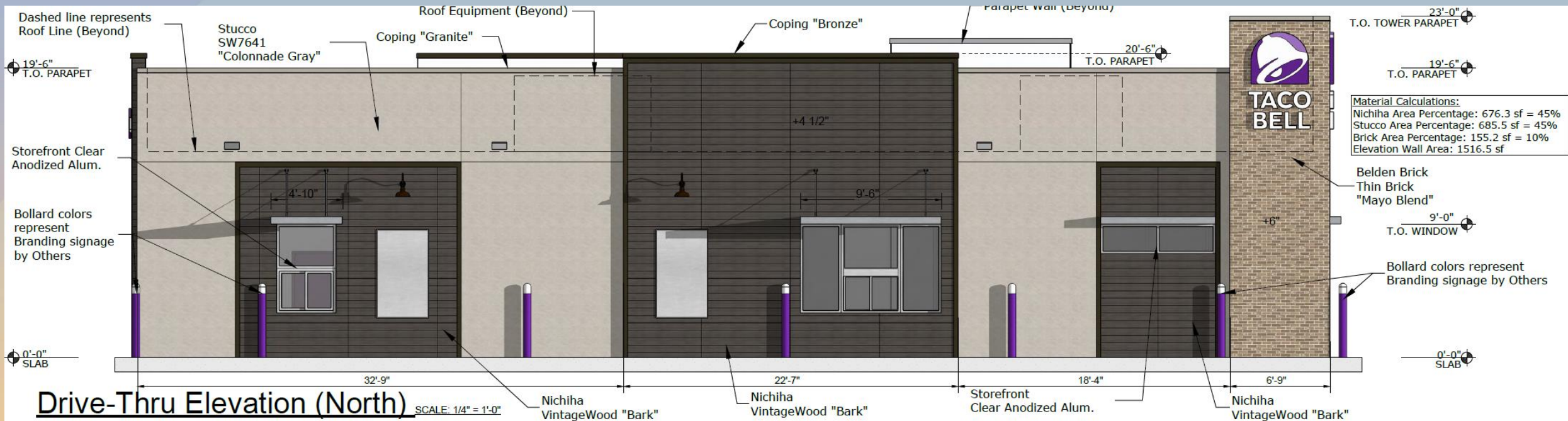


Elevations



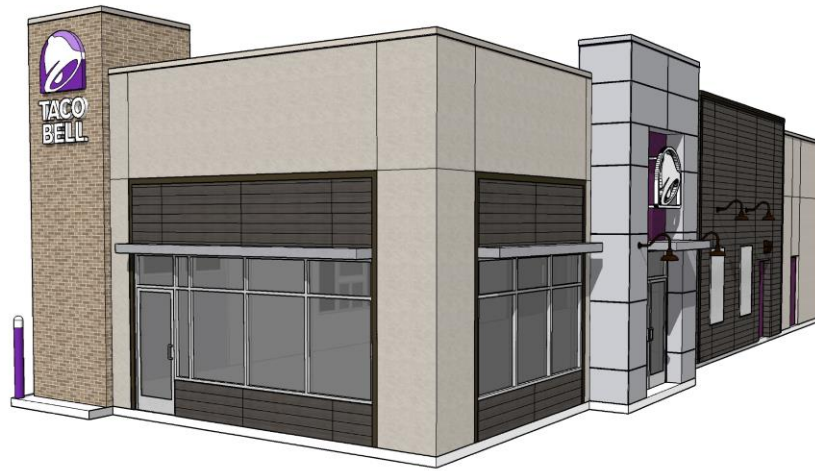


Elevations





Renderings



Front Entry Corner

45315
Taco Bell
S. Power Rd., Mesa, AZ 85212

 Charles William Pope
& Associates
224 Gardenvue
San Antonio, Texas 78213
Tel: (210) 349-6005 Fax: (210) 349-6025
e-mail: charles@cpope.com

Jan. 16, 2025

Version "B"

1



Back Side Entry Corner

45315
Taco Bell
S. Power Rd., Mesa, AZ 85212

 Charles William Pope
& Associates
224 Gardenvue
San Antonio, Texas 78213
Tel: (210) 349-6005 Fax: (210) 349-6025
e-mail: charles@cpope.com

Jan. 16, 2025

Version "B"

2



Renderings



Back Drive Thru Corner

45315
Taco Bell
S. Power Rd., Mesa, AZ 85212


Charles William Pope
& Associates
224 Gardenvue
San Antonio, Texas 78213
Tel: (210) 349-6005 Fax: (210) 349-6025
e-mail: charles@cpope.com

Jan. 16, 2025

Version "B"

3



Front Drive Thru Corner

45315
Taco Bell
S. Power Rd., Mesa, AZ 85212


Charles William Pope
& Associates
224 Gardenvue
San Antonio, Texas 78213
Tel: (210) 349-6005 Fax: (210) 349-6025
e-mail: charles@cpope.com

Jan. 16, 2025

Version "B"

4



Color and Material Board

Material and Color Legend



Belden Brick
Thin Brick Veneer
"Mayo Blend"

Field Color:
Tower Walls



Sherwin Williams
Exterior Paint
SW7641 "Colonnade Gray"

Field Color:
Main Walls



James Hardie
Hardie Panel Vertical
Siding - Smooth
SW6262 "Mysterious
Mauve"

Field Color:
Entry Tower Walls



Nichiha
Fiber Cement Panels
VintageWood
"Bark"

Field Color:
Accent Walls



Sherwin Williams
Exterior Paint
SW/TB2603C "Purple"

Field Color:
Doors / Tower Accent Wall



Metal Coping Color
Similar to Pac-clad
"Granite"

Field Color:
Parapet Coping/Trim



Findings

Staff is seeking your review and recommendation on the following:

- ✓ Proposed building elevations and landscape plan

Staff welcomes any feedback



Design Review Board